

14401 S WESTERN AVE

GARDENA, CA 90249

*±18,844 SF Fenced Yard with
±2,820 SF Office/Warehouse
Immediately Available for Lease*

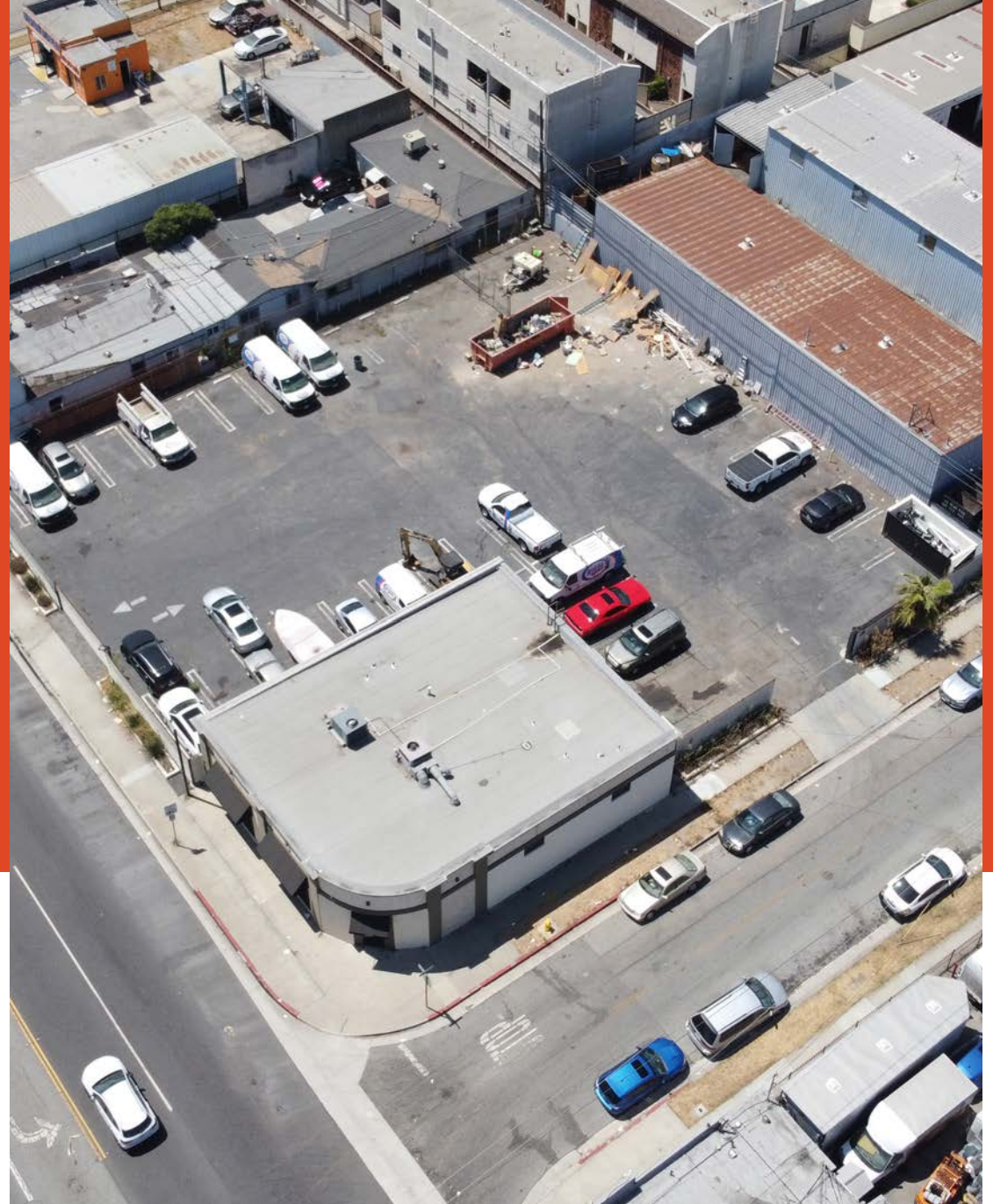
±2,820 SF office/warehouse

Ground level loading door

Centrally located to 105, 405, and 110 freeways

Fully fenced/paved yard

Private office spaces



Exclusively listed by

TOBIAS HIPP

949.557.5043 | tobias.hipp@kidder.com

LIC N° 02189702

JOSH CUNNINGHAM

949.557.5075 | josh.cunningham@kidder.com

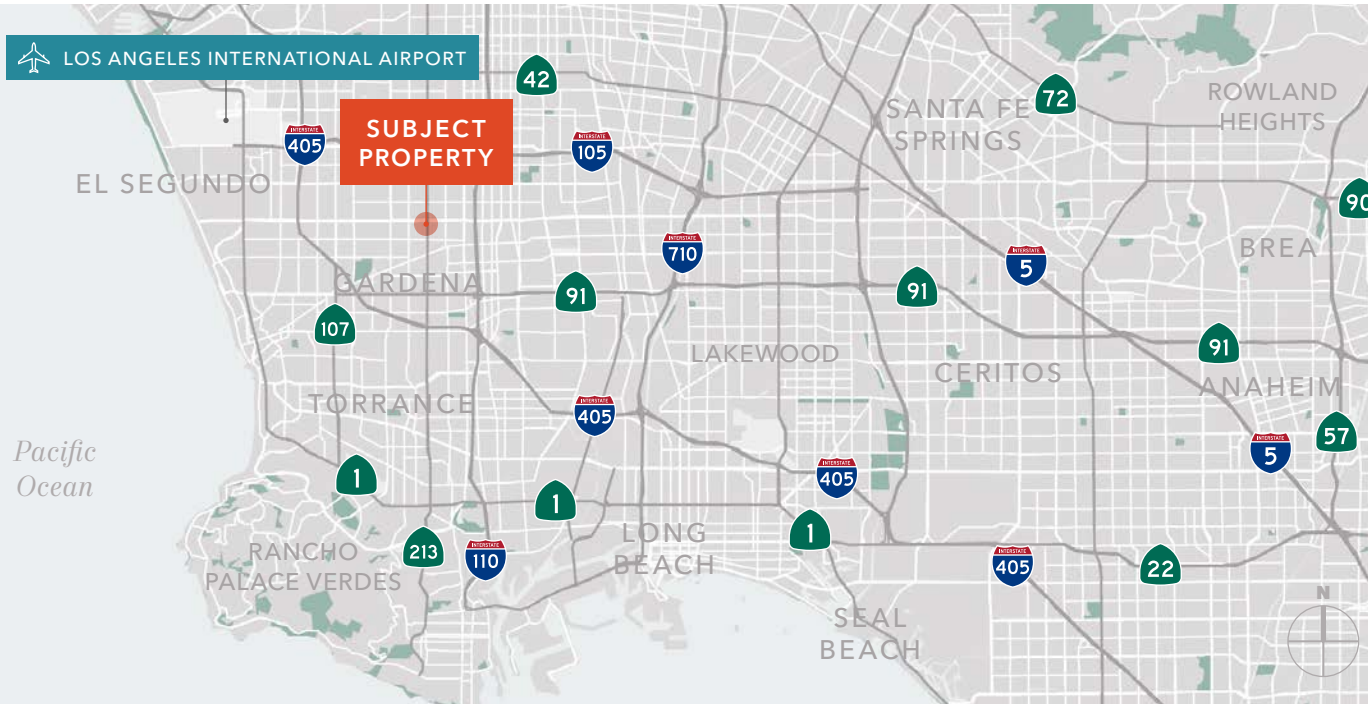
LIC N° 01802660

KIDDER.COM

This information supplied herein is from sources we deem reliable. It is provided without any representation, warranty, or guarantee, expressed or implied as to its accuracy. Prospective Buyer or Tenant should conduct an independent investigation and verification of all matters deemed to be material, including, but not limited to, statements of income and expenses. Consult your attorney, accountant, or other professional advisor.



FOR LEASE



PROPERTY HIGHLIGHTS

Industrial flex office/warehouse

Loading 1 ground level

Fenced/gated yard

Air conditioned

AVAILABLE

IMMEDIATELY

6 MIN

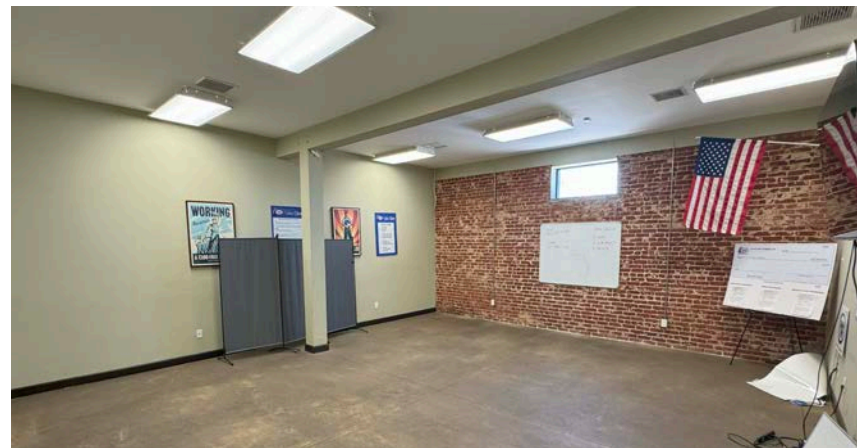
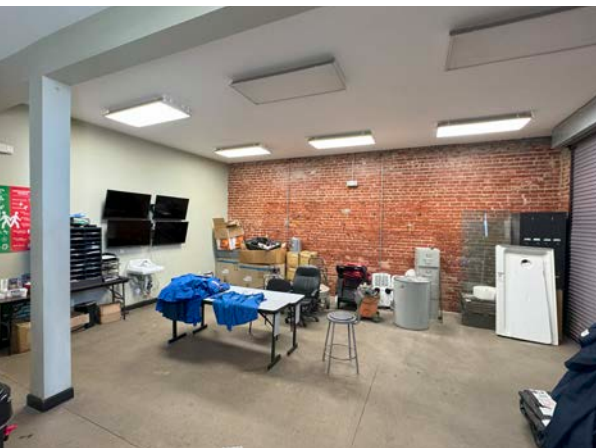
TO INTERSTATE 110

7 MIN

TO INTERSTATE 105

10 MIN

TO INTERSTATE 405

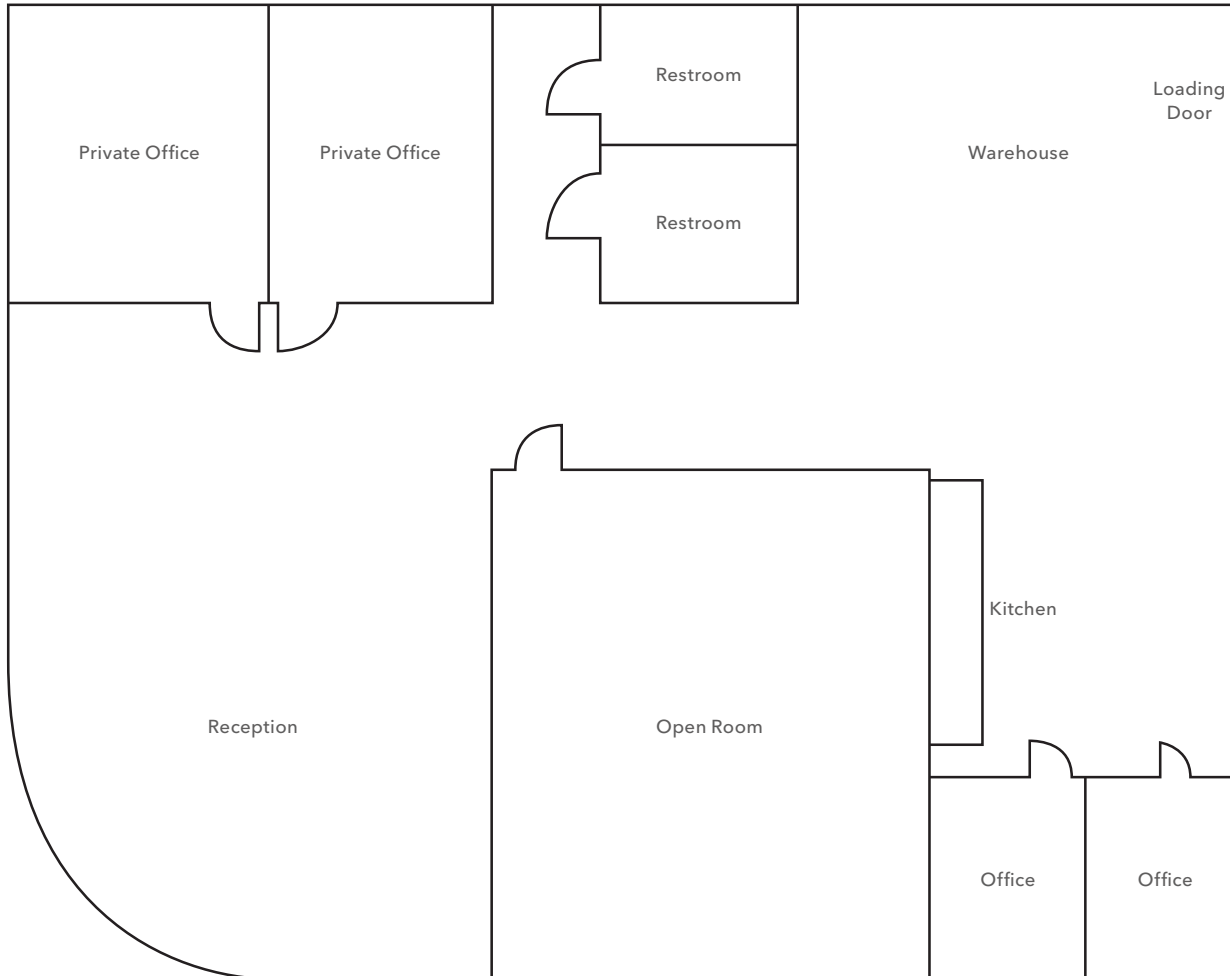


KIDDER.COM

This information supplied herein is from sources we deem reliable. It is provided without any representation, warranty, or guarantee, expressed or implied as to its accuracy. Prospective Buyer or Tenant should conduct an independent investigation and verification of all matters deemed to be material, including, but not limited to, statements of income and expenses. Consult your attorney, accountant, or other professional advisor.



FLOOR PLAN



SUITE DETAILS

TOTAL YARD SF ±18,844 SF (±0.43 AC)

OFFICE/
WAREHOUSE ±2,820 SF

LOADING 1 Ground Level

KIDDER.COM

This information supplied herein is from sources we deem reliable. It is provided without any representation, warranty, or guarantee, expressed or implied as to its accuracy. Prospective Buyer or Tenant should conduct an independent investigation and verification of all matters deemed to be material, including, but not limited to, statements of income and expenses. Consult your attorney, accountant, or other professional advisor.