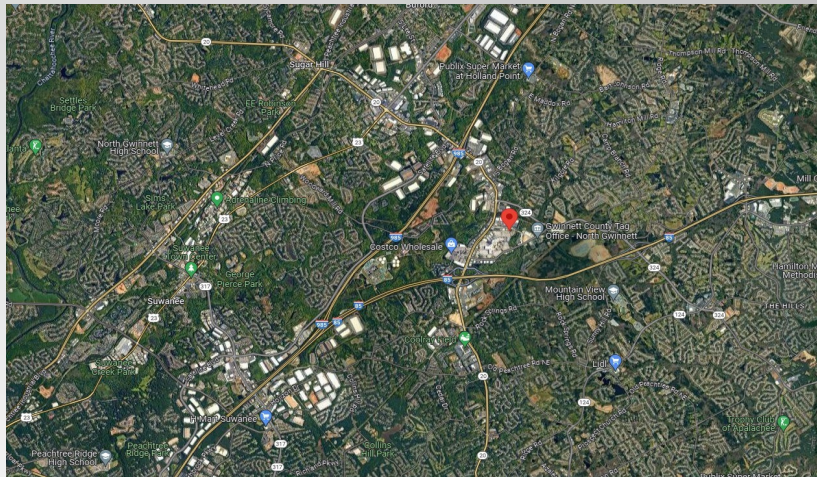


THE SHOPPES AT BUFORD

3200 WOODWARD CROSSING BLVD, BUFORD, GA

TREADSTONECRE.COM



AVAILABLE FOR LEASE

±3,797 SQUARE FEET

Retail Space Available

The Shoppes at Buford is a 20,844± SF retail center adjacent to the Mall of Georgia, which boasts over 2 million square feet of retail space and over 1 million visitors a month. The center is located just off of Buford Drive on Woodward Crossing Boulevard in close proximity to I-85 and I-985. The center has excellent visibility, great ingress and egress and is well positioned in an established retail corridor with major retailers such as Target, TJ Maxx and Best Buy.

Buford Drive ADT 47,700

For more information please contact:

Volesta Autry

Broker

770/239-1501 Office

770/789-8796 Cell

Email vauty@treadstonecre.com



5975 Shiloh Rd, Suite 114
Alpharetta, GA 30005

Office 770/ 239-1501

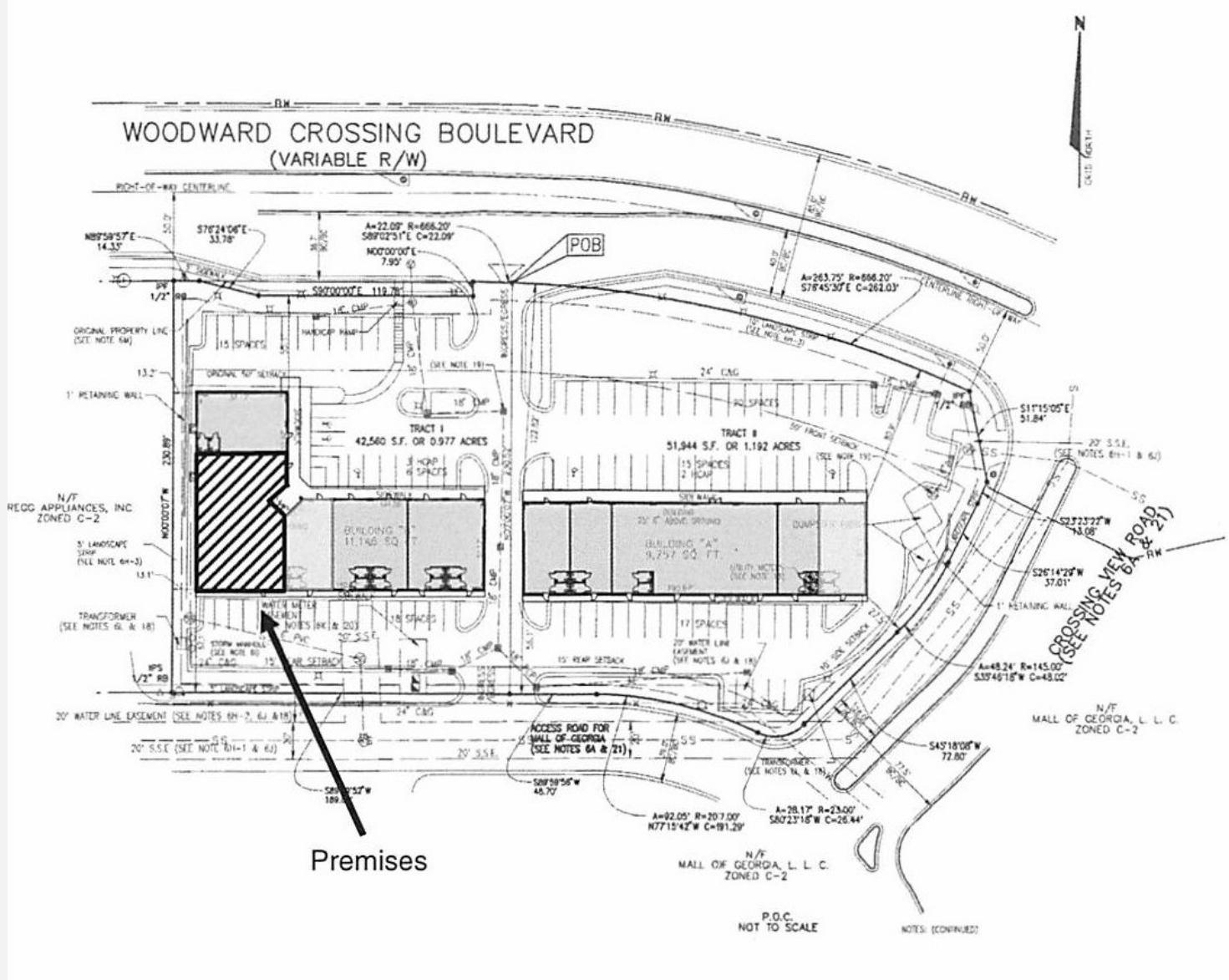
Cell 770-789-8796

Treadstonecre.com

THE SHOPPES AT BUFORD

3200 WOODWARD CROSSING BLVD, BUFORD, GA

TREADSTONECRE.COM



Available Spaces
Suite B106 - 3,797 sf – Retail Space

THE SHOPPES AT BUFORD

3200 WOODWARD CROSSING BLVD, BUFORD, GA

TREADSTONECRE.COM

Demos

Population:	1 Mile	3Miles	5 Miles
2023 Population	6,989	56,821	157,534
2028 Population Projection	7,352	59,686	164,241
Annual Growth 2023-2028	1.00%	1.00%	0.90%
Households:			
2023 Households	2,371	19,536	51,552
2028 Household Projection	2,495	20,537	53,816
Avg Household Income	\$109,568	\$106,669	\$112,460
Median Household Income	\$79,879	\$85,551	\$92,747