



## PROPERTY OVERVIEW

**Size:** 2,493 SF

**Rate:** \$27.15 PSF Full Service

**Expires:** May 31, 2027

**Type:** Medical/Office Sublease

## SPACE FEATURES

Multiple exam rooms with medical setup

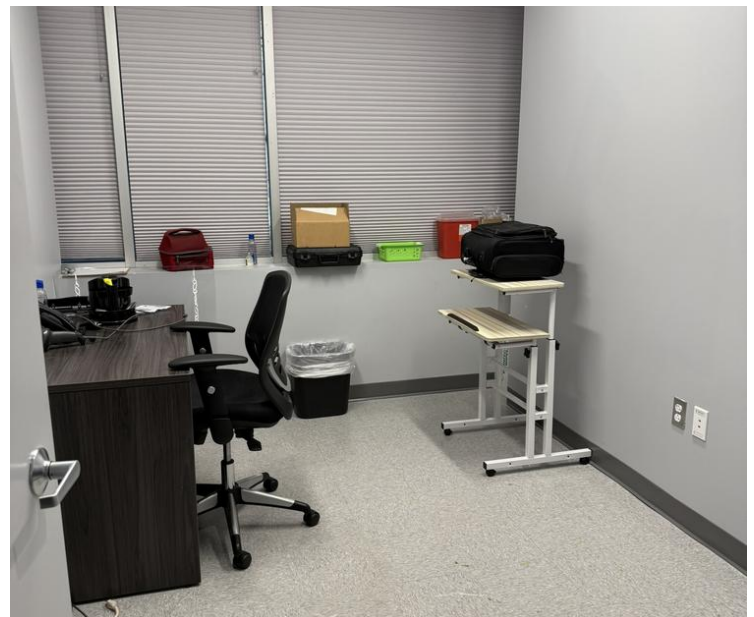
Private offices with natural light

Built-in cabinetry and counters

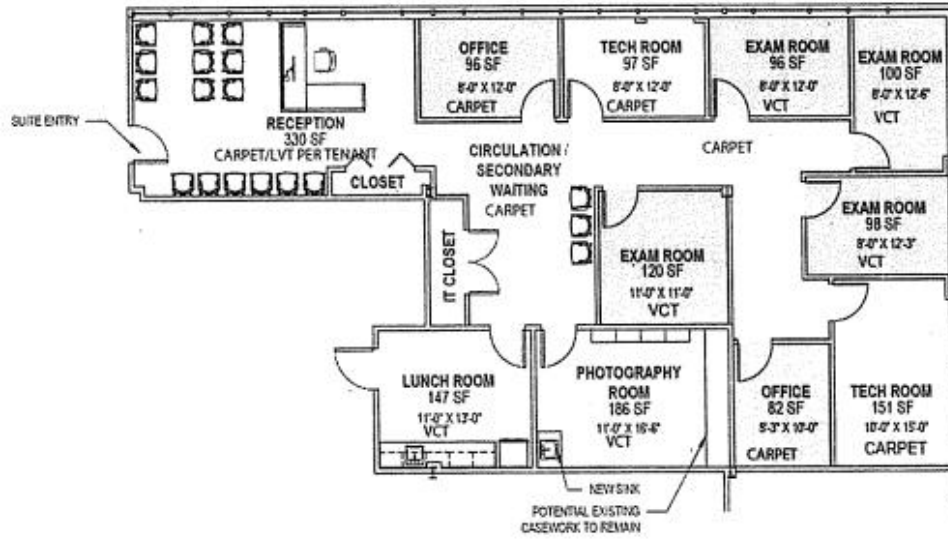
Lunch/break room included

## HIGHLIGHTS

- Medical/office ready for immediate healthcare use
- Photography room for specialized needs
- Circulation and waiting areas
- Technology/server room available
- Mixed carpet and VCT flooring areas
- Professional medical buildout in place



## FLOOR PLAN - SUITE 125



## ADDITIONAL VIEWS

