

Loma Starr OFFICE BUILDING

FOR LEASE

Loma Starr

3065

3065
Rosecrans Place

San Diego, CA 92110



McKeeCommercialRealEstate.com

Keith Herbert

Director

KHerbert@mckeecompany.com

619.642.2711 x205

CalDRE #01892190

James Shelton

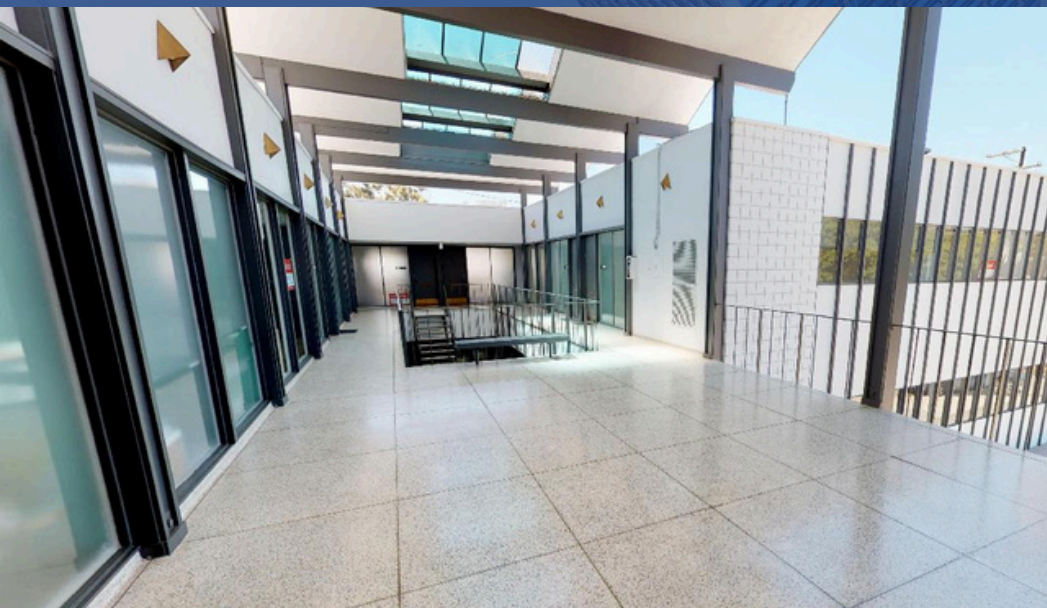
VP, Leasing & Sales

jshelton@mckeecompany.com

619.642.2711 x222

CalDRE #02091906

Loma Starr OFFICE BUILDING



26,000 SF Office Building

Loma Starr is centrally located in the heart of Point Loma near Rosecrans Street & Lytton Street/Barnett Avenue. This updated office building boasts attractive improvements, including landscaping, modernized restrooms, and a renovated elevator. The property also offers secured, covered, and gated garage parking for business owners, employees, and guests.



New Landscaping



Central, Point Loma,
San Diego location



Close Proximity to Liberty Station



Secured Covered, Gated, Garage Parking
Available



McKeeCommercialRealEstate.com

Keith Herbert

Director

KHerbert@mckeecompany.com

619.642.2711 x205

CalDRE #01892190

James Shelton

VP, Leasing & Sales

jshelton@mckeecompany.com

619.642.2711 x222

CalDRE #02091906



Loma Starr Office Building

Loma Starr is centrally located in the heart of Point Loma near Rosecrans Street & Lytton Street/Barnett Avenue.

Conveniently Located

Located one block from Liberty Station, which offers many dining and entertainment choices, such as Stone Brewery, Slaters 50/50, Breakfast Republic, The Lot, and more.

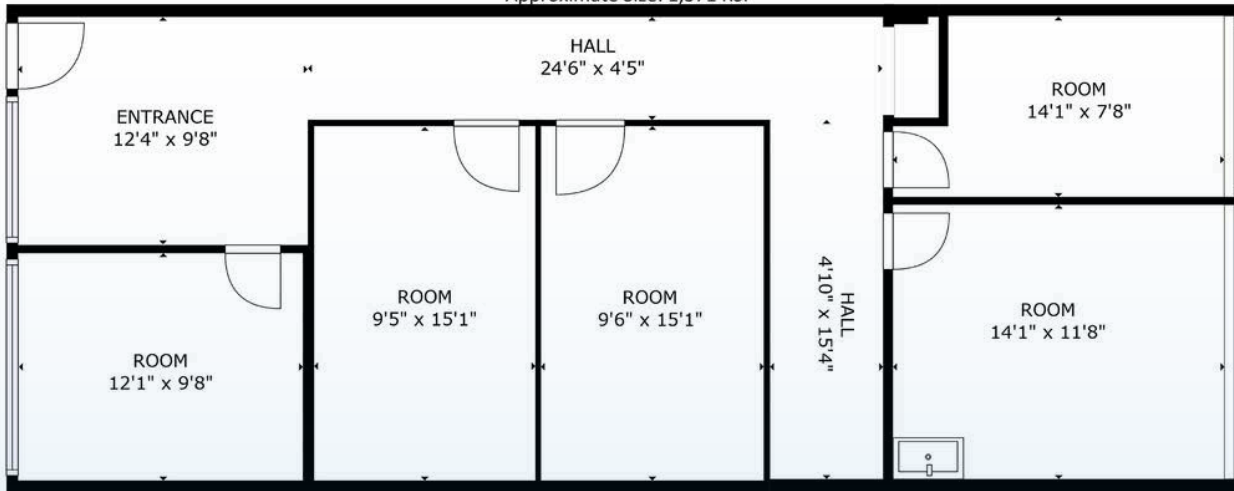
Accommodations & Attractions

Numerous Shopping, Dining, and Entertainment Options Located Nearby!

Suite 202

1,371 RSF

3065 Rosecrans, Suite 202
San Diego, CA 92110
Approximate Size: 1,371 RSF



Suite Details

- 5 private offices w/ lots of natural light
- Reception Area

Location: Second Floor Suite Near Elevator

[Virtual Tour](#)



McKeeCommercialRealEstate.com

Keith Herbert

Director

KHerbert@mckeecompany.com

619.642.2711 x205

CalDRE #01892190

James Shelton

VP, Leasing & Sales

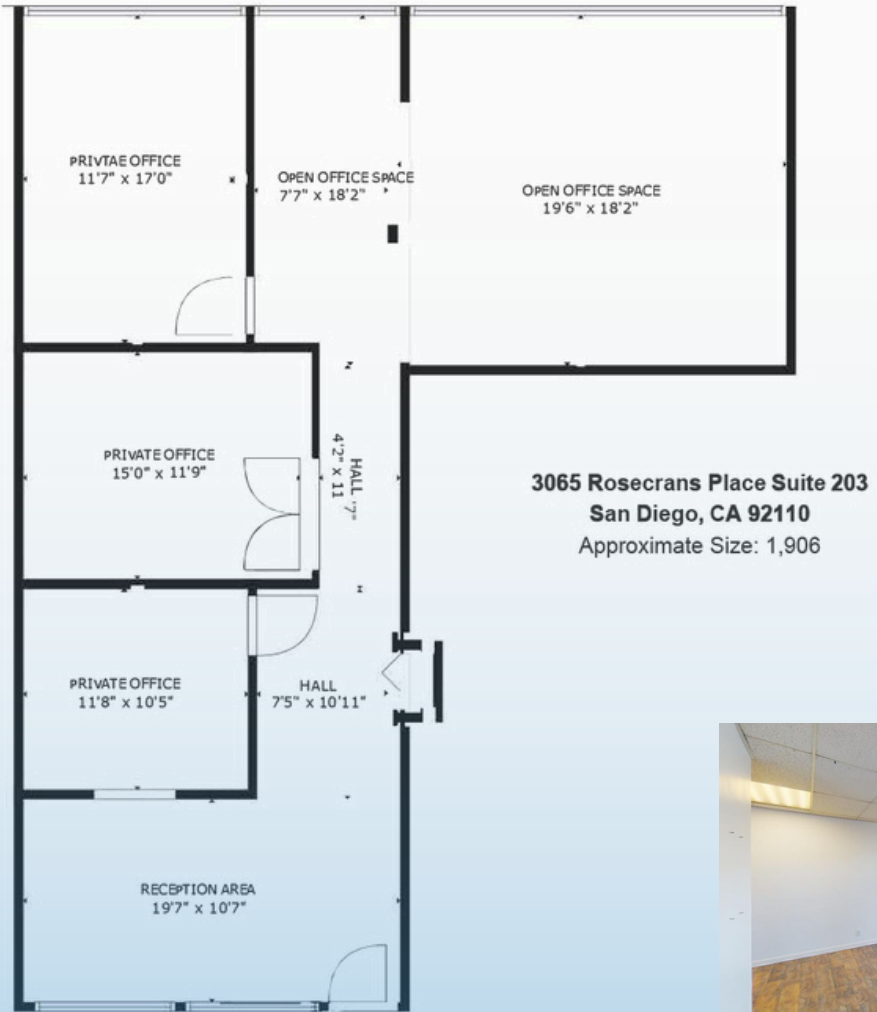
jshelton@mckeecompany.com

619.642.2711 x222

CalDRE #02091906

Suite 203

1,906 RSF



Suite Details

- 3 Private Offices
- Reception Area
- Open Office Space

Location: Second Floor Suite

[Virtual Tour](#)



McKeeCommercialRealEstate.com

Keith Herbert
Director
KHerbert@mckeecompany.com
619.642.2711 x205
CalDRE #01892190

James Shelton
VP, Leasing & Sales
jshelton@mckeecompany.com
619.642.2711 x222
CalDRE #02091906

Suite 205

1,467 RSF



3065 Rosecrans Pl, Suite 205
San Diego, CA 92110
Approx. Size: 1,467 RSF



Suite Details

- 1 Private Office
- Open Office Area
- Kitchenette

Location: Second Floor,
Corner Suite

[Virtual Tour](#)

McKee
COMMERCIAL
LEASE | MANAGE | INVEST



McKeeCommercialRealEstate.com

Keith Herbert

Director

KHerbert@mckeecompany.com

619.642.2711 x205

CalDRE #01892190

James Shelton

VP, Leasing & Sales

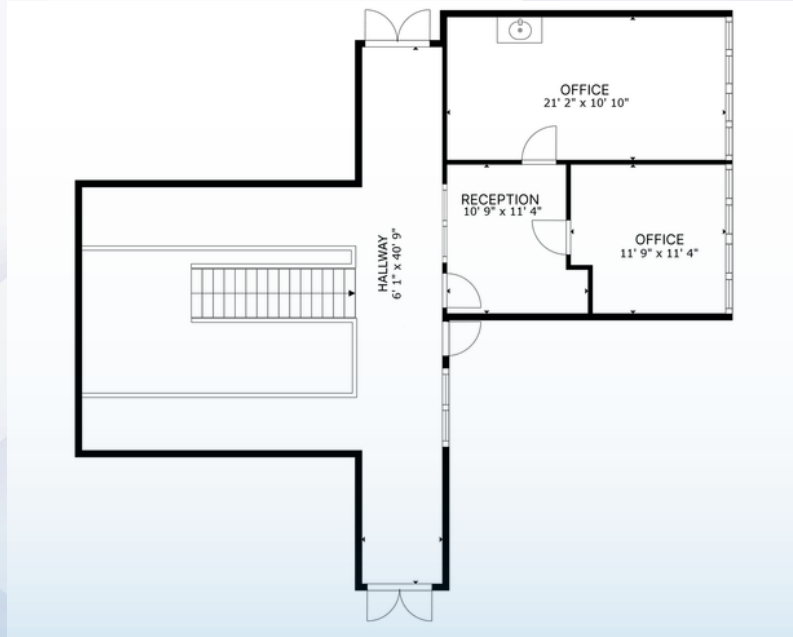
jshelton@mckeecompany.com

619.642.2711 x222

CalDRE #02091906

Suite 206

656 RSF



Suite Details

- 2 Private Office
- Reception
- Recently updated flooring and paint

Location: Second Floor

[Virtual Tour](#)

McKee
COMMERCIAL
LEASE | MANAGE | INVEST



McKeeCommercialRealEstate.com

Keith Herbert

Director

KHerbert@mckeecompany.com

619.642.2711 x205

CalDRE #01892190

James Shelton

VP, Leasing & Sales

jshelton@mckeecompany.com

619.642.2711 x222

CalDRE #02091906

LOMA STARR OFFICE BUILDING



3065 Rosecrans Place
San Diego, CA 92110



Keith Herbert
Director
KHerbert@mckeecompany.com
619.642.2711 x205
CalDRE #01892190



James Shelton
VP, Leasing & Sales
jshelton@mckeecompany.com
619.642.2711 x222
CalDRE #02091906

[Virtual Tour](#)

Disclaimer:

This notice is provided to all Brokers/Agents, and or any party interested in the property, or other suite vacancies in connection with the Broker/Agent below. The information contained herein has been obtained from sources believed to be reliable. Keith Herbert and James Shelton (Broker/Agent) makes no guaranties or warranties as to the accuracy thereof. The presentation of the property is submitted subject to the possibility of errors, omissions, change of price, pending/ prior sale, or other conditions, lease or financing, or withdrawal without notice. Information is provided for courtesy/guidance only and does not constitute all or any part of a contract. Brokers/agents, and or any party interested should review local building codes, ordinances, and other applicable laws to determine their effect on the property. Selection of experts, inspectors, and repairmen is the responsibility of Brokers/Agent, and or any party interested.