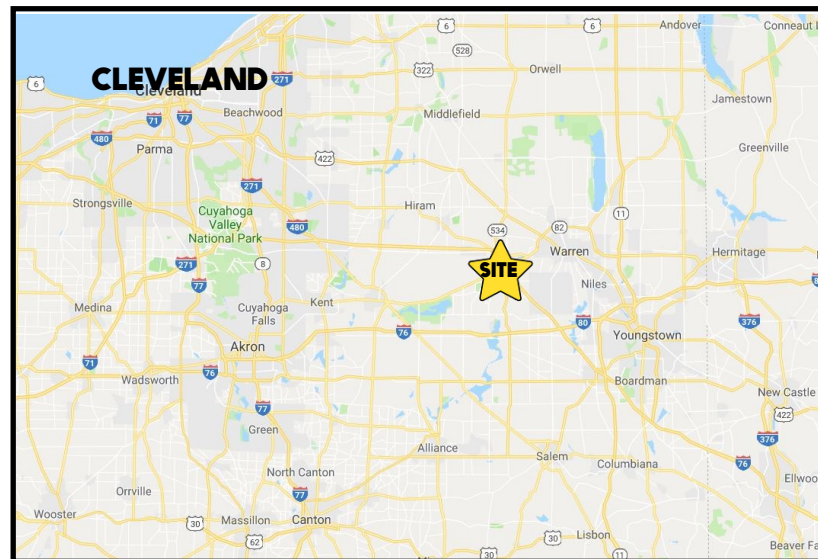


## LOCATION

940 Boardman Poland Rd, Boardman, OH 44512



## HIGHLIGHTS

- Fast food restaurant on US 224 in Boardman, OH
- Located by US 224 / South Ave
- Taco Bell will vacate October 2025
- Parking lot recently resealed
- HVAC replaced in 2022

## TRAFFIC

Boardman Poland Rd = 32,730 VPD

## CONTACT

### MATT WILSON

330.347.9677      mwilson@platzrealtygroup.com

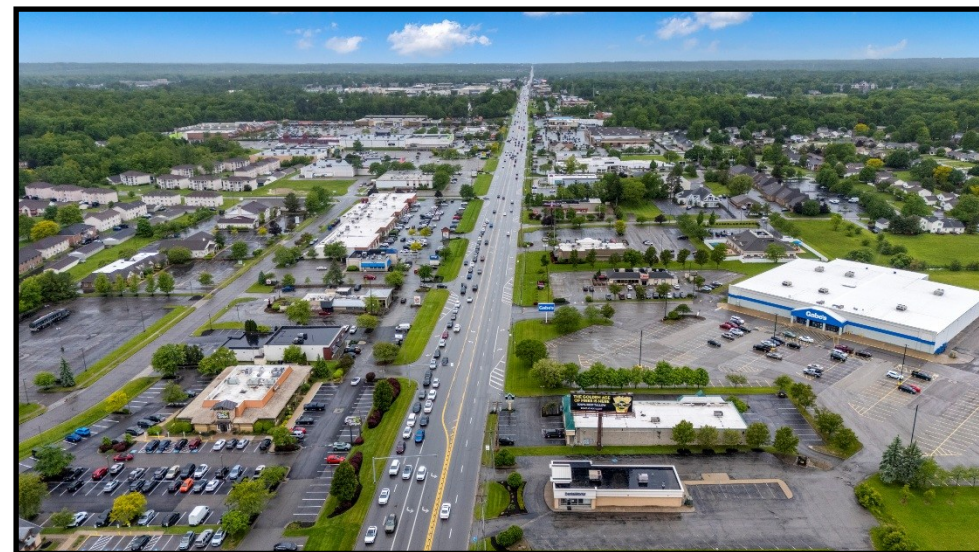
### BILL KUTLICK

330.565.5701      bkutlick@platzrealtygroup.com

Office: 330.757.4889 | Fax: 330.294.5622 | 3830 Starr Centre Dr, Suite 2, Canfield, OH 44406

**www.PLATZREALTYGROUP.com**

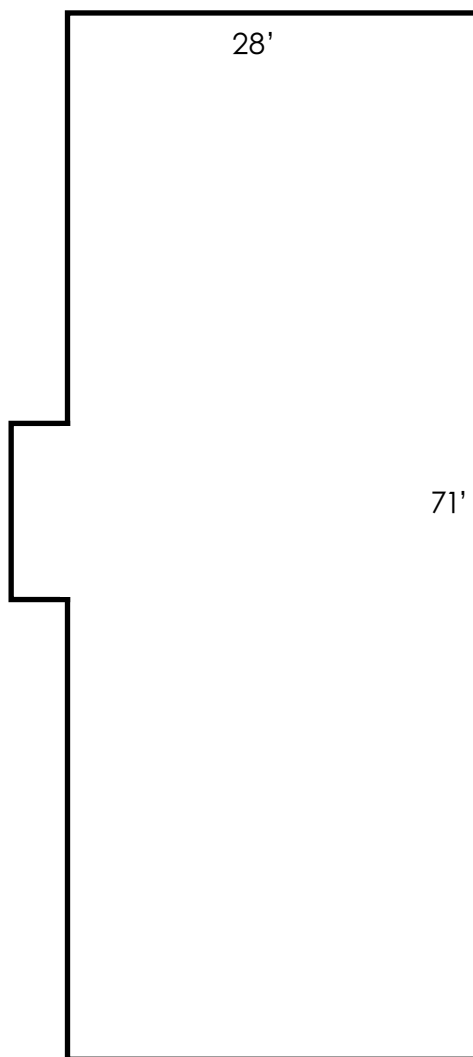




Office: 330.757.4889 | Fax: 330.294.5622 | 3830 Starr Centre Dr, Suite 2, Canfield, OH 44406

**[www.PLATZREALTYGROUP.com](http://www.PLATZREALTYGROUP.com)**

The information presented was obtained from sources believed to be true and reliable. The Platz Realty Group makes no warranties or guarantees to the accuracy of the information.



Office: 330.757.4889 | Fax: 330.294.5622 | 3830 Starr Centre Dr, Suite 2, Canfield, OH 44406

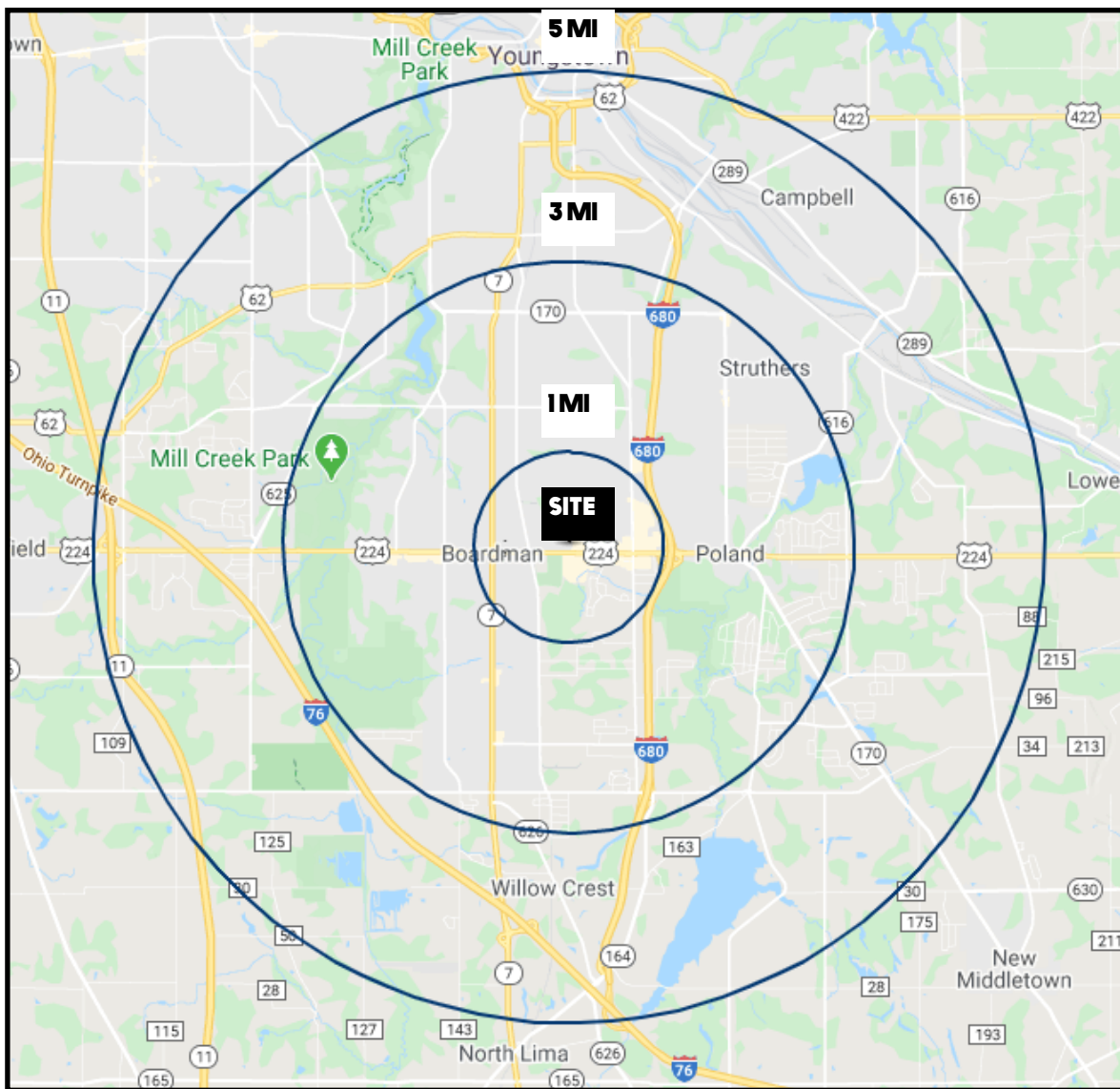
**[www.PLATZREALTYGROUP.com](http://www.PLATZREALTYGROUP.com)**

The information presented was obtained from sources believed to be true and reliable. The Platz Realty Group makes no warranties or guarantees to the accuracy of the information.









DEMOGRAPHICS	1MI	3MI	5MI
<b>POPULATION</b>	5,004	56,771	112,902
<b>HOUSEHOLDS</b>	2,150	24,497	47,553
<b>AVERAGE AGE</b>	44	43	42
<b>MEDIAN HH INCOME</b>	\$66,603	\$56,264	\$50,718

SITE INFORMATION	
<b>LOCATION</b>	Boardman Township Mahoning County
<b>PROPERTY TYPE</b>	Fast food restaurant
<b>ZONING</b>	Commercial / Regional Business
<b>SIZE</b>	2,036 SF on .824 acres Lot: 132' x 276'
<b>REAL ESTATE TAXES</b>	\$16,351/year
<b>BASE RENT</b>	Call for pricing

Office: 330.757.4889 | Fax: 330.294.5622 | 3830 Starr Centre Dr, Suite 2, Canfield, OH 44406

**www.PLATZREALTYGROUP.com**