



for
LEASE
WAREHOUSE SPACE

EXCLUSIVELY LISTED BY:

Taylor Halsey Realtor®
870.926.4588 | taylor.halsey@hthreg.com
Landon Wilson Realtor®
870.514.5578 | landon.wilson@hthreg.com

No warranty expressed or implied has been made as to the accuracy of this information, no liability assumed for errors or omissions.

HalseyThrasherHarpole.com (870) 972-9191

OPPORTUNITY OVERVIEW

SIZE: 22,500+/- SF

PRICE: \$3.25/sf gross

PROPERTY HIGHLIGHTS

- Large Warehouse Space
- Located on the Kiech Schauer Miller Gin
- High Visibility from Hwy-18
- Located at the North Entrance to Monette's Business District



EXECUTIVE SUMMARY

This warehouse space offers a prime opportunity for businesses seeking a strategic location for their operations. Situated in Monette, AR, this warehouse enjoys proximity to major transportation routes facilitating efficient logistics and distribution networks. Monette's location makes it an attractive destination for businesses seeking to capitalize on emerging opportunities in the region, as it offers easy access to markets across Arkansas and beyond.

With ample space available, the warehouse can accommodate a wide range of storage and operational needs. Its flexible layout allows for customization according to specific requirements. Equipped with amenities, including loading docks and high ceilings, the facility ensures seamless operations.

200 N Edmonds St presents a compelling opportunity for businesses seeking a strategic location. Its prime location, coupled with competitive advantages, positions it as a premier choice for tenants looking to establish or expand their operations in the Monette area.



870.930.8008 | jerry.halsey@hthreg.com 870.926.4588 | taylor.halsey@hthreg.com

No warranty expressed or implied has been made as to the accuracy of this information, no liability assumed for errors or omissions.

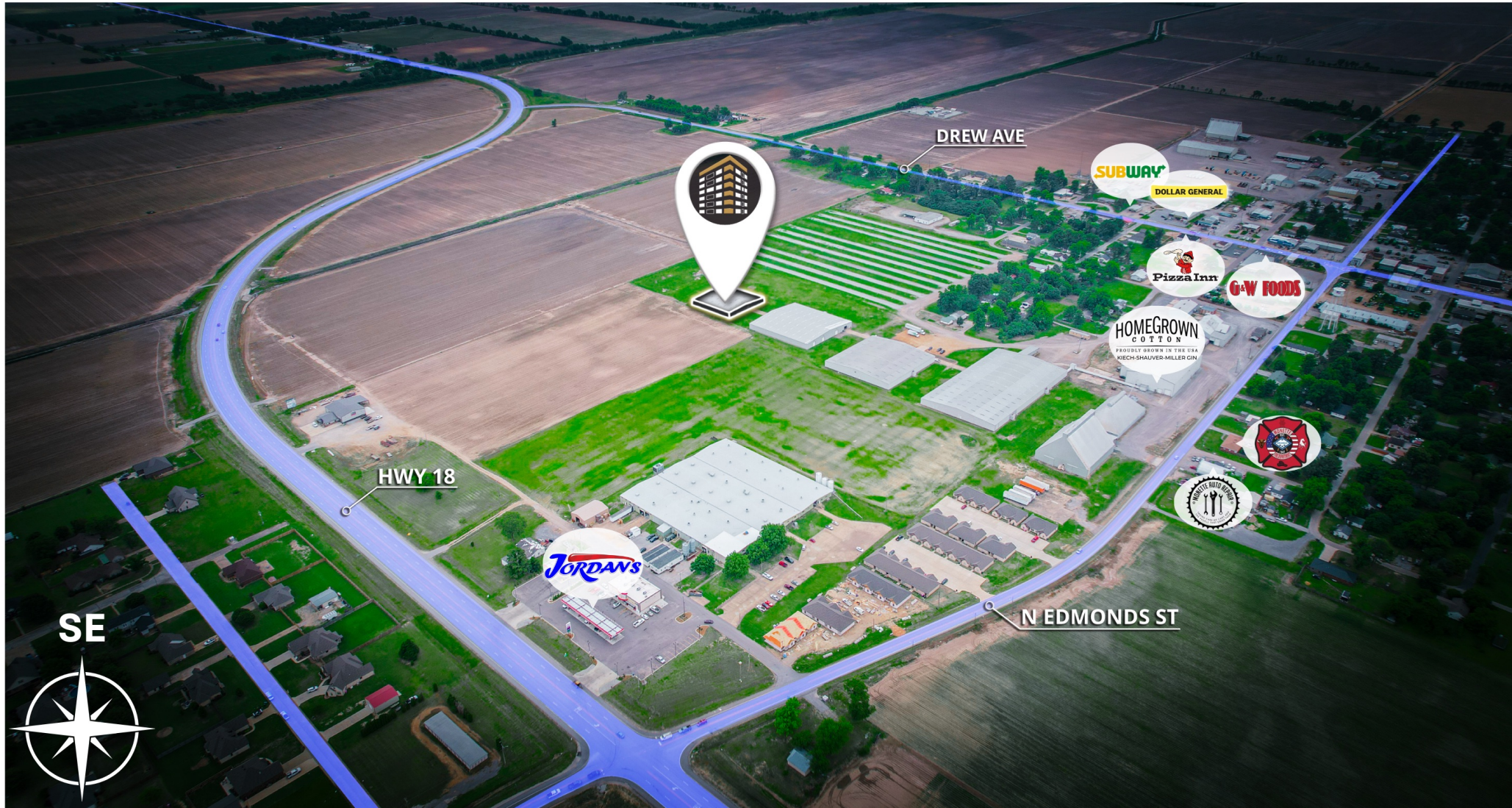
HalseyThrasherHarpole.com (870) 972-9191



taylor.halsey@hthreg.com | 870.926.4588 landon.wilson@hthreg.com | 870.514.5578

No warranty expressed or implied has been made as to the accuracy of this information, no liability assumed for errors or omissions.

HalseyThrasherHarpole.com (870) 972-9191

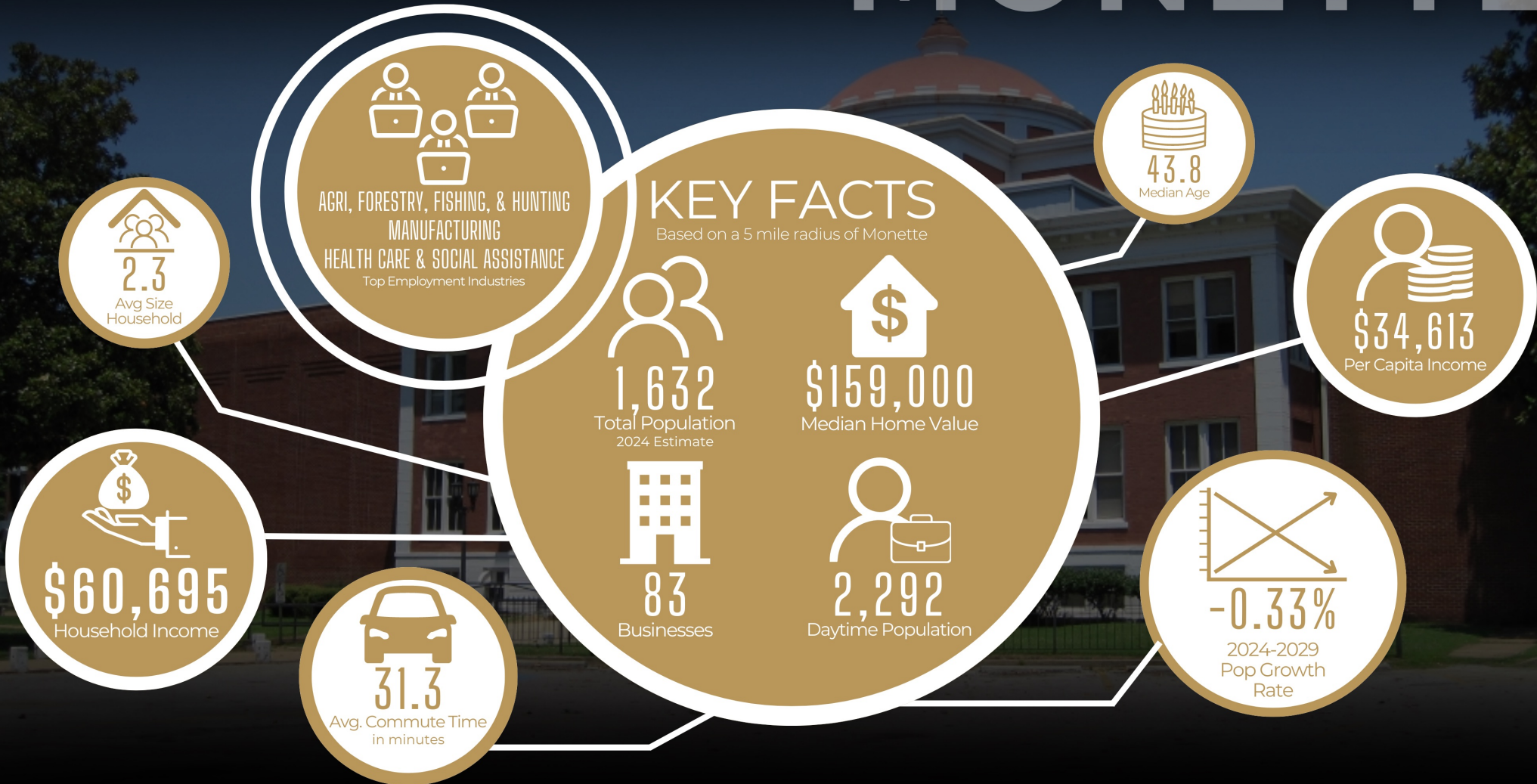


taylor.halsey@hthreg.com | 870.926.4588 landon.wilson@hthreg.com | 870.514.5578

No warranty expressed or implied has been made as to the accuracy of this information, no liability assumed for errors or omissions.

HalseyThrasherHarpole.com (870) 972-9191

MONETTE





**HALSEY
THRASHER
HARPOLE**
— Real Estate Group —

THE  **HALSEY**
TEAM

NO SMOKING

