



THE ATRIUM  
MEDICAL OFFICE BUILDING

502

502

# ATRIUM OUTPATIENT MEDICAL

CLASS A MEDICAL SPACE | 502 MADISON OAK DR, SAN ANTONIO, TEXAS

# ATRIUM OUTPATIENT MEDICAL

502 Madison Oak Dr. San Antonio, TX 78258

  
TRANSWESTERN



## AVAILABILITY

- Suite 130: 2,607 SF ***\*Move-in Ready***
- Suite 342: 1,365 SF ***\*Shell***
- Suite 343: 2,078 SF ***\*Spec Suite***
- Suite 410: 3,878 SF ***\*Shell***

## SPECS

- 5-Story Class A Medical Office
- 132,148 Square Feet
- Garage & Surface Parking
- Generous TI Allowance

## BUILDING AMENITIES

- Directly Attached to North Central Baptist Hospital
- New On-Site Cafe Available to Tenants & Guests
- Located Along Stone Oak Parkway Near Loop 1604
- Nearby Retail and Restaurants
- 24-Hour Card Key Access
- On-Site Property Management

FOR LEASING INFORMATION CONTACT:

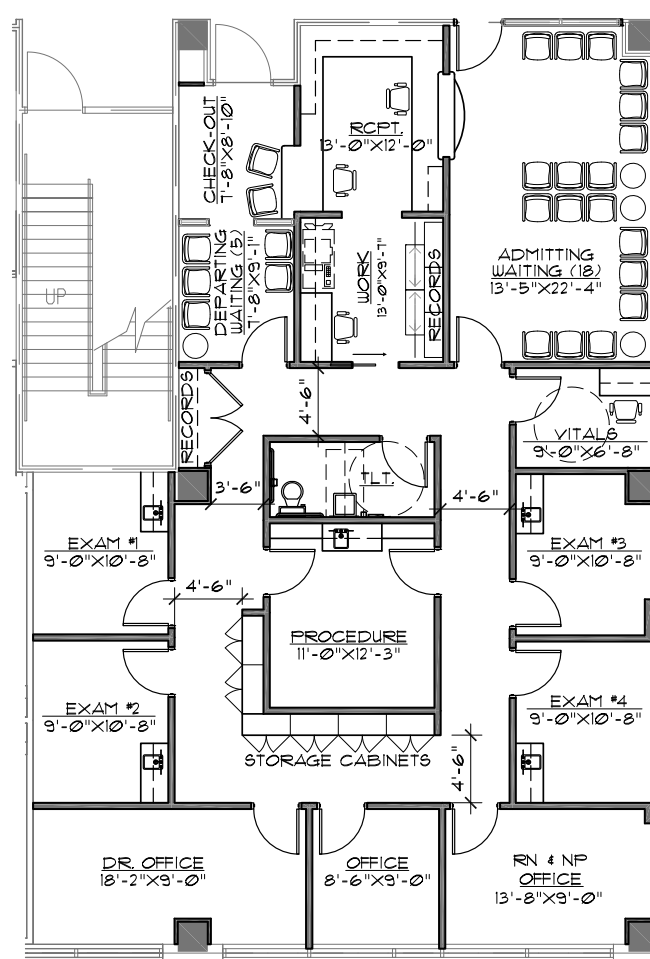
LICIA SALINAS ■ 210.253.2931 ■ [licia.salinas@transwestern.com](mailto:licia.salinas@transwestern.com)

# ATRIUM OUTPATIENT MEDICAL

502 Madison Oak Dr. San Antonio, TX 78258

## SUITE 130: 2,607 SF

- 2nd Generation Medical Office
- Waiting Room
- Reception Area
- Private Restroom
- Nurse's Station
- Physician's Office
- 4 Exam Rooms
- Storage Room

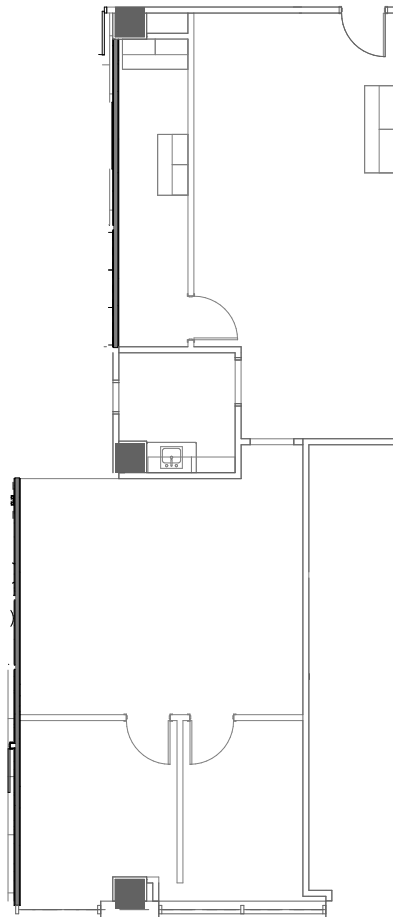


# ATRIUM OUTPATIENT MEDICAL

502 Madison Oak Dr. San Antonio, TX 78258

## SUITE 342: 1,365 SF

- Generous TI available
- Customized finish out



FOR LEASING INFORMATION CONTACT:

LICIA SALINAS ■ 210.253.2931 ■ [licia.salinas@transwestern.com](mailto:licia.salinas@transwestern.com)

# ATRIUM OUTPATIENT MEDICAL

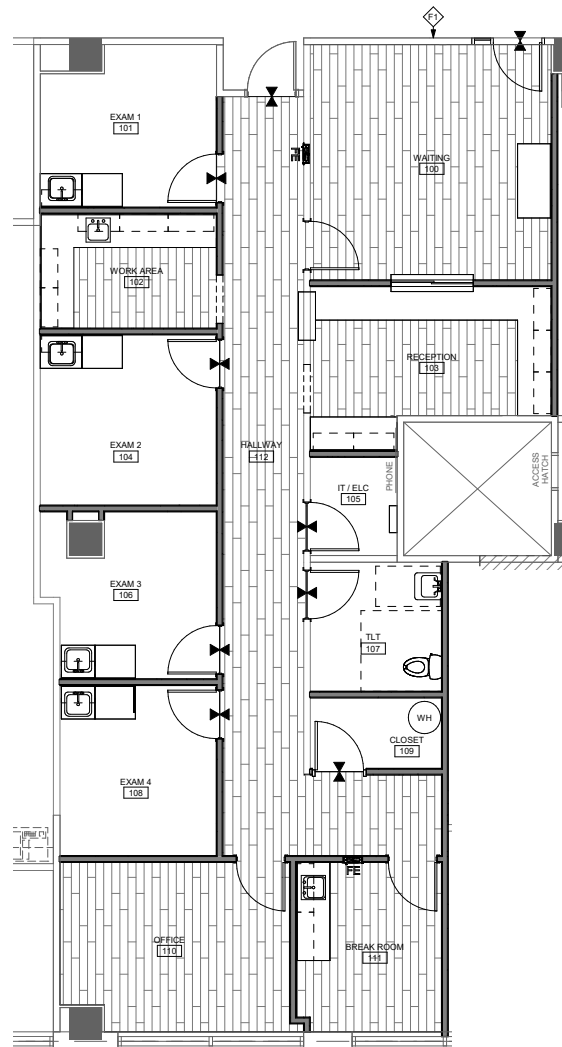
502 Madison Oak Dr. San Antonio, TX 78258

## SUITE 343: 2,078 SF

- Spec Suite
- Waiting Room
- Reception Area
- Break Room
- 4 Exam Rooms
- Work Area
- Private Restroom
- Private Office
- IT Closet
- Secondary Exit



LINK TO VIDEO TOUR

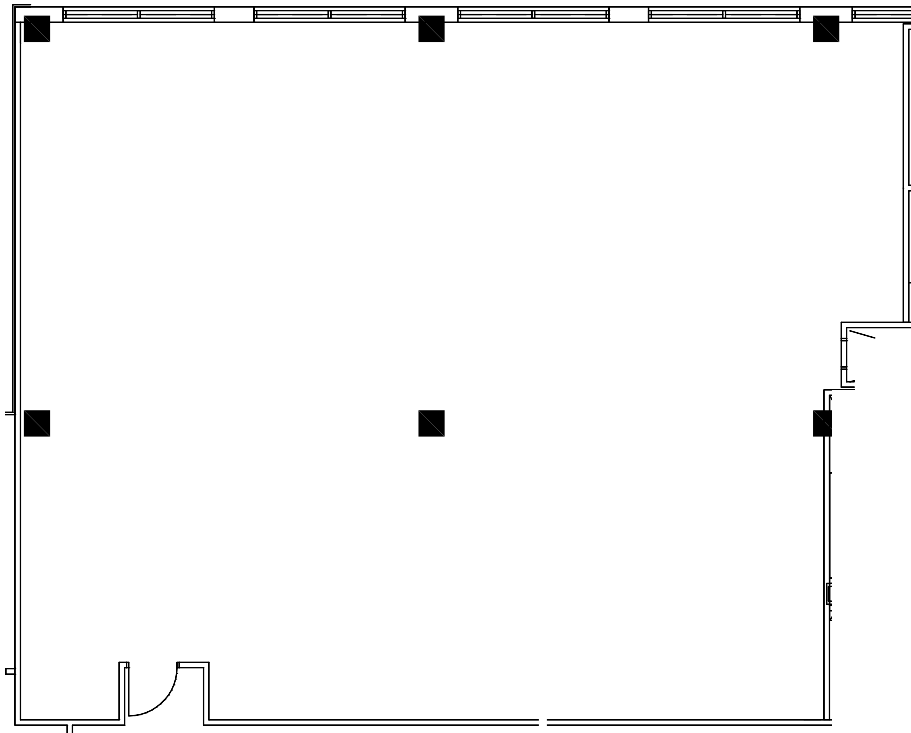


# ATRIUM OUTPATIENT MEDICAL

502 Madison Oak Dr. San Antonio, TX 78258

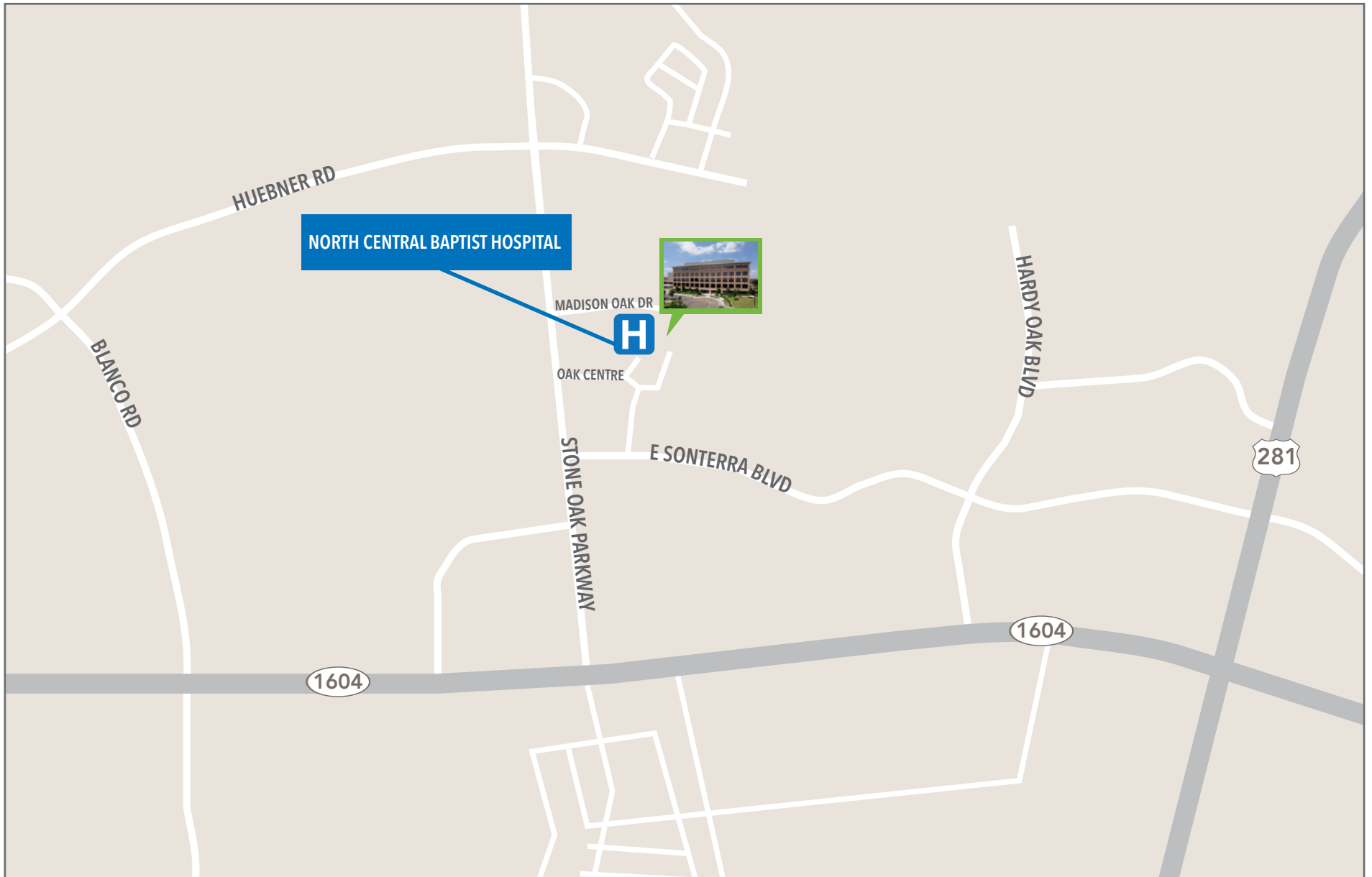
## SUITE 410: 3,878 SF

- Generous TI available
- Customized finish out



# ATRIUM OUTPATIENT MEDICAL

502 Madison Oak Dr. San Antonio, TX 78258



FOR LEASING INFORMATION CONTACT:

'LICIA SALINAS ■ 210.253.2931 ■ [licia.salinas@transwestern.com](mailto:licia.salinas@transwestern.com)