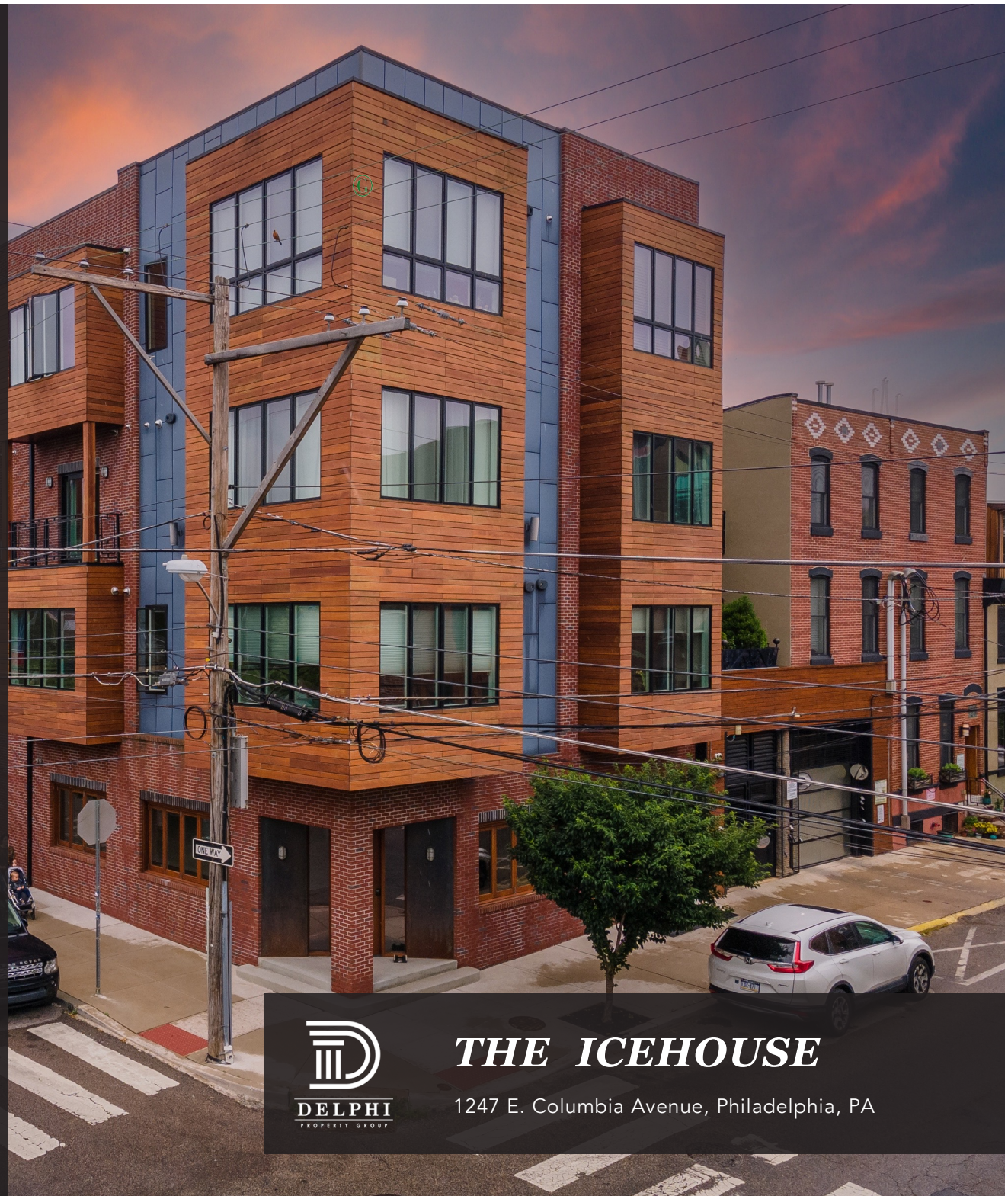




## *HIGHLIGHTS*

LEASE 2,153 SF  
BI-LEVEL & BOUTIQUE  
HEART OF FISHTOWN  
36 NEW CONSTRUCTION UNITS  
CORNER INTERSECTION  
ACROSS FROM PARK  
FULLY FIT-OUT



## *THE ICEHOUSE*

1247 E. Columbia Avenue, Philadelphia, PA



# THE ICEHOUSE

1247 E. Columbia Avenue, Philadelphia, PA

**Delphi Property Group, LLC.**

215-627-7300

[INFO@DELPHIPG.COM](mailto:INFO@DELPHIPG.COM)

[DELPHIPG.COM](http://DELPHIPG.COM)



## ***Prime Retail / Office Space***

- Bi-Level retail / office located in the Icehouse featuring 36 luxury condominium units above
- 895 SF on ground level and 1,258 SF in lower level
- Situated at the corner of E. Thompson and E. Columbia Avenue, across from Hetzell Playground
- Ideal for general office use with main floor and bullpen area OR boutique restaurant/coffee shop with serving and take-out on ground floor and seating / kitchen in lower level OR general office



# THE ICEHOUSE

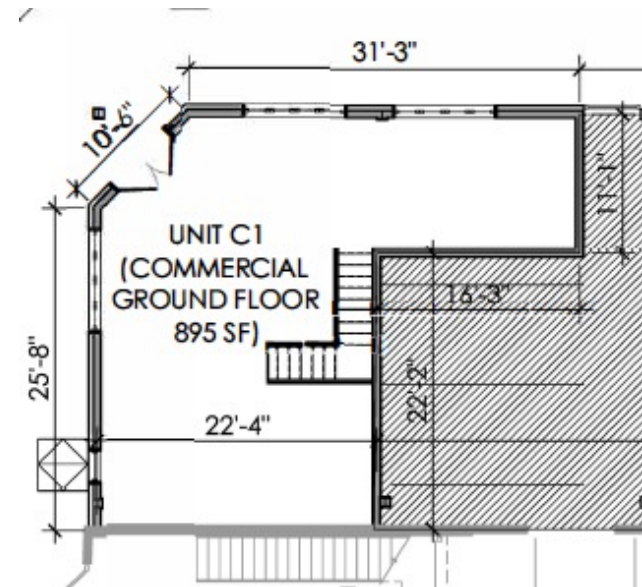
1247 E. Columbia Avenue, Philadelphia, PA

*Delphi Property Group, LLC.*

215-627-7300

[INFO@DELPHIPG.COM](mailto:INFO@DELPHIPG.COM)

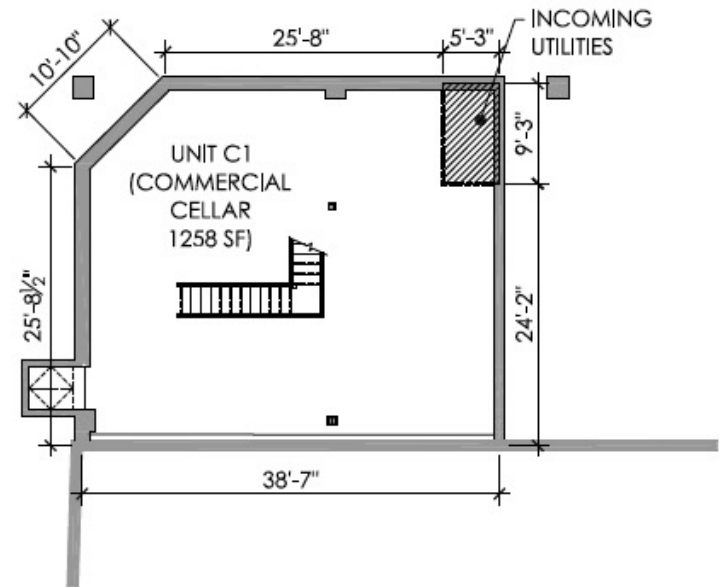
[DELPHIPG.COM](http://DELPHIPG.COM)





1247 E. Columbia Avenue, Philadelphia, PA

DELPHIPG.COM





# THE ICEHOUSE

1247 E. Columbia Avenue, Philadelphia, PA

Delphi Property Group, LLC.

215-627-7300

[INFO@DELPHIPG.COM](mailto:INFO@DELPHIPG.COM)

[DELPHIPG.COM](http://DELPHIPG.COM)

