

BUSHWICK PAPER MILL



456 JOHNSON AVENUE | BROOKLYN

AVAILABILITIES

**All units available as office/ studio space only. There is no retail in the building.

FIRST FLOOR

UNIT	USF	MONTHLY RENT
104/105	4240	\$12365

SECOND FLOOR

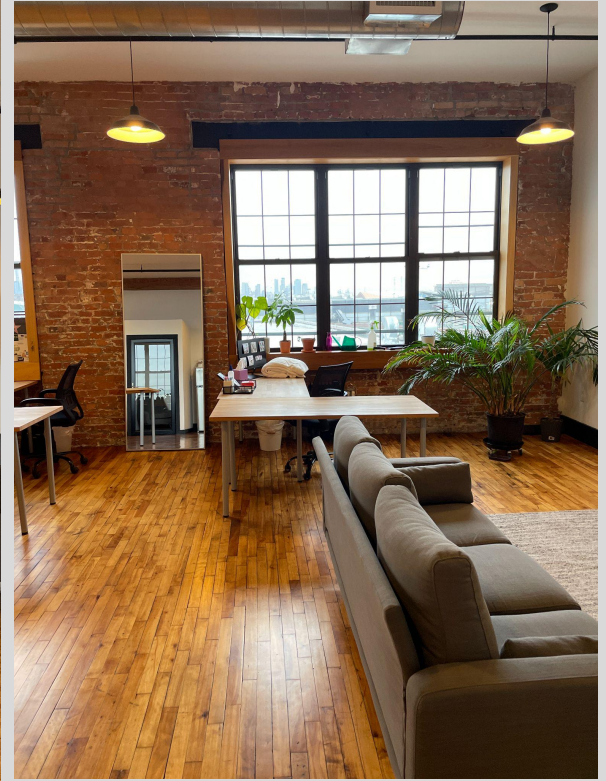
UNIT	RSF	MONTHLY RENT
204	2074	\$5720
210	756	\$2600
222	1604	\$4540

THIRD FLOOR

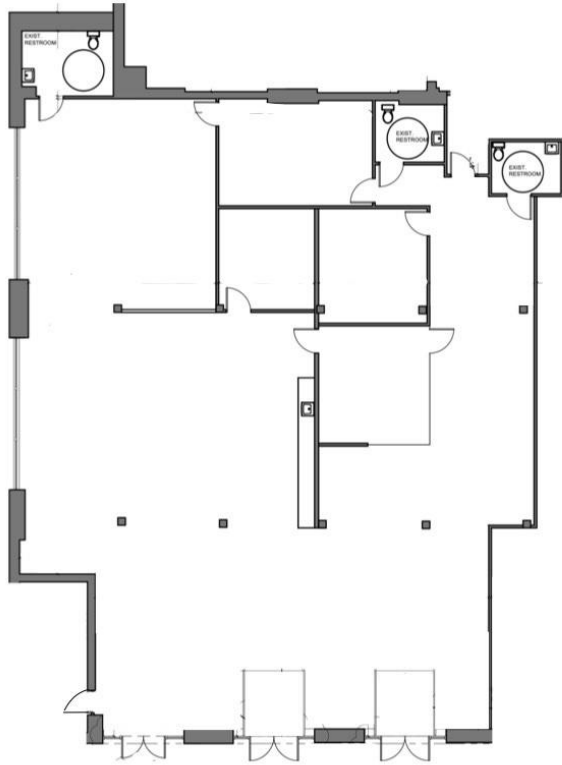
UNIT	RSF	MONTHLY RENT
303	1028	\$3500
311	756	\$2700
313	1264	\$4200





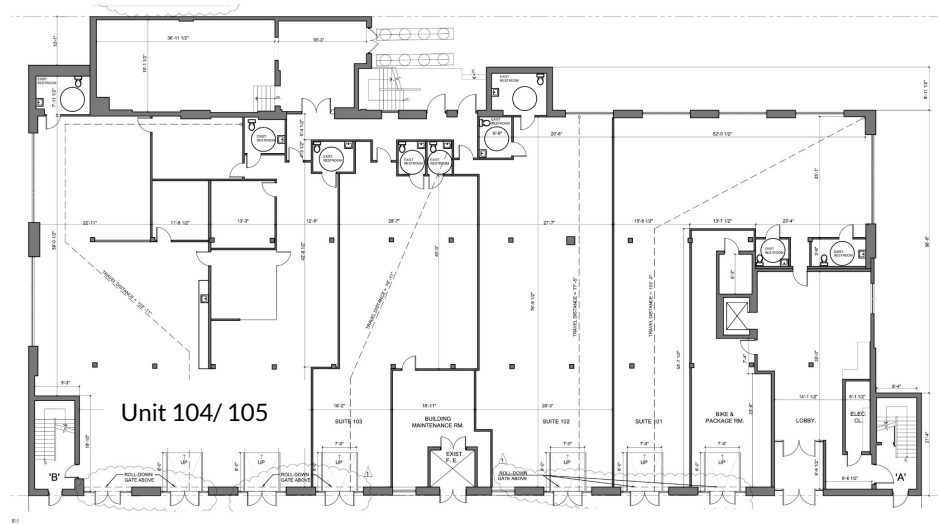


Unit 104/105



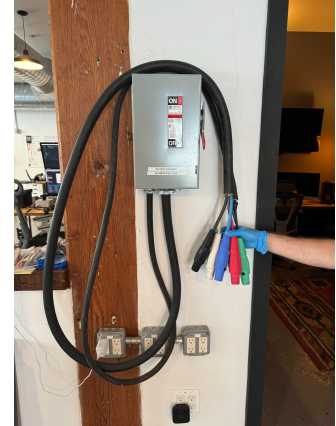
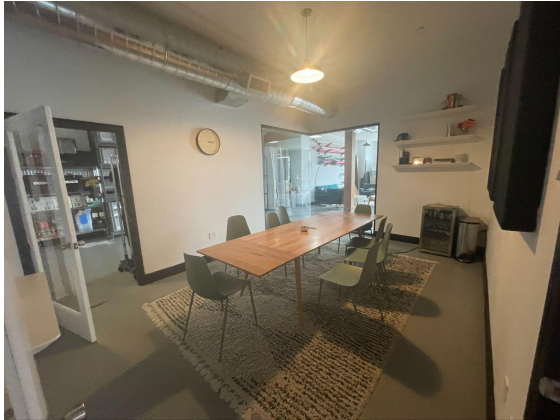
- Ground floor space with direct sidewalk access 3 private offices, 1 private conference room and 3 private restrooms
- Turnkey video or photography studio including 3 phase power with a 5 wire connection

USF: 4240
Monthly Rent: \$12365



Johnson Avenue

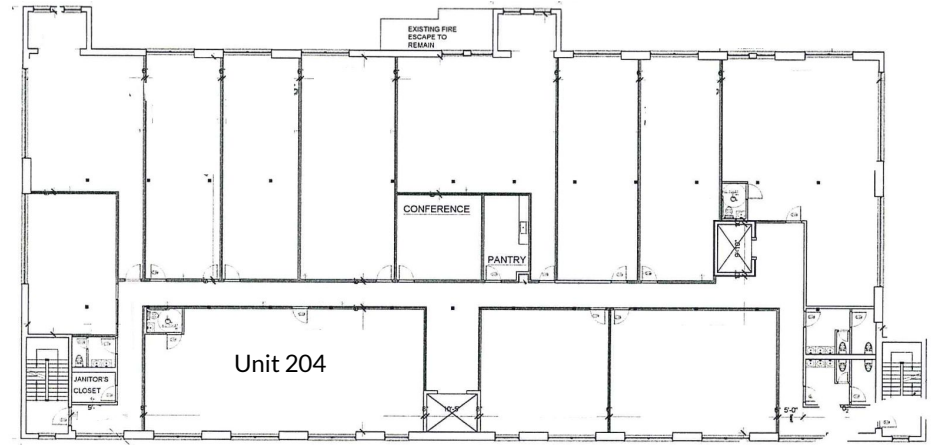
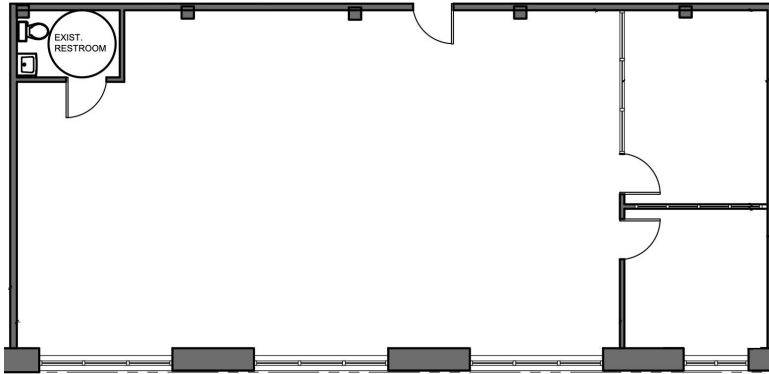
Unit 104 / 105



Unit 204

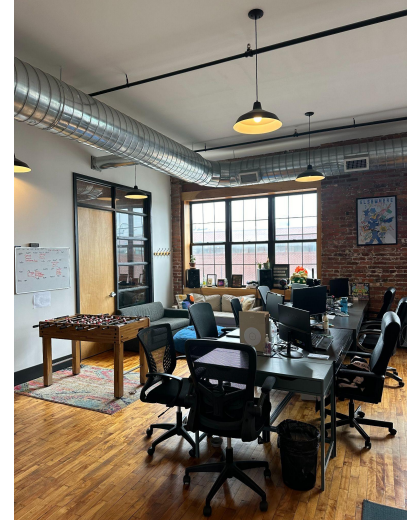
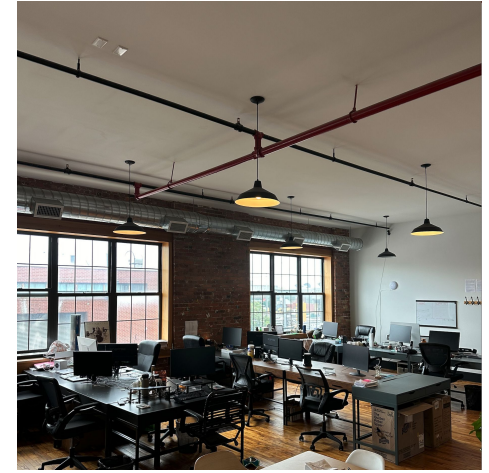
RSF: 2074

Monthly Rent: \$5720



Johnson Avenue

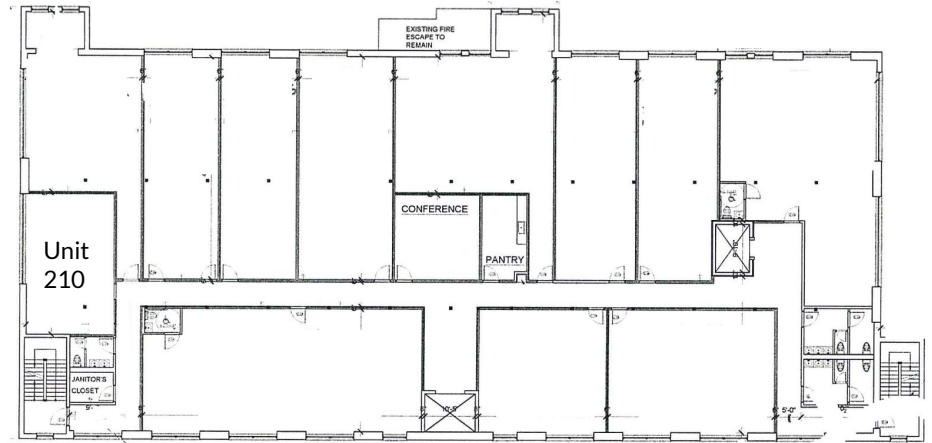
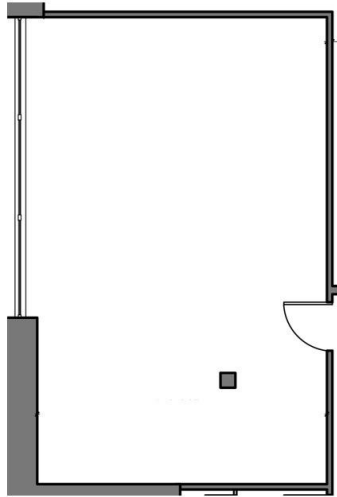
Unit 204



Unit 210

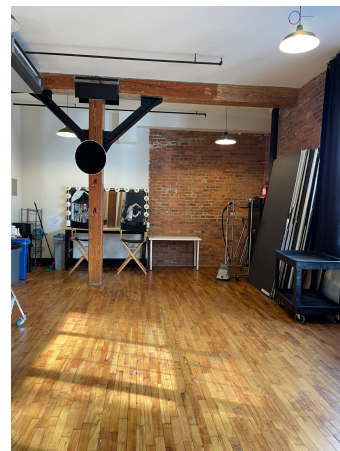
RSF: 756

Monthly Rent: \$2600



Johnson Avenue

Unit 210

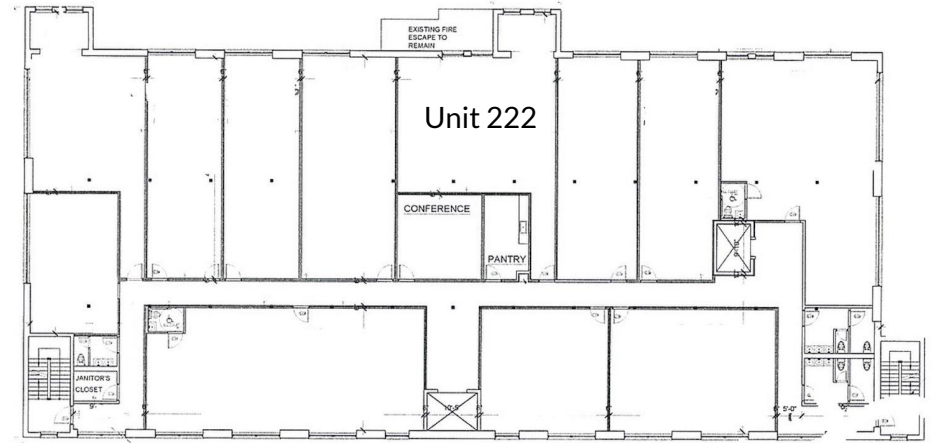
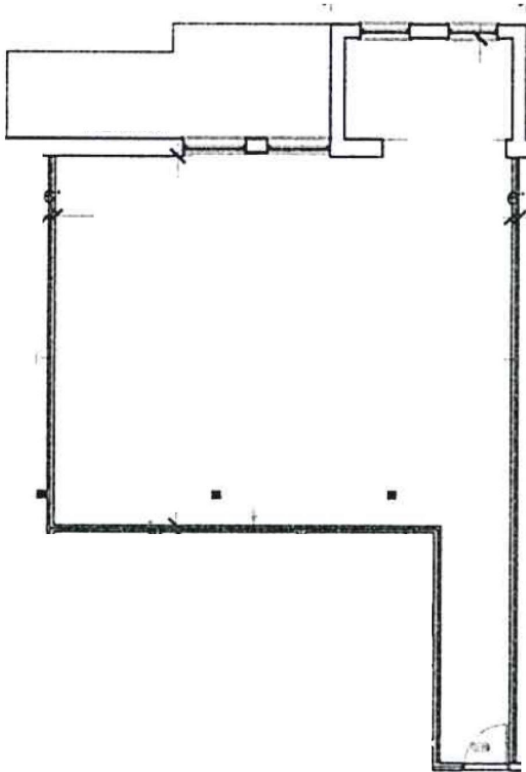


Unit 222

- Turnkey photography studio available with highly coveted cyclorama (“cyc”) wall
- Private terrace

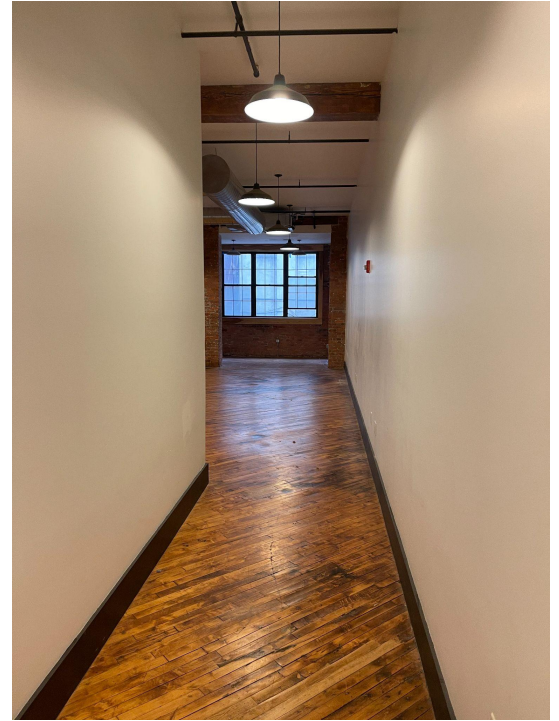
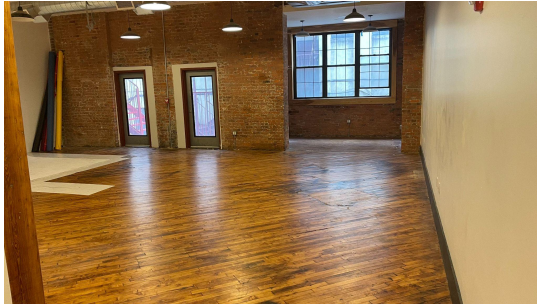
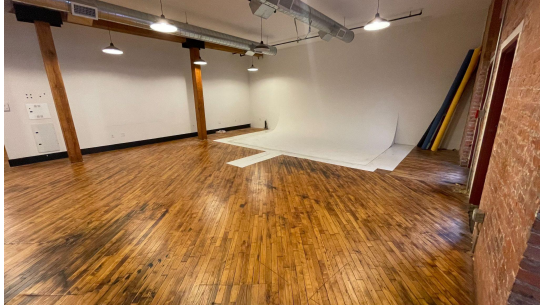
RSF: 1604

Monthly Rent: \$4540

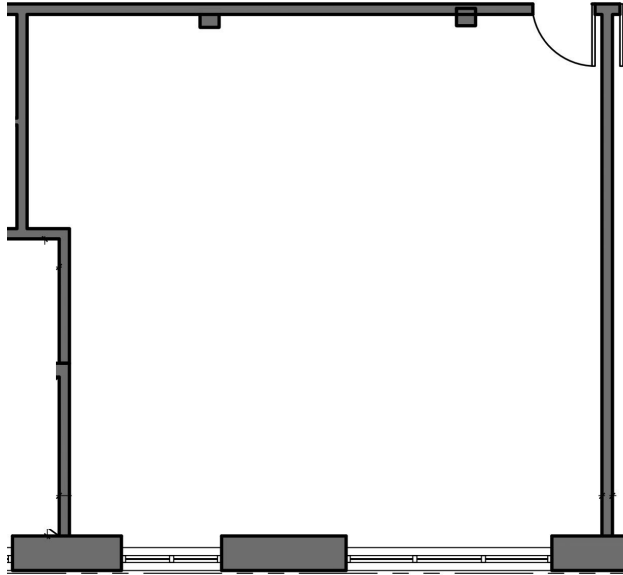


Johnson Ave

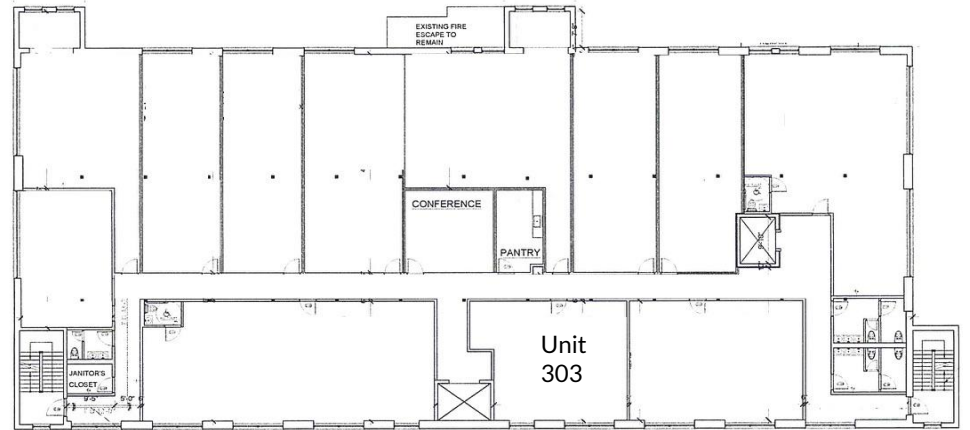
Unit 222



Unit 303



RSF: 1028
Monthly Rent: \$3500



Johnson Avenue

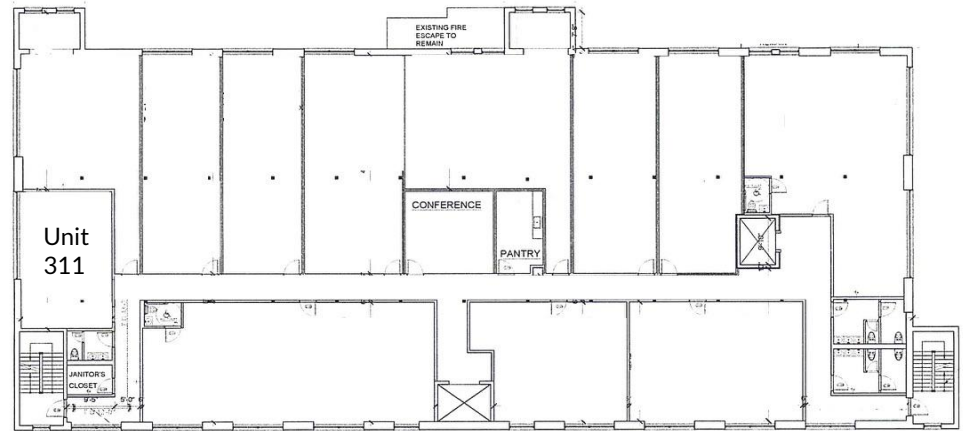
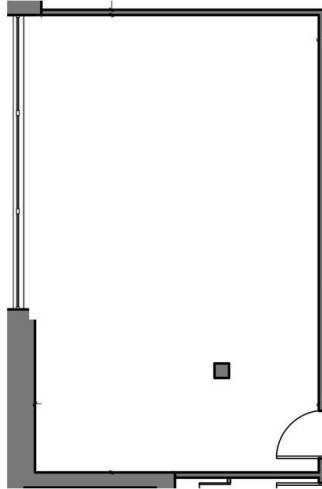
Unit 303



Unit 311

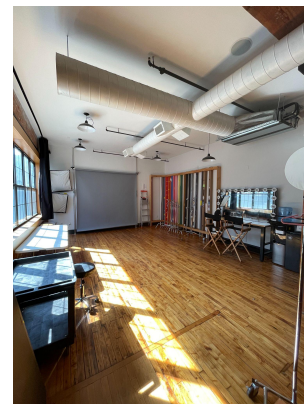
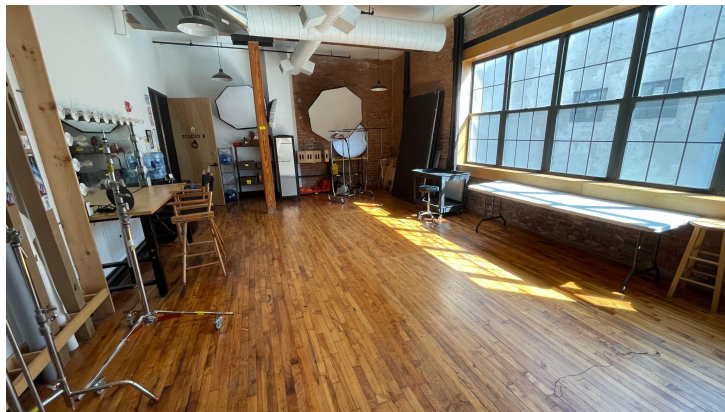
RSF: 756

Monthly Rent: \$2700



Johnson Avenue

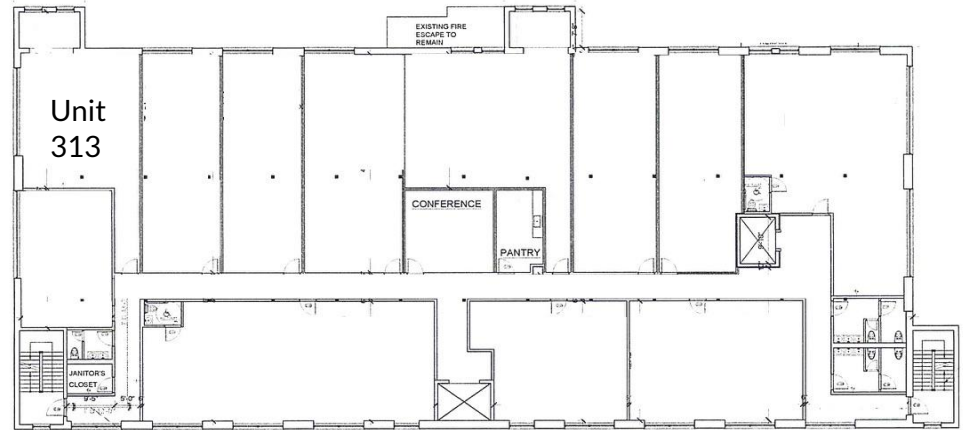
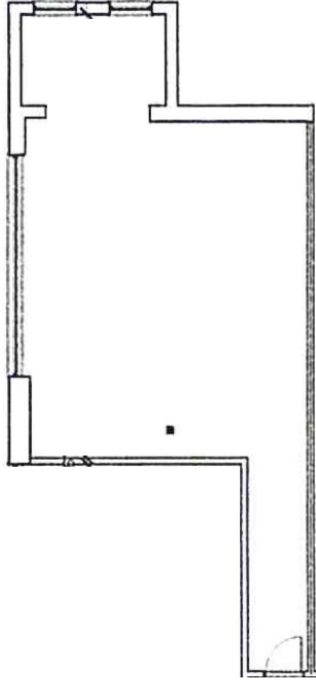
Unit 311



Unit 313

RSF: 1264

Monthly Rent: \$4200



Johnson Avenue

Unit 313

