

# 1901 REDONDO BUSINESS PARK

1901 REDONDO AVE | SIGNAL HILL, CA 90755



## PROPERTY HIGHLIGHTS

**Office Unit Available: ±900 SF at \$1.50/SF**

- Professionally Managed & Maintained Business Park
- Major Street Frontage
- Close Access to 405 Freeway & Pacific Coast Highway
- Low Common Area Maintenance Fee (\$.08/SF)
- Refurbishments Underway
- 3D Matterport Virtual Tour Available to View

For more information, please contact:

**MAX P. EDDY**

Associate

DRE#: 02163858

T: 562.354.2538

E: meddy@leelalb.com

**BRANDON CARRILLO**

Principal

DRE#: 01745362

T: 562.354.2510

E: bcarrillo@leelalb.com

**GARRETT MASSARO. SIOR**

Principal

DRE#: 01771471

T: 562.354.2516


E: gmassaro@leelalb.com

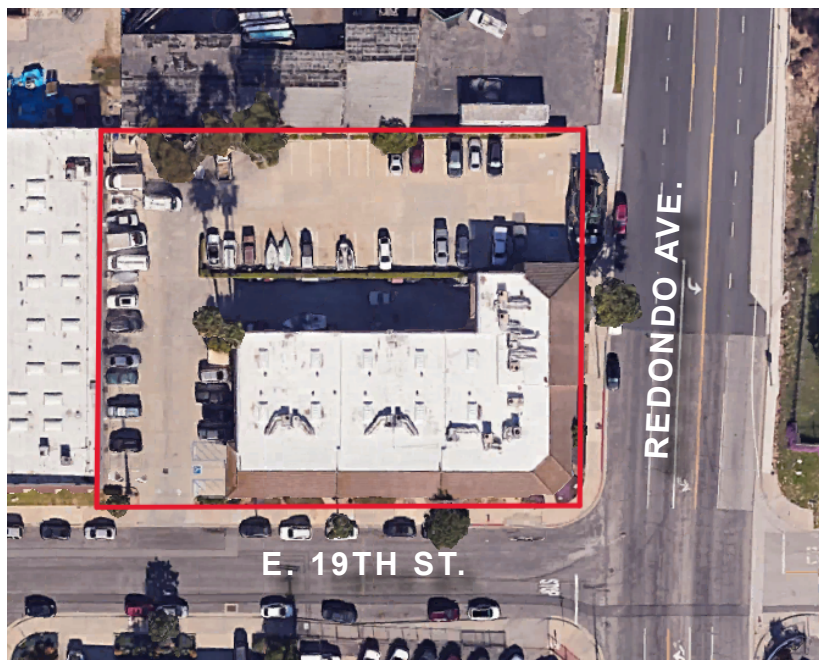
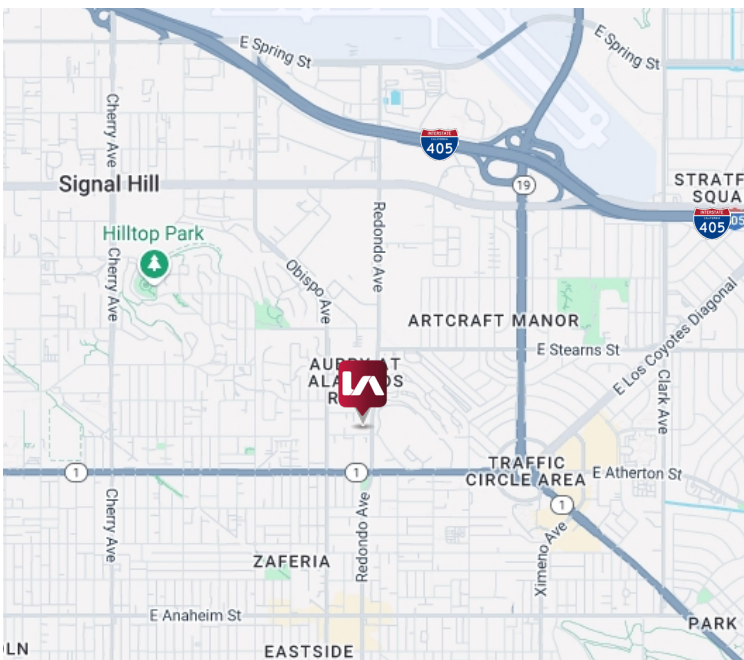


# 1901 REDONDO BUSINESS PARK

1901 REDONDO AVE | SIGNAL HILL, CA 90755

## AVAILABLE SUITES

SUITE	SQ FT	RATE	DESCRIPTION	3D TOUR
1905	±900 SF	\$1.50/SF + \$.08/SF CAM	Available Now. Downstairs Office, Street Frontage, 2 Private Offices, Open Area, 2 Restrooms	 <a href="#">Click to View!</a>

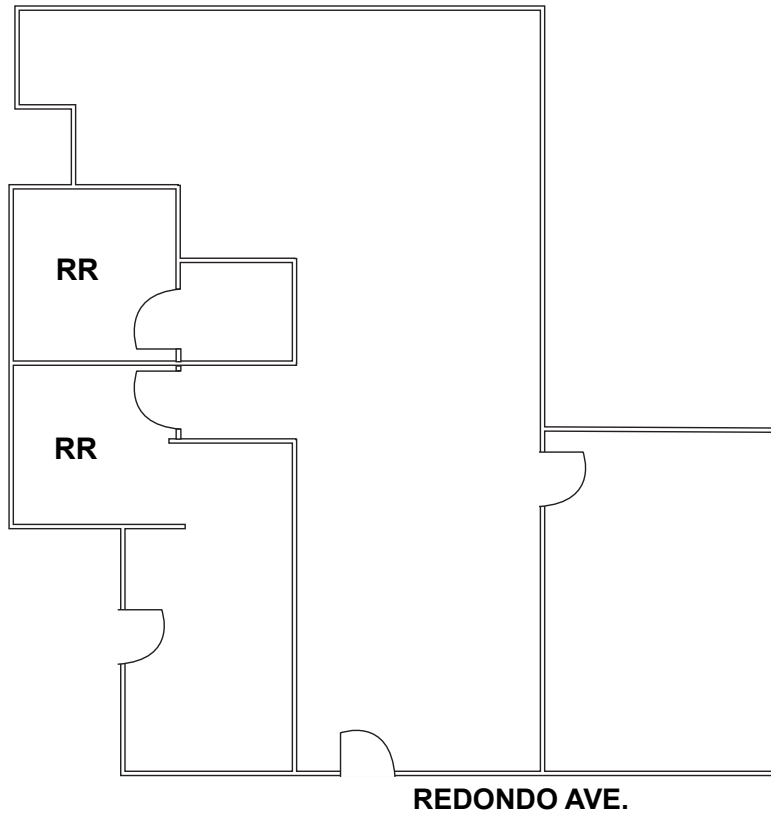


Copyright © Lee & Associates. All rights reserved. No part of this work may be reproduced or distributed without written permission of the copyright owner. The information contained in this report was gathered by Lee & Associates from sources believed to be reliable. Lee & Associates, however, makes no representation concerning the accuracy or completeness of such information and expressly disclaims any responsibility for any inaccuracy contained herein. 03.11.25

# 1901 REDONDO BUSINESS PARK

1901 REDONDO AVE | SIGNAL HILL, CA 90755

## SUITE 1905 REDONDO - FLOOR PLAN (NOT DRAWN TO SCALE)



Copyright © Lee & Associates. All rights reserved. No part of this work may be reproduced or distributed without written permission of the copyright owner. The information contained in this report was gathered by Lee & Associates from sources believed to be reliable. Lee & Associates, however, makes no representation concerning the accuracy or completeness of such information and expressly disclaims any responsibility for any inaccuracy contained herein. 03.11.25