

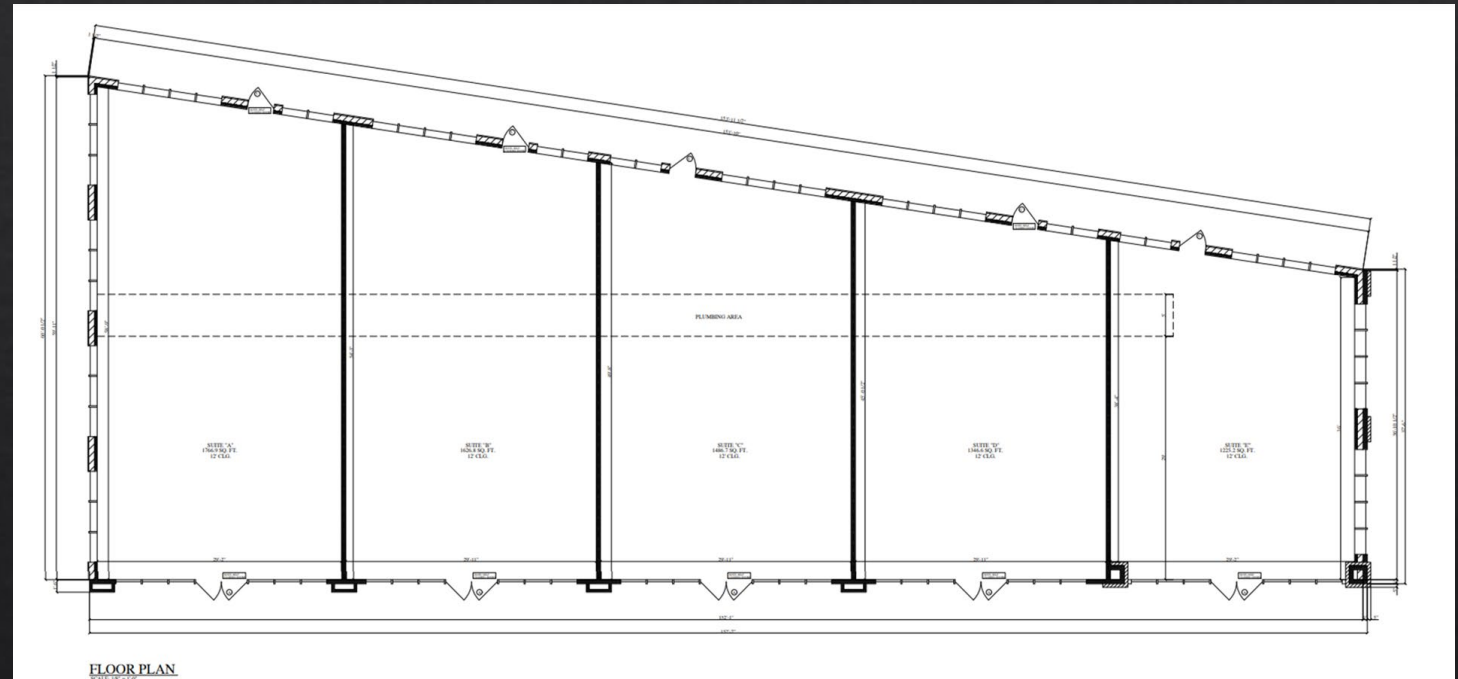


# NEXUS PLAZA

OLMITO , TEXAS

# NEXUS PLAZA

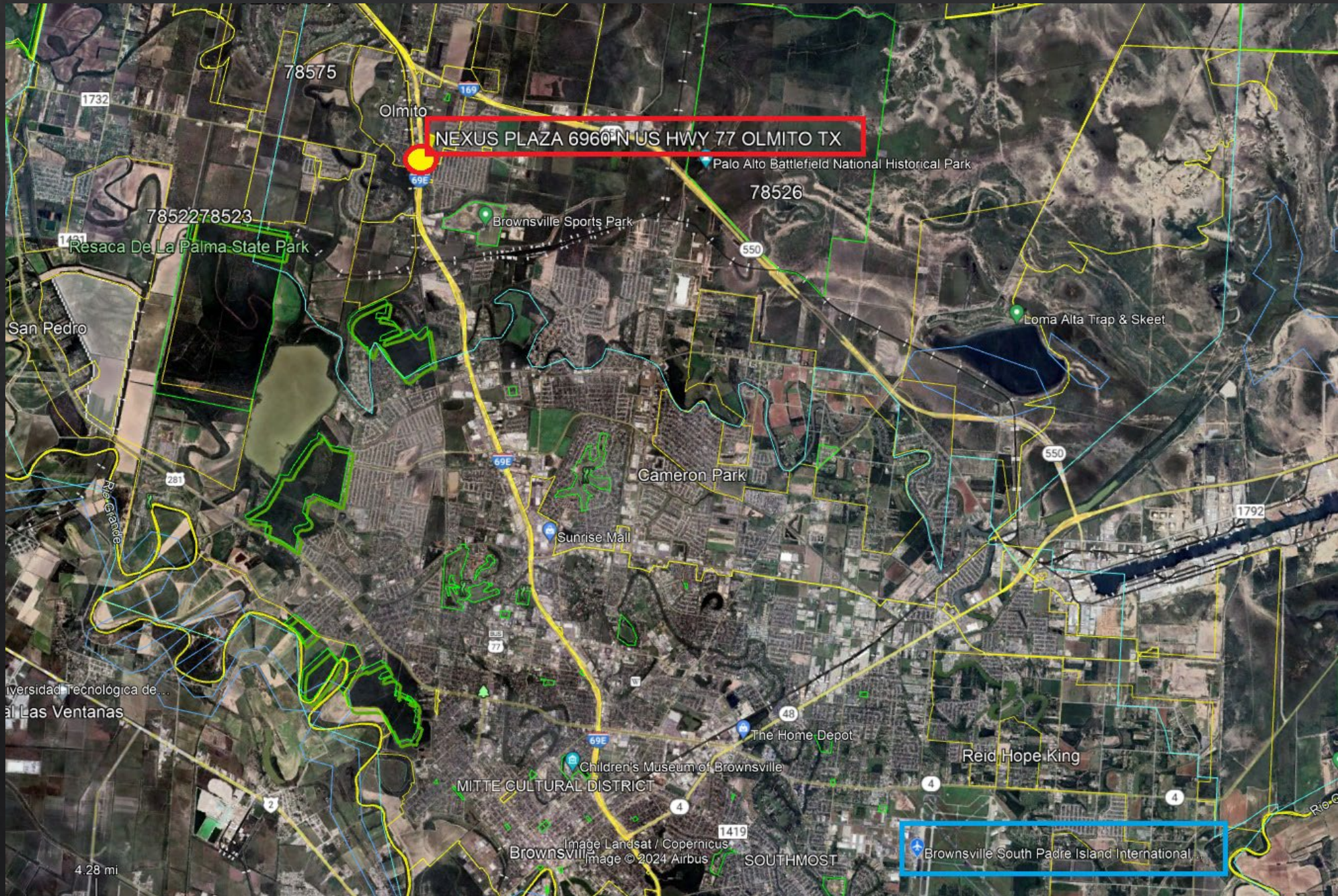
- ◆ LOT SIZE : 0.5 ACRES
- ◆ Total Leasable Space: 7,452 SQF
  - ◆ Unit 1: 1,765 sqf
  - ◆ Unit 2: 1,628 sqf
  - ◆ Unit 3: 1,487 sqf
  - ◆ Unit 4: 1,347 sqf
  - ◆ Unit 5: 1,225 sqf
- ◆ Units 1-5: 7,452 sqf











NEXUS PLAZA 6960 N US HWY 77 OLMITO TX

Brownsville South Padre Island International...

Olmito

78526

78522 78523

Cameron Park

Sunrise Mall

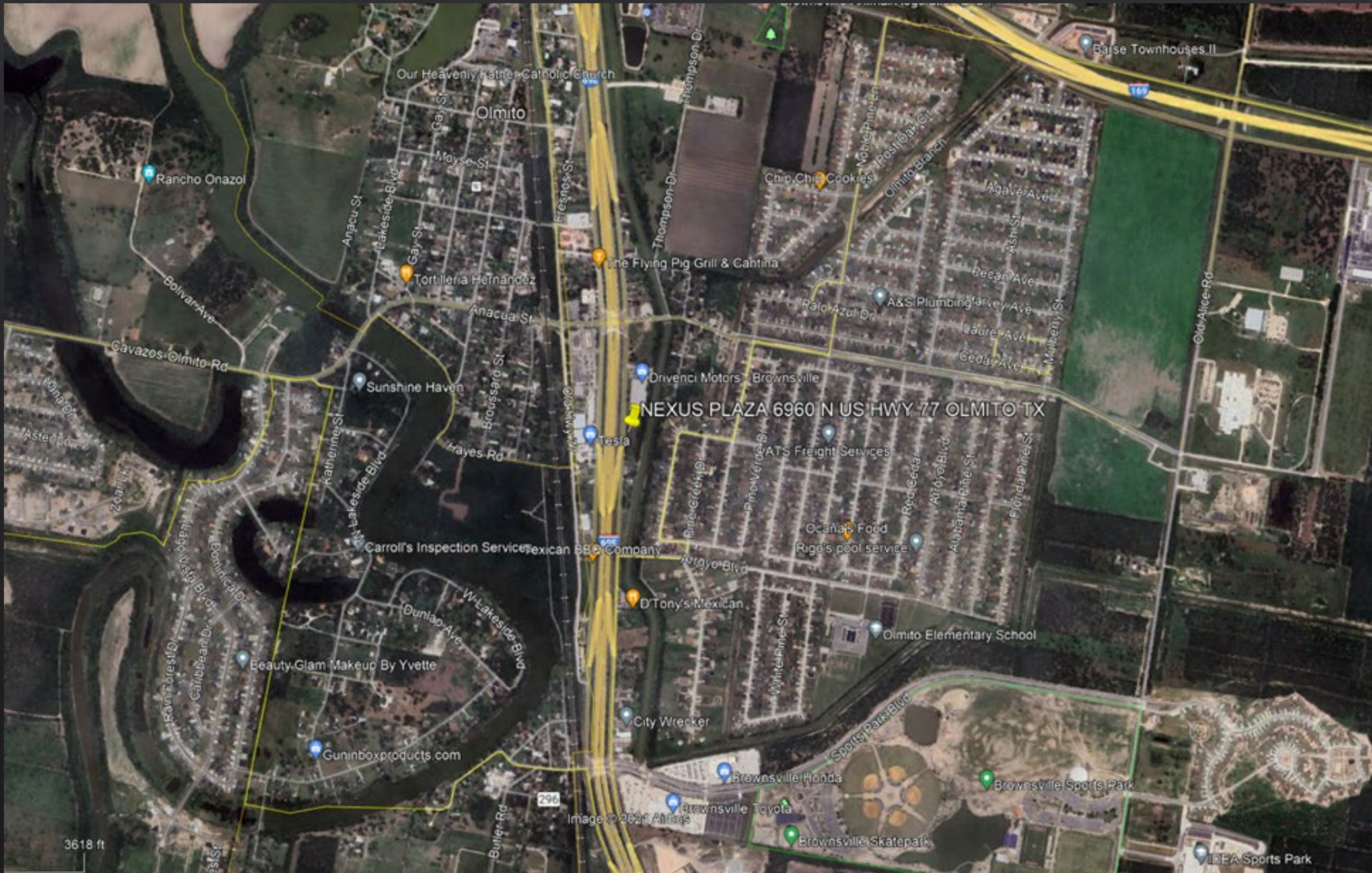
MITTE CULTURAL DISTRICT

Brownsville

SOUTHMOST

Reid Hope King

4.28 mi



Our Heavenly Father Catholic Church

Olmito

Rancho Onazol

Moyse St

Lakeside Blvd

Anacua St

Tortilleria Hernandez

The Flying Pig Grill & Cantina

Chip, Chip Cookies

Olmito Branch

Baise Townhouses II

Agave Ave

Ash St

Pecas Ave

Arvey Ave

Laure Ave

Geddy Ave

Old Alice Rd

Sunshine Haven

Drivenci Motors

Brownsville

NEXUS PLAZA 6960 N US HWY 77 OLMITO TX

Tesla

ATS Freight Services

Pine Verde Dr

Arroyo Blvd

Arroyo Blvd

Arroyo Blvd

Arroyo Blvd

Arroyo Blvd

Arroyo Blvd

Arroyo Blvd

Arroyo Blvd

Arroyo Blvd

Arroyo Blvd

Arroyo Blvd

Arroyo Blvd

Arroyo Blvd

Ocean's Food

Rigo's pool service

Red Cedar

Arroyo Blvd

Arroyo Blvd

Arroyo Blvd

Arroyo Blvd

Arroyo Blvd

Arroyo Blvd

Arroyo Blvd

Arroyo Blvd

Arroyo Blvd

Arroyo Blvd

Arroyo Blvd

Arroyo Blvd

Carroll's Inspection Services

Mexican BBQ Company

DTony's Mexican

Olmito Elementary School

Beauty Glam Makeup By Yvette

Guninboxproducts.com

City Wrecker

Brownsville Honda

Brownsville Toyota

Brownsville Skatepark

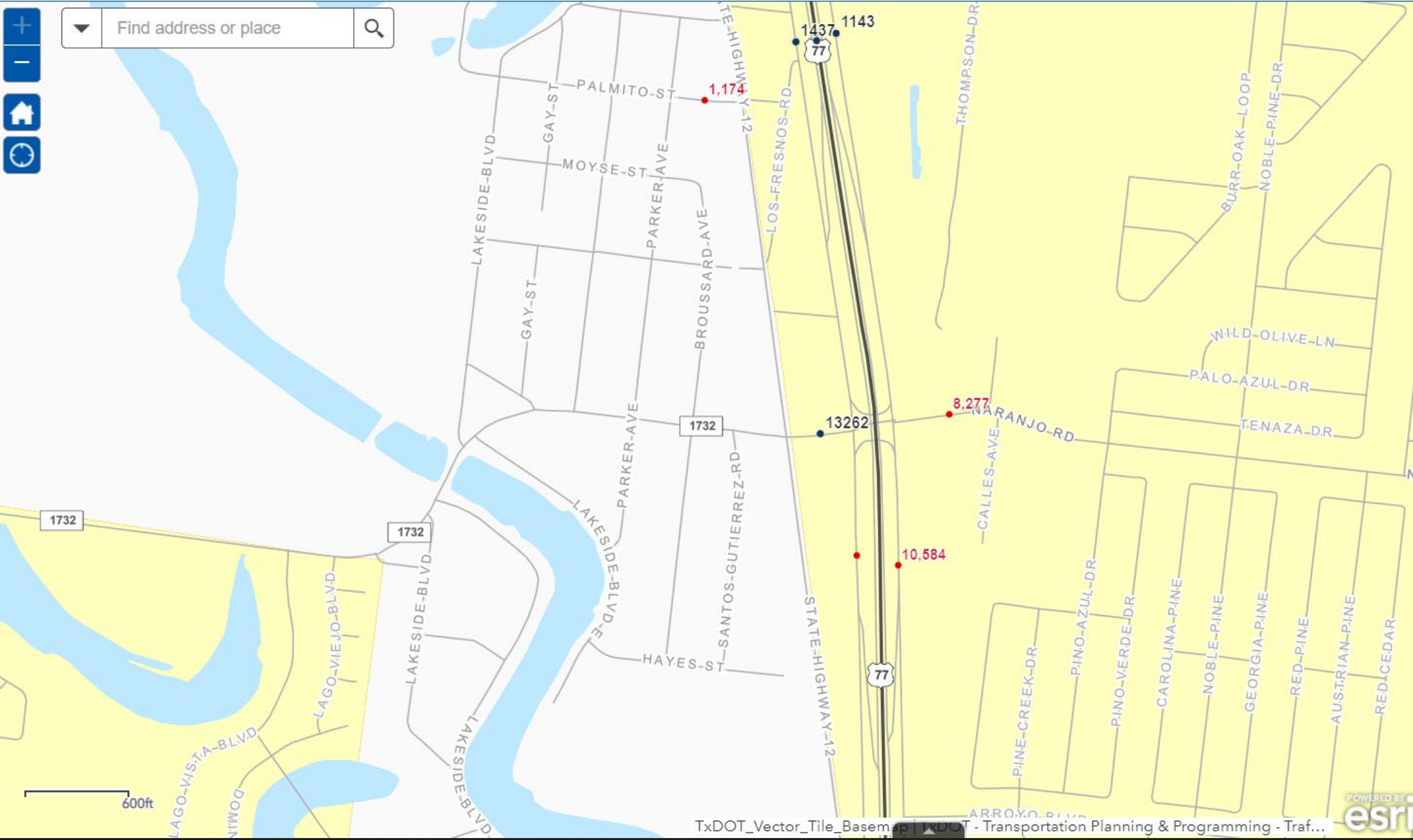
Brownsville Sports Park

IDEA Sports Park

3618 ft

296

Image © 2025 Airbus



600ft





# BROWNSVILLE//OLMITO TX



## Populations and People

Total Population

**186,738**

*PI | 2020 Decennial Census*



## Employment

Employment Rate

**54.9%**

*DP03 | 2022 American Community Survey 1-Year Estimates*



## Families and Living Arrangements

Total Households

**56,576**

*DP02 | 2022 American Community Survey 1-Year Estimates*



## Education

Bachelor's Degree or Higher

**22.5%**

*S1501 | 2022 American Community Survey 1-Year Estimates*



## Health

Without Health Care Coverage

**24.5%**

*S2701 | 2022 American Community Survey 1-Year Estimates*

## Households

# 56,576

Number of households

the Brownsville-Harlingen, TX Metro Area:  
137,982

Texas: 11,087,708

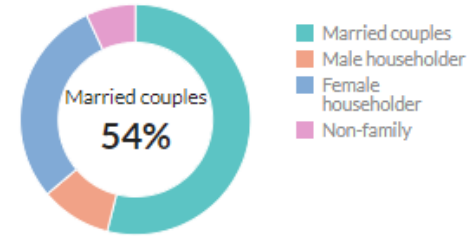
# 3.3

Persons per household

about 10 percent higher than the figure in the  
Brownsville-Harlingen, TX Metro Area: 3.1

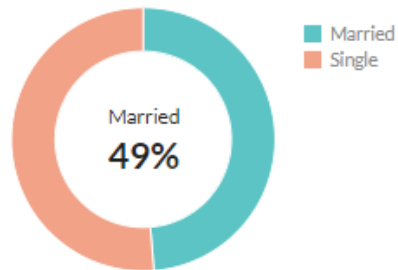
about 25 percent higher than the figure in Texas:  
2.7

## Population by household type



[Show data / Embed](#)

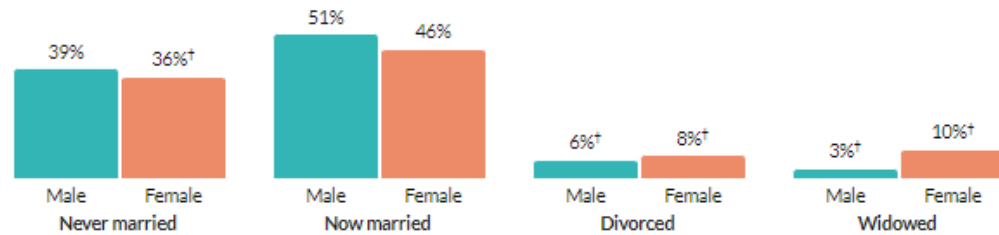
## Marital status



\* Universe: Population 15 years and over

[Show data / Embed](#)

## Marital status, by sex



[Show data / Embed](#)

## Fertility

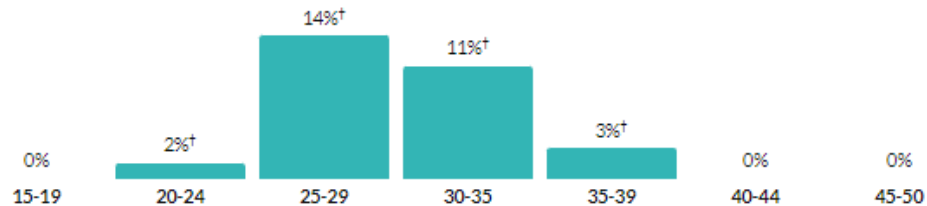
# 4.2%

Women 15-50 who gave birth during  
past year

about the same as the rate in the Brownsville-  
Harlingen, TX Metro Area: 4.2% †

about three-quarters of the rate in Texas: 5.7%

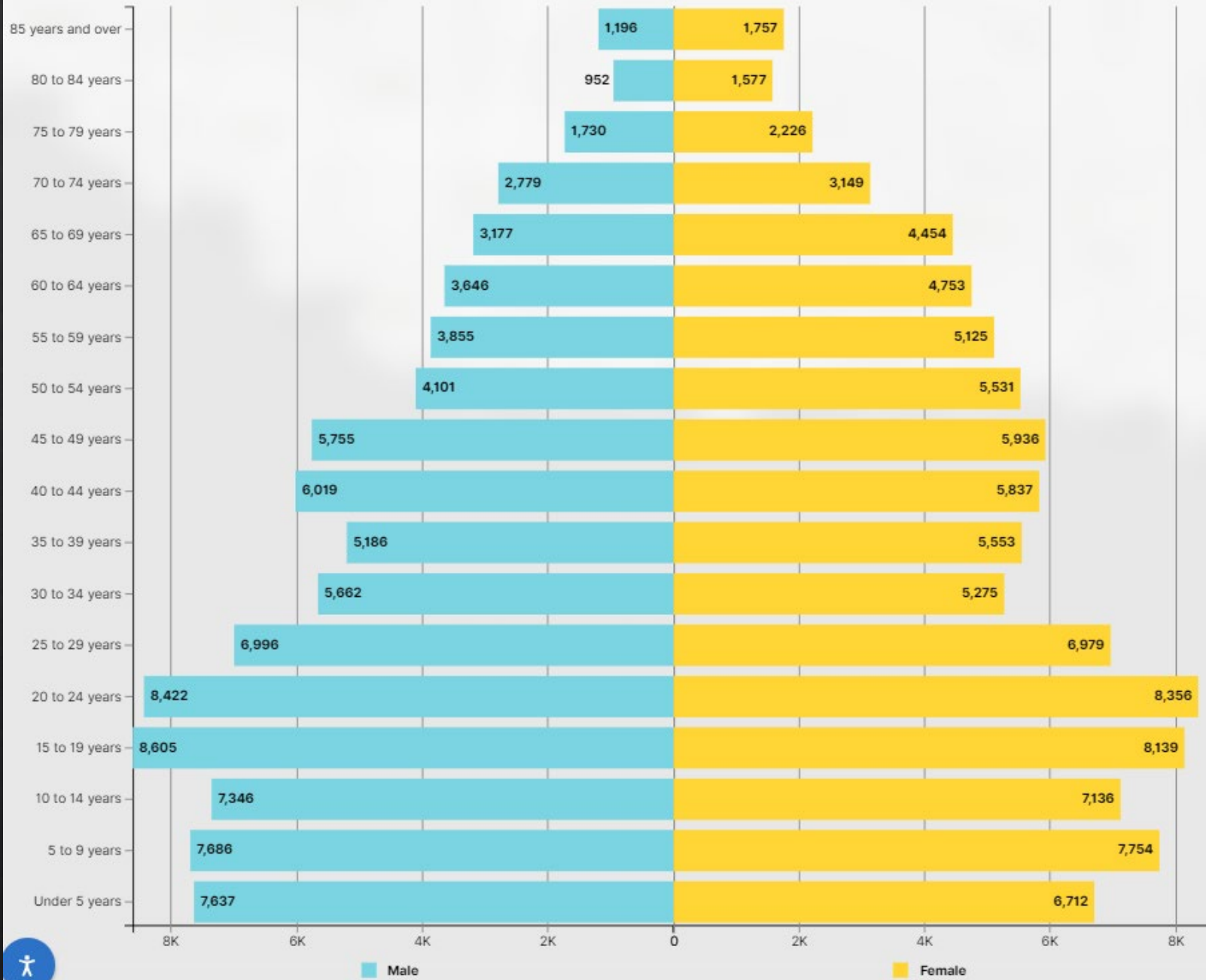
## Women who gave birth during past year, by age group



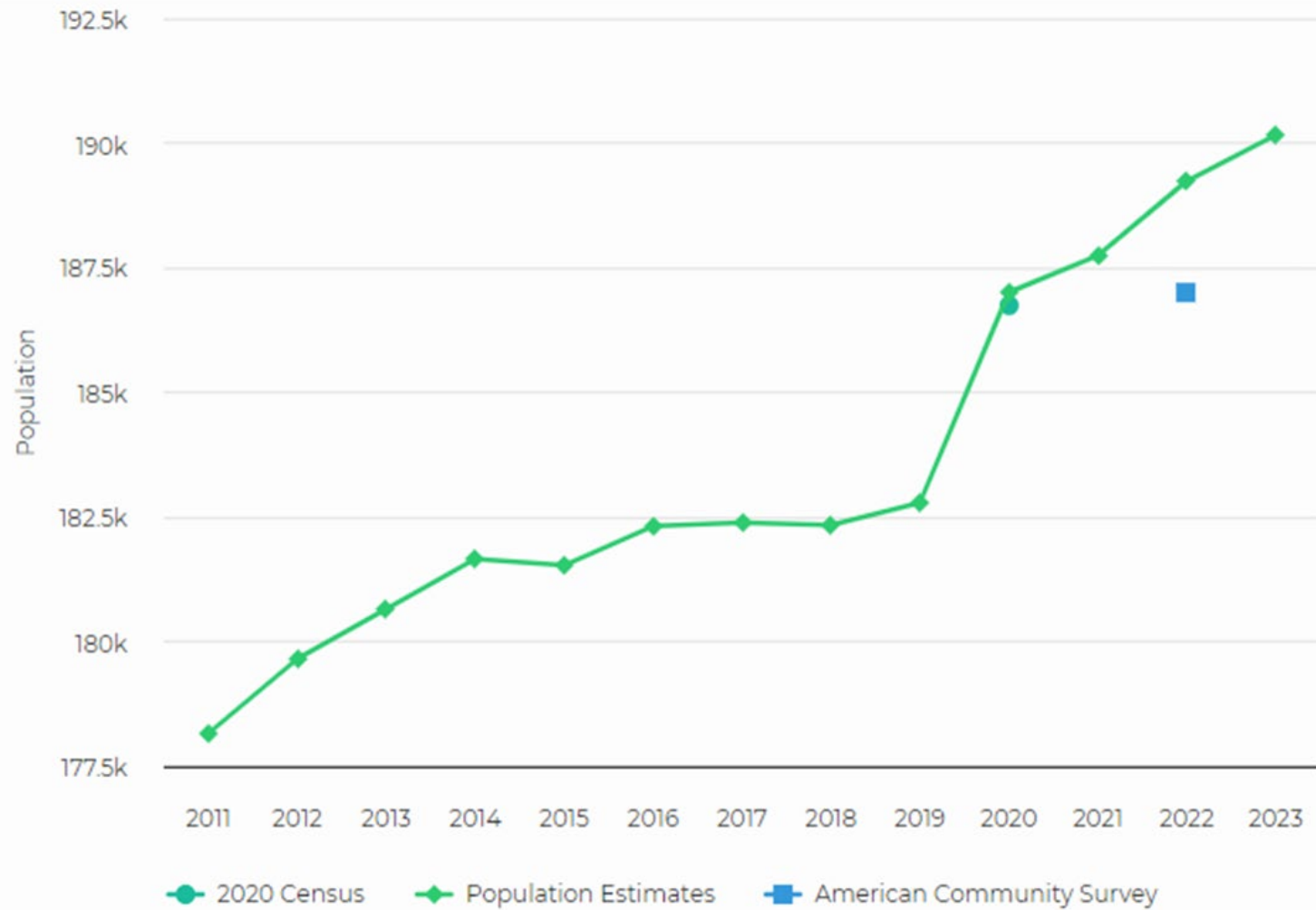
\* Universe: Women 15 to 50 years

[Show data / Embed](#)

### Brownsville city, Texas



# Brownsville Population Trends



Sources: United States Census Bureau. 2022 American Community Survey 5-Year Estimates. U.S. Census Bureau, American Community Survey Office. Web. 7 December 2023.

168,550 workers

