

FOR LEASE - OFFICE SPACE

550 DOYLE PARK DR., SANTA ROSA, CA



**TWO SMALL OFFICES AVAILABLE
ONLY \$500 PER MONTH
CALL TO ARRANGE A TOUR**



Paul Schwartz

Senior Associate, Commercial Real Estate

Cell: 707-479-1841

SchwartzBroker@gmail.com

CalBRE #01111744

corcoran

ICON PROPERTIES
COMMERCIAL

Building Features

**This is a newly renovated, two-story multi-tenant building
comprised of complimentary professional
human service practitioners.**

Two individual office suites available for \$500 per month each includes:

- Internet connectivity
- Kitchen/breakroom

In addition, tenant to pay approximately \$125 per month, per suite for operating expenses to include:

- All utilities (PG&E, water/sewer, garbage)
- Janitorial service
- Common area kitchen and restroom supplies
- Use of kitchen appliances

Floor Plan



Location and Parking

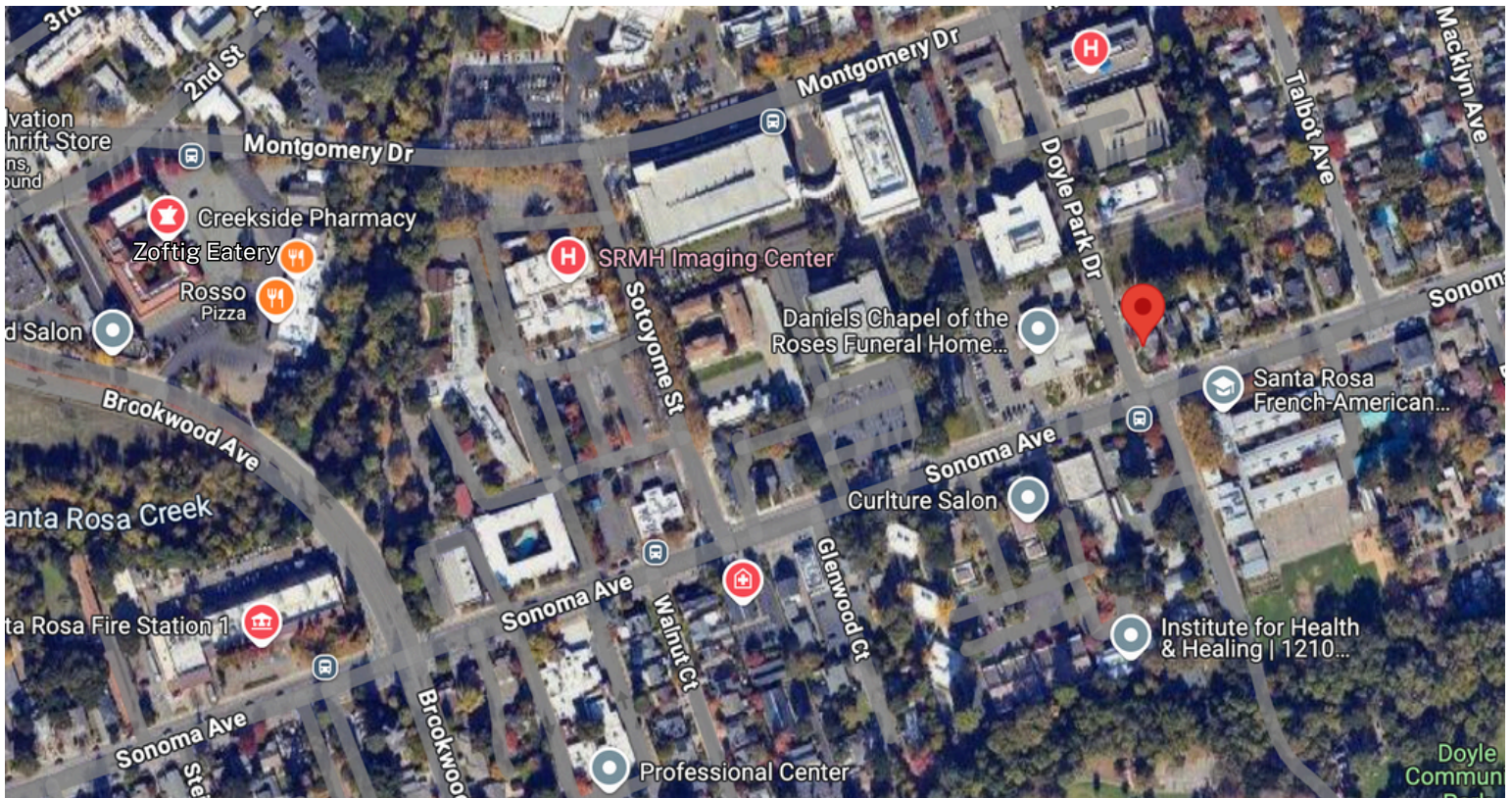
The building is in a convenient location at the corner of Sonoma Ave., and Doyle Park Dr. with easy access from all directions.

Midway between Downtown and Montgomery Village

There is extensive free street parking at the building



Area Street Map



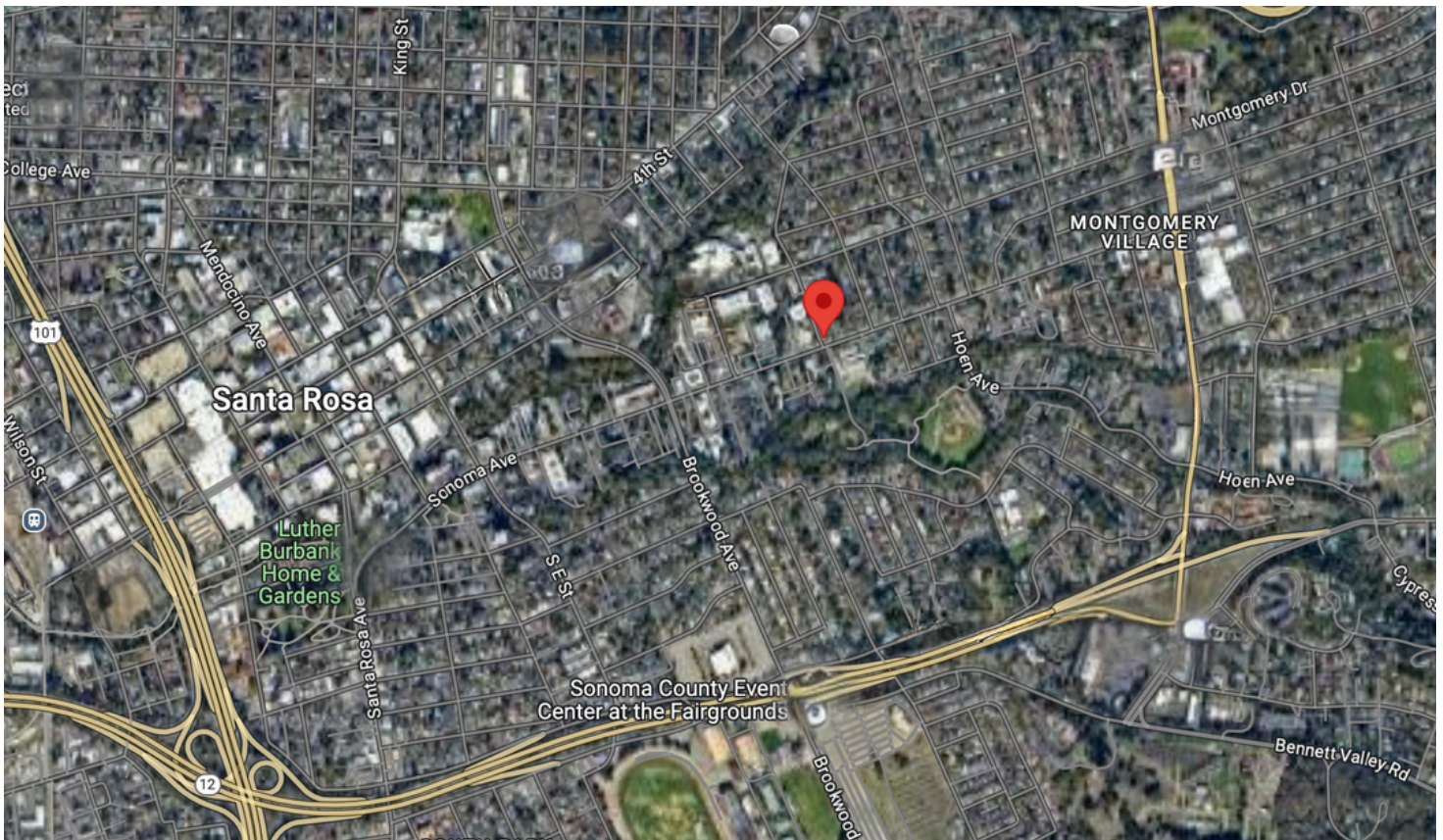
corcoran

www.CorcoranIcon.com

ICON PROPERTIES
COMMERCIAL

2416 Sonoma Avenue
Santa Rosa, CA 95405

Aerial Map



Santa Rosa/Sonoma County

Santa Rosa is the County Government seat and largest business and economic center between San Francisco and Portland, OR. This beautiful mid-sized city has a population of approximately 176,000 and is the governmental, financial, medical, and retail center of Sonoma County. Santa Rosa is located 45 miles north of the Golden Gate Bridge in the world class Sonoma County Wine Country.

Sonoma County has a population of approximately 500,000 and is known for its incredible natural beauty, technology base and bioscience firms, diverse landscape, world-class foods and beverages including approximately 250 wineries and 25 craft beer breweries, 16 American Viticultural Areas (AVA's) nestled between the Mayacamas Mountains and the gorgeous Pacific Coast/Bodega Bay to the Russian River and Sonoma Valley. Employment and innovation leaders include Medtronic, Keysight (formerly Agilent), Viavi, Tri Vascular Medical Devices, American Ag Credit, Kaiser Hospital, St. Joseph Health, and Sutter Health.

A Mediterranean climate with exceptional air quality and four distinct seasons, the weather in Sonoma County is ideal. Sonoma County is bordered to the south by Marin County, to the east by Napa County and to the north by Mendocino County. There is immediate access to San Francisco and the entire Bay Area, and is a commercial hub of the North Bay.

Sonoma County is the home to a burgeoning craft beer industry led by world- renowned breweries including Lagunitas Brewing Co., Russian River Brewing Co., Fogbeltd Brewing Co. and Bear Republic Brewing Co. The annual release in Downtown Santa Rosa of Russian River Brewing Company's 'Pliny the Younger' draws thousands of beer aficionados from around the world for two weeks each February and is ranked among the world's top craft beers. The economic impact of the craft brewing industry in Sonoma County is estimated to be over \$125,000,000.

Links:

Santa Rosa Chamber of Commerce — www.santarosametrochamber.com

Sonoma County Economic Development Board — www.sonomaedb.org

City of Santa Rosa — www.srcity.org

Press Democrat Newspaper — www.PressDemocrat.com

North Bay Business Journal — www.NBBJ.com

The above information, while not guaranteed, has been secured from sources we believe to be reliable. Submitted subject to error, change or withdrawal. An interested party should verify the status of the property and the information herein.

©2020 Corcoran Group LLC. All rights reserved. Corcoran® and the Corcoran Logo are registered service marks owned by Corcoran Group LLC. Corcoran Group LLC fully supports the principles of the Fair Housing Act and the Equal Opportunity Act. Each franchise is independently owned and operated.

corcoran

ICON PROPERTIES
COMMERCIAL

www.CorcoranIcon.com

2416 Sonoma Avenue
Santa Rosa, CA 95405