

# KIFER COMMERCE PARK

1292 KIFER ROAD, SUITE 807, SUNNYVALE, CA 94086



## HIGHLIGHTS

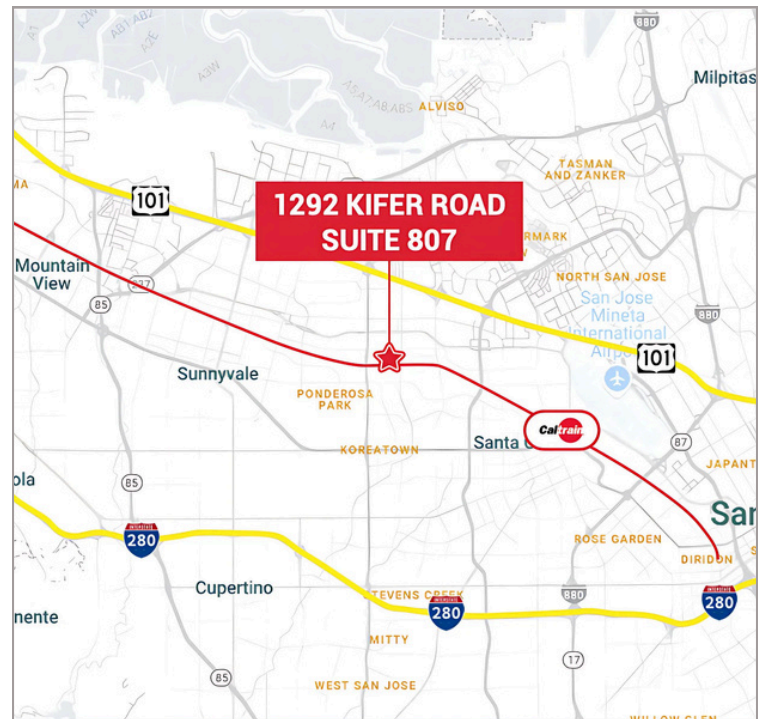
- Built in 2005
- Industrial Condo - 50% Office & 50% Warehouse
- Interior Restroom & Kitchenette
- 1 Grade Level Door with 21' Clear Height
- Convenient access to Lawrence Expy, San Tomas Expy, Highway 101, and Interstate 280
- Call to Tour

## AVAILABLE

- ±3,600 RSF

## LEASE RATE

- \$2.50/RSF NNN



260 Los Gatos-Saratoga Rd., Los Gatos, CA 95030  
Lic. 01902032 | 408.217.6000  
[www.healthmedrealty.com](http://www.healthmedrealty.com)

No warranty or representation, express or implied is made as to the accuracy of the information contained herein, and the same is submitted subject to errors, omissions, changes of price, rental or other conditions, withdrawal without notice.

For Further Information, Please Contact:

**Eric Rafia**

☎ 408-457-8808  
✉ [eric@healthmedrealty.com](mailto:eric@healthmedrealty.com)  
📄 Lic. 01383075

**Eric Yeung**

☎ 408-457-8806  
✉ [eric@healthmedrealty.com](mailto:eric@healthmedrealty.com)  
📄 Lic. 01937705

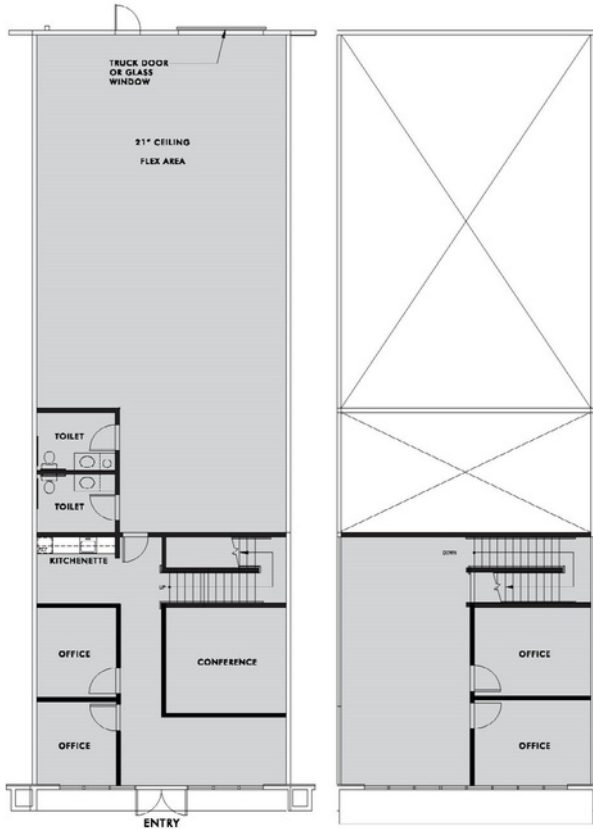


# KIFER COMMERCE PARK

1292 KIFER ROAD, SUITE 807, SUNNYVALE, CA 94086

## SUITE 807

±3,600 RSF



1ST FLOOR

2ND FLOOR



Drawings not to scale



**HealthMedRealty**

260 Los Gatos-Saratoga Rd., Los Gatos, CA 95030

Lic. 01902032 | 408.217.6000

[www.healthmedrealty.com](http://www.healthmedrealty.com)

No warranty or representation, express or implied is made as to the accuracy of the information contained herein, and the same is submitted subject to errors, omissions, changes of price, rental or other conditions, withdrawal without notice.

**For Further Information, Please Contact:**

**Eric Rafia**

☎ 408-457-8808

✉ [eric@healthmedrealty.com](mailto:eric@healthmedrealty.com)

📠 Lic. 01383075

**Eric Yeung**

☎ 408-457-8806

✉ [eric@healthmedrealty.com](mailto:eric@healthmedrealty.com)

📠 Lic. 01937705

