

FOR SALE - PACIFIC OFFICE PLAZA

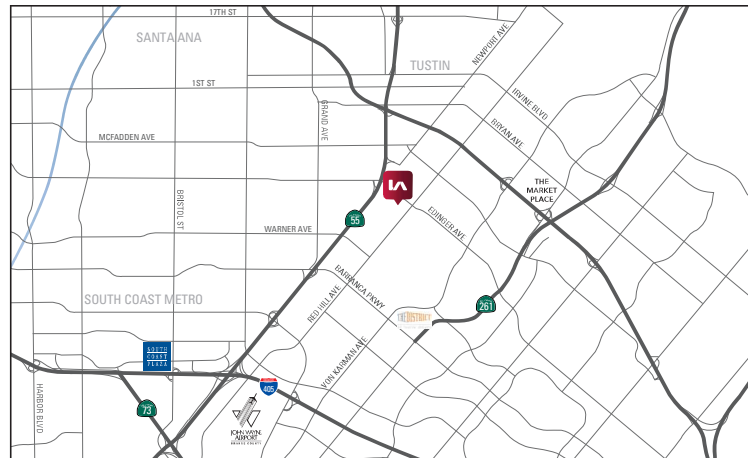
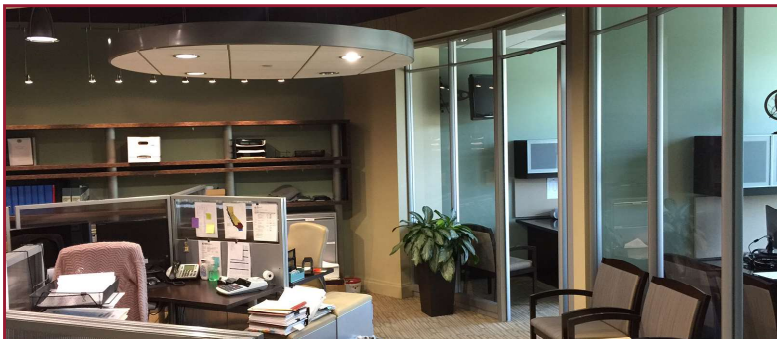
1422 EDINGER AVENUE . SUITE 230 . TUSTIN . CA

±3,985 SQ. FT.



PROPERTY FEATURES

- » ±3,985 SF creative office space for sale
- » Exposed ceilings throughout work areas
- » High end interior improvements
- » Upgraded lighting, doors and other above standard improvements
- » Private offices with glass walls and wood paneling
- » Team work areas
- » Conference room
- » Kitchen area
- » Excellent views
- » Free surface parking
- » Close proximity to retail, the district and other amenities
- » Convenient freeway access



CONTACT ME

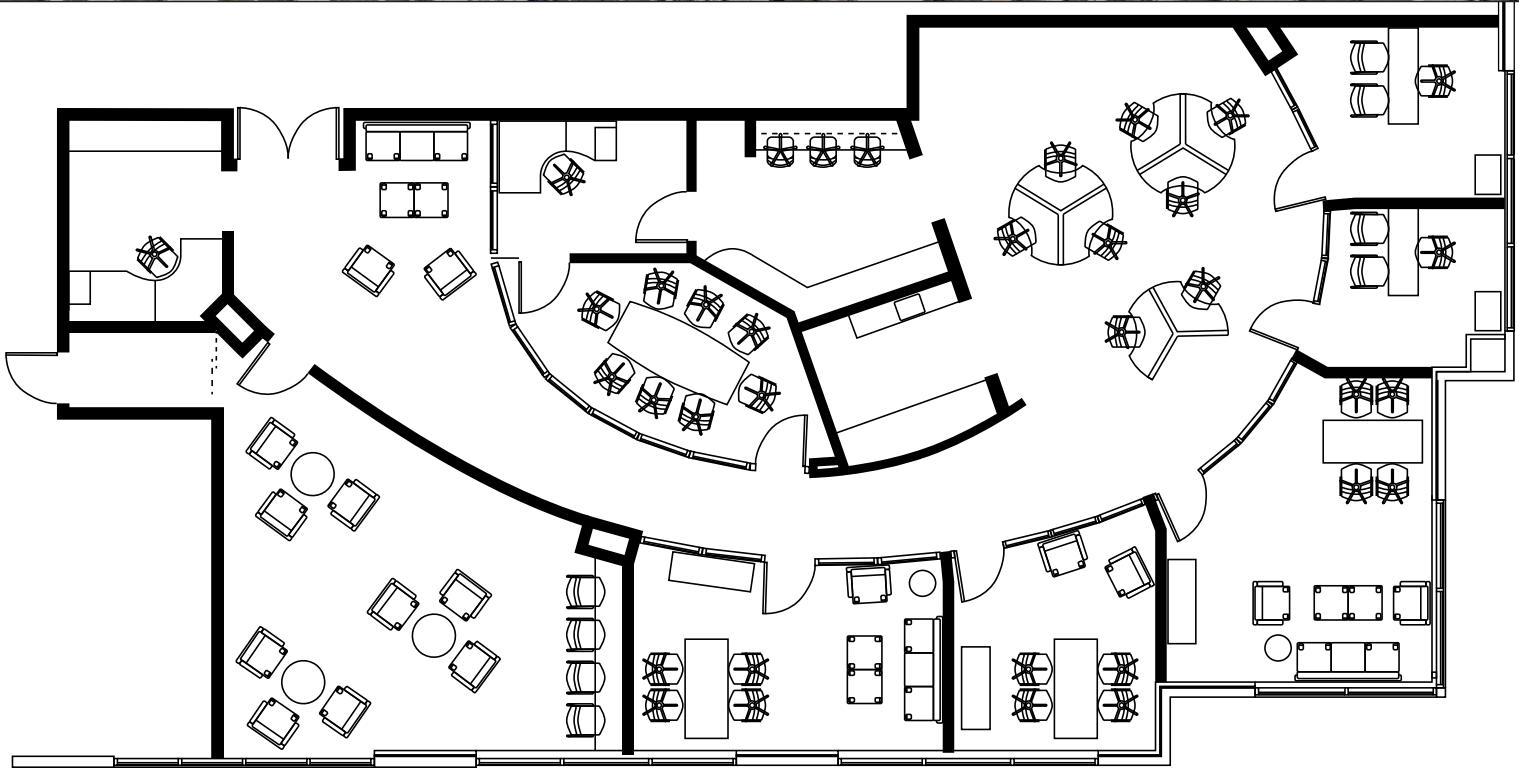
DAVID BOLT
949.231.8309
dbolt@lee-associates.com
DRE #: 01840863

LEE & ASSOCIATES
COMMERCIAL REAL ESTATE SERVICES
NEWPORT BEACH

FOR SALE - PACIFIC OFFICE PLAZA

1422 EDINGER AVENUE . SUITE 230 . TUSTIN . CA

±3,985 SQ. FT.



CONTACT ME

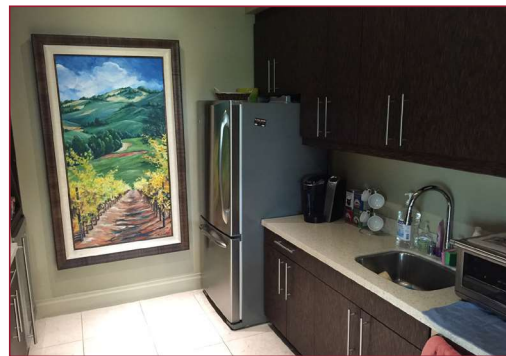
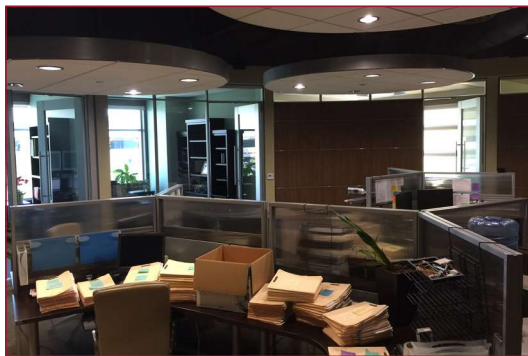
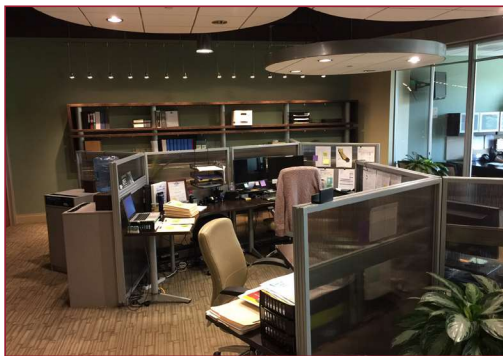
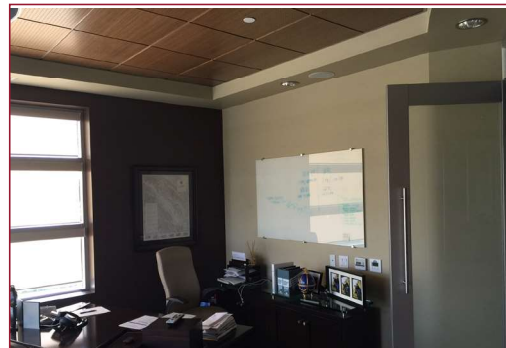
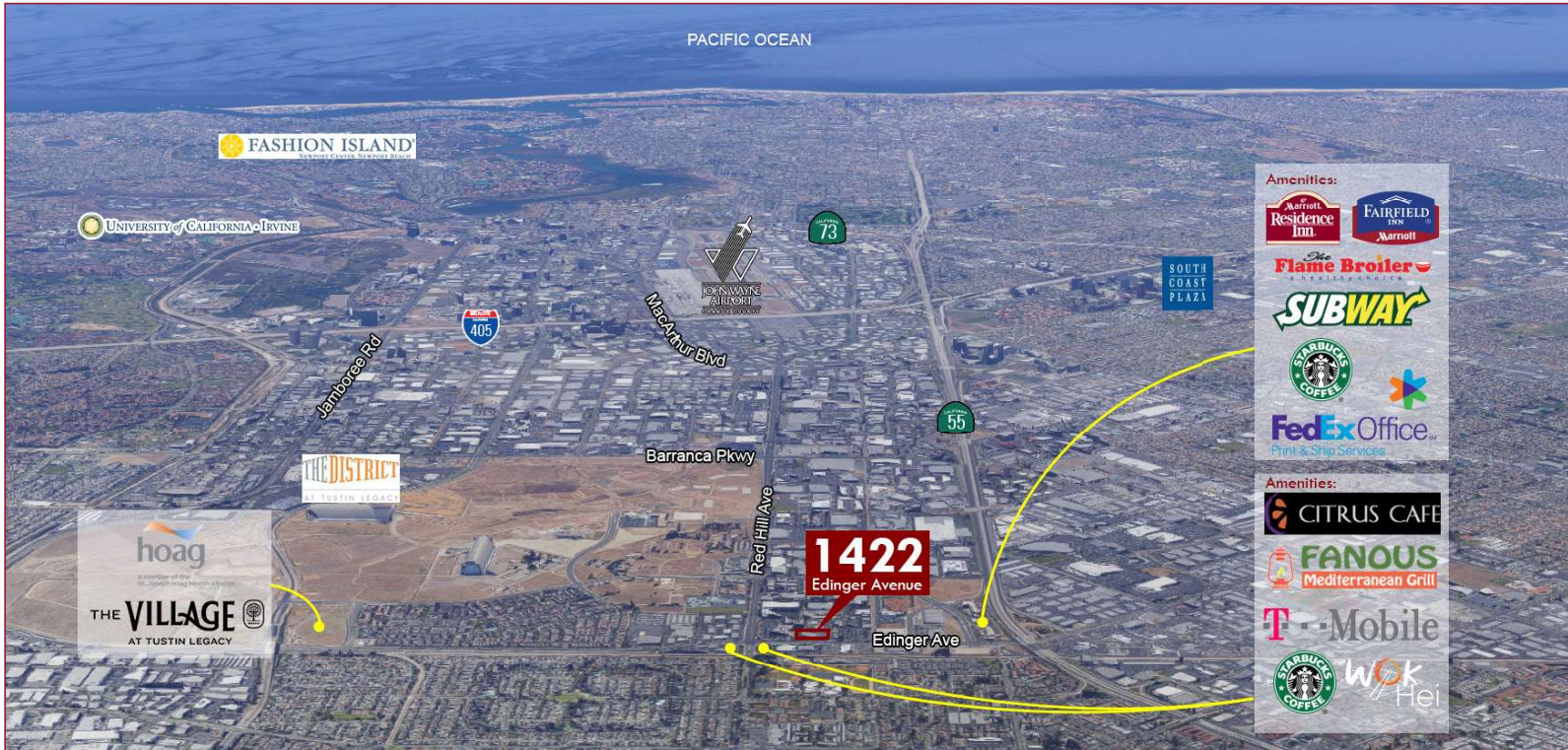
DAVID BOLT
949.231.8309
dbolt@lee-associates.com
DRE #: 01840863



FOR SALE - PACIFIC OFFICE PLAZA

1422 EDINGER AVENUE . SUITE 230 . TUSTIN . CA

±3,985 SQ. FT.



CONTACT ME

DAVID BOLT
949.231.8309
dbolt@lee-associates.com
DRE #: 01840863

LEE & ASSOCIATES
COMMERCIAL REAL ESTATE SERVICES
NEWPORT BEACH