

Walmart Outlots

1.54–2.45 Acres

Property Information

- + Available Outlots:
 - Lot 2: ±2.45 Acres
 - Lot 3: ±1.54 Acres
- + Zoning: General Business (C-2)
- + Walmart averages 1.1 million visitors per year and is the main national retailer within the community.
- + Uses: Retail, Office & Restaurant

2200 N State Street
Iola, KS 66749
Store #1187



Contact Us

Matt Rau
Senior Associate
+1 816 968 5831
matt.rau@cbre.com

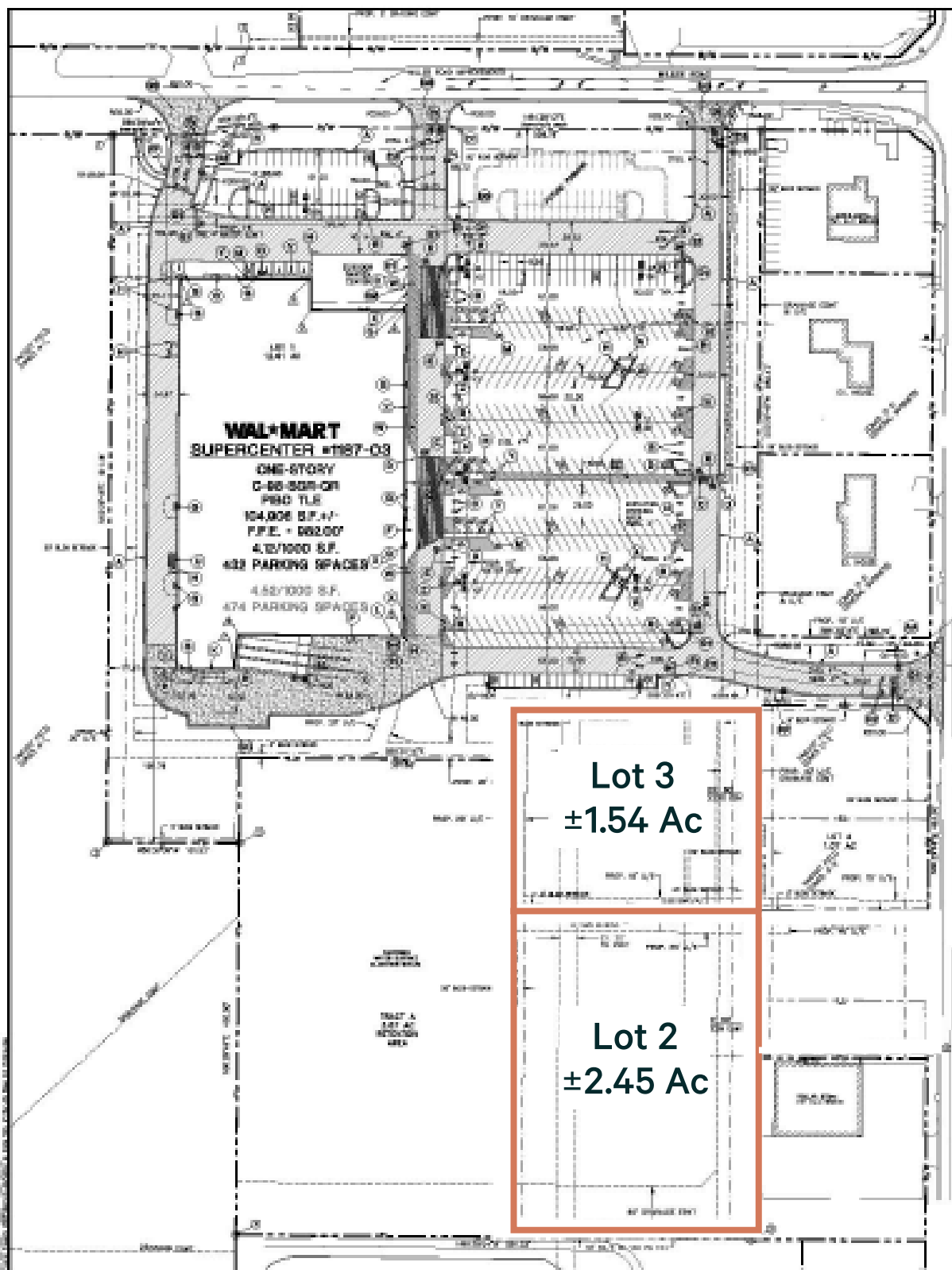
Jim Sakanich
Senior Vice President
+1 312 608 3254
jim.sakanich@cbre.com

Thomas Flynn
Senior Vice President
+1 330 328 4334
thomas.flynn@cbre.com

Yoni Zvi
Senior Vice President
+1 414 708 1818
yoni.zvi@cbre.com

CBRE, Inc. | Kansas City
4520 Main Street, Suite 600
Kansas City, MO 64111
+1 816 756 3535
Licensed Real Estate Broker

Site Plan



Walmart Outlots | 1.54–2.45 Acres

2200 N State Street | Iola, KS 66749 | Store #1187

Available

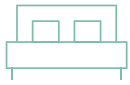
Area Overview

The Iola area and Allen County is primarily rural with deep roots in agriculture. Iola is the County Seat of Allen County. Its centralized location within southeast Kansas makes Iola an ideal place to live, work, and play.



Businesses (5 Mi)

387



Hotels (3 Mi)

- 3 Hotels
- 161 Rooms



Employees (5 Mi)

4,002



Major Employers

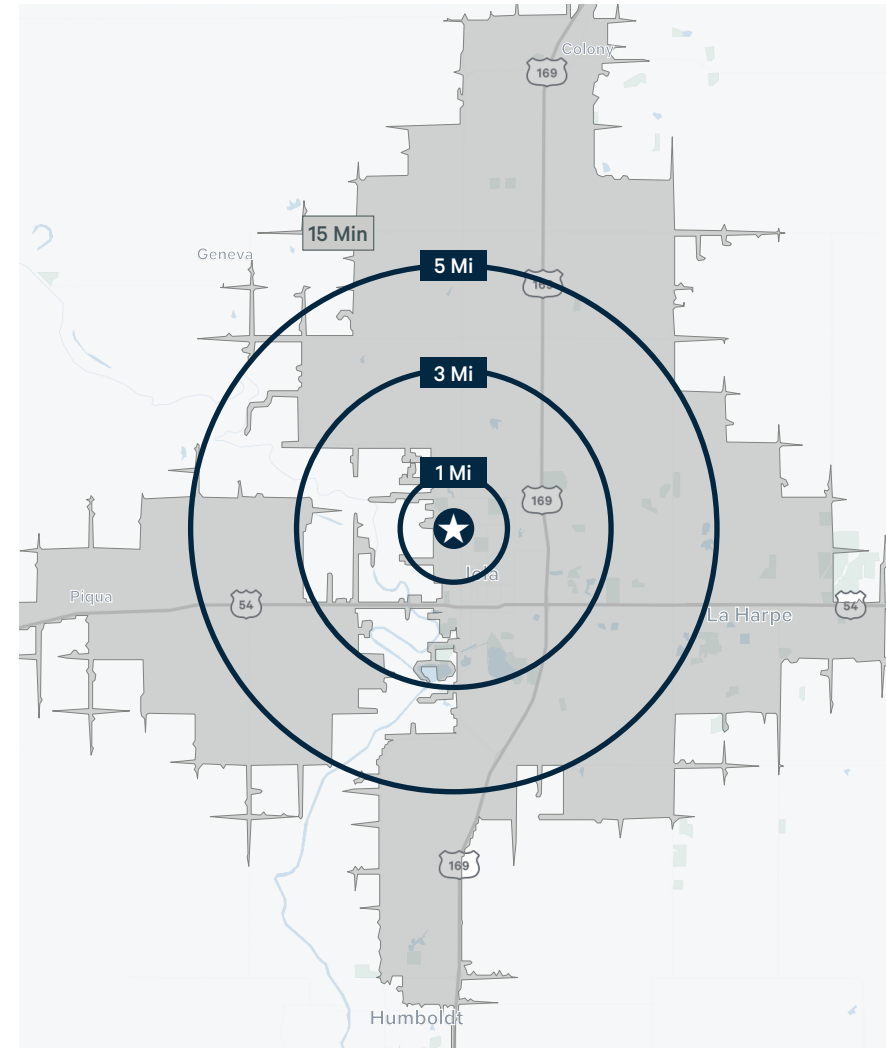
- Gates Corp
- Russell Stover's Candies
- Columbia Metal Products



Traffic Generators

- Allen County Regional Hospital
- Allen Community College
- Walmart

2023 Estimates	Total Population	Daytime Population	Total Households	Median HH Income	Median Age
1 Mile	1,431	2,364	517	\$48,128	34.4
3 Miles	5,908	7,643	2,527	\$50,811	37.8
5 Miles	7,125	8,412	3,027	\$53,064	39.1
5 Minutes	4,024	5,819	1,648	\$47,237	37.3
10 Minutes	6,420	7,985	2,735	\$51,713	38.4
15 Minutes	8,892	10,219	3,772	\$53,904	40.5





© 2023 CBRE, Inc. All rights reserved. This information has been obtained from sources believed reliable, but has not been verified for accuracy or completeness. You should conduct a careful, independent investigation of the property and verify all information. Any reliance on this information is solely at your own risk. CBRE and the CBRE logo are service marks of CBRE, Inc. All other marks displayed on this document are the property of their respective owners, and the use of such logos does not imply any affiliation with or endorsement of CBRE. Photos herein are the property of their respective owners. Use of these images without the express written consent of the owner is prohibited. Modified: August 2023