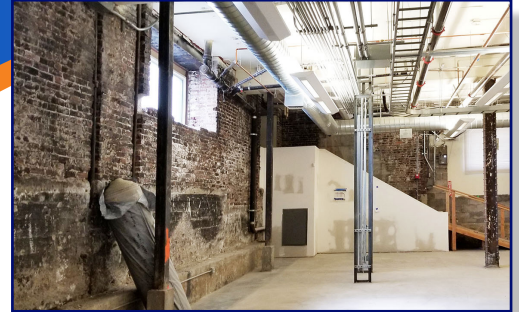
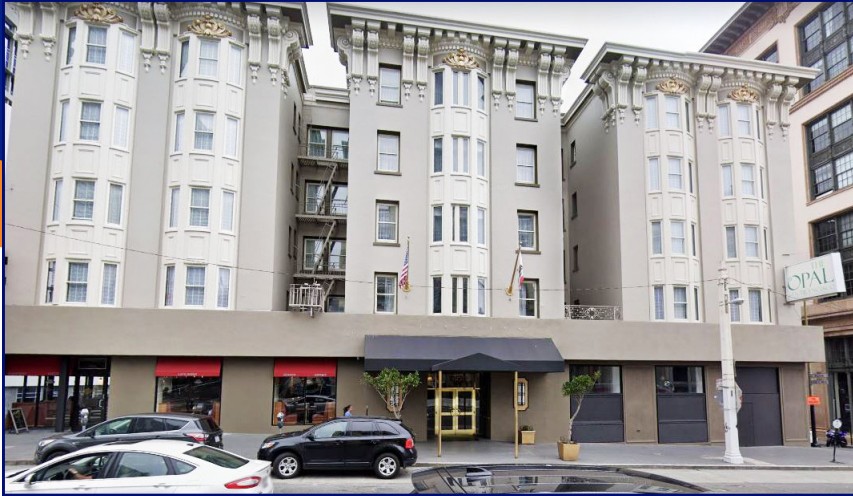


FOR LEASE Office/Medical

1050 Van Ness at Geary San Francisco, California

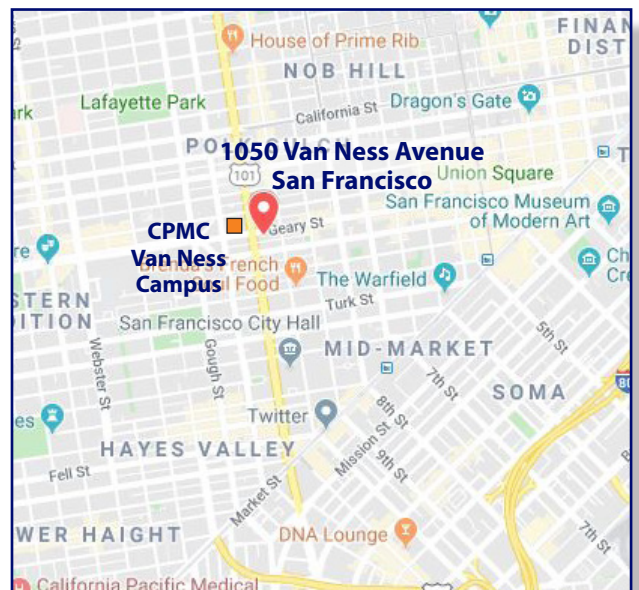


BUILDING

- Approximately 11,890 sf high-ceiling, single-tenant basement space across street from new CPMC \$2 billion hospital
- Opportunity for office or medical office user needing true ground floor on slab
- Currently open build-out with restroom core included
- Landlord to install lift at separate entry on Geary Street
- Blade signage available at entry door
- Substantial natural light
- Asking Rent: \$3.50 psf NNN per month.
Property taxes estimated to be \$0.23 psf per month
Utilities to be metered and paid directly by tenant

LOCATION

- Central San Francisco location — Van Ness Corridor
- At intersection of Van Ness and Geary, across the street from CPMC Van Ness Campus
- Major MUNI connecting point, with north/south and east/west express buses converging
- New Bus Rapid Transit (BRT) lane being created on Van Ness for express bus service

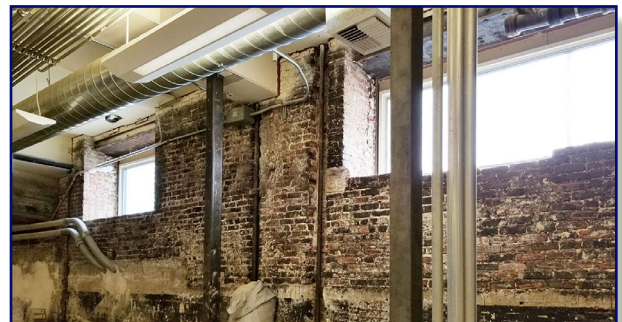
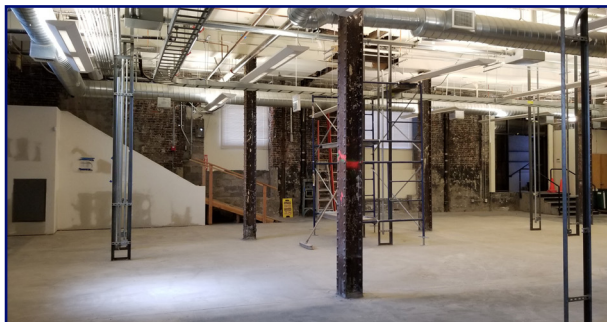
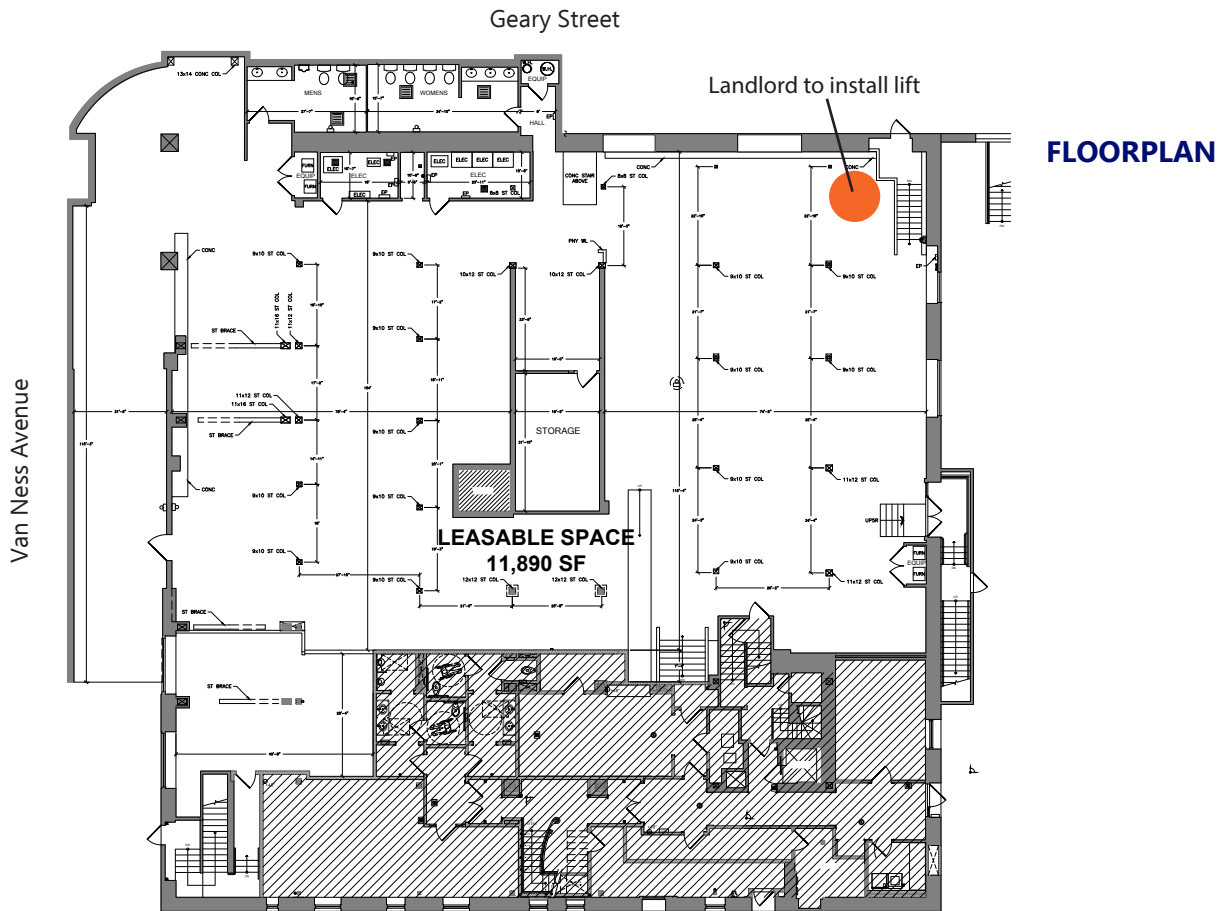


Bayside Realty Partners
1761 Laurel Street
San Carlos, CA 94070
www.baysiderp.com
CA Broker# 00868528

Trask Leonard
(650) 949-0700
tleonard@baysiderp.com
BRE# 01152101

Caroline Doyle
(650) 722-1495
cdoyle@baysiderp.com
BRE# 01906397

**For More
Information
Contact
Bayside
Realty
Partners**



Bayside Realty Partners
1761 Laurel Street
San Carlos, CA 94070
www.baysiderp.com
CA Broker# 00868528

Trask Leonard
(650) 949-0700
tleonard@baysiderp.com
BRE# 01152101

Caroline Doyle
(650) 722-1495
cdoyle@baysiderp.com
BRE# 01906397

**For More
Information
Contact
Bayside
Realty
Partners**