

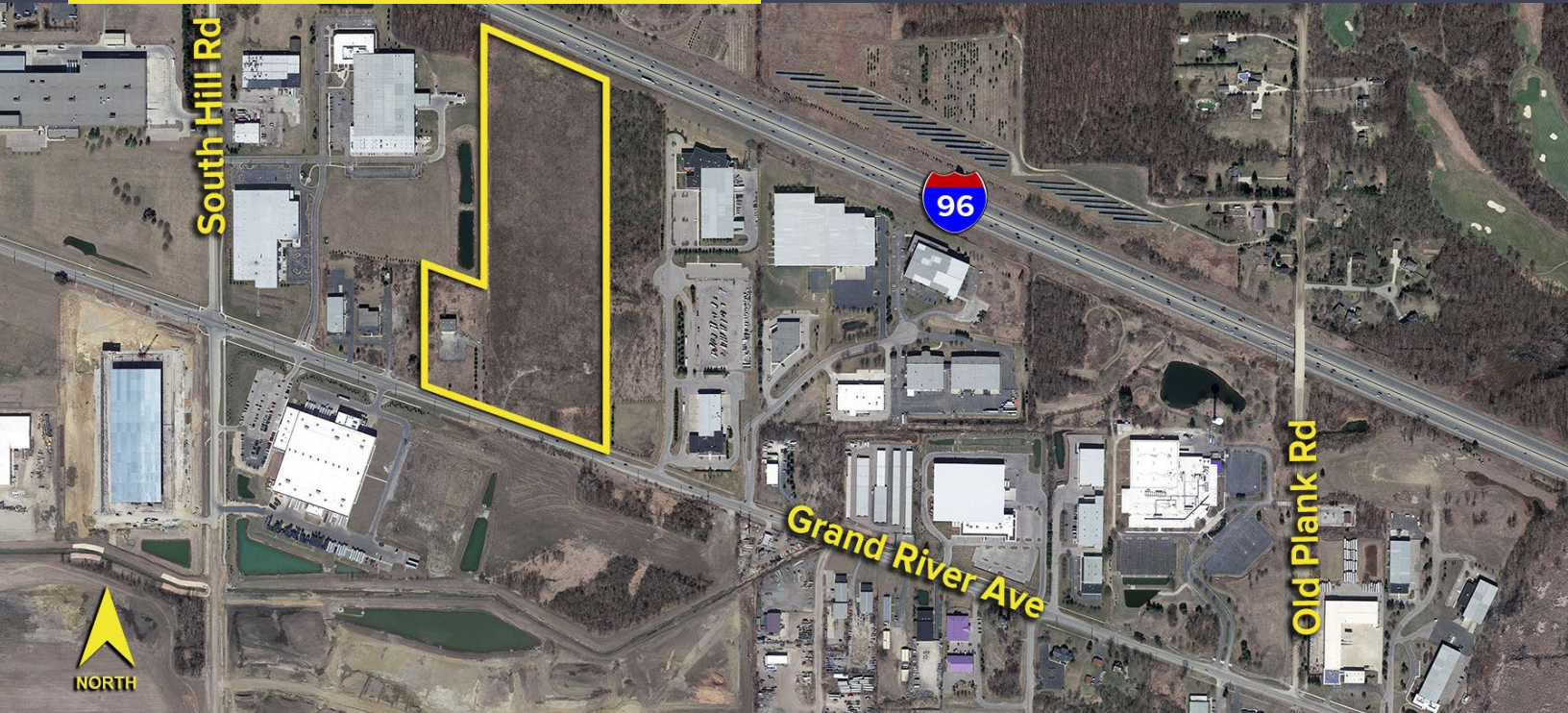
54500 GRAND RIVER AVE.
LYON TWP., MICHIGAN

LAND FOR SALE
30.74 Acres Available



**SIGNATURE
ASSOCIATES**
KNOW SIGNATURE | KNOW RESULTS

I-96 AND GRAND RIVER FRONTAGE



PROPERTY FEATURES

- 30.74 acres available
- I-96 and Grand River Avenue frontage
- Zoned Light Industrial
- One of the last large tracks in Western Oakland County
- 100% usable and balanced
- Can subdivide
- Can build up to 950,000 sq. ft.
- Sale Price: \$10,200,000 (\$331,815.22/acre)



For more information, please contact:

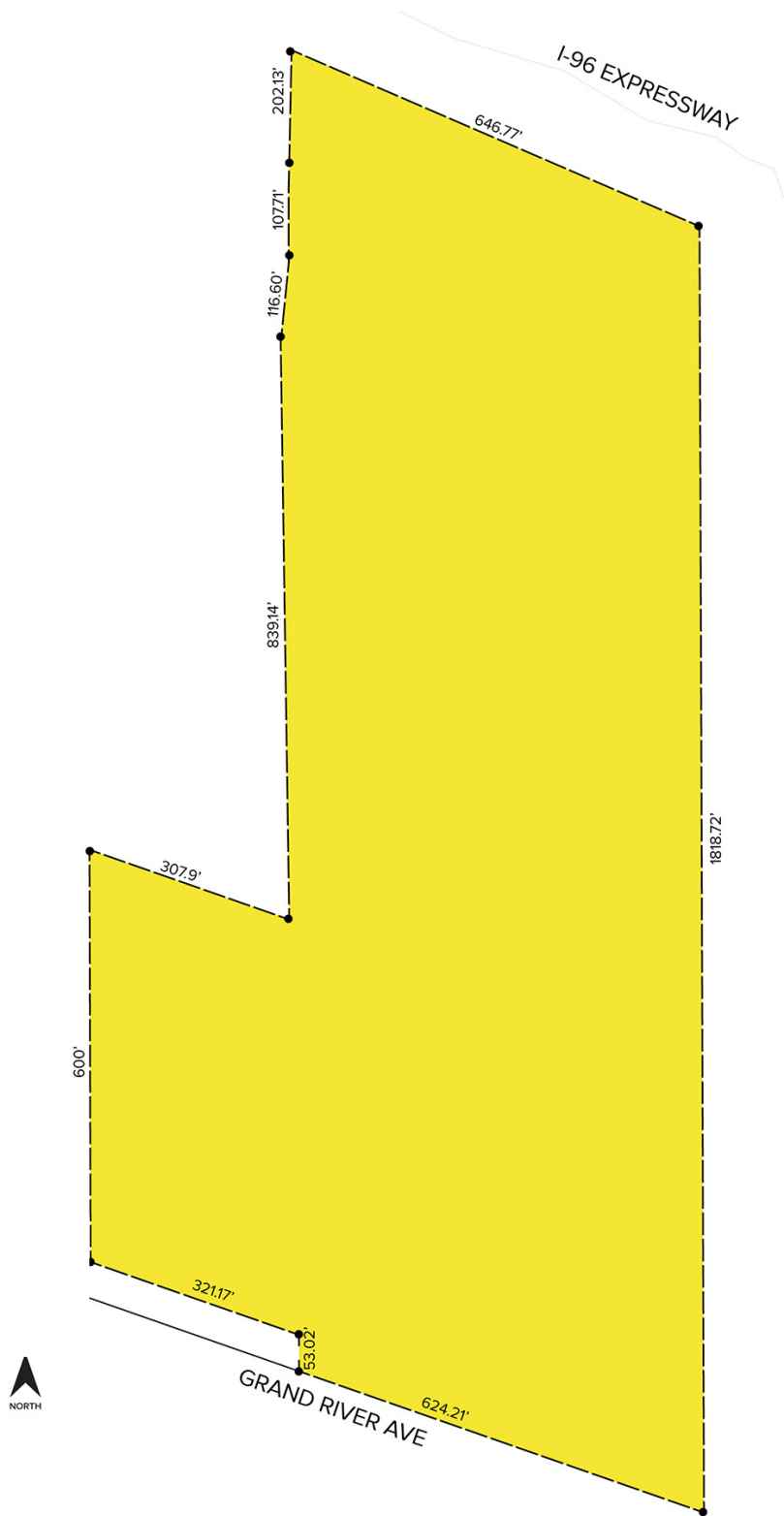
JIM MONTGOMERY
(248) 359 0614
jmontgomery@signatureassociates.com

SIGNATURE ASSOCIATES
One Towne Square, Suite 1200
Southfield, MI 48076
www.signatureassociates.com

54500 Grand River Ave. – Lyon Twp., Michigan
Land For Sale

30.74
Acres
AVAILABLE

Site Plan



For more information, please contact:

JIM MONTGOMERY
(248) 359 0614
jmontgomery@signatureassociates.com

SIGNATURE ASSOCIATES
One Towne Square, Suite 1200
Southfield, MI 48076
www.signatureassociates.com

Information is subject to verification and no liability for errors or omissions is assumed. Price is subject to change and listing withdrawal.