

FOR SALE

1.69+ acre Pad Site w/Basin

1399 Woodlane Road

Eastampton Twp., Burlington County, NJ 08060

Block 600.1, Lot 1

1.69+/- acres at intersection of Woodlane Road & Smithville Road

- Development site located at Eastampton Village Center, with 30 townhouses, 73 apartments and 18 single-family homes
- Sale includes abutting stormwater basin parcel
- Easy access to Rt 206, Rt 38, Rt 70, I-295, NJTP Exit 5



2025 Demographics	1-Mile	3-Mile	5-Mile
Population	6,028	24,293	52,918
Housing Units	2,708	9,956	21,859
Median HH Income	\$86,100	\$51,621	\$68,561



Offered exclusively by:
Joseph R. Ridolfi & Associates, LLC
Commercial Realtors

Phone: 609-581-4848 Fax: 609-581-5511

Website: ridolfi-associates.com

E-Mail: ridolfi@ridolfi-associates.com

All information contained herein has been supplied by sources deemed reliable. Accordingly, no warranty or representation, express or implied, is made as to the accuracy of the information contained herein and same is submitted subject to errors, omissions, change of price, rental or other conditions, withdrawal without notice, and to any special listing conditions imposed by our principals.

FOR SALE

1.69₊ acre Pad Site with Basin

1399 Woodlane Road

Eastampton Twp., Burlington County, NJ

Location: 1399 Woodlane Road, at the intersection of Woodlane Road and Smithville Road in Eastampton Township, Burlington County, New Jersey 08060. Woodlane Road is County Route 630, a major county artery. Property is located at Eastampton Village Center, with 30 townhomes, 73 apartments and 18 single-family homes. Conveniently located near Routes 206, 38, 70, I-295 and the NJ Turnpike, and approx. 10 miles to Joint Base McGuire-Dix-Lakehurst.

Shared Basin: Sale includes abutting stormwater basin which is shared with the Eastampton Residential HOA, which pays 30% of the annual cost to maintain the basin.

Utilities: Utilities in street: electric, gas, water and sewer

Taxes: \$1,164.90 (2025)

Zoning: TCM2 - Town Center Mixed Use 2 District
Approved Uses: Retail/office, including childcare center, professional office, restaurant, beauty salon, fitness/exercise, dry cleaners, etc.

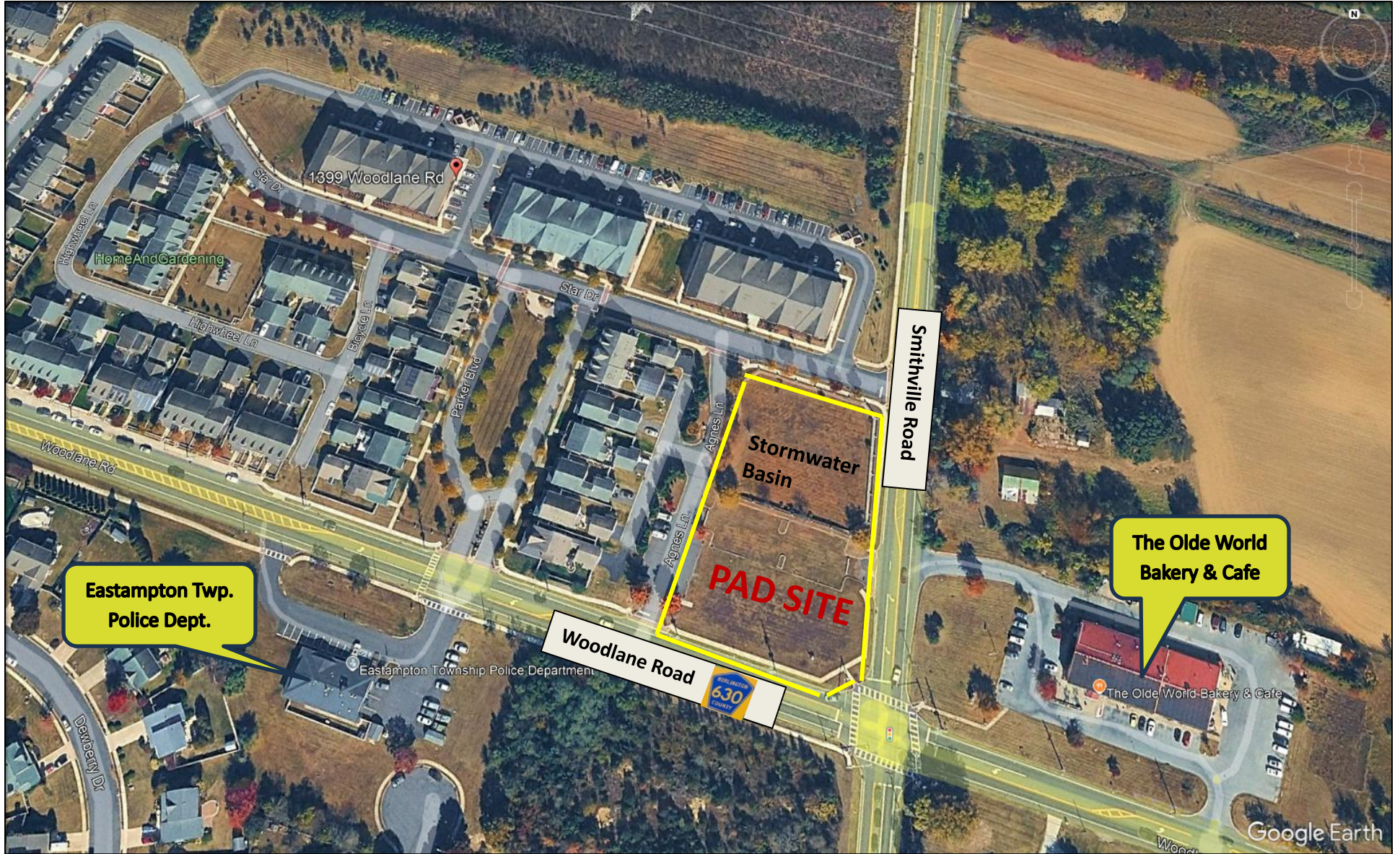
Sale Price: \$1,800,000



Offered exclusively by:
Joseph R. Ridolfi & Associates, LLC

All information contained herein has been supplied by sources deemed reliable. Accordingly, no warranty or representation, express or implied, is made as to the accuracy of the information contained herein and same is submitted subject to errors, omissions, change of price, rental or other conditions, withdrawal without notice, and to any special listing conditions imposed by our principals.

**1399 Woodlane Road, Eastampton Twp., NJ 08060
(County Rt. 630, corner Smithville Road)**



**1399 Woodlane Road, Eastampton Twp., NJ 08060
(County Rt. 630, corner Smithville Road)
Level at Grade Development Site**



New abutting apartments



Restaurant across the street

1399 Woodlane Road, Eastampton Twp., NJ 08060
Located at heavily traveled signalized intersection of County Rt. 630 and
Smithville Road



1399 Woodlane Road, Eastampton Twp., NJ 08060

