

FOR LEASE

# Creekside Logistics Park

7916 HALL RD  
HOUSTON, TX 77075



# Table of Contents

## CREEKSIDE LOGISTICS PARK

### TABLE OF CONTENTS

PROPERTY INFORMATION	3
LOCATION INFORMATION	9

### CONFIDENTIALITY & DISCLAIMER

All materials and information received or derived from PropNex Realty its directors, officers, agents, advisors, affiliates and/or any third party sources are provided without representation or warranty as to completeness, veracity, or accuracy, condition of the property, compliance or lack of compliance with applicable governmental requirements, developability or suitability, financial performance of the property, projected financial performance of the property for any party's intended use or any and all other matters.

Neither PropNex Realty its directors, officers, agents, advisors, or affiliates makes any representation or warranty, express or implied, as to accuracy or completeness of the any materials or information provided, derived, or received. Materials and information from any source, whether written or verbal, that may be furnished for review are not a substitute for a party's active conduct of its own due diligence to determine these and other matters of significance to such party. PropNex Realty will not investigate or verify any such matters or conduct due diligence for a party unless otherwise agreed in writing.

EACH PARTY SHALL CONDUCT ITS OWN INDEPENDENT INVESTIGATION AND DUE DILIGENCE.

Any party contemplating or under contract or in escrow for a transaction is urged to verify all information and to conduct their own inspections and investigations including through appropriate third party independent professionals selected by such party. All financial data should be verified by the party including by obtaining and reading applicable documents and reports and consulting appropriate independent professionals. PropNex Realty makes no warranties and/or representations regarding the veracity, completeness, or relevance of any financial data or assumptions. PropNex Realty does not serve as a financial advisor to any party regarding any proposed transaction. All data and assumptions regarding financial performance, including that used for financial modeling purposes, may differ from actual data or performance. Any estimates of market rents and/or projected rents that may be provided to a party do not necessarily mean that rents can be established at or increased to that level. Parties must evaluate any applicable contractual and governmental limitations as well as market conditions, vacancy factors and other issues in order to determine rents from or for the property.

Legal questions should be discussed by the party with an attorney. Tax questions should be discussed by the party with a certified public accountant or tax attorney. Title questions should be discussed by the party with a title officer or attorney. Questions regarding the condition of the property and whether the property complies with applicable governmental requirements should be discussed by the party with appropriate engineers, architects, contractors, other consultants and governmental agencies. All properties and services are marketed by PropNex Realty in compliance with all applicable fair housing and equal opportunity laws.

An aerial photograph of a large property, likely a commercial or industrial site, with a dashed yellow boundary line indicating the area of interest. The property is surrounded by other buildings, parking lots, and greenery. A highway is visible on the left side of the image.

# Property Information

SECTION 1

# Property Summary

## CREEKSIDE LOGISTICS PARK



### PROPERTY DESCRIPTION

±139,000 SF Building  
±2,933 SF Office  
±136,067 SF  
Divisible to ±69,144 SF  
32' Clear Height  
Tiltwall construction  
Dock High Front Load  
35 Dock Doors 9' X 10'  
Two 14' x 16' Drive-In Ramp  
200 feet building depth  
Column Spacing 50' X 50'  
60' Speed bay  
ESFR sprinkler system  
3 phase, 480 volt, 2000 AMP  
64 vehicle parking spaces  
24 Trailer Parking spaces  
LED Warehouse Lights  
TPO 60 mil Membrane Roof System  
Green Energy Ready(Solar)  
25,000 SF Freezer 0-5 °F  
15,000 SF Cooler

Freeport Tax Exemptions available

### LOCATION DESCRIPTION

28 miles from the container terminals.  
No zoning  
City of Houston utilities

### OFFERING SUMMARY

Lease Rate:	Call Broker
Available SF:	69,144 - 139,000 SF
Lot Size:	9.45 Acres
Building Size:	139,000 SF

# Complete Highlights

## CREEKSIDE LOGISTICS PARK

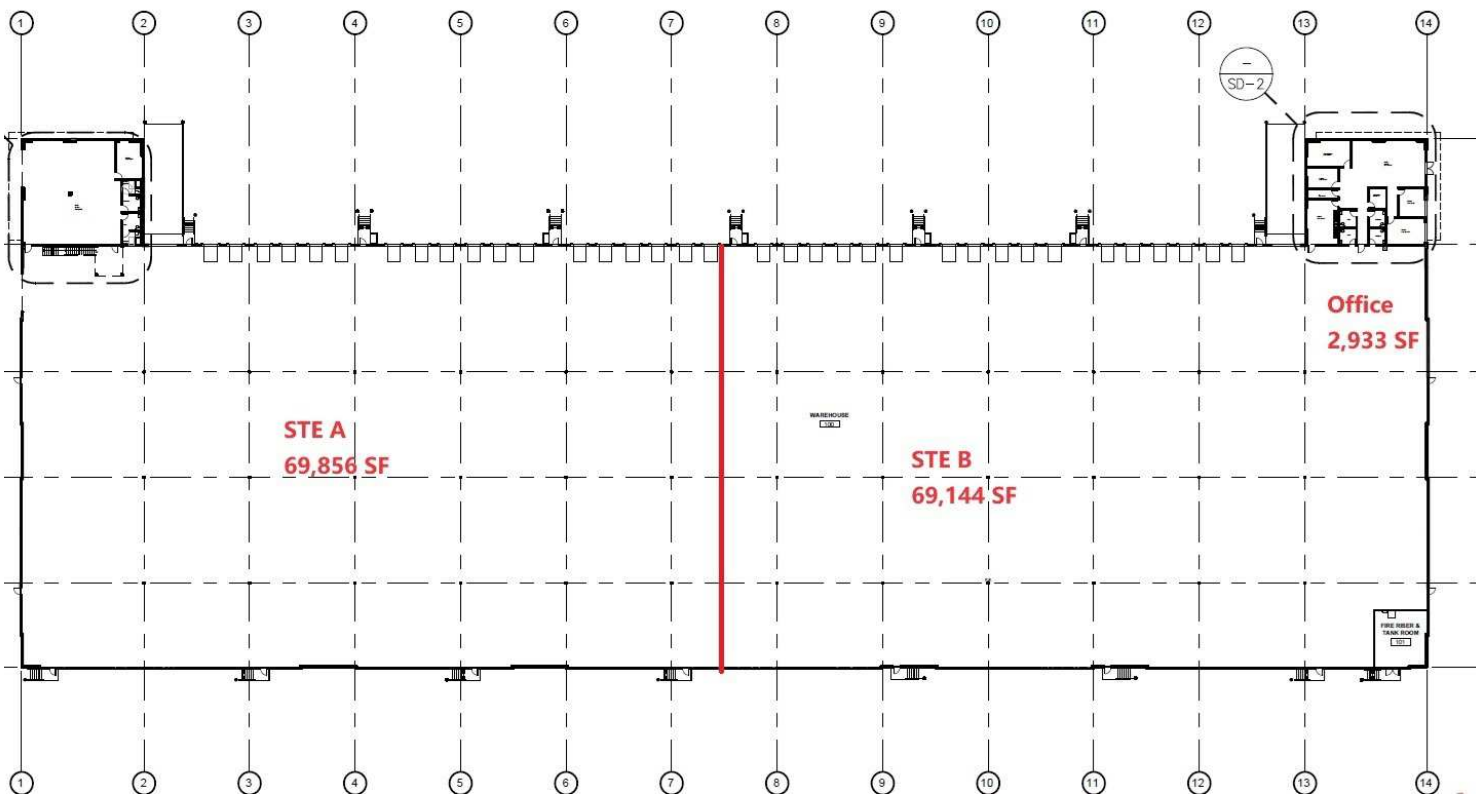
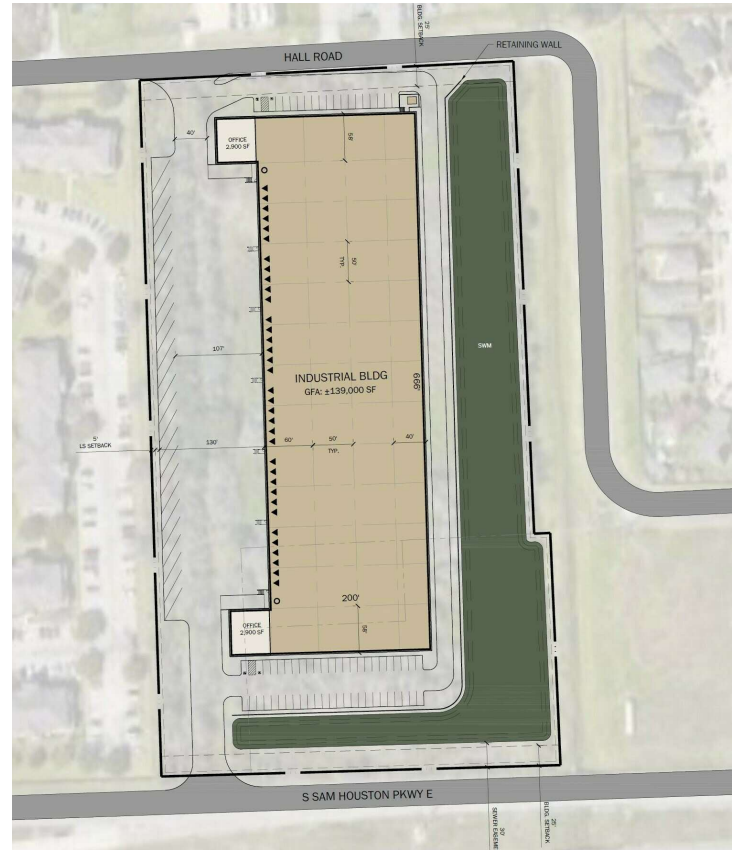
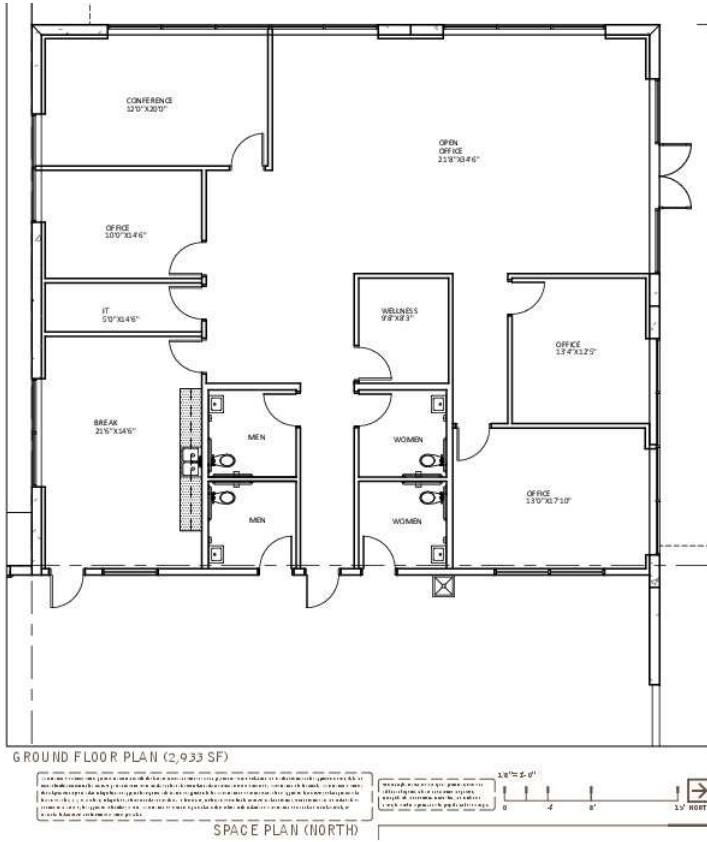
### PROPERTY HIGHLIGHTS

**GREEN ENERGY READY(SOLAR)**  
**25,000 SF FREEZER 0-5 °F**  
**15,000 SF COOLER**  
**DELIVERY 2024 Q4**



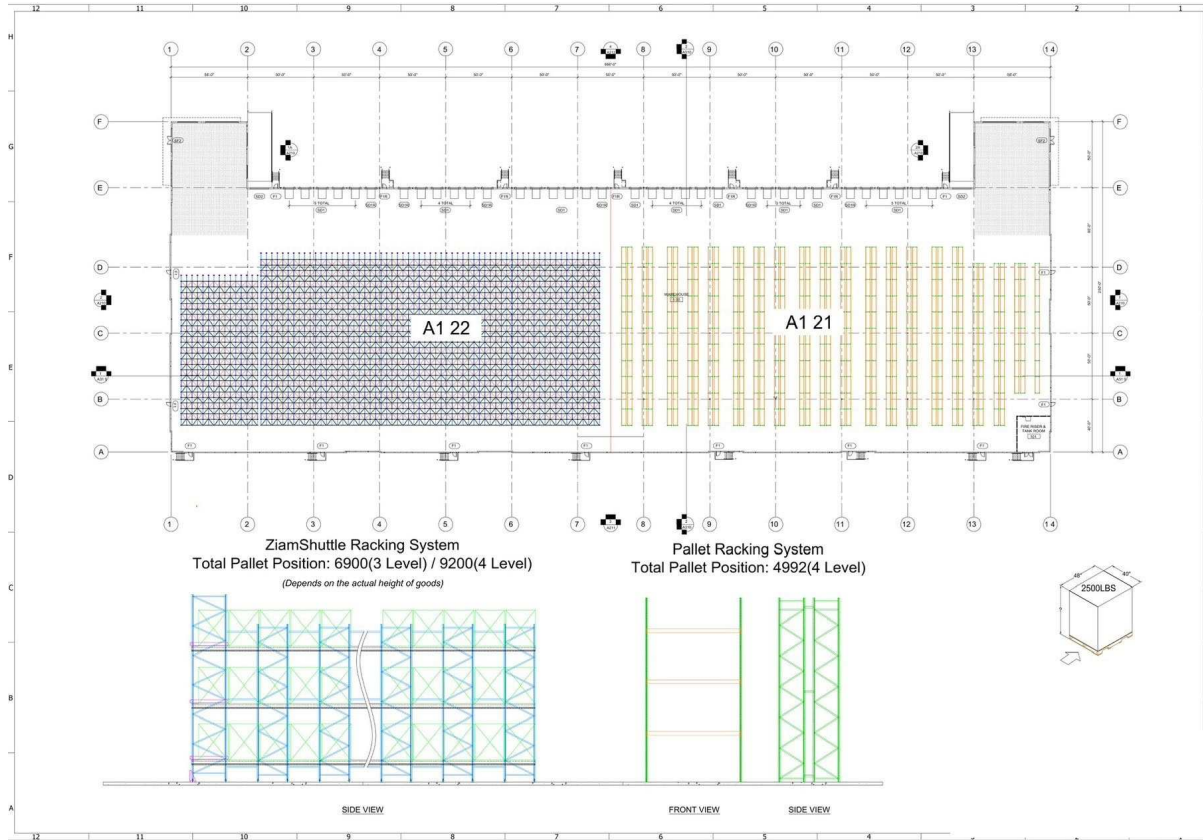
# Additional Photos

## CREEKSIDE LOGISTICS PARK



# Additional Photos

## CREEKSIDE LOGISTICS PARK



# Additional Photos

## CREEKSIDE LOGISTICS PARK

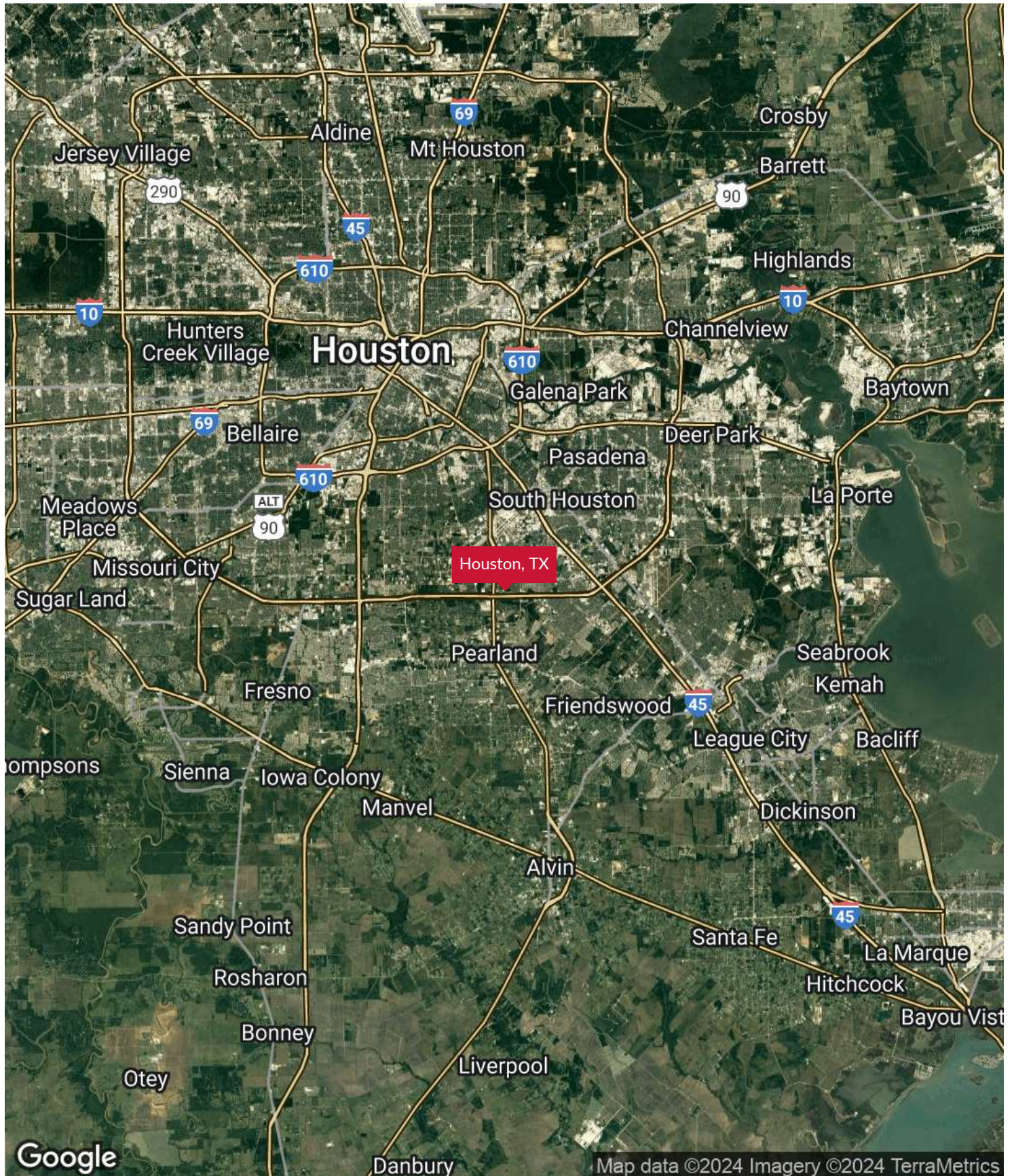


# Location Information

## SECTION 2

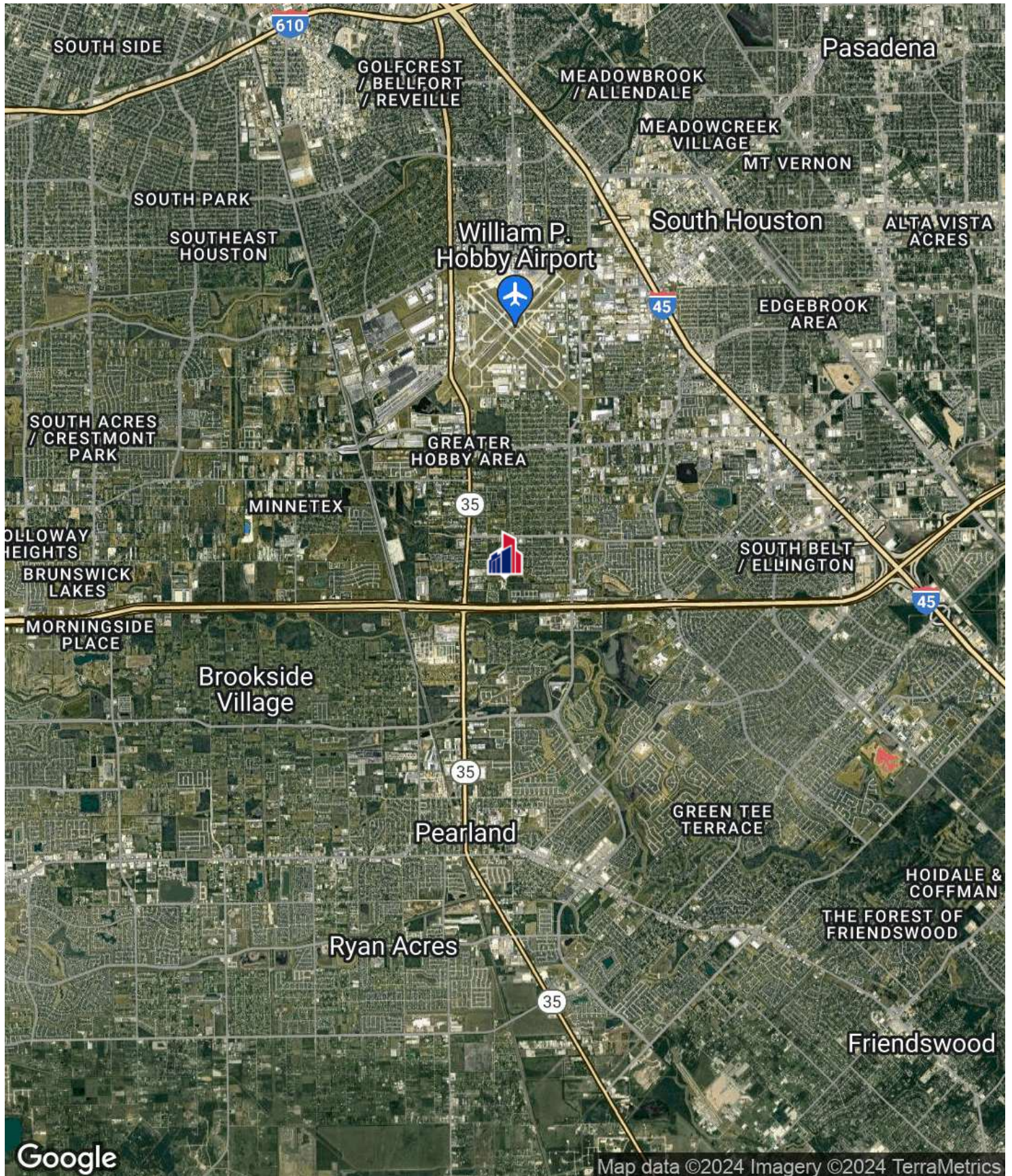
# Regional Map

## CREEKSIDE LOGISTICS PARK



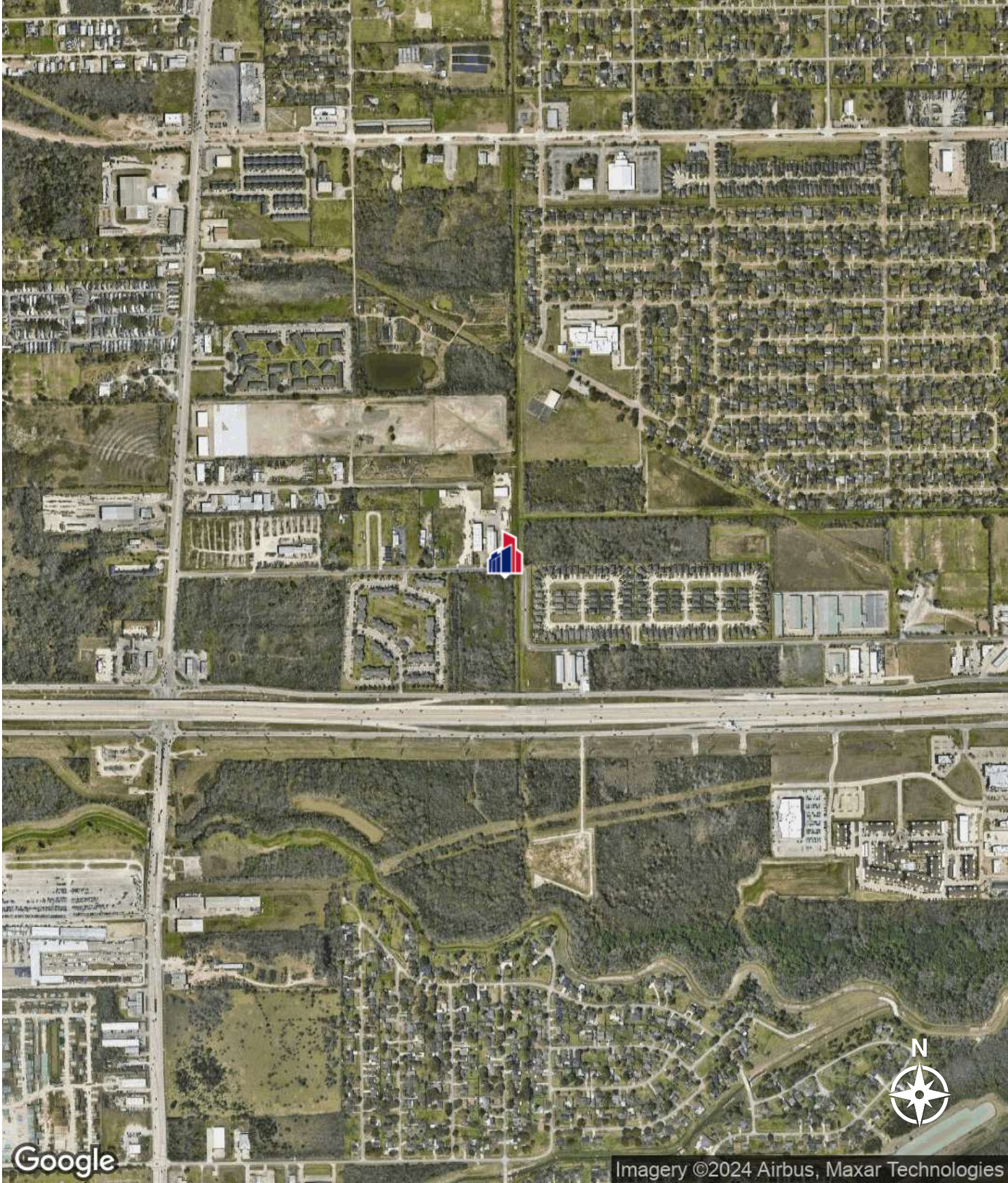
# Location Map

## CREEKSIDE LOGISTICS PARK



# Aerial Map

## CREEKSIDE LOGISTICS PARK





# Advisor Bio 1

CREEKSIDE LOGISTICS PARK



**DAVID WANG. CCIM SIOR**

**CEO**

David.Wang@PropNexUSA.com

Direct: 832.913.5188 | Cell: 832.806.8886

TX #634280 // GA #436855