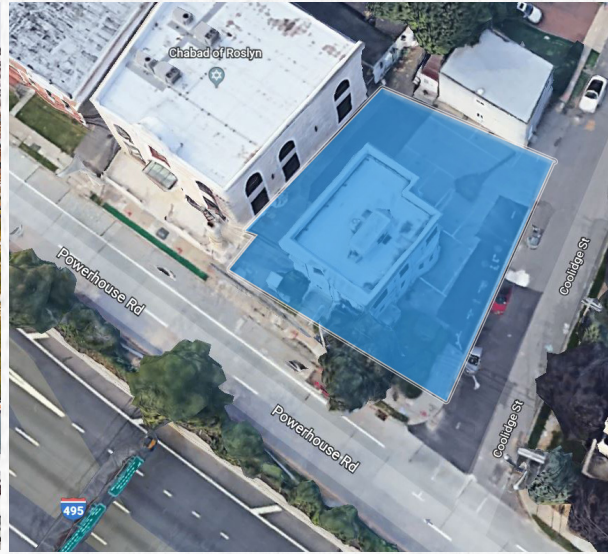


73

POWERHOUSE ROAD ROSLYN HEIGHTS, NY



4,128

 SQUARE FEET AVAILABLE

- ON-SITE AND STREET PARKING ARE AVAILABLE
- IDEAL FOR LAW FIRM, ACCOUNTING & BUSINESS SERVICES
- CLOSE PROXIMITY TO THE MINEOLA COURTS, LONG ISLAND RAILROAD, LONG ISLAND EXPRESSWAY AND NORTHERN STATE PARKWAY

ASKING SALE/LEASE PRICE: UPON REQUEST

Copyright © 2019 Colliers International.
Information herein has been obtained from sources deemed reliable, however its accuracy cannot be guaranteed. The user is required to conduct their own due diligence and verification.



EXCLUSIVE AGENT

SCOTT SILVERSTEIN

516 284 3443 | DIRECT

LONG ISLAND, NY

NYS Licensed RE Salesperson

scott.silverstein@colliers.com