

AVAILABLE

2205 Tazewell Street

2205 Tazewell Street, Richmond, VA 23222



Exclusive Agent:

WILSON FLOHR, SIOR
(804) 521-1458
wilson@porterinc.com

HIGHLIGHTS

- 6,400 SF of Flex Space (~2,300 SF Office, 4,100 SF Warehouse)
- Fenced Outside Parking and Storage area
- 0.28 Acres
- 2 Dock Doors
- City Of Richmond
- Available Jan 1, 2025
- For Lease: \$4,800 IG

4801 Radford Avenue | P.O. Box 6482
Richmond, VA 23230
www.porterinc.com
804-353-7994

PORTER
R E A L T Y

CORFAC
INTERNATIONAL

SIOR

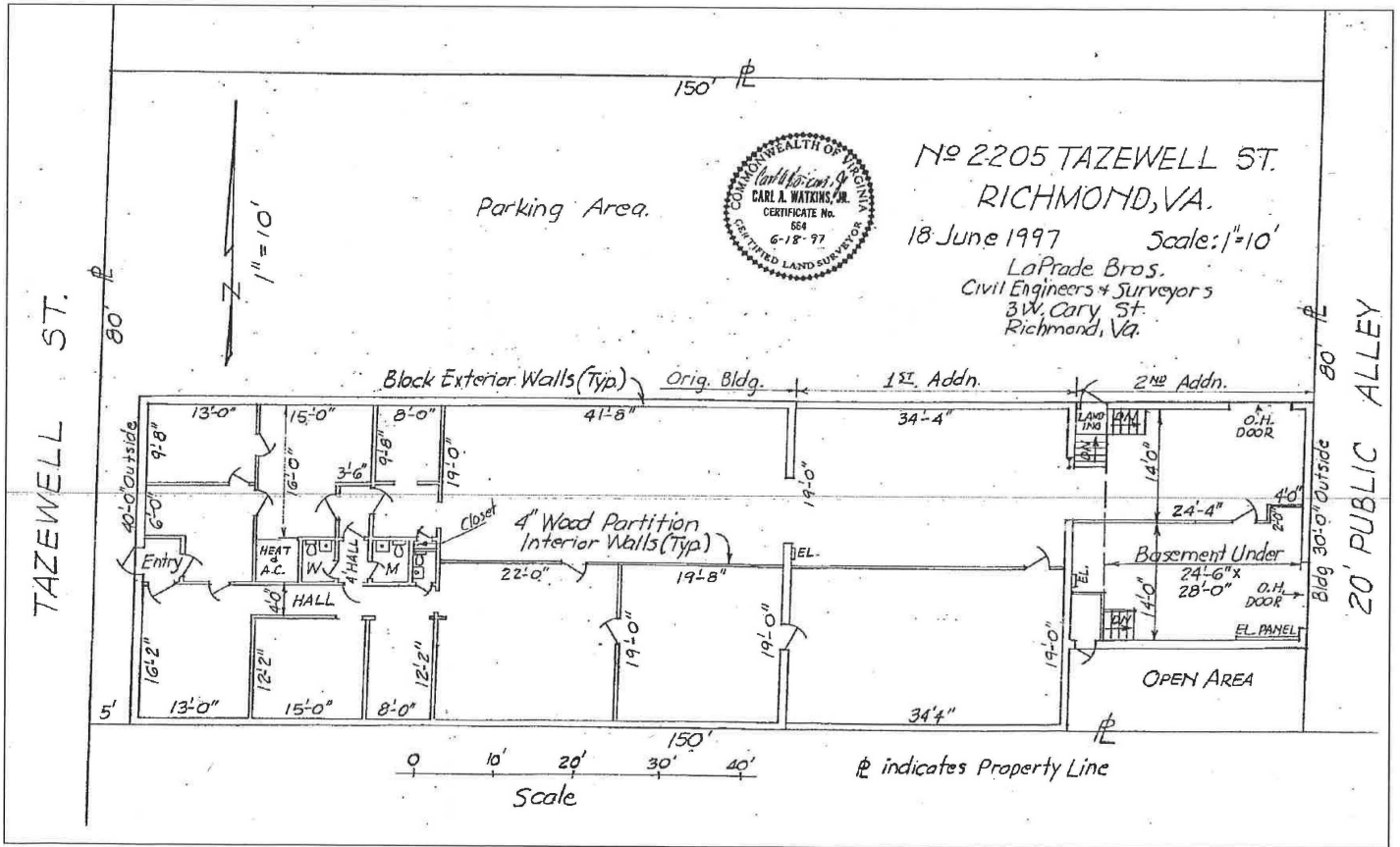
CCIM

This information has been prepared by Porter Realty Company, Inc. for marketing purposes only. No representation or warranty, expressed or implied, is made as to the accuracy of the foregoing information. Terms of sale or lease and availability are subject to change or withdrawal without notice.

PROPERTY PHOTOS

2205 Tazewell Street | Richmond, VA 23222

2205 Tazewell Street



Wilson Flohr, SIOR
(804) 521-1458
wilson@porterinc.com



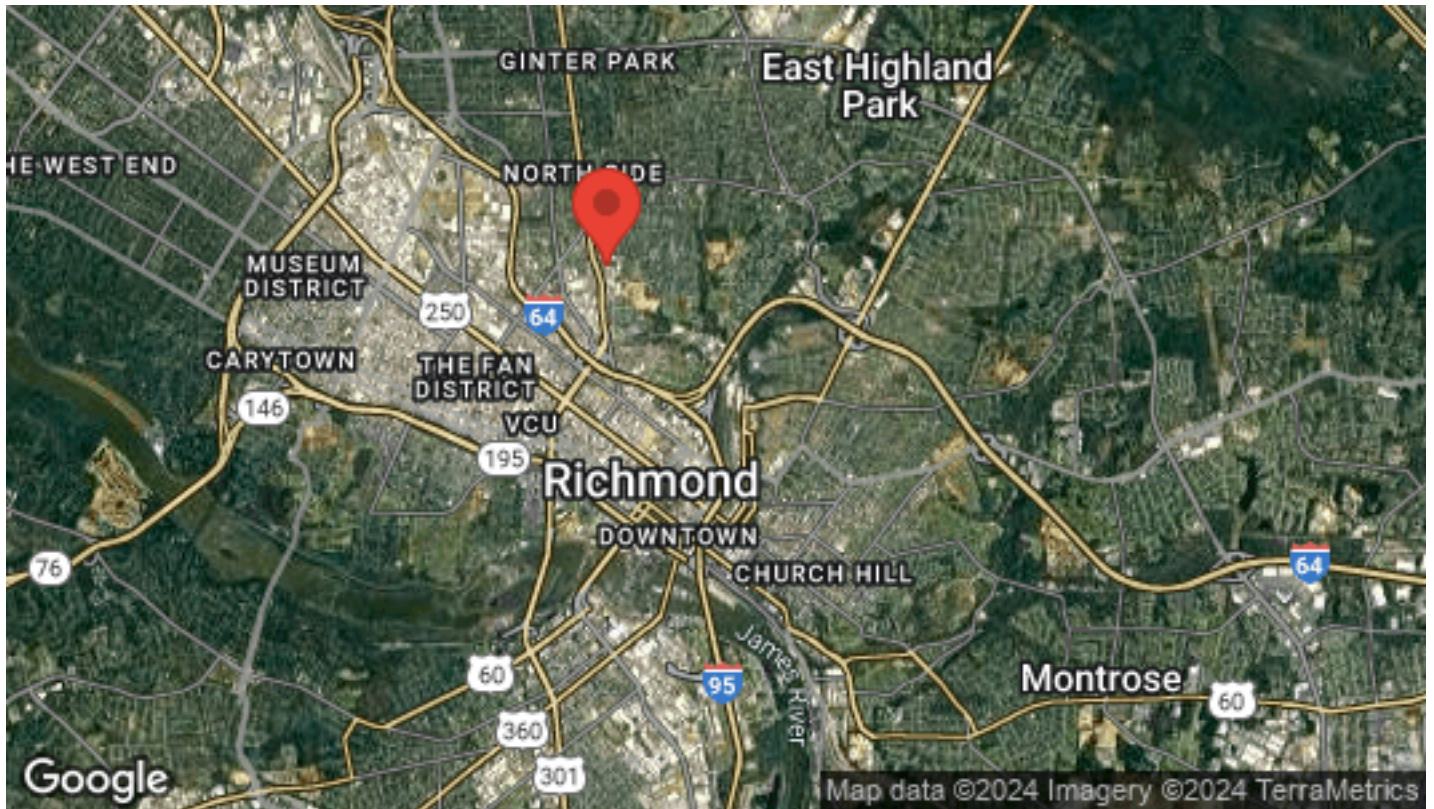
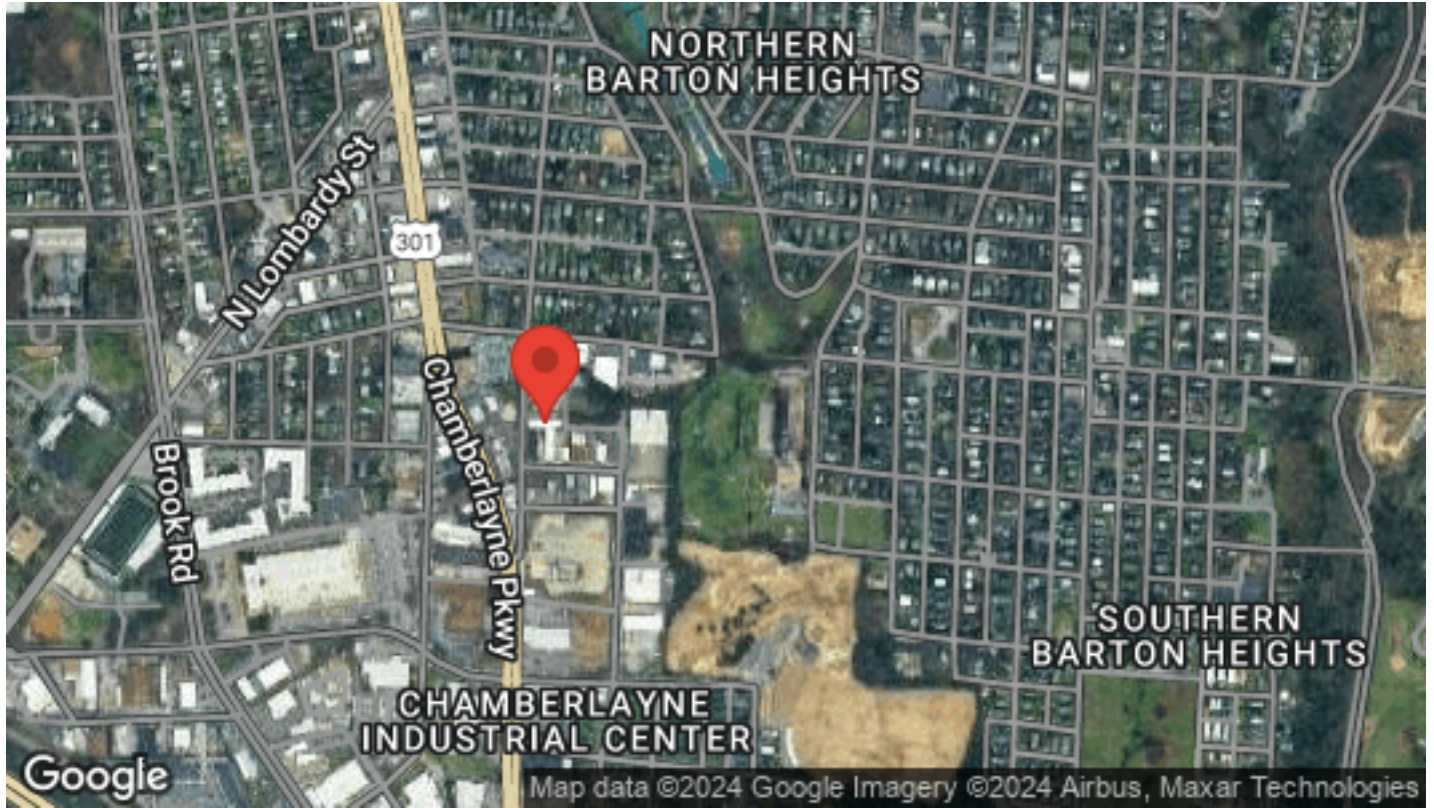
Porter Realty Company, Inc. | 4801 Radford Avenue | P.O. Box 6482 | Richmond, VA 23230 | www.porterinc.com

This information has been prepared by Porter Realty Company, Inc. for marketing purposes only. No representation or warranty, expressed or implied, is made as to the accuracy of the foregoing information. Terms of sale or lease and availability are subject to change or withdrawal without notice.

LOCATION MAPS

2205 Tazewell Street | Richmond, VA 23222

2205 Tazewell Street



Wilson Flohr, SIOR
(804) 521-1458
wilson@porterinc.com



Porter Realty Company, Inc. | 4801 Radford Avenue | P.O. Box 6482 | Richmond, VA 23230 | www.porterinc.com

This information has been prepared by Porter Realty Company, Inc. for marketing purposes only. No representation or warranty, expressed or implied, is made as to the accuracy of the foregoing information. Terms of sale or lease and availability are subject to change or withdrawal without notice.