

# 5438 W 104th St

**Single Tenant Industrial Warehouse for Sale**

Richard S. Tovar  
*Vice President*  
626-422-5819

 **JLL** SEE A BRIGHTER WAY

***Purchase Price \$5,550,000***



# Property Summary

## Property Details

GLA: 11,400 SF

Year Built: 1952

Construction: Masonry

Parking Ratio: 1.92/1,000 SF

Land: 19,602 SF

Zoning: M2

Tenancy: Single Tenant

Power: 400a/270 – 480v 3p

Parking Spaces: 20 Surface

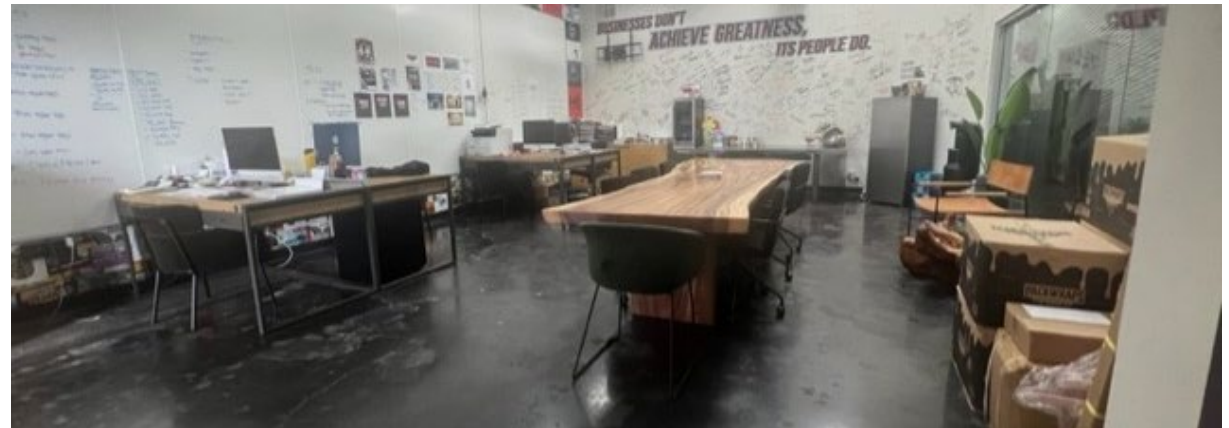
Parcel: 4129-034-012



# Interior Photos



# Interior Photos



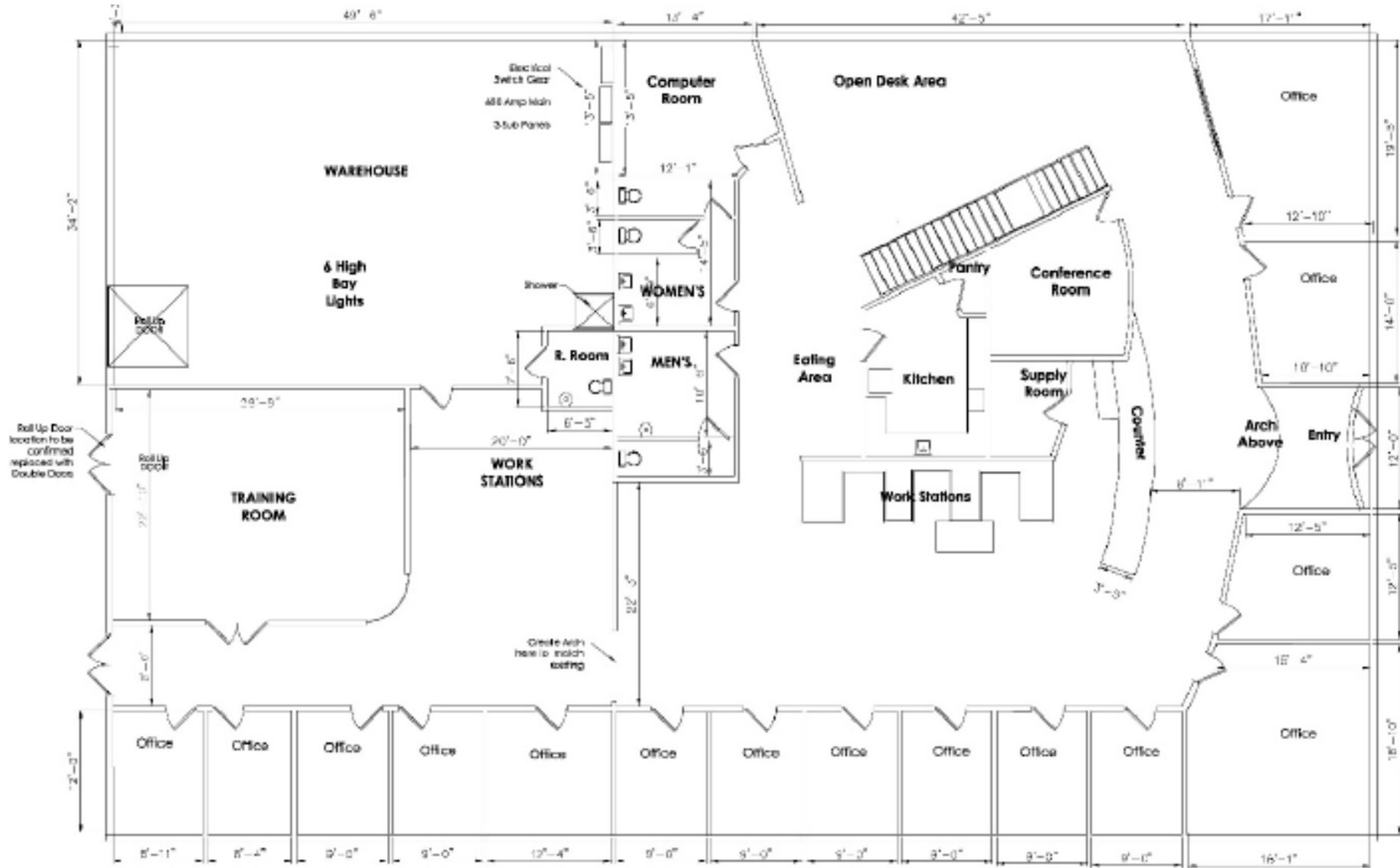
# Interior Photos



# Building Rear

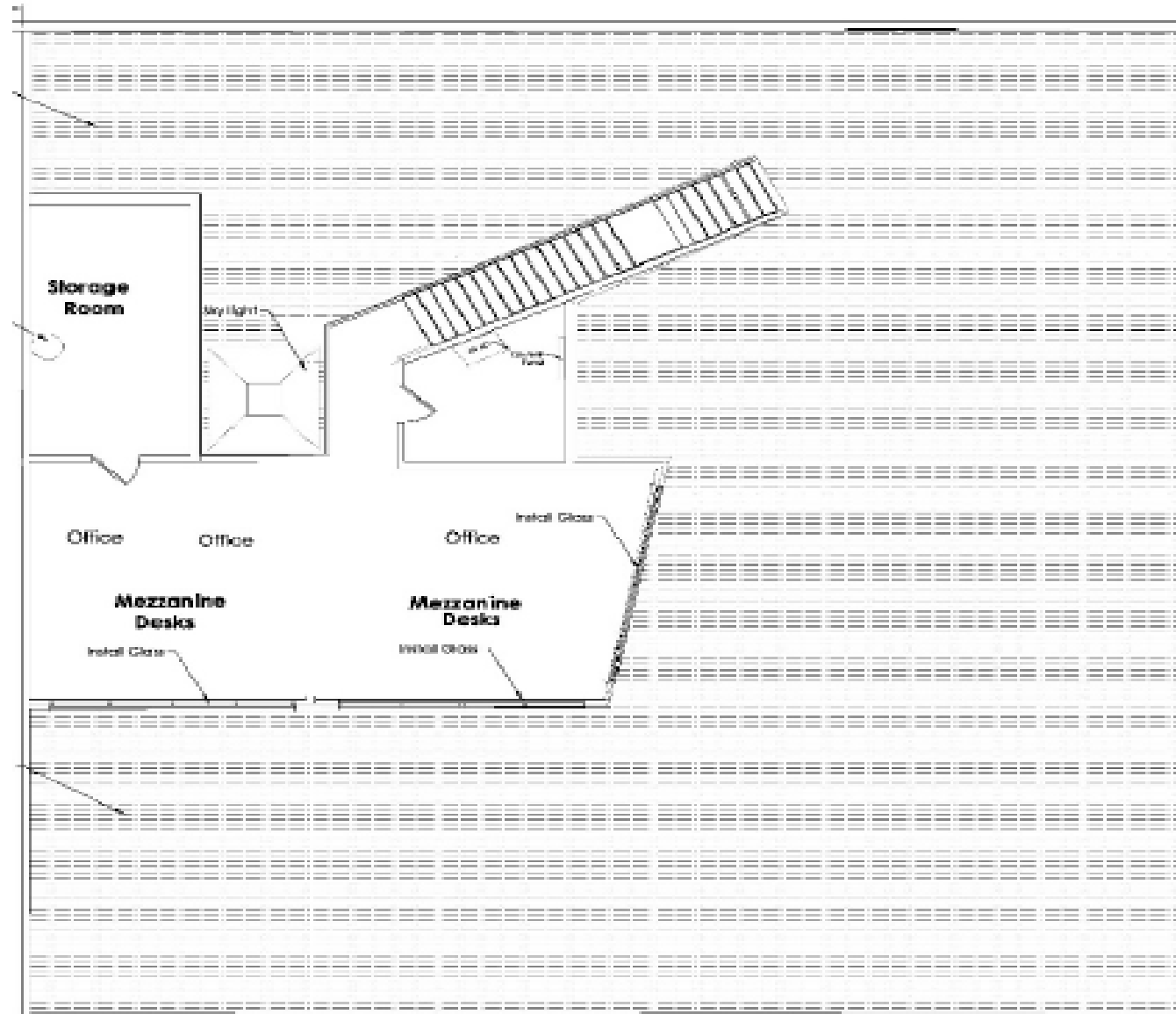


# Floor Plan: 1<sup>st</sup> Floor

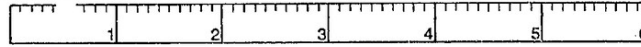




# Floor Plan: 2<sup>nd</sup> Floor



# Parcel Map



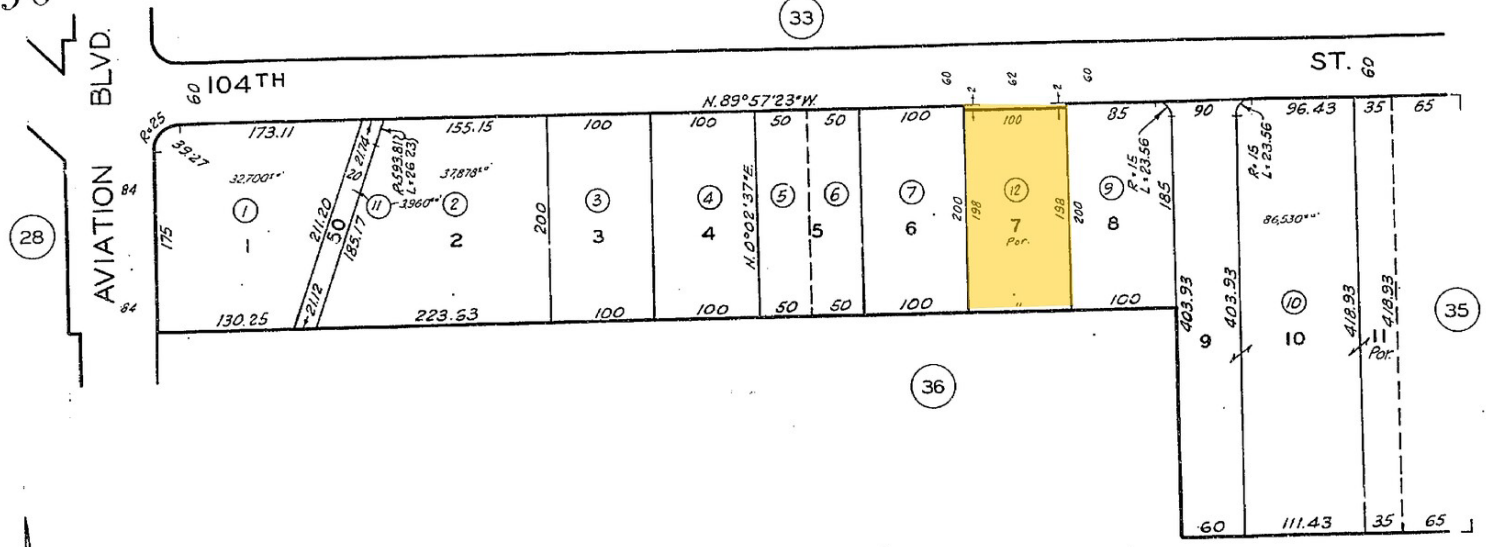
SCALE IN 1/10 OF AN INCH

4129 34

SCALE 1" = 100'

1996

REVISED  
8-24-62  
92060300023001-25  
95101704.005001-25



TRACT NO. 14596  
M. B. 348-41-44

CODE 302

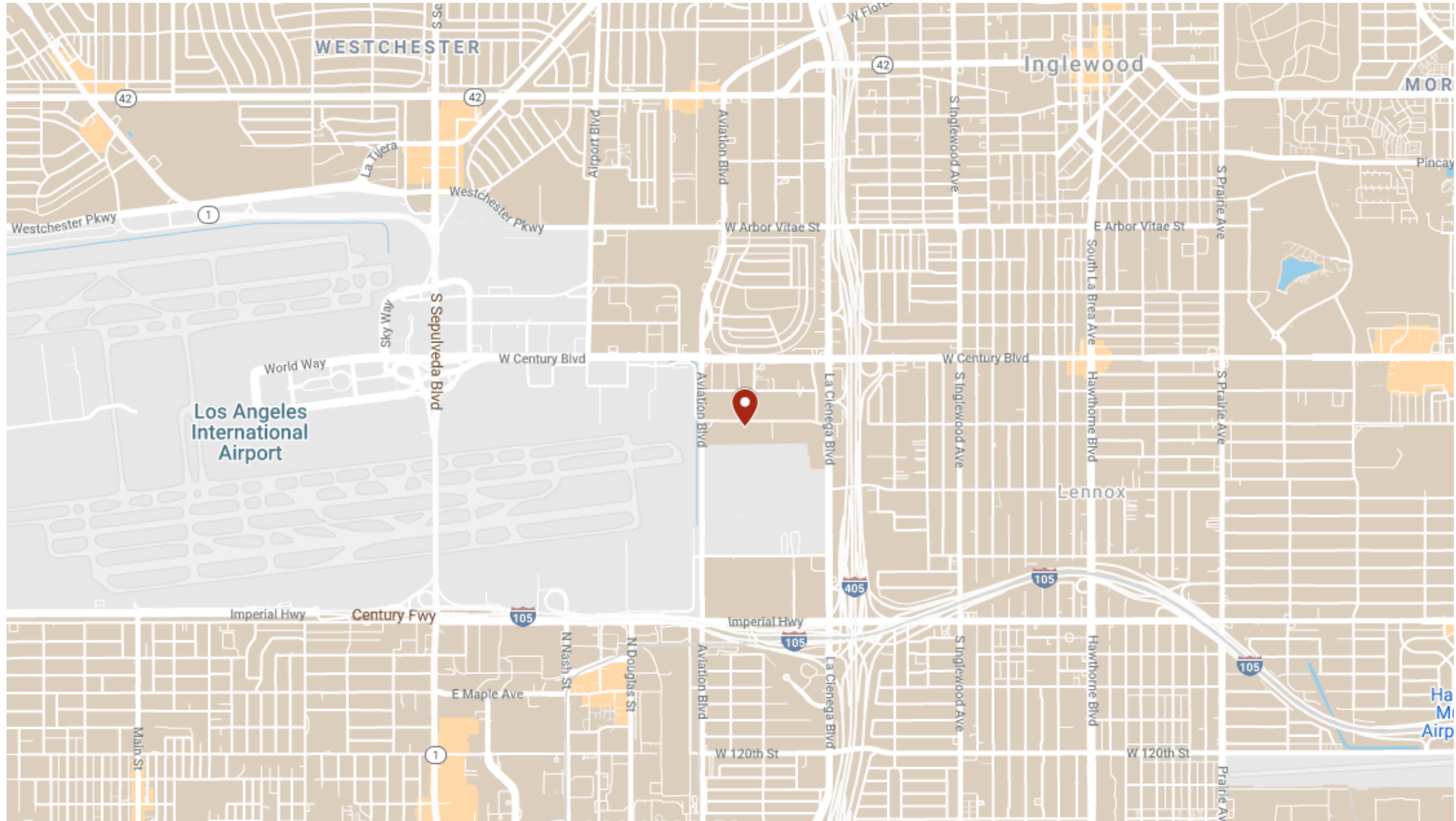
FOR PREV. ASSMT. SEE:  
4129-34

NOV 14 1995

ASSESSOR'S MAP  
COUNTY OF LOS ANGELES, CALIF.



# Location Map



# Disclaimer

The information contained in this document is proprietary to Jones Lang LaSalle and shall be used solely for the purposes of evaluating this proposal. All such documentation and information remains the property of Jones Lang LaSalle and shall be kept confidential. Reproduction of any part of this document is authorized only to the extent necessary for its evaluation. It is not to be shown to any third party without the prior written authorization of Jones

Lang LaSalle. All information contained herein is from sources deemed reliable; however, no representation or warranty is made as to the accuracy thereof.

