

FOR LEASE - LAKESIDE SHOPPING CENTER

RETAIL SPACES

567 SUMMERFIELD RD, SANTA ROSA, CA 95405

Northern California's Premier Commercial Real Estate Firm



The above information, while not guaranteed, has been secured from sources we believe to be reliable. This is not an offer to sell or lease and is subject to change or withdrawal. Any interested party should verify the status of the property and the information herein.



PROPERTY SUMMARY

Site

Access:	Multiple entry points from Summerfield & Montgomery Dr
Daily Traffic Count: Summerfield Road:	16,000+/- DTC
Frontage:	570 LF on Summerfield Road
Parking:	200+/- Parking Spaces
Zoning:	CN - Commercial Neighborhood



UNIT	SPACE	RENTABLE Sq. Ft.	LEASE	BASE Mo. RENT	Est. CAM Mo.	TOTAL MO. COST
567A	Retail	675+/- Sq. Ft.	NNN	\$1,147.50 (\$1.70 Per Sq. Ft.)	\$418.50 (\$0.62 per Sq. Ft.)	\$1,566 (\$2.32 per Sq. Ft.)
567B	Retail	1,125+/- Sq. Ft.	NNN	\$1,800 (\$1.60 Per Sq. Ft.)	\$697.50 (\$0.62 Per Sq. Ft.)	\$2,497.50 (\$2.22 per Sq. Ft.)

Located in East Santa Rosa, Lakeside Shopping Center offers excellent visibility and access along Summerfield Road, between Montgomery Drive and Sonoma Avenue. With 16,000± daily traffic counts, multiple entry points, strong pedestrian access, and abundant on-site parking, the center is easily accessible and well-trafficked. Positioned directly across the street from three of Santa Rosa's most popular outdoor destinations—Howarth Park (138± acres), Spring Lake Regional Park (320± acres), and Annadel State Park (5,000± acres)—the center benefits from a steady flow of both local residents and park visitors year-round. Neighboring tenants like Mary's Pizza, Paradise Sushi, Mr. Pickles Sandwich Shop, Yogurt Time, and East West Cafe, the center is a popular neighborhood destination. Zoned CN (Commercial Neighborhood), it's well-suited for a variety of uses.

567 Summerfield Rd – Unit A

This 675 sq. ft. space offers excellent visibility along Summerfield Road and is well-suited for a variety of retail or service uses. With a flexible layout, ample parking—including convenient ADA spaces located just to the north side of the building—it's a great opportunity for a small business looking to join an active neighborhood center.

567 Summerfield Rd – Unit B

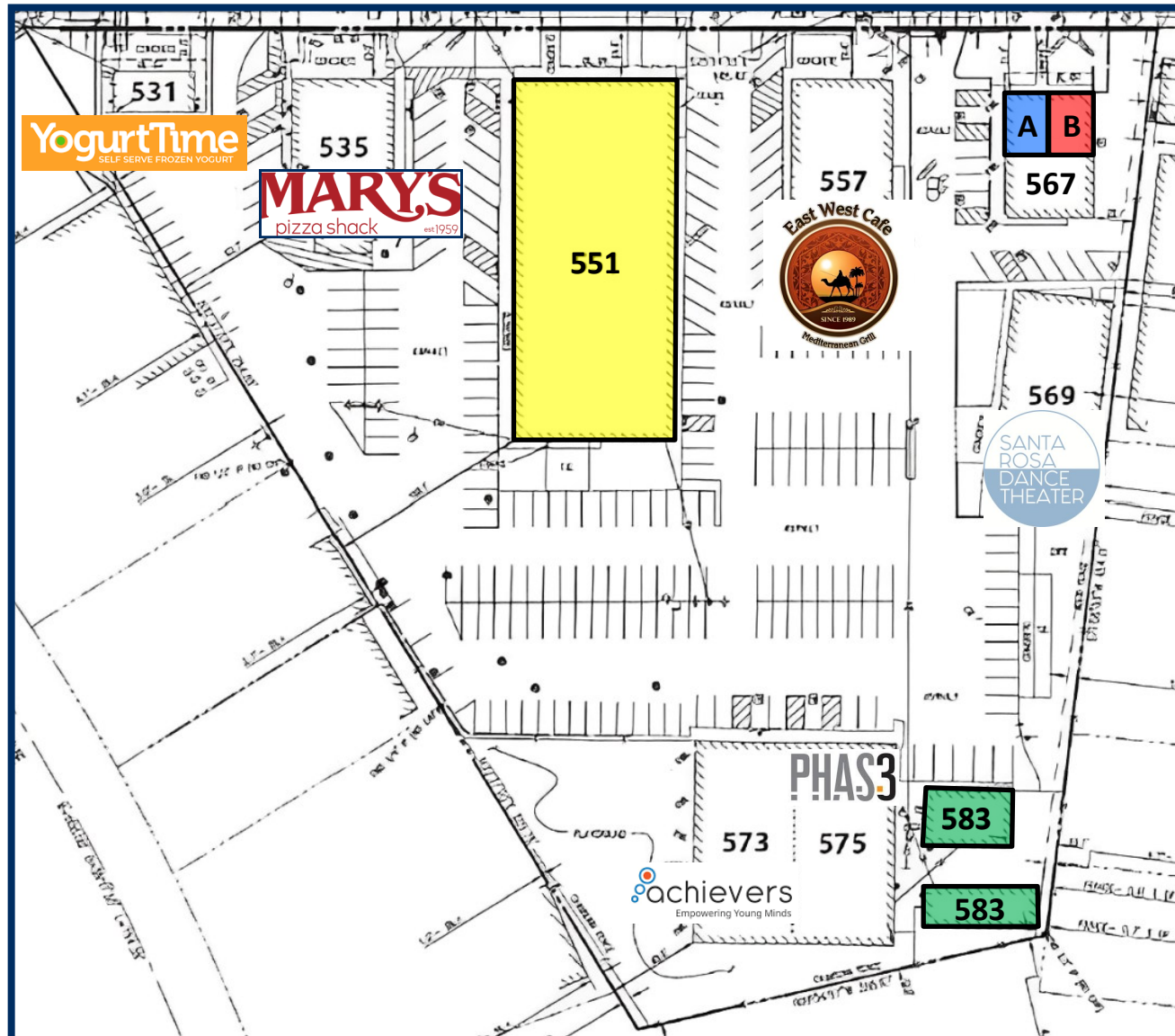
At approx. 1,125 sq. ft., Unit B was formerly a beauty bar, making it ideal for salon, skincare, or other personal service businesses. It features prominent frontage, easy customer access, and existing plumbing improvements that support salon use—while still offering a blank canvas for your own layout and equipment.

This center is ideal for businesses seeking high visibility, convenient access, and a well-established community.







SITE PLAN

Summerfield Rd



Available Spaces:

-  **Unit 567A**
Retail Space: 675+/- Square Feet
-  **Unit 567B**
Retail Space: 1,125+/- Square Feet
-  **Unit 551**
Retail Space: 14,400+/- Square Feet
-  **Unit 583**
Office Space: 2,192+/- Square Feet



The above information, while not guaranteed, has been secured from sources we believe to be reliable. This is not an offer to sell or lease and is subject to change or withdrawal. Any interested party should verify the status of the property and the information herein.



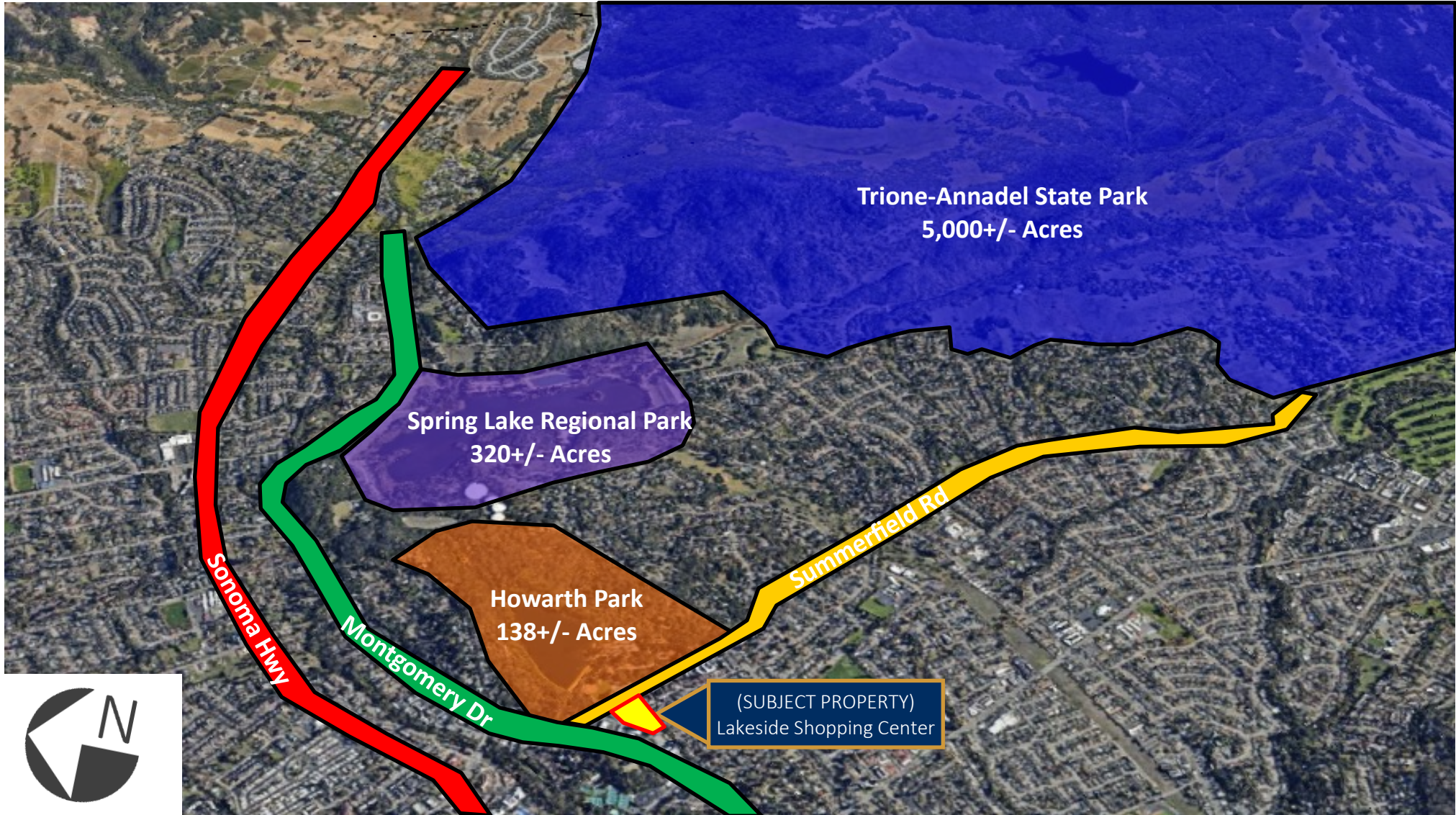
NEIGHBORHOOD AERIAL MAP



The above information, while not guaranteed, has been secured from sources we believe to be reliable. This is not an offer to sell or lease and is subject to change or withdrawal. Any interested party should verify the status of the property and the information herein.

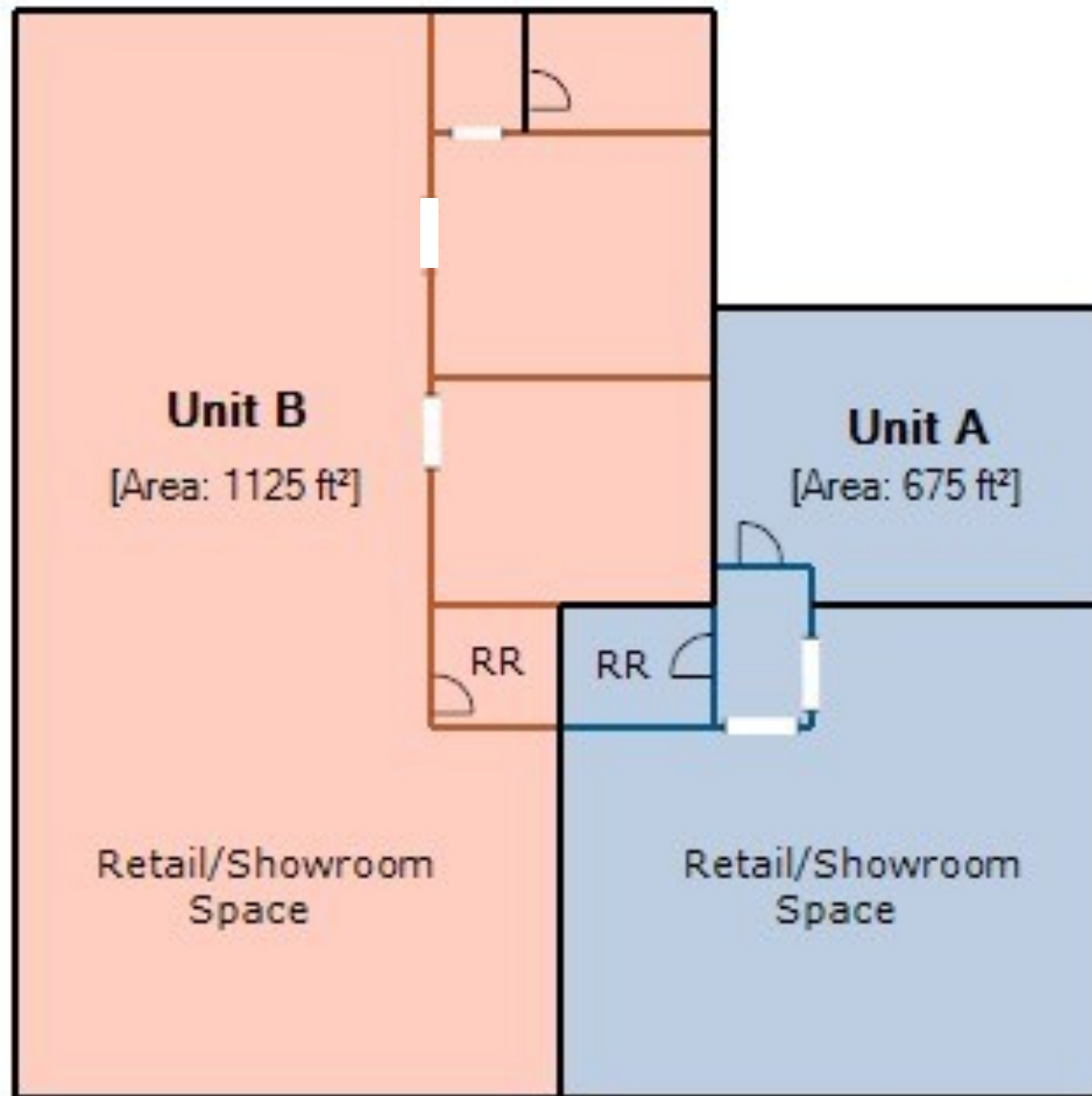


LOCATION AERIAL MAP





567 SUMMERFIELD UNIT A & B FLOOR PLAN





567 SUMMERFIELD UNIT A PHOTOS



The above information, while not guaranteed, has been secured from sources we believe to be reliable. This is not an offer to sell or lease and is subject to change or withdrawal. Any interested party should verify the status of the property and the information herein.



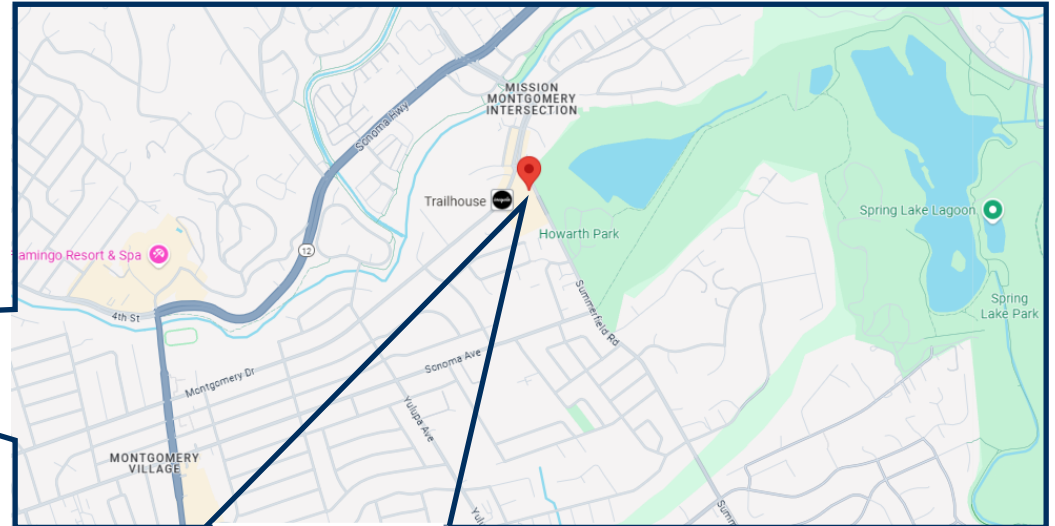
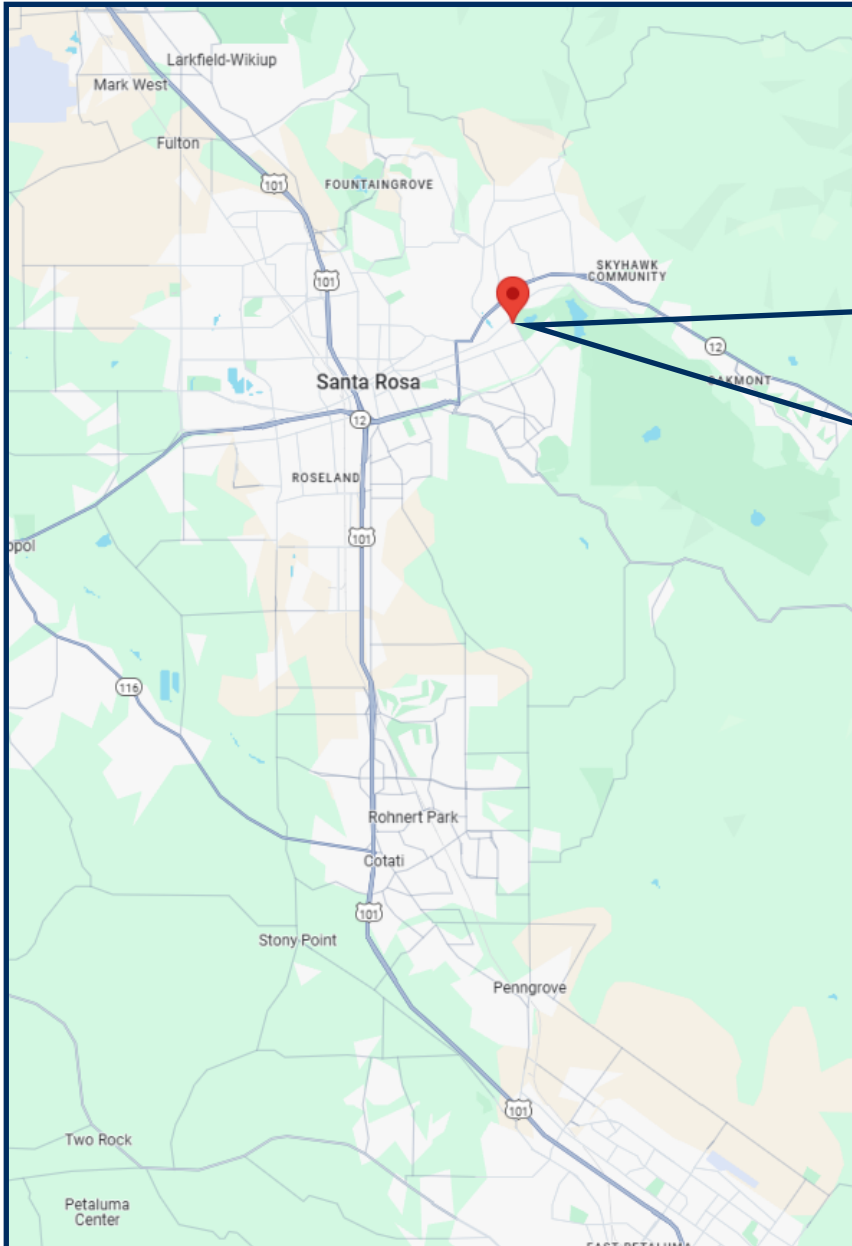
567 SUMMERFIELD UNIT B PHOTOS



The above information, while not guaranteed, has been secured from sources we believe to be reliable. This is not an offer to sell or lease and is subject to change or withdrawal. Any interested party should verify the status of the property and the information herein.



MAPS



The above information, while not guaranteed, has been secured from sources we believe to be reliable. This is not an offer to sell or lease and is subject to change or withdrawal. Any interested party should verify the status of the property and the information herein.



LISTING TEAM



Nick Abbott, CCIM

CA BRE # 01357548

Direct: 707-529-1722

Office: 707-523-2700

Email: Nabbott@NorthBayProp.com



Alexis Perez

CA BRE # 02238668

Phone: 707-523-2700

Cell: 707-304-5841

Email: aperez@northbayprop.com

North Bay Property Advisors

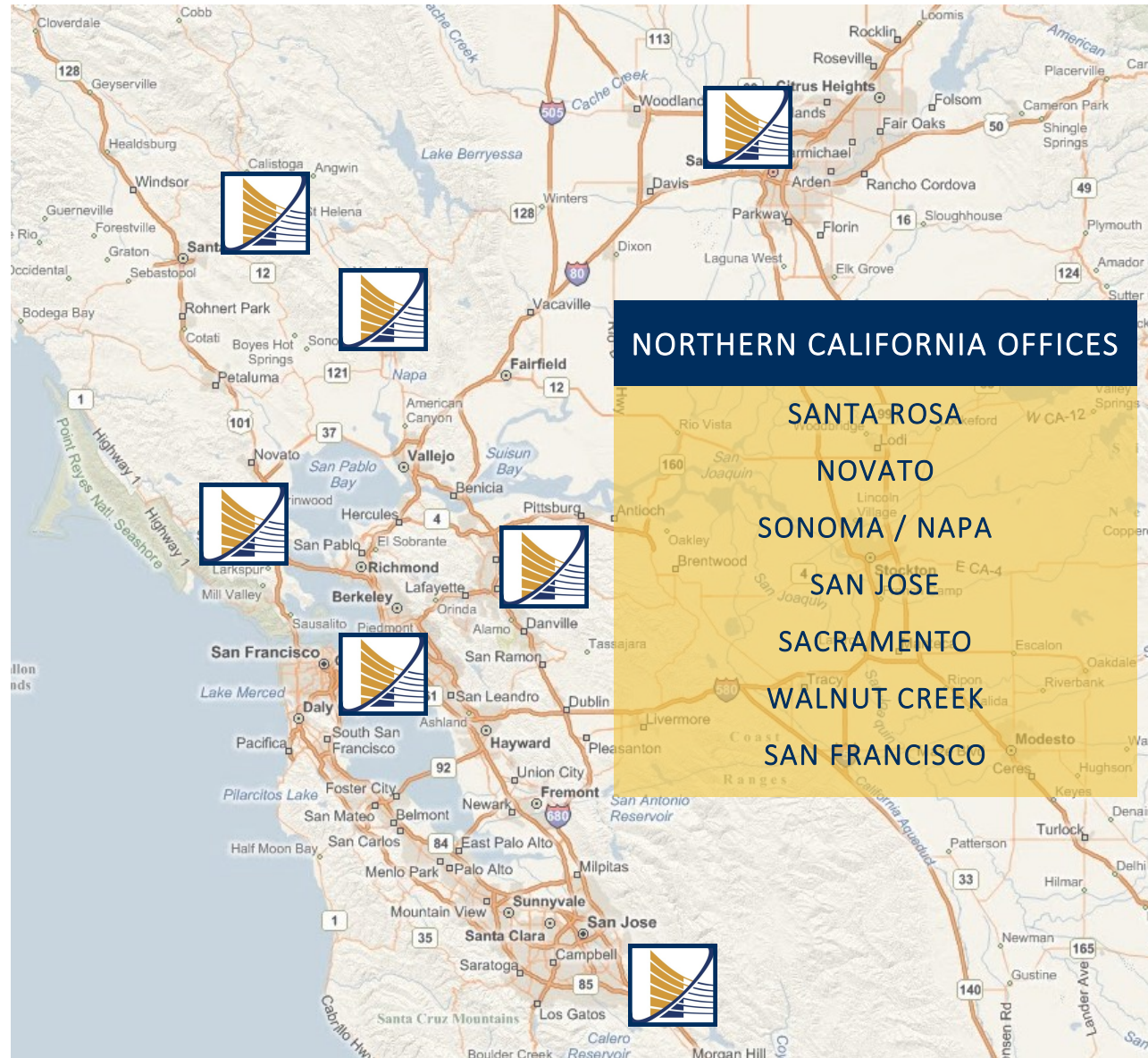
Santa Rosa Office

823 Sonoma Ave

Santa Rosa, CA 95403

707-523-2700

www.NorthBayProp.com



The above information, while not guaranteed, has been secured from sources we believe to be reliable. This is not an offer to sell or lease and is subject to change or withdrawal. Any interested party should verify the status of the property and the information herein.