

# TULSA OFFICE SUITES FOR LEASE

2651 E 21 St.-  
Columbia Offices  
Tulsa, OK 74114

Cameron Greer  
Senior Associate  
918-527-3674  
Cam@danielsgreer.com

Amanda Duenner  
Senior Vice President  
918-740-1015  
Ag@danielsgreer.com



**DANIELS  
GREER**  
PROPERTIES, LLC

## TULSA OFFICE SUITES FOR LEASE

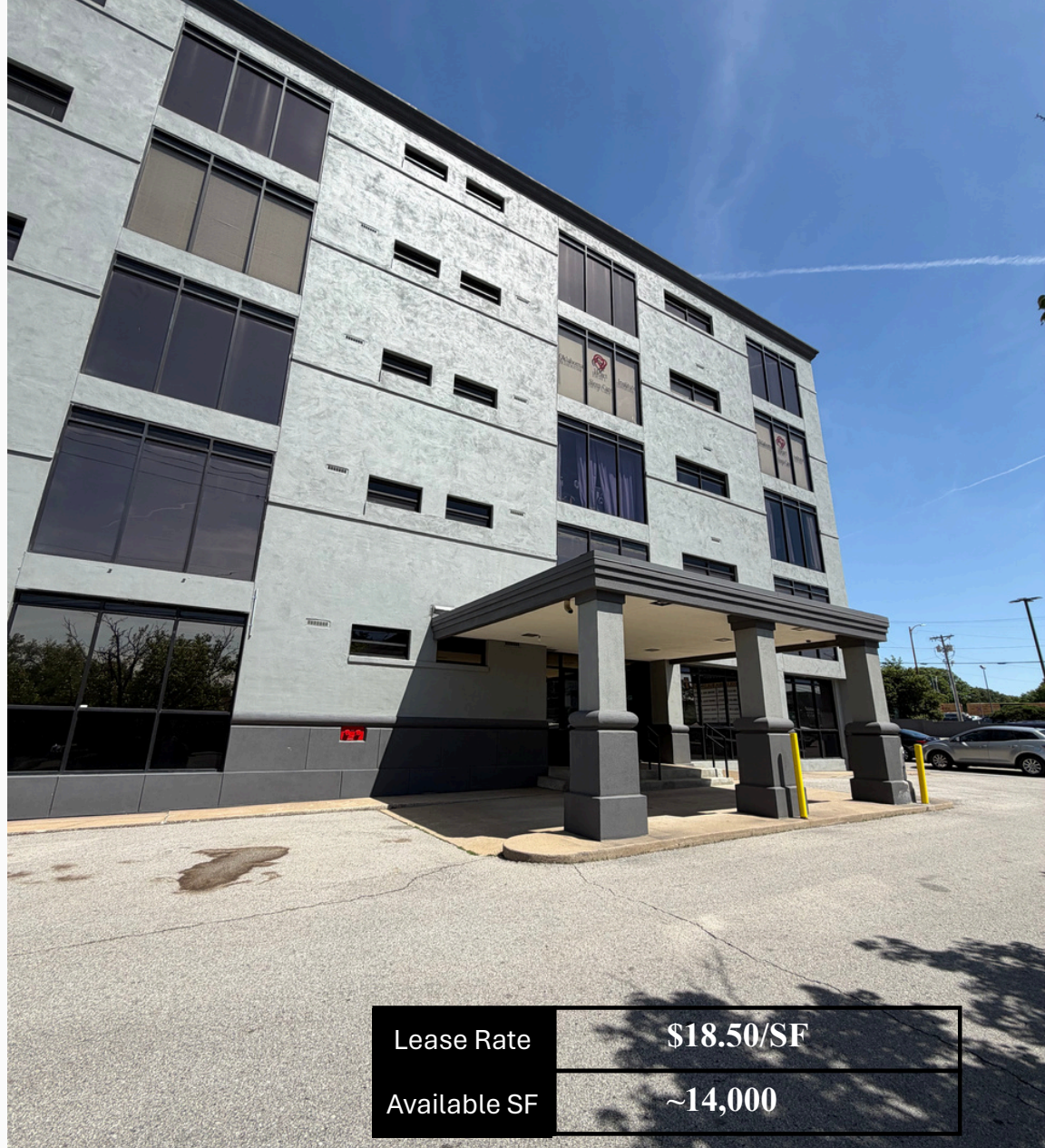
2651 E 21 St. -Columbia Offices,  
Tulsa, OK 74114

### Property Description

Remodeled in 2005, this property offers elegant finishes and quick access to Utica Square, Cherry Street, Pearl District, and Brookside. It also offers quick and direct access to the BA Expressway which ties into the rest of the Tulsa thoroughfare. This property features premium signage, and abundant parking.

### Property Highlights

- High-End Finishes
- Full-Service
- User Signage
- 90 Parking Spaces
- 11' Ceilings
- Restrooms on Each Floor
- Janitorial
- Storage Space
- After Hours Access
- Move-In Ready



Lease Rate

**\$18.50/SF**

Available SF

**~14,000**

# TULSA OFFICE SUITES FOR LEASE

2651 E 21 St. -Columbia Offices,  
Tulsa, OK 74114

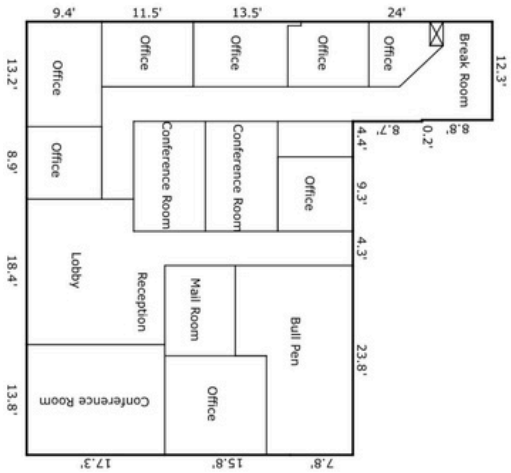
First Floor

## Space Description

Both sides of the lobby feature suites with high-end finishes such as crown molding, marble flooring, modern ceiling tiles, kitchen/break room, secured entry, bright lighting, and access from main lobby and parking lot. The suite on the west side of the building features a private main entrance into the suite with reception and waiting area.

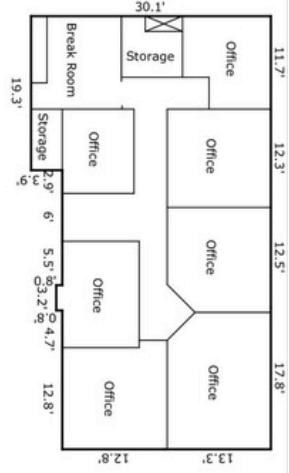


**Rentable Space (West Side of Lobby)**  
[2440.4 Sq ft]



**2,440 SF**

**Rentable Space (East Side of Lobby)**  
[1499.82 Sq ft]



**1,499 SF**

**TULSA OFFICE SUITES FOR LEASE**

2651 E 21 St. -Columbia Offices,  
Tulsa, OK 74114

**Additional First Floor  
Photos**



## TULSA OFFICE SUITES FOR LEASE

2651 E 21 St. -Columbia Offices,  
Tulsa, OK 74114

Second Floor

### Space Description

This \*4,103 SF suite features two entrances into the space from the common foyer. Among bright lighting and an abundance of windows, this suite also features a large open room that can be utilized for presentations/meetings/briefings, kitchen, bullpen, and 8 individual offices.



## TULSA OFFICE SUITES FOR LEASE

2651 E 21 St. -Columbia Offices,  
Tulsa, OK 74114

Second Floor

### Space Description

This \*965 SF suite features entrance off of elevator lobby. Inside is a large open room that is suited for a common area/meetings/briefings, 6 offices with one serving as a conference room, storage area, and high-end finishes with crown molding around the ceiling. Suite also features shared restrooms across from elevators.



## TULSA OFFICE SUITES FOR LEASE

2651 E 21 St. -Columbia Offices,  
Tulsa, OK 74114

Third Floor

### Space Description

This \*1,440 SF suite features a well-lit and bright professional environment. With an abundance of windows and lights, to the marble flooring and carpet. Suite consists of 5 individual offices, bullpen, and kitchen. Shared restrooms are also located across from the elevators.



Scan QR Code Below For A Virtual Tour



Scan this QR code to access the  
virtual tour

## TULSA OFFICE SUITES FOR LEASE

2651 E 21 St. -Columbia Offices,  
Tulsa, OK 74114

**Fifth Floor**

### Space Description

This \*2,054 SF suite features an abundant amount of light from overhead lights and massive floor to ceiling windows. This bright and open suite also features a conference room, full kitchen capability, and a receptionist area with high top counter and desk. On the same floor are shared restrooms which are located across from elevators.



Scan QR Code Below For A Virtual Tour



Scan this QR code to access the  
virtual tour

## TULSA OFFICE SUITES FOR LEASE

2651 E 21 St. -Columbia Offices,  
Tulsa, OK 74114

Fifth Floor

### Space Description

This \*1,398 SF suite features two entrances off of the common area. Both doors lead into an executive style suite with elegant wood trim and intricate carpet. Upon entry, you are greeted by well-lit offices and hallways through the suite along with a large foyer. This suite features 6 offices on the left side of the foyer and 6 offices on the right side of the foyer, along with a large kitchenette space.



Scan QR Code Below For A Virtual Tour

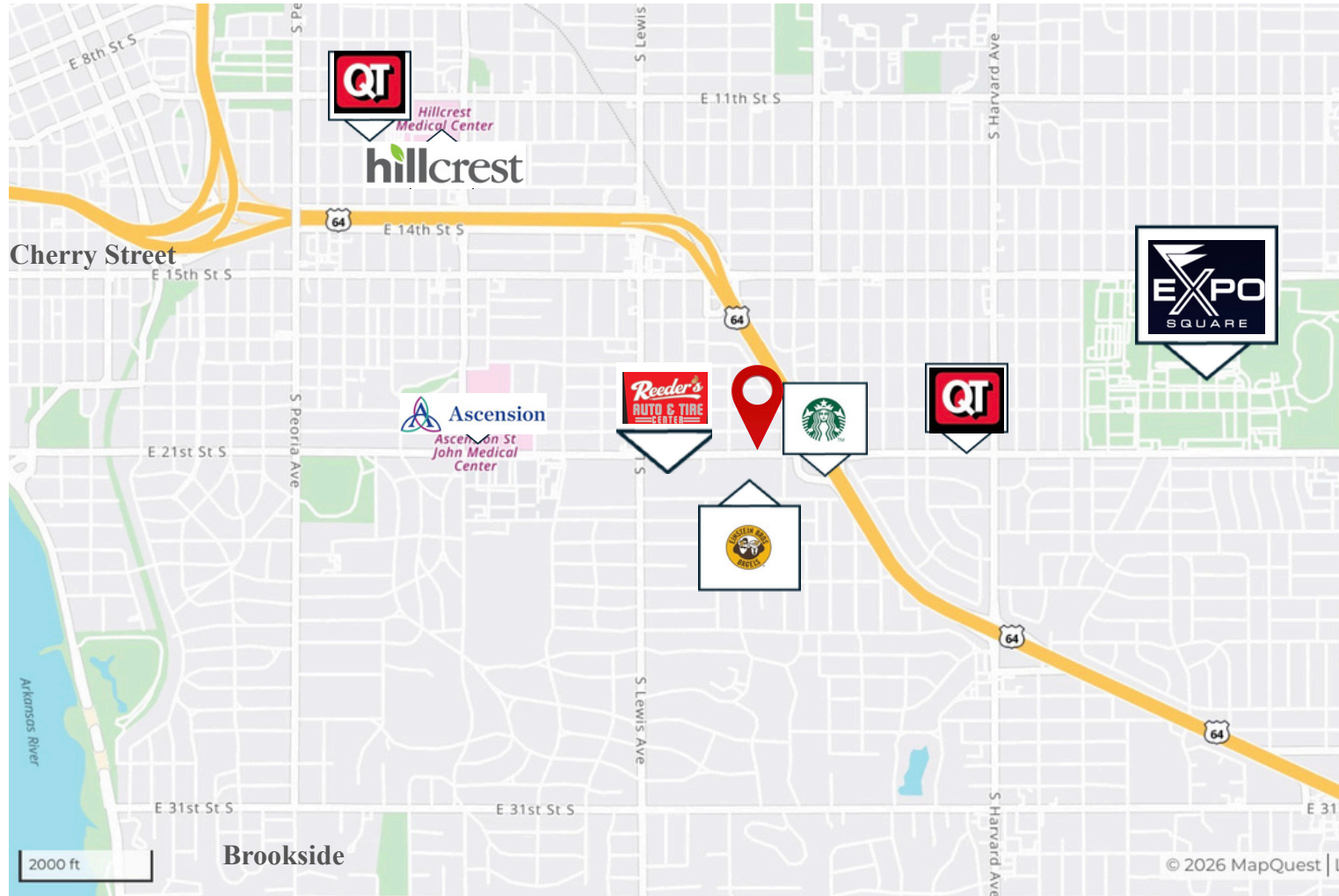


Scan this QR code to access the  
virtual tour

# TULSA OFFICE SUITES FOR LEASE

2651 E 21 St. -Columbia Offices,  
Tulsa, OK 74114

Location

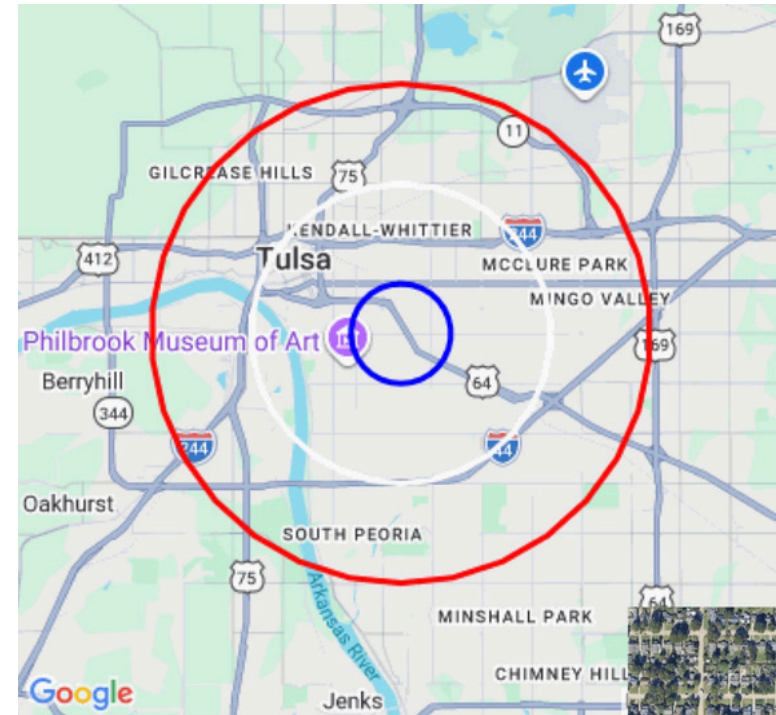
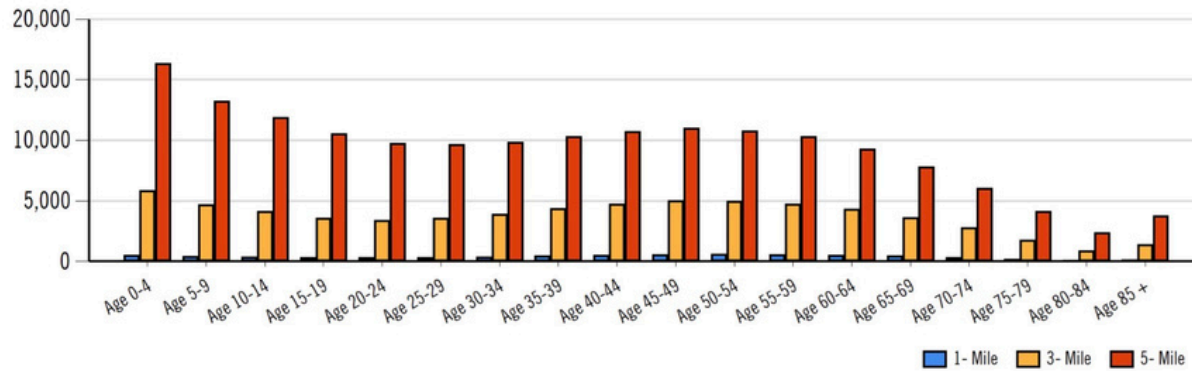


# TULSA OFFICE SUITES FOR LEASE

2651 E 21 St. -Columbia Offices,  
Tulsa, OK 74114

## Demographics

Population by Distance and Age (2020)



2651 E 21ST ST

### Population

Distance	Male	Female	Total
1- Mile	3,516	3,930	7,446
3- Mile	33,293	34,755	68,048
5- Mile	82,050	86,080	168,130

