

Covington Way I

2093-2099 Thomas Road • Memphis, TN 38134



Free-standing building with dock-high doors on the front and drive-in doors on the rear. Ideal for bulk deliveries and for local and regional service companies.

BUILDING AMENITIES

- 126,500 square foot industrial park
- Bays of 3,000 SF with up to 15,000 SF contiguous
- All bays have dock high and drive in doors
- 18 foot clear height; 22 feet at apex
- Conveniently located near I-40/240 interchange



All information deemed reliable but not warranted.

FOR INFORMATION CONTACT:

Roger McLemore

Vice President

901.507.3428

rmclemore@mrgmemphis.com

Makowsky Ringel Greenberg, LLC

1010 June Road, Suite 200

P.O. Box 241990

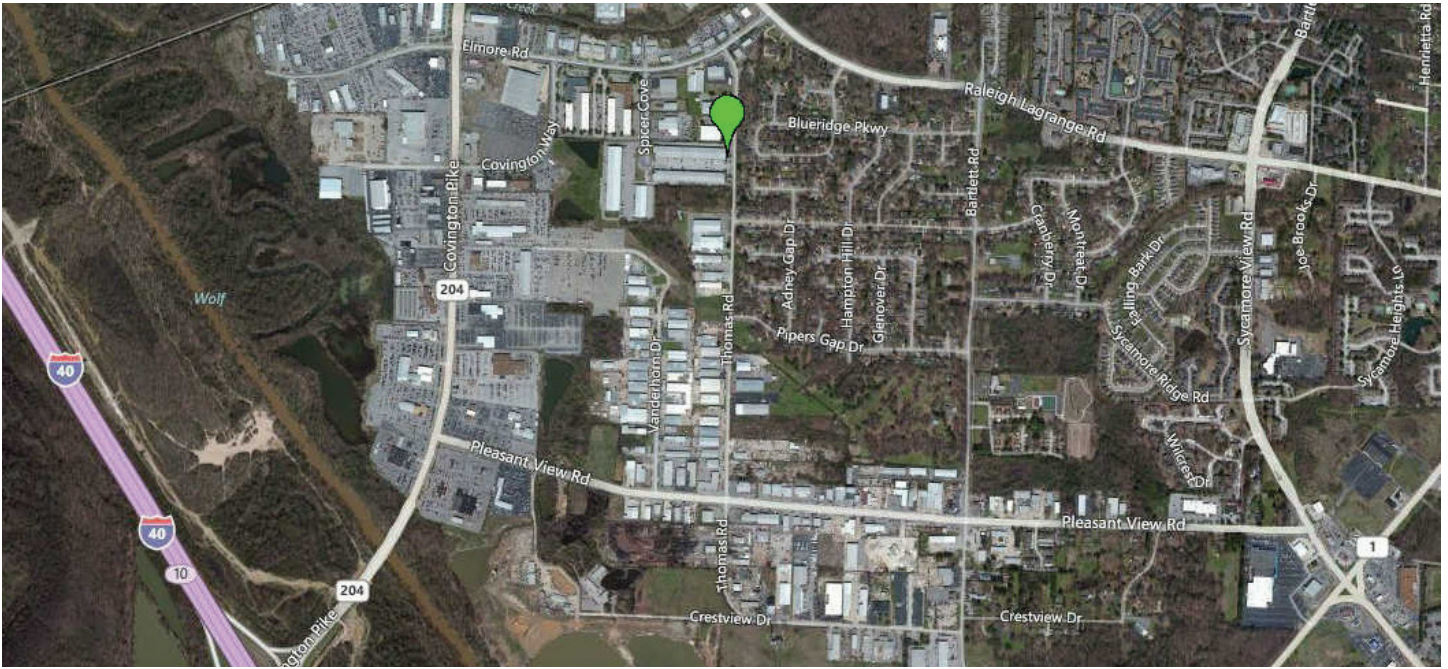
Memphis, TN 38124

Phone: 901.683.2220

Fax: 901.507.3440

www.mrgmemphis.com/commercial

Covington Way I



THOMAS ROAD			
2099		2093	
1			1
2			2
3			3
4			4
5			5
6			6
7			7
8			8
9			9
10			10
11			11
12			12
13			13
14			14
15			15
16			16
17			17
18			18
19			19
20			20
21			21
22			22
23			23

SPICER ROAD

FOR INFORMATION CONTACT:

Roger McLemore
 Vice President
 901.507.3428
 rmclemore@mrghmemphis.com

