



AVAILABLE GROUND LEASE

BANKSVILLE ROAD @ POTOMAC AVENUE

Pittsburgh, PA 15216

- 0.59 acres for ground lease
- Situated at the signalized corner of Banksville Road and Potomac Avenue
- Banksville Road is one of the main thoroughfares through the South Hills of Pittsburgh
- An average of 30,321 cars per day pass in front of the site
- Potomac Avenue connects Banksville Road to West Liberty Avenue
- Excellent demographics with $\pm 54,000$ households in a 10 minute drive time

HERKY POLLOCK

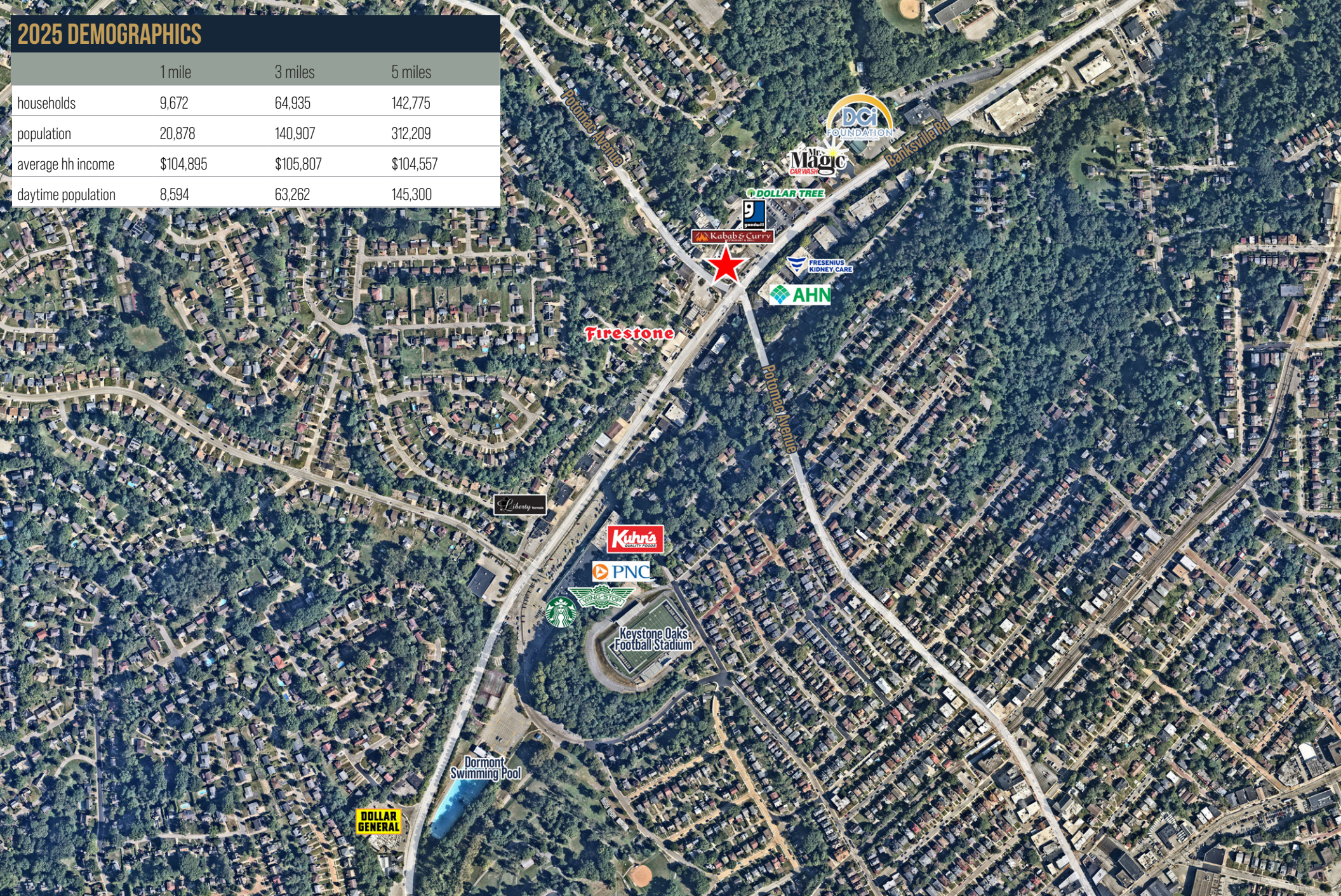
herky@legacyrealtypgh.com

412.866.LGCY (5429)

LEGACY
REALTY PARTNERS

2025 DEMOGRAPHICS

	1 mile	3 miles	5 miles
households	9,672	64,935	142,775
population	20,878	140,907	312,209
average hh income	\$104,895	\$105,807	\$104,557
daytime population	8,594	63,262	145,300



© 2024 Legacy Realty Partners. All rights reserved. The information provided has been obtained from sources deemed reliable but has not been verified for accuracy or completeness. It is recommended that you conduct a thorough, independent investigation of the property and verify all details. Any reliance on this information is at your own risk. Legacy Realty Partners and the Legacy Realty Partners logo are trademarks of Legacy Realty Partners, Inc. All other trademarks displayed in this document belong to their respective owners, and the use of these logos does not imply any affiliation with or endorsement by Legacy Realty Partners. The photos contained herein are the property of their respective owners. Unauthorized use of these images is prohibited without the explicit written consent of the owner.