

AVAILABLE FOR LEASE
OFFICE SPACE | 2,688± SF

760 N. I STREET

MADERA, CA



NEWMARK
PEARSON COMMERCIAL

Phil Souza
Senior Vice President - Office Division
t 559-447-6283
psouza@pearsonrealty.com
CA RE Lic. #00853867

Nick Sorensen
Vice President - Office Division
t 559-447-6240
nsorensen@pearsonrealty.com
CA RE Lic. #02081137

Independently Owned and Operated | Corporate License #00020875 | newmarkpearson.com

FRESNO OFFICE: 7480 N. Palm Ave. #101, Fresno, CA 93711, t 559-432-6200 | **VISALIA OFFICE:** 3447 S. Demaree St., Visalia, CA 93277, t 559-732-7300

The distributor of this communication is performing acts for which a real estate license is required. The information contained herein has been obtained from sources deemed reliable but has not been verified and no guarantee, warranty or representation, either express or implied, is made with respect to such information. Terms of sale or lease and availability are subject to change or withdrawal without notice.

760 N. I STREET
MADERA, CA

PROPERTY
INFORMATION

Availability: Suite 108 | 2,688± SF
Lease Rate: \$1.50 PSF / Monthly | NNN
Tenant Improvements: Negotiable
Parking Ratio: 4.50/1,000± SF

PROPERTY DESCRIPTION

The subject space is located in a modern professional building in the heart of Madera with easy access to Freeway 99. The building provides excellent signing exposure. All ancillary services are in close proximity.

HIGHLIGHTS

- Close Proximity to Highway 99
- Class A finishes
- Ancillary Services Nearby
- Newer Building in Madera, CA
- Owner On-Site

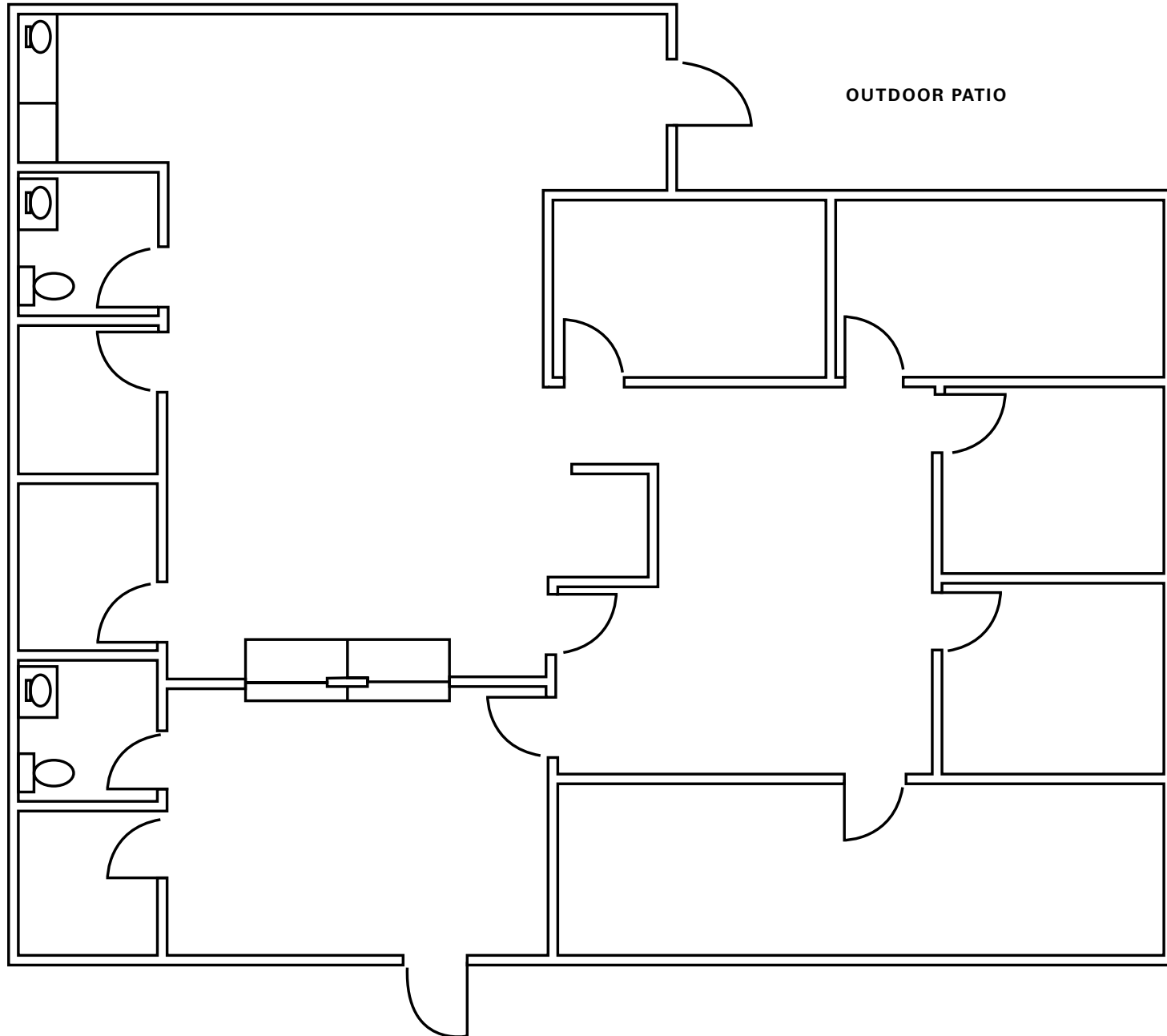


\$1.50 PSF / Monthly
LEASE RATE

NNN
LEASE TYPE

760 N. I STREET
MADERA, CA

FLOOR
PLAN



760 N. I STREET
MADERA, CA

INTERIOR
IMAGES





AVAILABLE FOR LEASE
OFFICE SPACE | 2,688± SF

760 N. I STREET

MADERA, CA

For information, please contact:

Phil Souza

Senior Vice President - Office Division

t 559-447-6283

psouza@pearsonrealty.com

CA RE Lic. #00853867

Nick Sorensen

Vice President - Office Division

t 559-447-6240

nsorensen@pearsonrealty.com

CA RE Lic. #02081137

NEWMARK
PEARSON COMMERCIAL

Independently Owned and Operated
Corporate License #00020875
newmarkpearson.com

FRESNO OFFICE
7480 N. Palm Ave. #101
Fresno, CA 93711
t 559-432-6200

VISALIA OFFICE
3447 S. Demaree St.
Visalia, CA 93277
t 559-732-7300

The distributor of this communication is performing acts for which a real estate license is required. The information contained herein has been obtained from sources deemed reliable but has not been verified and no guarantee, warranty or representation, either express or implied, is made with respect to such information. Terms of sale or lease and availability are subject to change or withdrawal without notice.