

31492 GLENDALE STREET
LIVONIA, MICHIGAN

INDUSTRIAL FOR LEASE
11,660 Square Feet Available



**SIGNATURE
ASSOCIATES**
KNOW SIGNATURE | KNOW RESULTS



PROPERTY FEATURES

- 11,660 square feet available
- 2,125 square foot office and 9,535 square foot shop
- 16' clear height
- (1) truckwell and (1) 12' x 14' grade level door
- Zoned light industrial
- 400 amps, 208 volts, 3-phase power
- 32 car parking
- Great location in Class "A" Industrial Park and ½ Mile to I-96 at Merriman Road
- Building features include deluxe office area, painted warehouse and energy efficient lighting
- Lease Rate: \$8.85/sq. ft. NNN



For more information, please contact:

GARY SALLEN
(248) 948 0105
gsallen@signatureassociates.com

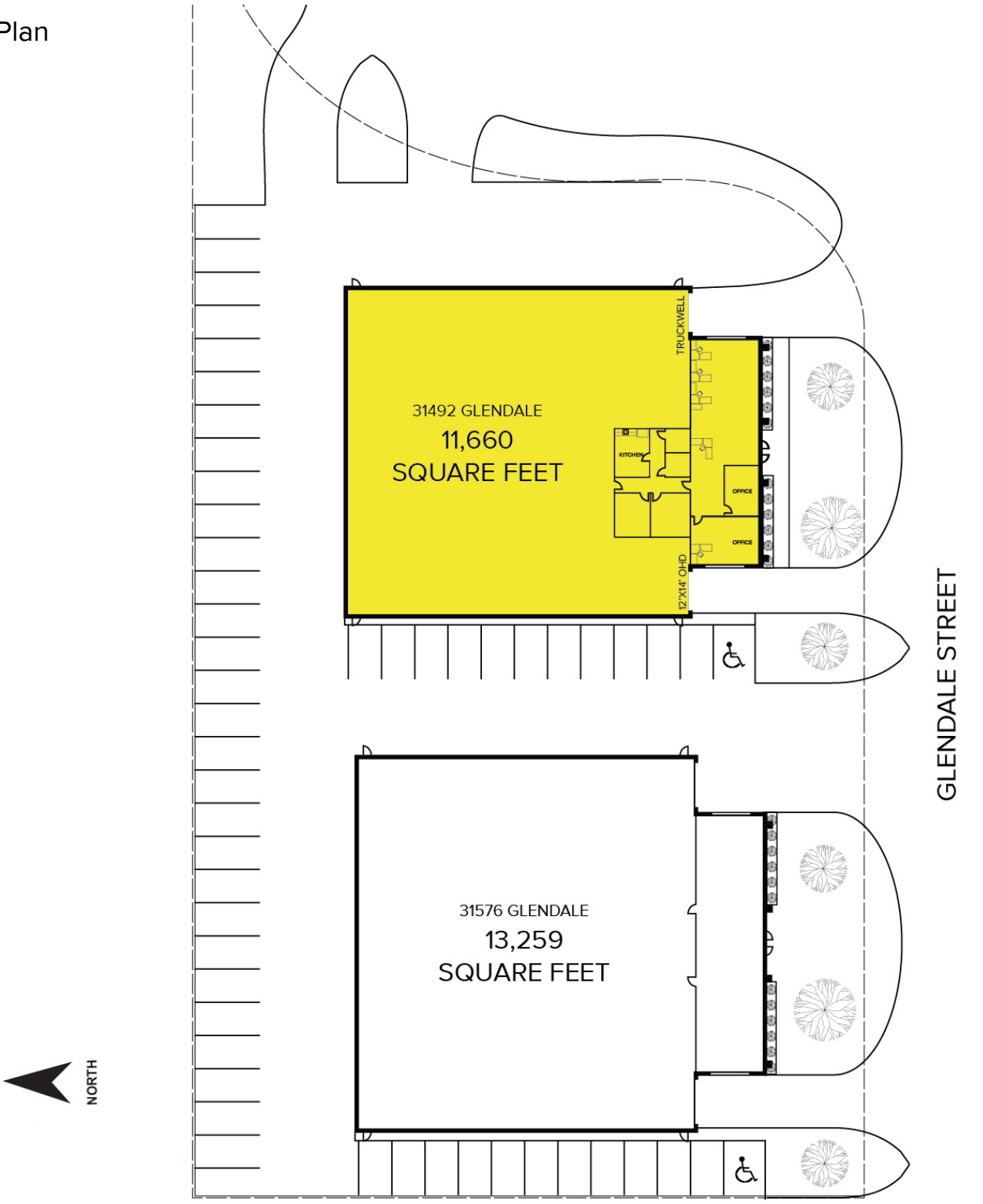
SIGNATURE ASSOCIATES
One Towne Square, Suite 1200
Southfield, MI 48076
www.signatureassociates.com

31492 Glendale Street - Livonia, Michigan

Industrial For Lease

11,660
Square Feet
AVAILABLE

Site Plan

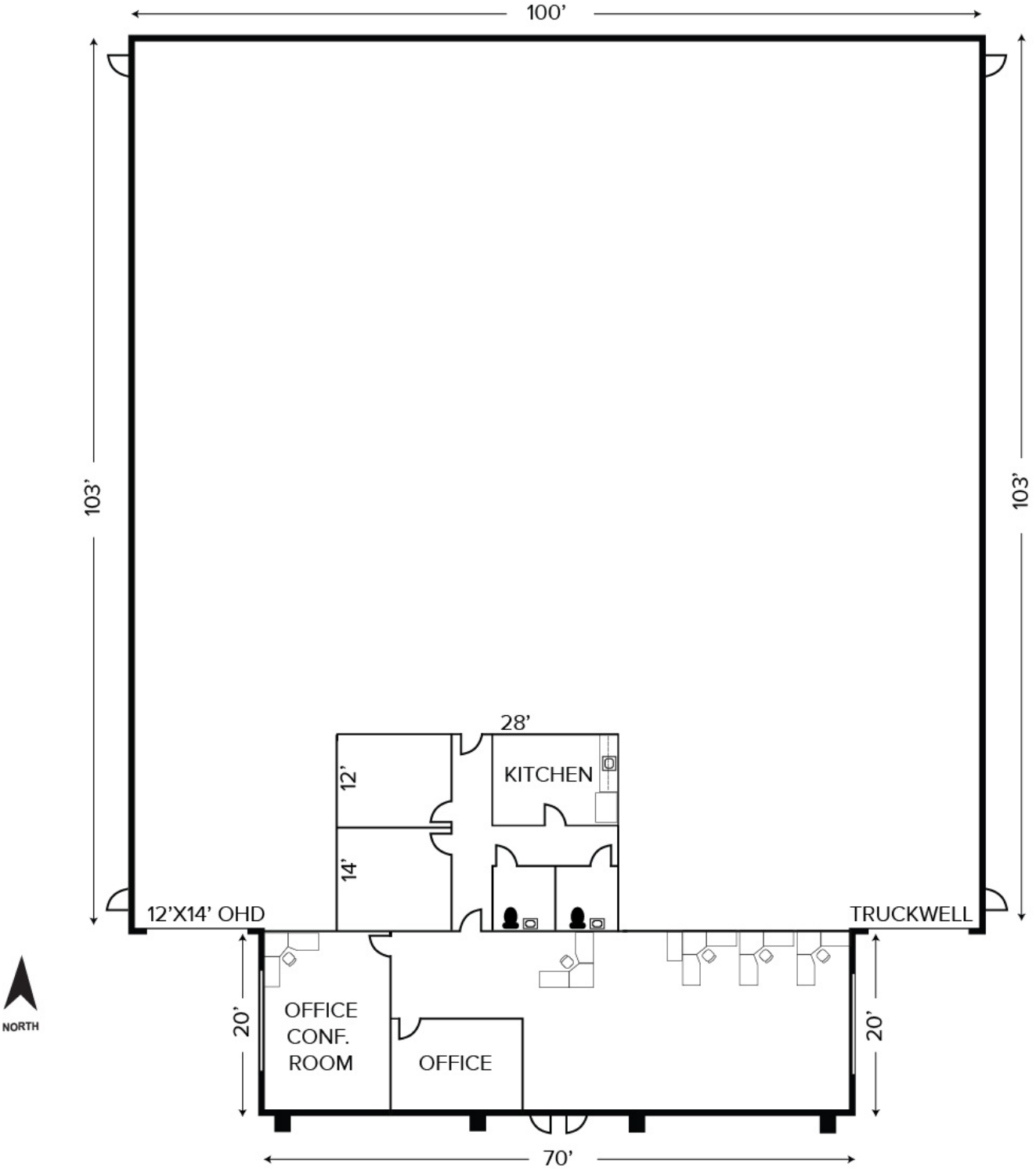


* Work stations are illustrated for space plan purposes only and not included with the building

For more information, please contact:
GARY SALLEN
(248) 948 0105
gsallen@signatureassociates.com

SIGNATURE ASSOCIATES
One Towne Square, Suite 1200
Southfield, MI 48076
www.signatureassociates.com

Floor Plan



* Work stations are illustrated for space plan purposes only and not included with the building

For more information, please contact:
GARY SALLEN
(248) 948 0105
gsallen@signatureassociates.com

SIGNATURE ASSOCIATES
One Towne Square, Suite 1200
Southfield, MI 48076
www.signatureassociates.com

31492 Glendale - Livonia, Michigan

Industrial For Lease

11,660
Square Feet
AVAILABLE

Aerial



For more information, please contact:

GARY SALLEN
(248) 948 0105
gsallen@signatureassociates.com

SIGNATURE ASSOCIATES
One Towne Square, Suite 1200
Southfield, MI 48076
www.signatureassociates.com