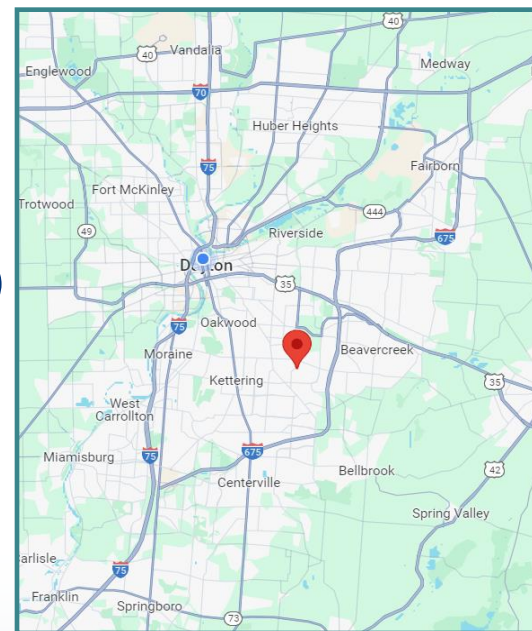




Woodman Place Shopping Center

3050-3128 Woodman Drive
Kettering, Ohio 45420

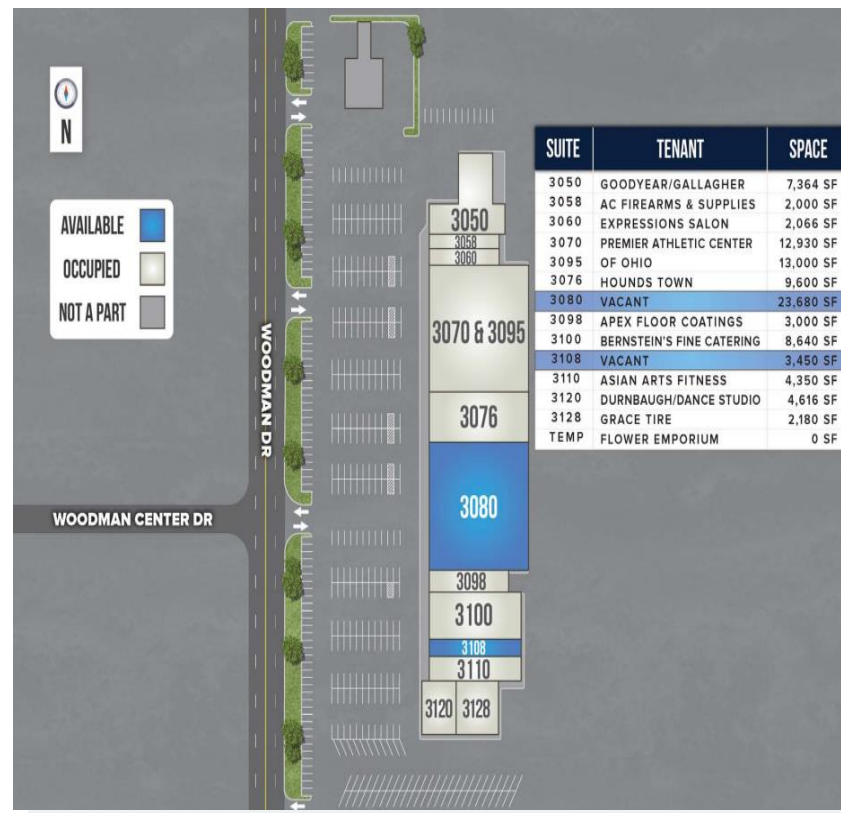
- .96,876 sf Shopping center located in the Heart of Kettering
- High Traffic Counts on Dorothy Lane and Woodman Drive intersection with over 42,000 cpd!
- Below Market Rates!
- Pylon Signage Available
- 23,680 sf available (former Empire Furniture)
- 3,450 sf available (former Library Cocktail Lounge)
- Leasing \$7.00-\$10.00 psf + \$2.47 NNN



Contact:

Tracey Herron
937.216.4636 MOBILE
therron@equity.net

Equity LLC | O: 937.291.1179 | F: 937.291.1547 | www.equity.net
11 West Monument Avenue, Suite 506 | Dayton, OH 45402



Former Empire Furniture 23,680 SF



Former Library Cocktail Lounge

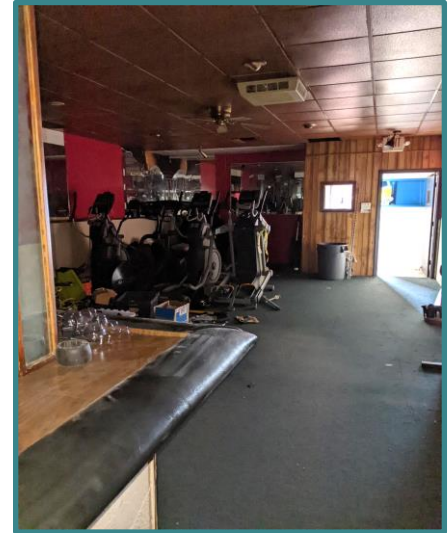


Equity LLC | O: 937.291.1179 | F: 937.291.1547 | www.equity.net
 11 West Monument Avenue, Suite 506 | Dayton, OH 45402

The information contained herein has been obtained from the property owner or other sources that we deem reliable. Although we have no reason to doubt its accuracy, no representation or warranty is made regarding the information, and the property is offered "as is". The submission may be modified or withdrawn at any time by the property owner.



Equity LLC | O: 937.291.1179 | F: 937.291.1547 | www.equity.net
11 West Monument Avenue, Suite 506 | Dayton, OH 45402



DEMOGRAPHICS	1 Mile	3 Miles	5 Miles
Population	10,245	89,064	211,616
Average HH Income	\$94,719	\$113,818	\$118,002
Daytime Population	4,606	41,569	106,821

Equity LLC | O: 937.291.1179 | F: 937.291.1547 | www.equity.net
11 West Monument Avenue, Suite 506 | Dayton, OH 45402