

NOTE: Bearings shown hereon are based on the Texas Coordinate System, determined by GPS observations.
NOTE: This boundary survey completed without the benefit of a current title commitment. There could be easements which affect this property that are not shown hereon.

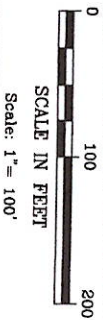
2424 Oak Street
Abilene, Texas 79601

I hereby certify this to be a correct plat showing the location of the improvements situated upon Lot 120, a replat of part of Block 20, Bowyer Subdivision of parts of the Northeast, Southeast and Southwest quarters of Survey 50 of Blind Asylum Lands, Abilene, Taylor County, Texas, according to the map or plat thereof recorded in Cabinet 2, Slide 340-A, Plat Records of Taylor County, Texas.
Surveyed on the ground August 4, 2025.

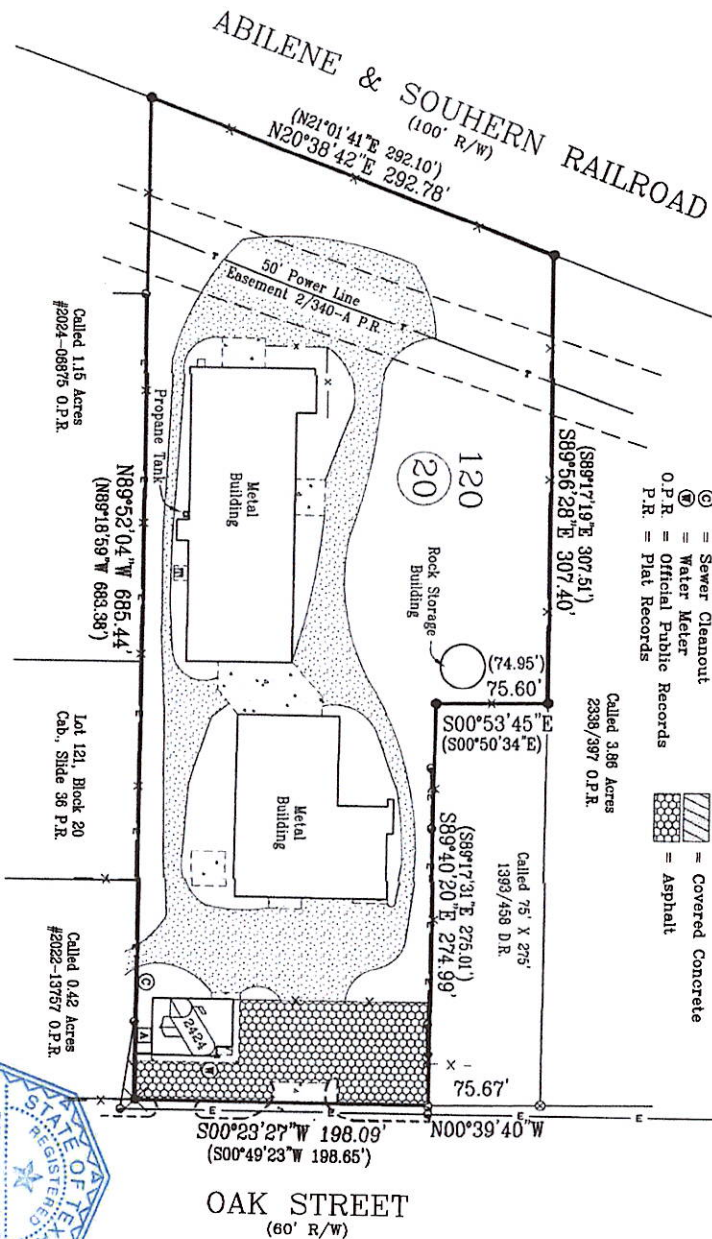
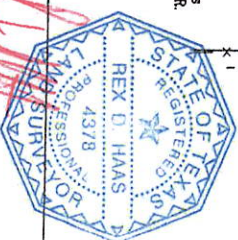
There are no visible or apparent protrusions or overlapping of improvements upon or off this property other than shown. (Fences are not entirely upon property lines.)

GEOTEX PROPERTY SOLUTIONS, LLC
4701 South 3rd Street
Abilene, Texas 79605
325-677-6712
Firm Registration No. 10194134

File No: 22-60-25
File Name: 2424 Oak Street
Location: X:\ABILENE\2025\
Geotex Property Solutions
© 2025 All Rights Reserved HE/RH
Drawn by:



Rex D. Haas
RPLS #4378



- Legend
- ⊙ = Found 3/8" rebar
 - ⊙ = Found "v" in Concrete
 - ⊙ = Found 1/2" rebar
 - ⊙ = Found 5/8" rebar
 - x- = Fence
 - () = Recorded Call
 - U.E. = Utility Easement
 - B.L. = Building Setback Line
 - R/W = Right of Way
 - ⊙ = Sewer Cleanout
 - ⊙ = Water Meter
 - O.P.R. = Official Public Records
 - P.R. = Plat Records
 - ⊠ = Transformer
 - ⊠ = A/C Unit
 - ⊙ = Power Pole
 - E- = Overhead Power Line
 - T- = Down Guy and Anchor
 - T- = Transmission Line
 - ▨ = Gravel
 - ▨ = Concrete
 - ▨ = Covered Concrete
 - ▨ = Asphalt