



OFFICE SPACE AVAILABLE IN CLASS A BUILDING

40 CUTTERMILL ROAD GREAT NECK, NEW YORK



ROZITA SOOMEKH

LICENSED REAL ESTATE BROKER

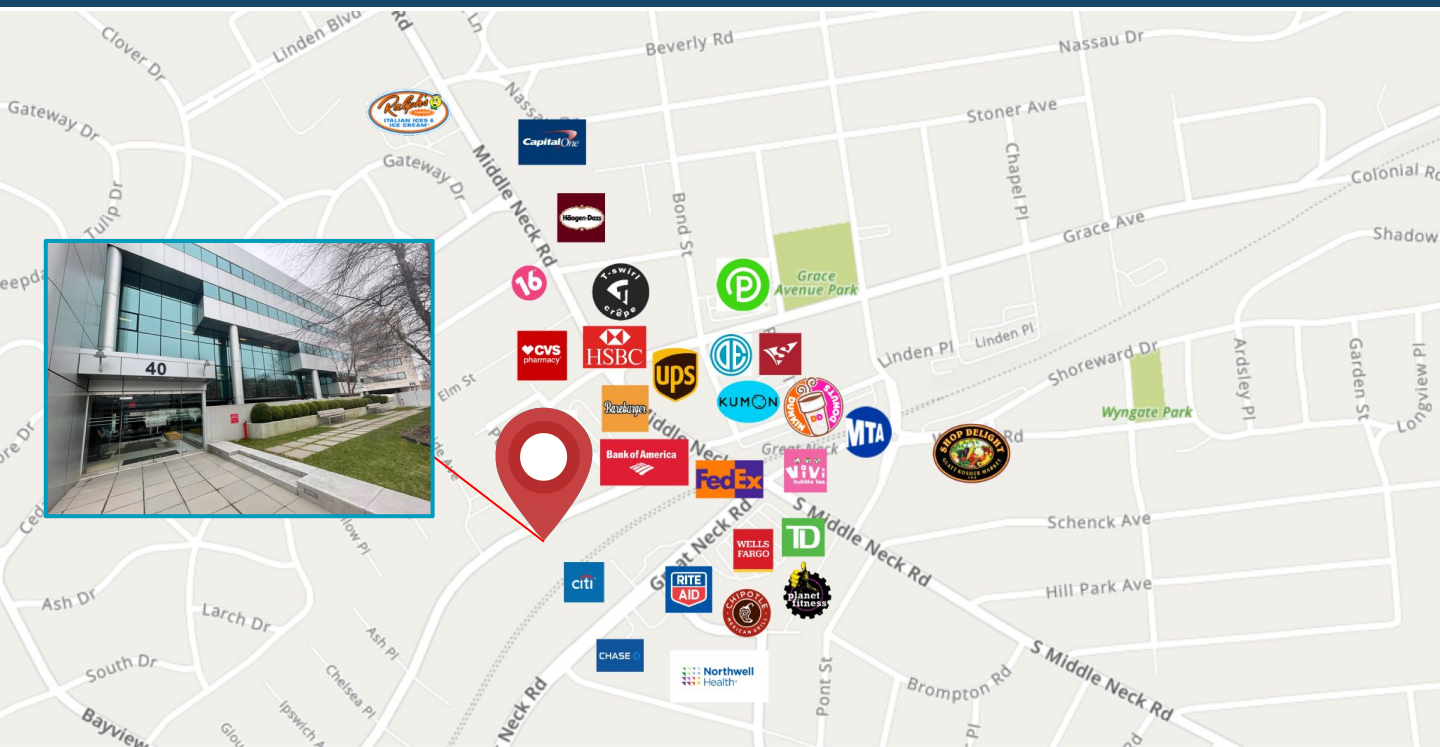
516.205.2279



Exceptional Multi A+ Class Office Building

- Brand New Parking Lot and Courtyard
- State-of-the-Art Renovated Lobby and Modern Elevators
- Dedicated On-Site Management Team
- 24-Hour Security Surveillance Ensuring Safety
- Exclusive Opportunity: Only One Office Space Available

Do not miss this unparalleled opportunity to secure a position in one of the most prestigious buildings in the area. This space offers an elite professional environment, perfect for businesses seeking top-tier amenities and a prime location.



OTHER NOTABLE BUSINESSES IN THE AREA



STRATEGICALLY LOCATED NEAR THE LIRR STATION, APPROX. 20 MIN. RIDE TO MANHATTAN, AND CLOSE TO ALL EATERIES, CAFES, BANKS, AND PUBLIC TRANSPORT. ALL TENANTS HAVE 24/7 ACCESS TO THE BUILDING. A BUILDING TRULY UNMATCHED IN QUALITY AND EMINENCE, CONTACT TODAY. IT WILL BE AVAILABLE FROM 1/1/2025

DouglasElliman

THE ROZITA SOOMEKH TEAM
at Douglas Elliman Real Estate

ROZITA SOOMEKH

Licensed Real Estate Broker

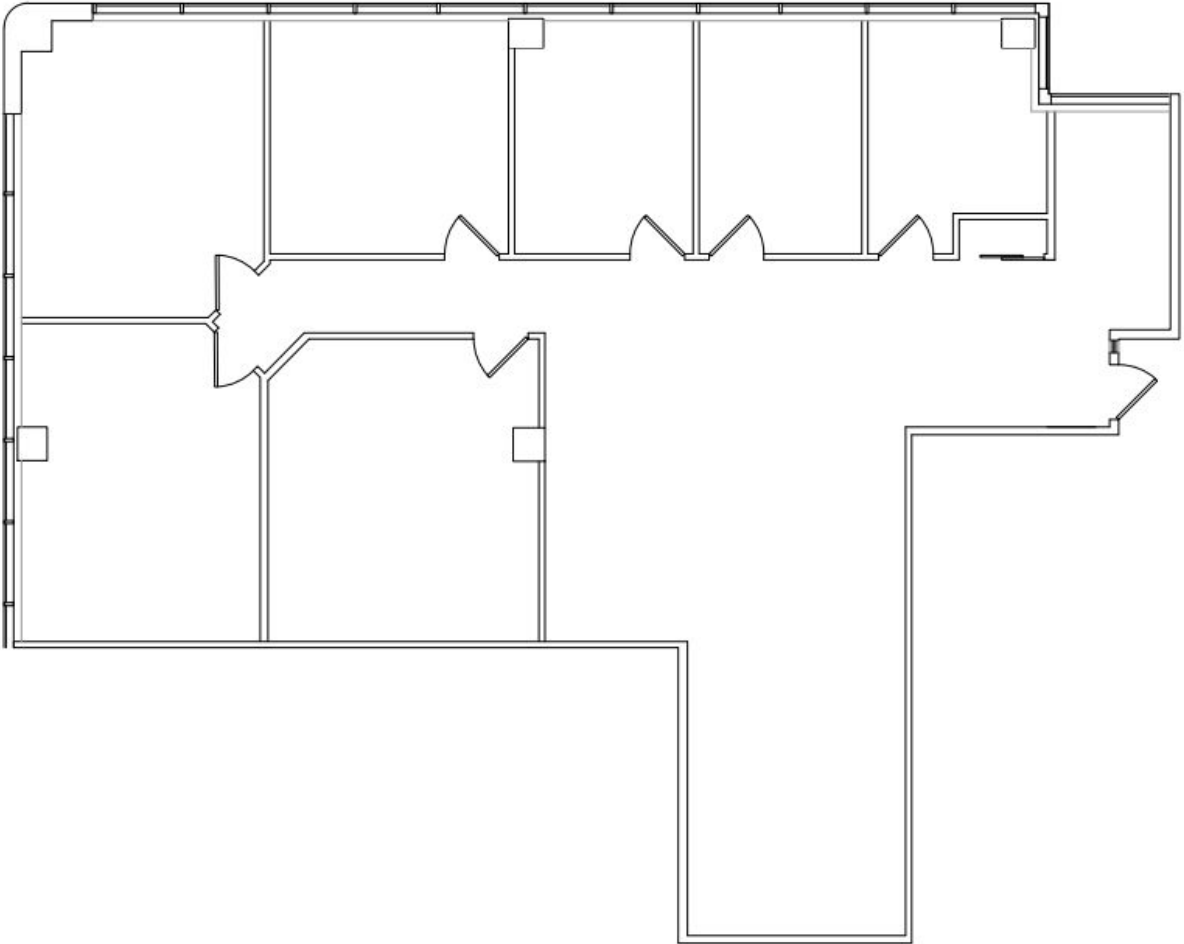
Rozita.Soomekh@elliman.com

516.205.2279



SUITE 203

3,360 RSF



DouglasElliman

THE
**ROZITA
SOOMEKH**
TEAM
of Douglas Elliman
Real Estate



ROZITA SOOMEKH

Licensed Real Estate Broker

Rozita.Soomekh@elliman.com

516.205.2279



ELEVATORS - LOBBY - PARKING



 Douglas Elliman

 THE
**ROZITA
SOOMEKH**
TEAM at Douglas Elliman
Real Estate

ROZITA SOOMEKH

Licensed Real Estate Broker

Rozita.Soomekh@elliman.com

516.205.2279



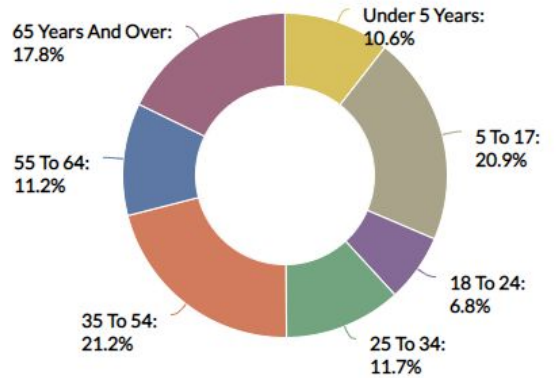
GREAT NECK

NEW YORK



Great Neck is a region on Long Island, New York, that covers a peninsula on the North Shore and includes 9 villages, such as the villages of Great Neck, Great Neck Estates, Great Neck Plaza, Kings Point, and Russell Gardens, and a number of unincorporated areas, as well as an area south of the peninsula near Lake Success and the border territory of Queens.

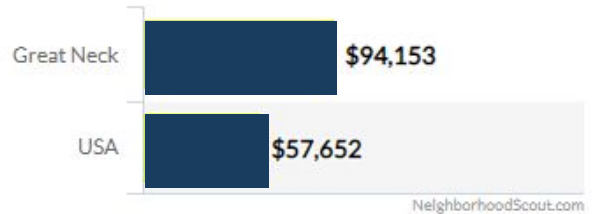
Age Demographic



TOTAL POPULATION

±10,000

MEDIAN HOUSEHOLD INCOME



THE ROZITA SOOMEKH TEAM
at Douglas Elliman
Real Estate



CONTACT US

