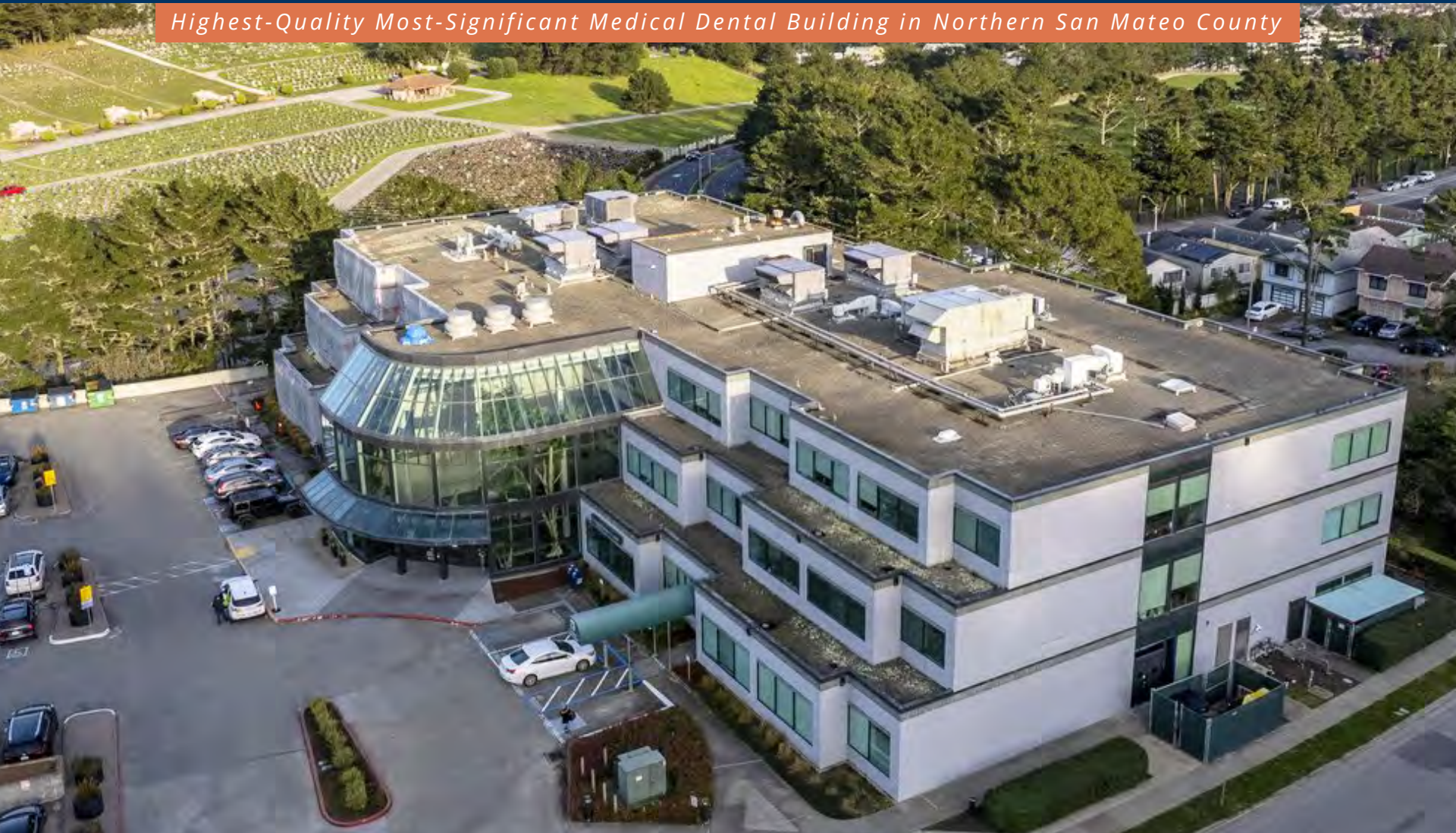


BAYSIDE REALTY PARTNERS PRESENTS

Physicians Medical Center

901 Campus Drive, Daly City

Highest-Quality Most-Significant Medical Dental Building in Northern San Mateo County



TRASK LEONARD
President and CEO
650.533.2591
tleonard@baysiderp.com
DRE#01152101



GRACE LINDBERG
Vice President
415.307.0252
glindberg@baysiderp.com
DRE#02230832

Physicians Medical Center

901 Campus Drive, Daly City

LOCATION

- Excellent accessibility to Hwy 280 (at Hickey Blvd), SR 35 and SR 1 and Colma BART Station
- 1 mile from Seton Medical Center, area's primary hospital
- Convenient location with parking for San Francisco residents—5 minute drive to border of San Francisco
- Large parking field, including covered parking, with a ratio of approximately 4.45 spaces per 1,000 sf



BUILDING

- Significant primary care presence by *Palo Alto Medical Foundation (PAMF)*
- Longstanding active surgery center, *Campus Surgery Center*, on ground floor
- On-site pharmacy
- Monument signage opportunity
- Attractive atrium lobby
- On-site building engineer
- Upgraded common areas

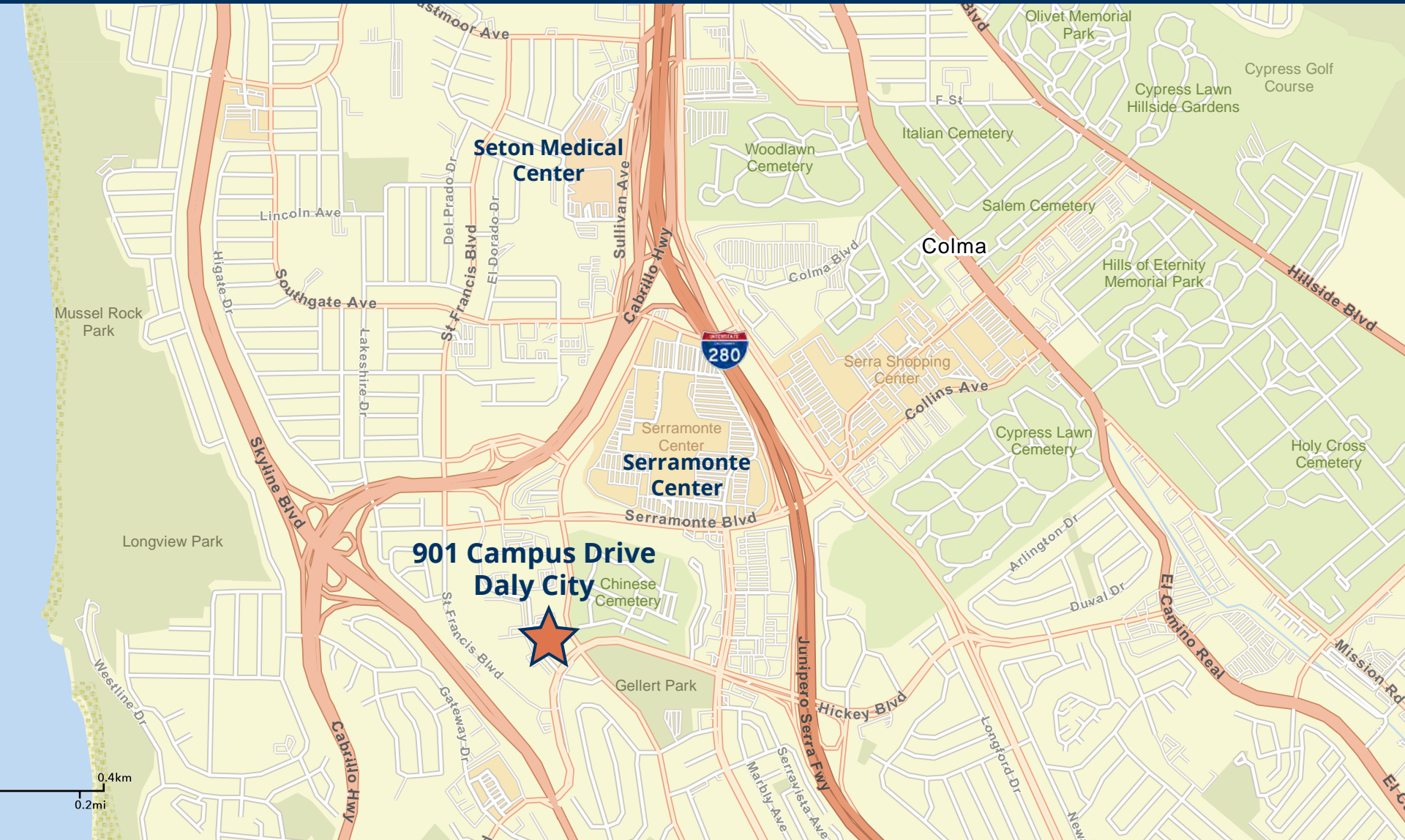
Physicians Medical Center

901 Campus Drive, Daly City



Physicians Medical Center

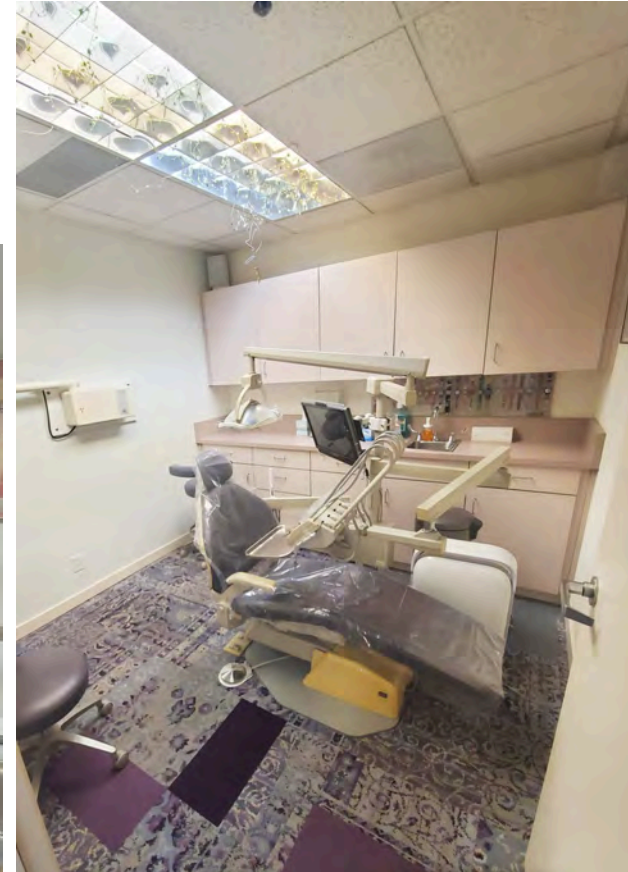
901 Campus Drive, Daly City



Physicians Medical Center

901 Campus Drive, Daly City

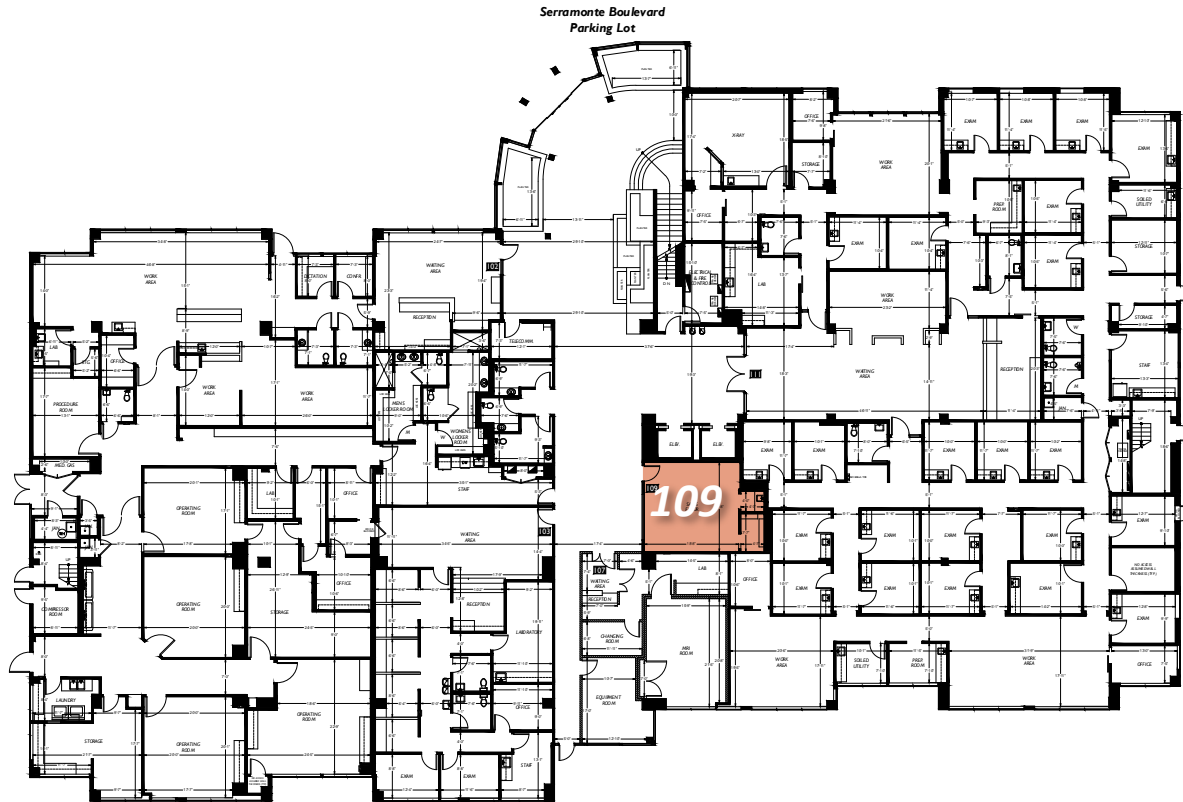
**Fully built-out
modern dental suite with
two operatories and
equipment available**



**Very well located
and visible suite
just off elevator lobby
with excellent natural light**

Physicians Medical Center

901 Campus Drive, Daly City



FIRST FLOOR

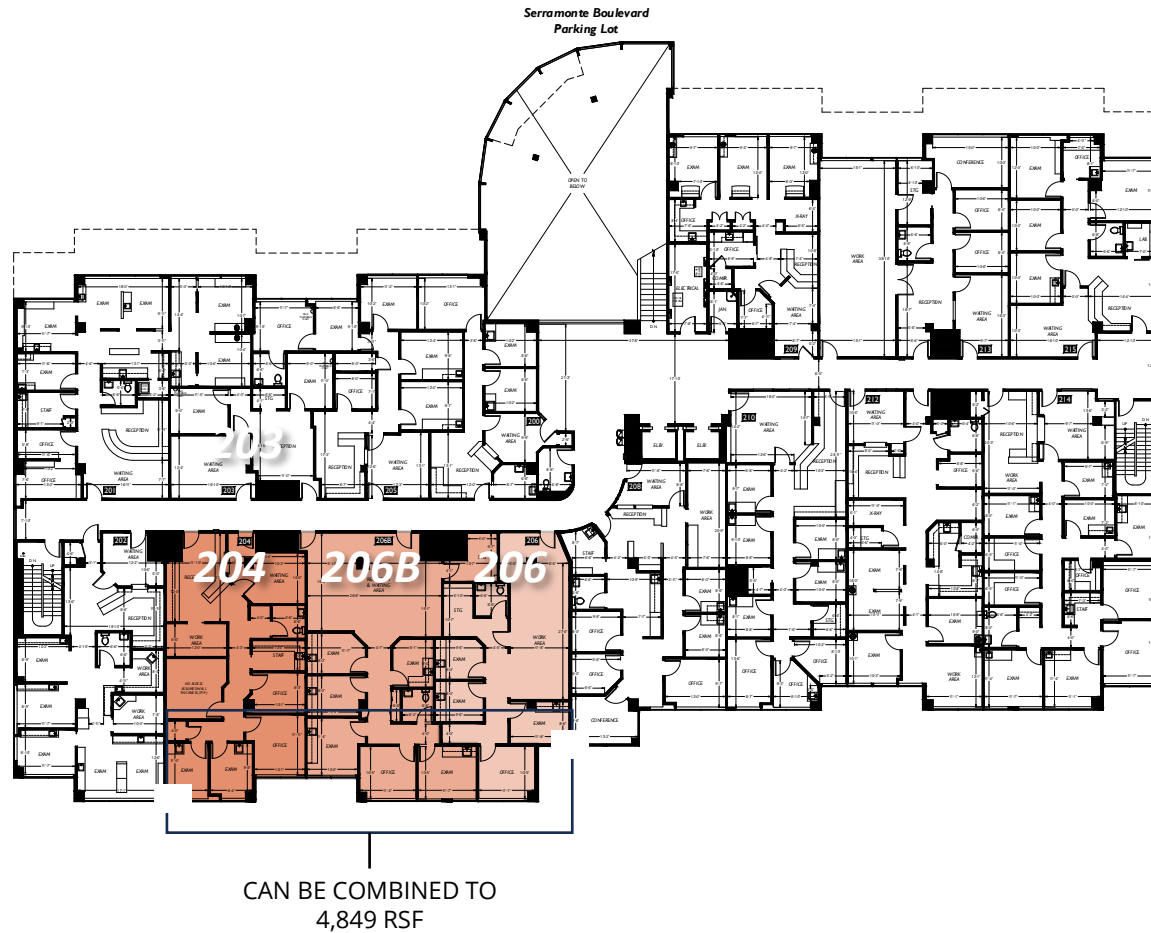
Suite 109

454 RSF

Prominent and visible ground floor location. Space with storage. Suitable for retail, medical or dental

Physicians Medical Center

901 Campus Drive, Daly City



SECOND FLOOR

Suite 204 1,679 RSF
2 exam rooms, 2 offices, reception/waiting area, staff, work area, restroom
Available March 1, 2026

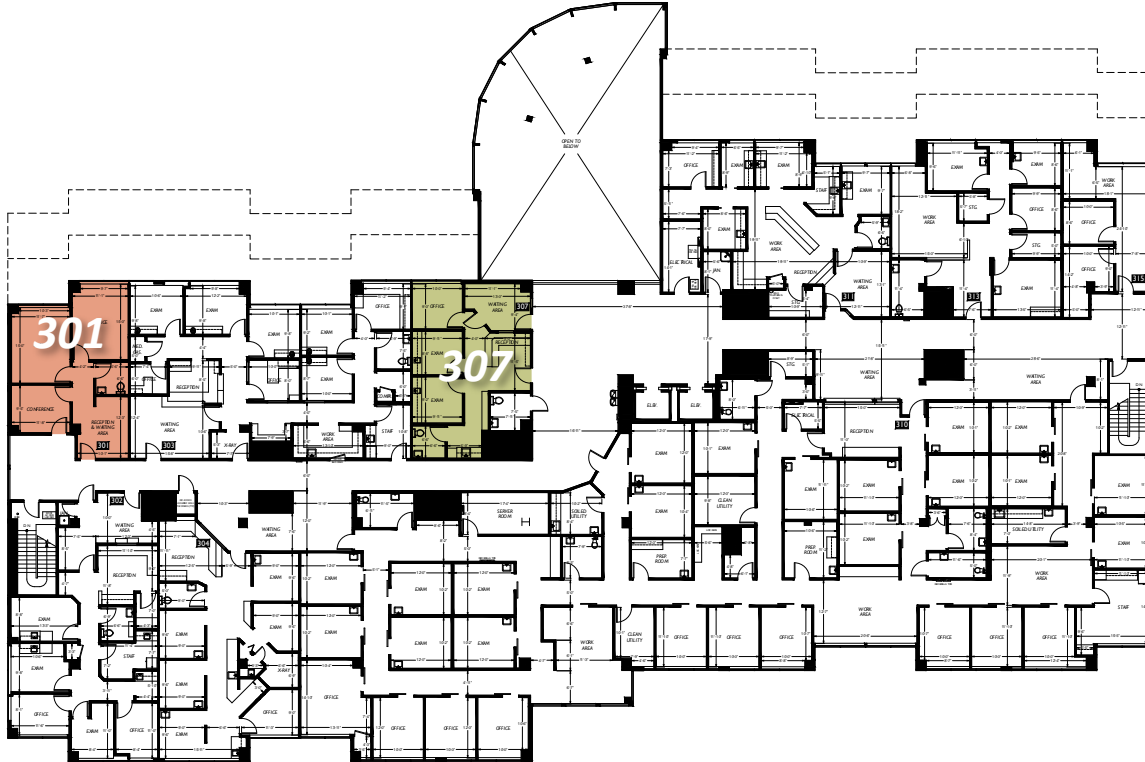
Suite 206B 1,824 RSF
5 exam rooms, 1 office, large open reception/waiting area, storage, restroom
Available Jan 1, 2026

Suite 206 1,346 RSF
3 exam rooms, 1 office, large open area, storage, restroom
Available Feb 1, 2026

Suites 204, 206B, 206 COMBINED 4,849 RSF
10 exam rooms, 4 offices, 3 restrooms, open work areas

Physicians Medical Center

901 Campus Drive, Daly City



THIRD FLOOR

Suite 307 867 RSF

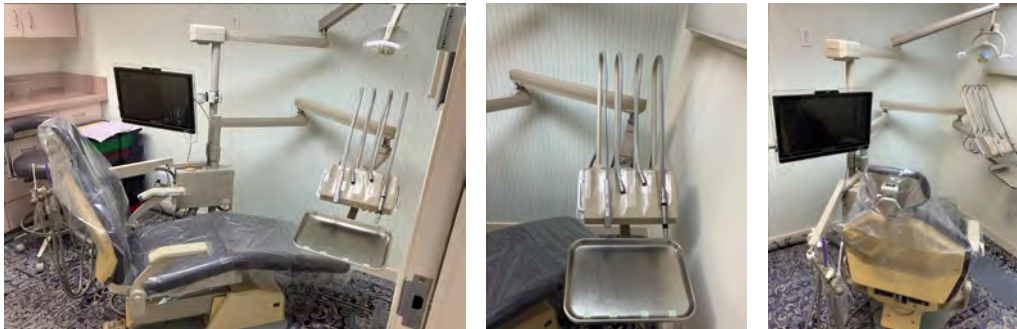
2 operatories, 1 office, 1 lab area, 1 restroom.

Very well located and visible suite just off elevator lobby with excellent natural light. Fully built-out modern dental suite with two operatories and equipment available
2 dental chairs and related equipment available for free as part of a lease

Suite 301 873 RSF

Reception area with 2 exam rooms, 1 private office, restroom. Good natural light

Suite 307 -- Two dental chairs and related equipment available for free as part of a lease



Meet Your Expert Team



TRASK LEONARD

President and CEO

650.533.2591

tleonard@baysiderp.com

DRE#01152101



GRACE LINDBERG

Vice President

415.307.0252

glindberg@baysiderp.com

DRE#02230832

BAYSIDE REALTY PARTNERS

The preeminent provider of management, leasing, construction management and accounting services for healthcare properties.



MARKET LEADER

- Leasing & Property Management
- Investment Sales
- Tenant Representation
- Construction Management
- Property Repositioning



INFLUENTIAL NETWORK

- Institutional Investors
- Healthcare Systems and Healthcare Districts
- Physicians & Districts
- Private Investors



DOMINANT FOOTPRINT

- 2 million SF leased & managed
 - 50+ MOB portfolio
 - 10,000-240,000 SF
 - 500,000 SF portfolio
- San Francisco's largest MOBs
- 950+ leases executed
- 500+ medical and dental tenants

DOMINANT. EXPERT. INFLUENTIAL.