



23

GRAND STREET

23

GRAND STREET SOHO/TRIBECA, NYC

Corner of Grand Street & Sixth Avenue

RESTAURANT FOR LEASE

APPROXIMATE SIZE

Upper Level: 4,000 SF
Outdoor Deck: 2,000 SF
Lower Level: 4,000 SF

ASKING RENT

\$75,000/Month

POSSESSION

Immediate

TERM

10-15 Years

FRONTAGE

250 FT Wraparound

COMMENTS

- Full turn-key restaurant in the most prominent location directly in the Jimmy at the Modernhaus Hotel
- Portion of the ground floor has retractable roof
- Seating for over 300 guests
- Kitchen in the lower level
- 2AM liquor license in place
- Non-union hotel

NEIGHBORS

SoHo Grand Hotel • A Pasta Bar • Felix •
Maison Close • Flipper's • Little Ways • Il
Mulino • Mamo • IKG Salon • Happier Grocer
• Bang Bang Tattoo • Bisou • Acne Studios

TRANSPORTATION



JAMES FAMULARO

President
646.658.7373
jfamularo@meridiancapital.com

JACOB MAYER

Director
212.468.5926
jmayer@meridiancapital.com



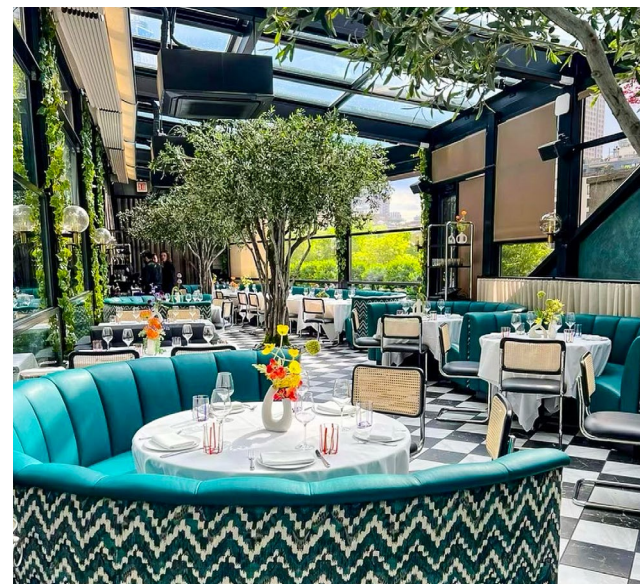
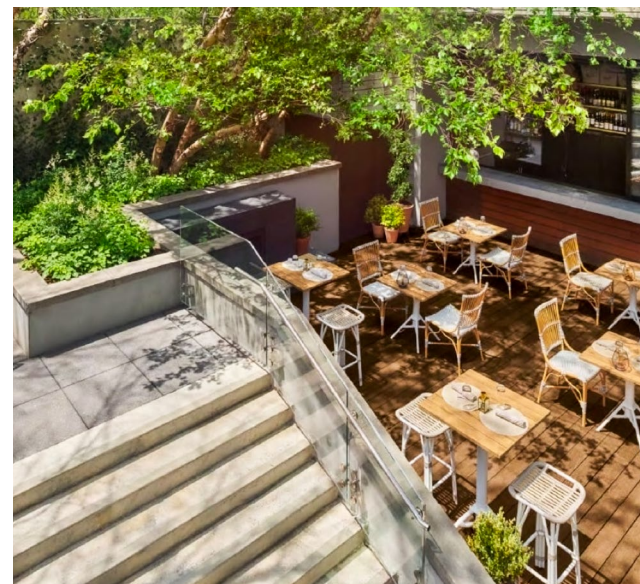
MERIDIAN
RETAIL LEASING

All information supplied is from sources deemed reliable and is furnished subject to errors, omissions, modifications, removal of the listing from sale or lease, and to any listing conditions, including the rates and manner of payment of commissions for particular offerings imposed by Meridian Capital Group. This information may include estimates and projections prepared by Meridian Capital Group with respect to future events, and these future events may or may not actually occur. Such estimates and projections reflect various assumptions concerning anticipated results. While Meridian Capital Group believes these assumptions are reasonable, there can be no assurance that any of these estimates and projections will be correct. Therefore, actual results may vary materially from these estimates and projections. Any square footage dimensions set forth are approximate.

23 GRAND STREET

SOHO/TRIBECA, NYC | Corner of Grand Street and Sixth Avenue

RESTAURANT FOR LEASE



INTERIOR

JAMES FAMULARO

President
646.658.7373
jfamularo@meridiancapital.com

JACOB MAYER

Director
212.468.5926
jmayer@meridiancapital.com



MERIDIAN
RETAIL LEASING

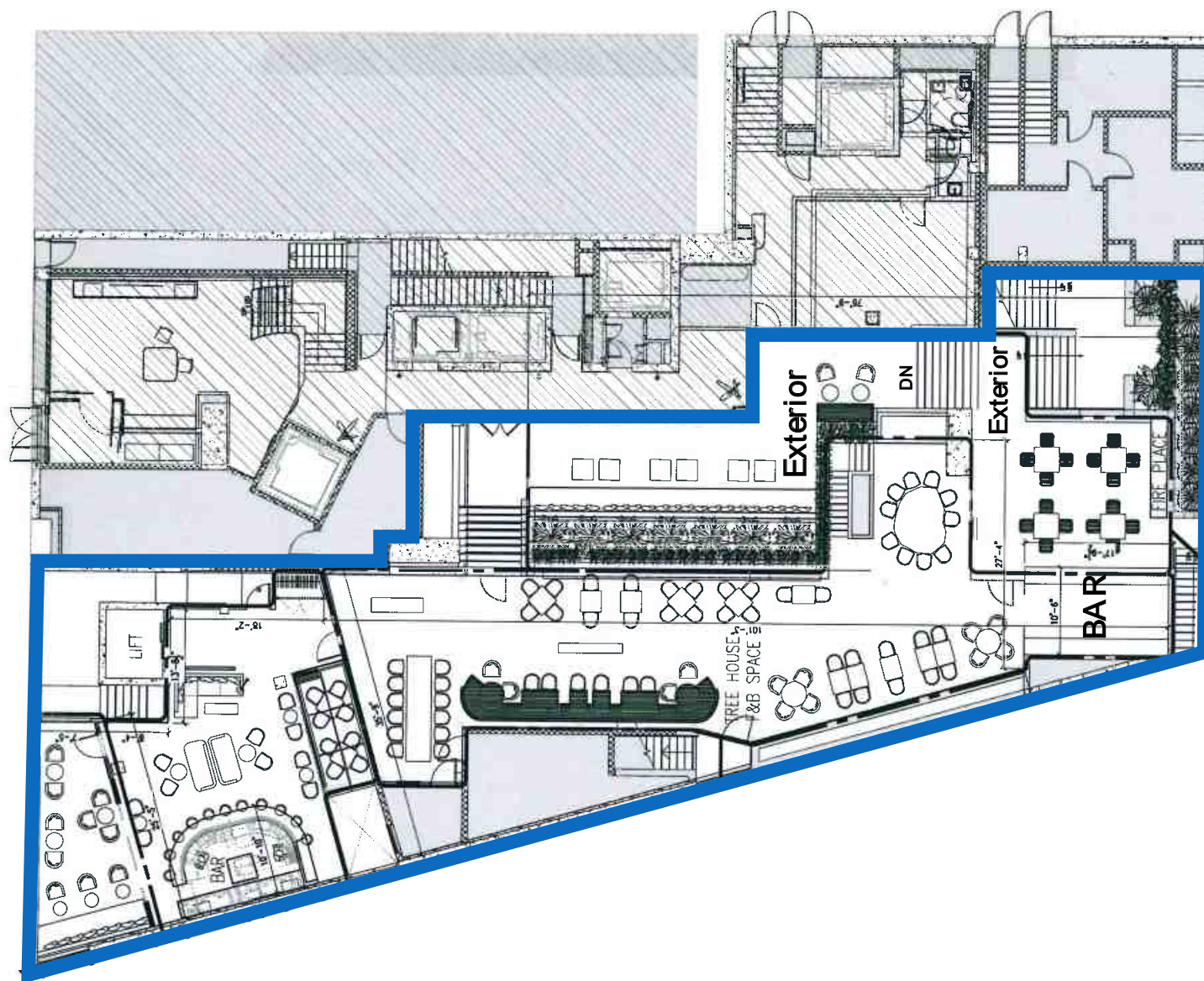
All information supplied is from sources deemed reliable and is furnished subject to errors, omissions, modifications, removal of the listing from sale or lease, and to any listing conditions, including the rates and manner of payment of commissions for particular offerings imposed by Meridian Capital Group. This information may include estimates and projections prepared by Meridian Capital Group with respect to future events, and these future events may or may not actually occur. Such estimates and projections reflect various assumptions concerning anticipated results. While Meridian Capital Group believes these assumptions are reasonable, there can be no assurance that any of these estimates and projections will be correct. Therefore, actual results may vary materially from these estimates and projections. Any square footage dimensions set forth are approximate.

23 GRAND STREET

SOHO/TRIBECA, NYC | Corner of Grand Street and Sixth Avenue

RESTAURANT FOR LEASE

FLOOR PLAN | UPPER LEVEL



JAMES FAMULARO

President
646.658.7373
jfamularo@meridiancapital.com

JACOB MAYER

Director
212.468.5926
jmayer@meridiancapital.com



MERIDIAN
RETAIL LEASING

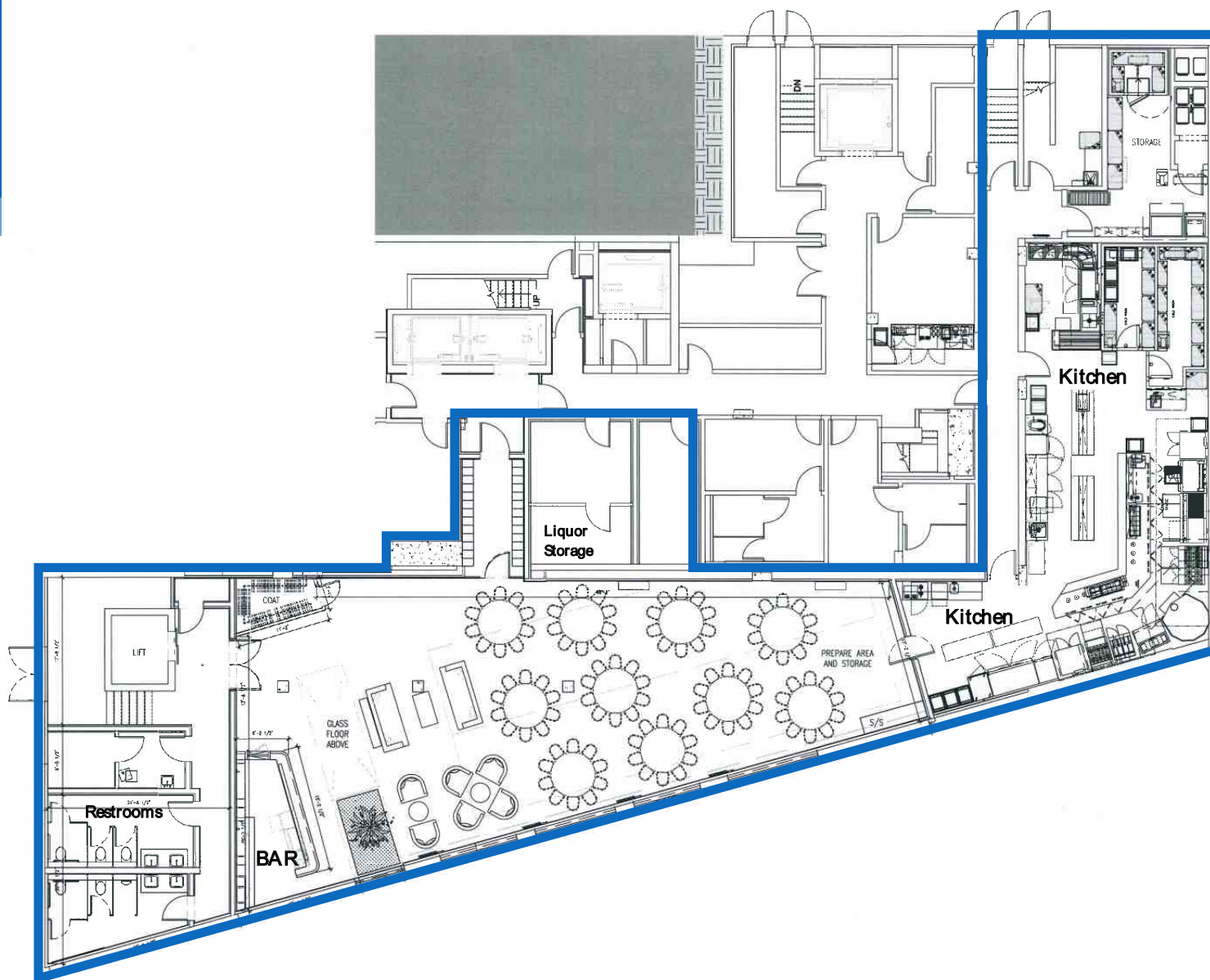
All information supplied is from sources deemed reliable and is furnished subject to errors, omissions, modifications, removal of the listing from sale or lease, and to any listing conditions, including the rates and manner of payment of commissions for particular offerings imposed by Meridian Capital Group. This information may include estimates and projections prepared by Meridian Capital Group with respect to future events, and these future events may or may not actually occur. Such estimates and projections reflect various assumptions concerning anticipated results. While Meridian Capital Group believes these assumptions are reasonable, there can be no assurance that any of these estimates and projections will be correct. Therefore, actual results may vary materially from these estimates and projections. Any square footage dimensions set forth are approximate.

23 GRAND STREET

SOHO/TRIBECA, NYC | Corner of Grand Street and Sixth Avenue

RESTAURANT FOR LEASE

FLOOR PLAN | LOWER LEVEL



JAMES FAMULARO

President
646.658.7373
jfamularo@meridiancapital.com

JACOB MAYER

Director
212.468.5926
jmayer@meridiancapital.com



MERIDIAN
RETAIL LEASING

All information supplied is from sources deemed reliable and is furnished subject to errors, omissions, modifications, removal of the listing from sale or lease, and to any listing conditions, including the rates and manner of payment of commissions for particular offerings imposed by Meridian Capital Group. This information may include estimates and projections prepared by Meridian Capital Group with respect to future events, and these future events may or may not actually occur. Such estimates and projections reflect various assumptions concerning anticipated results. While Meridian Capital Group believes these assumptions are reasonable, there can be no assurance that any of these estimates and projections will be correct. Therefore, actual results may vary materially from these estimates and projections. Any square footage dimensions set forth are approximate.

23 GRAND STREET

SOHO/TRIBECA, NYC | Corner of Grand Street and Sixth Avenue

RESTAURANT FOR LEASE



NEIGHBORS

JAMES FAMULARO

President
646.658.7373
jfamularo@meridiancapital.com

JACOB MAYER

Director
212.468.5926
jmayer@meridiancapital.com



MERIDIAN
RETAIL LEASING

All information supplied is from sources deemed reliable and is furnished subject to errors, omissions, modifications, removal of the listing from sale or lease, and to any listing conditions, including the rates and manner of payment of commissions for particular offerings imposed by Meridian Capital Group. This information may include estimates and projections prepared by Meridian Capital Group with respect to future events, and these future events may or may not actually occur. Such estimates and projections reflect various assumptions concerning anticipated results. While Meridian Capital Group believes these assumptions are reasonable, there can be no assurance that any of these estimates and projections will be correct. Therefore, actual results may vary materially from these estimates and projections. Any square footage dimensions set forth are approximate.