

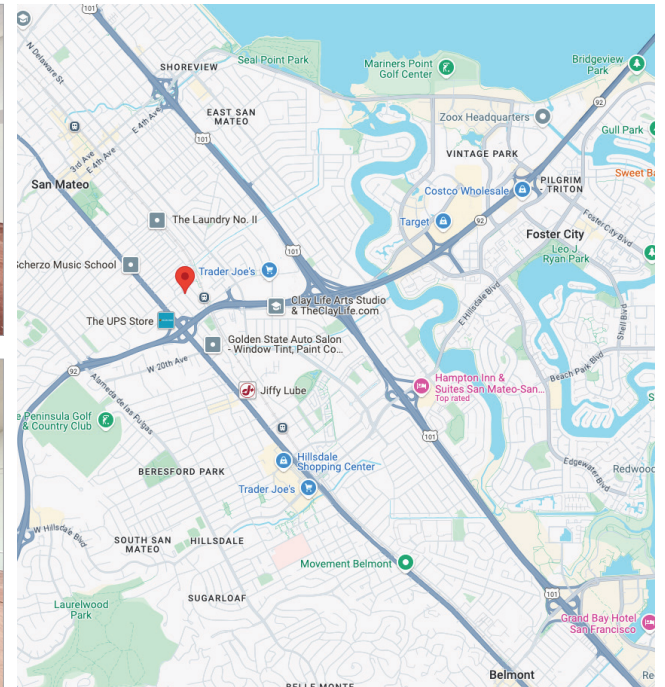
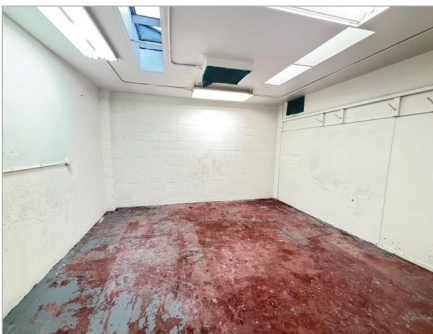
# FOR LEASE COMMERCIAL SPACES ±1,500 SF

1703 Gum Street, San Mateo, CA 94402



## PROPERTY DETAILS

- ± 1,500 sq.ft. Industrial Space
- Lease rate: \$1.75 IG/PSF
- 1703 Unit has 1 drive in door
- Located near El Camino Real, San Mateo Bridge, Caltrain, and I-101
- Local businesses, shops, and restaurants in close proximity
- C2 zoning (Regional Community Commercial – allows for a wide variety of professional uses)



## CONTACT FOR MORE DETAILS



**Andrew Peceimer**  
Senior Commercial Real Estate Advisor  
DRE #00993289  
(650) 344-4300  
apeceimer@cbbcblingame.com



**Garrett Swartz**  
Commercial Real Estate Advisor  
DRE #02178894  
(650) 352-3302  
gswartz@cbbcblingame.com



©2024 Coldwell Banker Real Estate LLC, dba Coldwell Banker Commercial Westbay Real Estate Group. All rights reserved. Coldwell Banker Commercial® and the Coldwell Banker Commercial logo are registered service marks owned by Coldwell Banker Real Estate LLC. Coldwell Banker Real Estate LLC, dba Coldwell Banker Commercial Affiliates fully supports the principal of the Fair Housing Act and the Equal Opportunity Act. Each office is independently owned and operated. The information provided is deemed reliable, but it is not guaranteed to be accurate or complete, and it should not be relied upon as such. This information should be independently verified before any person enters into a transaction based upon it.

1575 Bayshore Highway, Suite 100,  
Burlingame, CA 94010  
650-344-4300 | CBCBurlingame.com