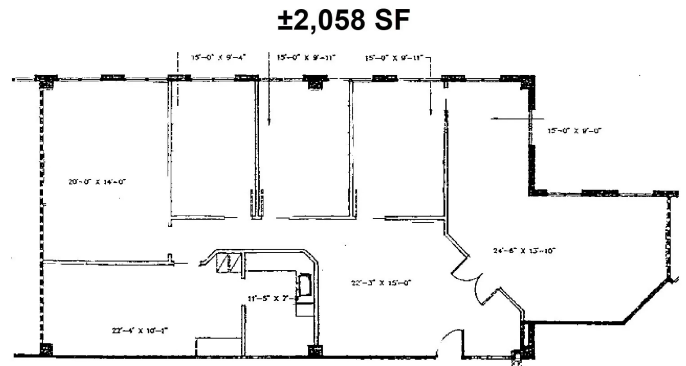


AVAILABLE FOR SUBLEASE PLANTATION CORPORATE PLAZA

7951 Southwest 6th Street, Plantation, FL 33324, Suite 216



SUMMARY

Available SF:	±2,058 SF
Sublease Rate:	Call to Inquire
Parking Ratio:	4.0/1,000

PROPERTY OVERVIEW

The Plantation Corporate Plaza has recently completed a comprehensive common area modernization program throughout the building's corridors, lobbies and restrooms. The available suite features separately controlled air conditioning and plenty of parking, enhancing the overall tenant experience. **The sublease term runs through July 31, 2027.**

PROPERTY HIGHLIGHTS

- ±2,058 SF office sublease available
- Sublease term through July 31, 2027
- Newly modernized lobbies, corridors, and restrooms
- 24/7 building access with controlled A/C
- Separately metered suite

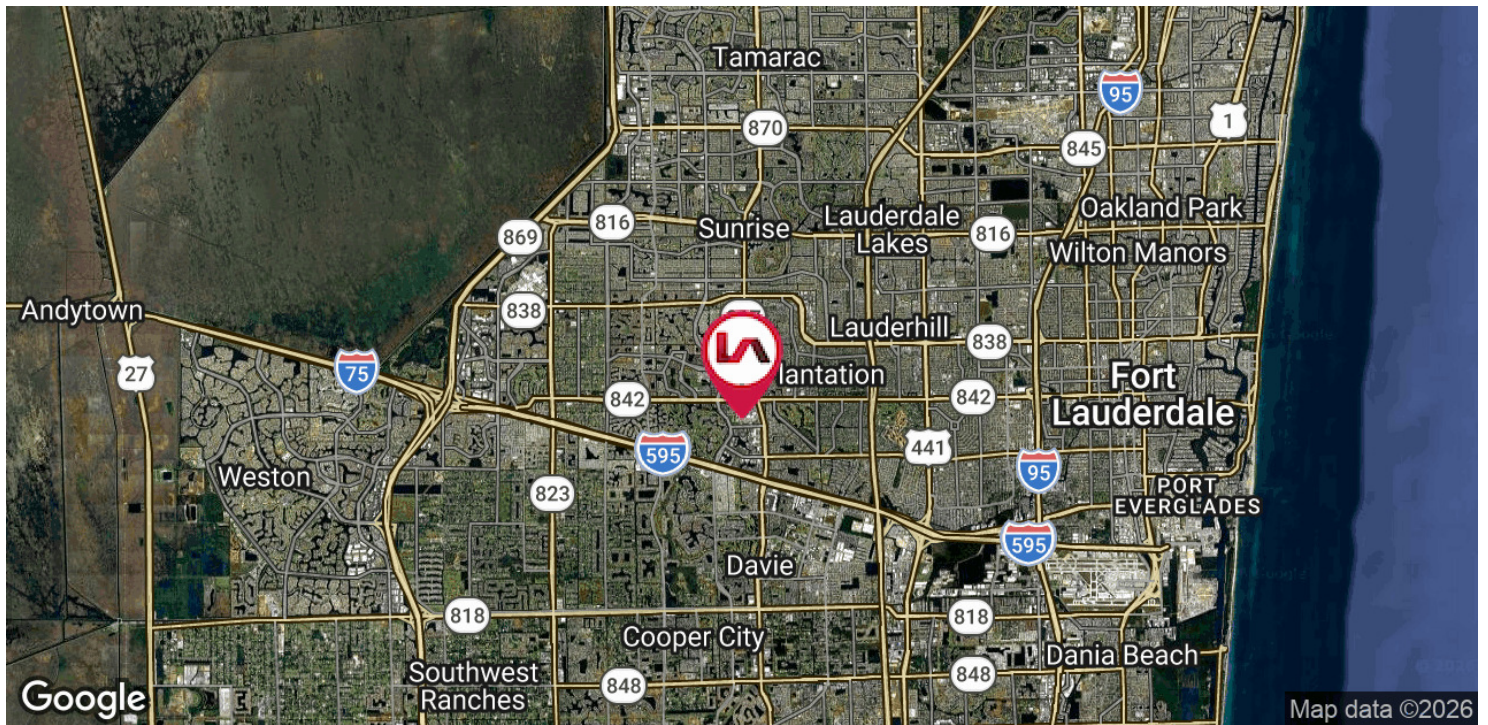
William Domsy
wdomsy@lee-associates.com
D 516.721.0676

David Scheinberg
dscheinberg@lee-associates.com
D 703.599.5019

Copyright © 2026 Lee & Associates. All rights reserved. No part of this work may be reproduced or distributed without written permission of the copyright owner. The information contained in this report was gathered by Lee & Associates from sources believed to be reliable. Lee & Associates, however, makes no representation concerning the accuracy or completeness of such information and expressly disclaims any responsibility for any inaccuracy contained herein.

AVAILABLE FOR LEASE
PLANTATION CORPORATE PLAZA

7951 Southwest 6th Street, Plantation, FL 33324, Suite 216



William Domsky
wdomsky@lee-associates.com
D 516.721.0676

David Scheinberg
dscheinberg@lee-associates.com
D 703.599.5019

Copyright © 2026 Lee & Associates. All rights reserved. No part of this work may be reproduced or distributed without written permission of the copyright owner. The information contained in this report was gathered by Lee & Associates from sources believed to be reliable. Lee & Associates, however, makes no representation concerning the accuracy or completeness of such information and expressly disclaims any responsibility for any inaccuracy contained herein.