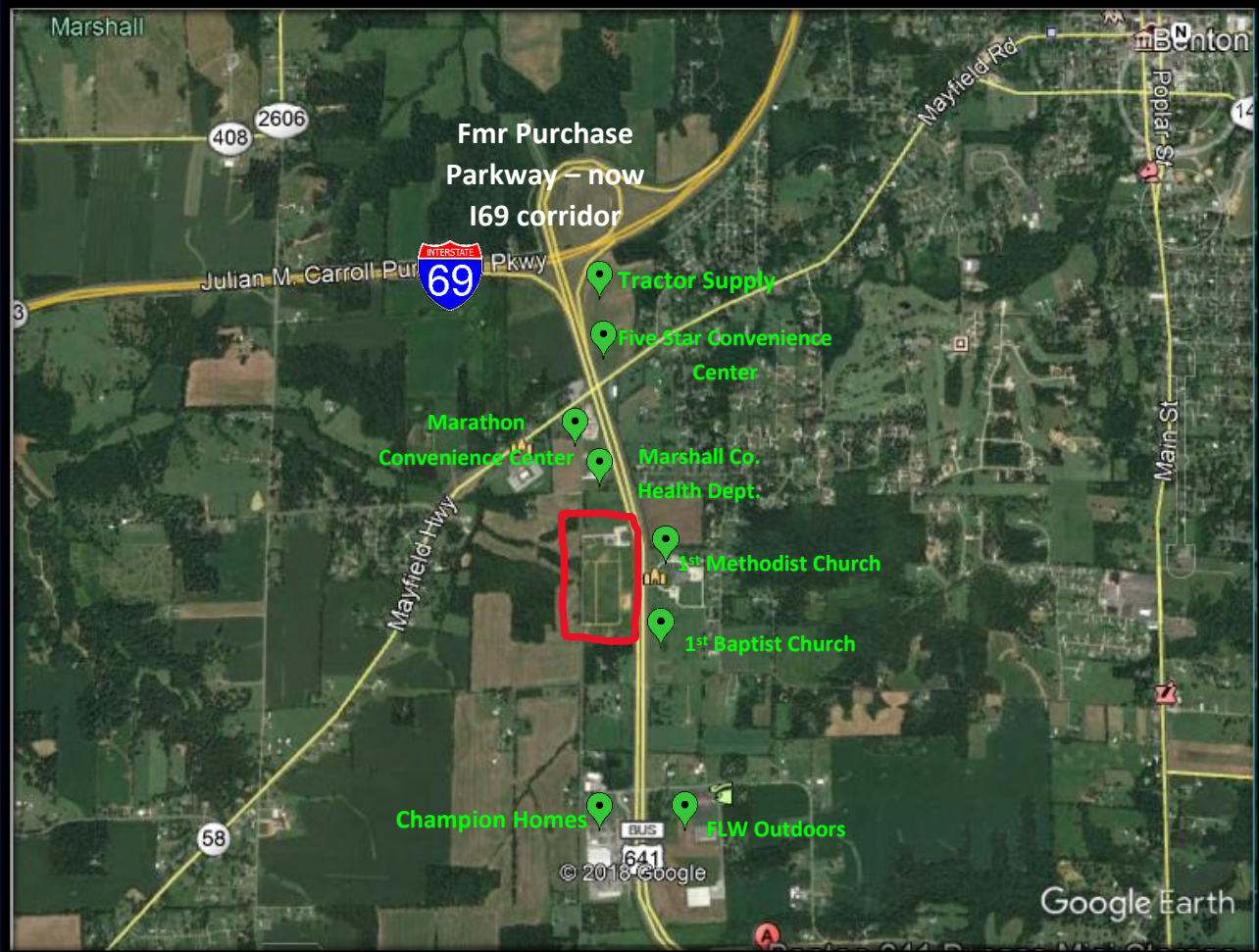


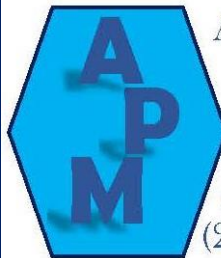
# COMMERCIAL PROPERTY FOR SALE

## 641 S Bypass Benton, KY



### 20 +/- acres available

- Growing area near industrial park
- Centrally located to multiple municipalities
- .25 mile from I-69 corridor
- Improved with city utilities



Alexander Property  
Management, LLC  
P.O. Box 1068

Benton, KY 42025

[stephen@alexandergeneralcontracting.com](mailto:stephen@alexandergeneralcontracting.com)

(270) 527-14223

# 20 acres +/-

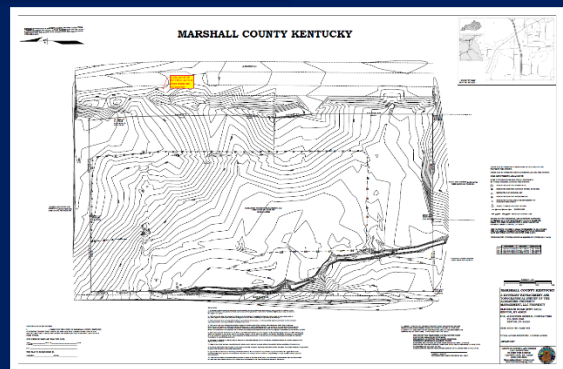
# Will divide



Location situated in central location of Marshall County.

Frontage on US Hwy 641 S

Rapidly growing commercial and industrial area



### RECENT NEW COMMERCIAL DEVELOPMENTS NEARBY:

- Five Star Convenience Center
- Tractor Supply
- First Missionary Baptist Church
- North Marshall Middle School
- Marshall County Health Department

Price not disclosed – please contact for details