

1105 Constitution Dr
Trinidad, CO

FOR SALE/LEASE



Manuel Martin
970-698-0188
manuel@stepcre.com

James Bealer
936-444-5277
james@stepcre.com





Property Notes:

A premier 30,000± SF industrial facility in Southern Colorado with direct visibility and access from Interstate I-25. The building is available for sale or lease. Flexible leasing options allow for single-tenant or multi-tenant configurations. The approximately 4-acre yard can be used for outdoor storage or operational use. Lease rates vary based on configuration and intended use.

Asking Price:	\$1,650,000
Asking Rent	\$6/SF NNN
Lease Term:	Negotiable
Clear Height:	21 Feet
Available Space:	~15,000-30,000 SF
Available Raw Land:	~3.9 Acres



Property Description

This all-metal industrial building offers durable construction with a metal roof engineered for long-term, heavy-duty use and features an MED-approved security camera system with remote monitoring, controlled access via badge scanning. The property is configured to support medical-grade extraction, sanitation, food processing, and advanced manufacturing operations, with strong infrastructure, powerful utilities, and high-capacity HVAC systems designed to meet demanding operational requirements. Five drive-in/roll-up doors ranging from 18' x 10' to 8' x 8' allow for efficient loading, circulation, and flexible workflow throughout the facility. The building layout supports a wide range of industrial uses and can accommodate varying operational scales. The facility is available for single-tenant, multi-tenant, or yard lease configurations and is well-suited for manufacturing, distribution, fabrication, equipment rental, oil field services, outdoor storage, and other industrial or commercial applications.

Highlights

- 30,000 SF industrial facility
- Two main warehouse spaces:
 - Space 1: 13,000SF
 - Space 2: 13,000SF
- 3-Phase power (1400 amps)
- 5 drive-in/roll-up Doors (18 ft x 10 ft to 8 ft x 8 ft)
- All-metal building and roof
- Medical-grade extraction and sanitation areas
- 8.81 Acres of industrial land (3.9 acres of vacant raw land)
- MED approved security cameras
- CO₂ System and gas lines throughout

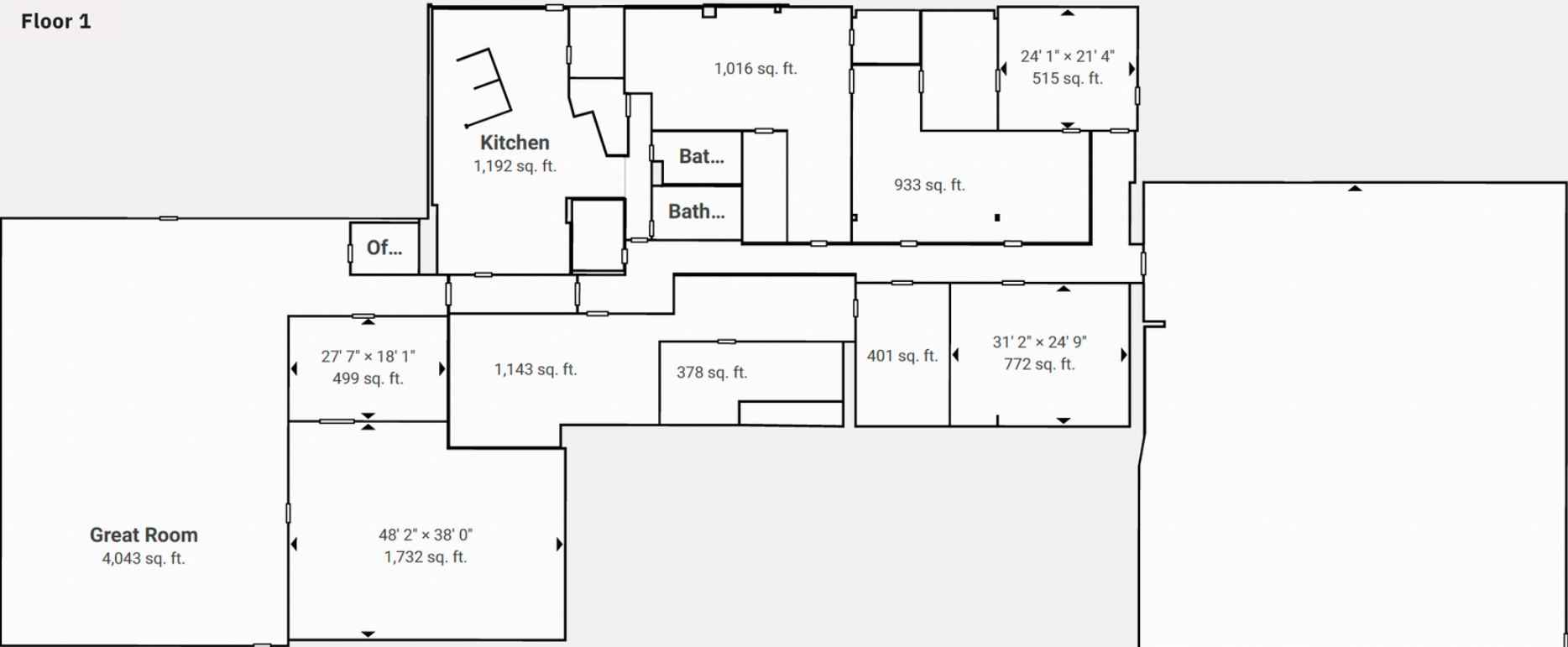




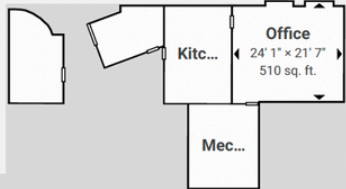


Floor Plan

Floor 1



Floor 2



74' 7" x 174' 7"
12,974 sq. ft.





Take the Next Step

Contact US



Manuel Martin

970-698-0188

manuel@stepcre.com



James Bealer

936-444-5277

james@stepcre.com