

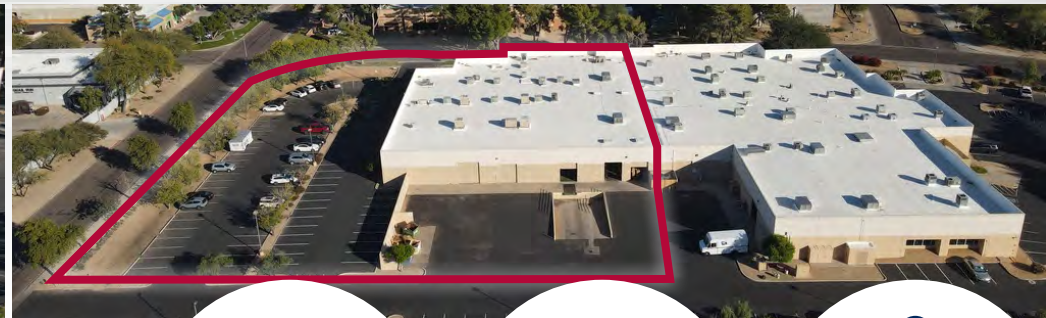
FOR LEASE ±19,793 SF

2102 W QUAIL AVE. | PHOENIX | AZ

DAUM
COMMERCIAL REAL ESTATE SERVICES



DEER VALLEY SUBMARKET | INDUSTRIAL WAREHOUSE/MANUFACTURE



FOR MORE INFORMATION, CONTACT:

TREVOR MCKENDRY
Executive Vice President
P: 602.575.2332 | F: 602.296.0819
tmckendry@daumcre.com

CHRIS ROGERS
Executive Vice President
P: 602.575.2309 | F: 602.296.0819
crogers@daumcre.com

BEAU CITRON
Associate
P: 602.575.2319 | F: 602.499.3971
bcitron@daumcre.com



±65,093 SF
TOTAL BUILDING SIZE



CP/GCP
ZONING



DEER VALLEY
PRIME SUBMARKET
LOCATION

D/AQ Corp. #01129558. Maps Courtesy ©Google & ©Microsoft. Although all information is furnished regarding for sale, rental or financing is from sources deemed reliable, such information has not been verified and no express representation is made nor is any to be implied as to the accuracy thereof, and it is submitted subject to errors, omissions, changes of price, rental or other conditions, prior sale, lease or financing, or withdrawal without notice.

FOR LEASE ±19,793 SF

2102 W QUAIL AVE. | PHOENIX | AZ

LOCATION HIGHLIGHTS AERIAL



PROPERTY HIGHLIGHTS:



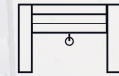
±19,793 SF
SUITE SIZE



±65,093 SF
BUILDING SIZE



14'
CLEAR HEIGHT



GRADE LEVEL AND
TRUCKWELL LOADING
DOORS



HEAVY POWER
277/480 VOLTS
3 PHASE



1.84/1,000
PARKING RATIO



CP/GCP ZONING



IP, PHOENIX
ZONING

FOR MORE INFORMATION, CONTACT:

TREVOR MCKENDRY

Executive Vice President

P: 602.575.2332 | F: 602.296.0819

tmckendry@daumcre.com

CHRIS ROGERS

Executive Vice President

P: 602.575.2309 | F: 602.296.0819

crogers@daumcre.com

BEAU CITRON

Associate

P: 602.575.2319 | F: 602.499.3971

bcitron@daumcre.com

D/AQ Corp. #01129558. Maps Courtesy ©Google & ©Microsoft. Although all information is furnished regarding for sale, rental or financing is from sources deemed reliable, such information has not been verified and no express representation is made nor is any to be implied as to the accuracy thereof, and it is submitted subject to errors, omissions, changes of price, rental or other conditions, prior sale, lease or financing, or withdrawal without notice.



FOR LEASE ± 19,793 SF

2102 W QUAIL AVE. | PHOENIX | AZ



FOR MORE INFORMATION, CONTACT:

TREVOR MCKENDRY

Executive Vice President

P: 602.575.2332 | F: 602.296.0819

tmckendry@daumcre.com

CHRIS ROGERS

Executive Vice President

P: 602.575.2309 | F: 602.296.0819

crogers@daumcre.com

BEAU CITRON

Associate

P: 602.575.2319 | F: 602.499.3971

bcitron@daumcre.com

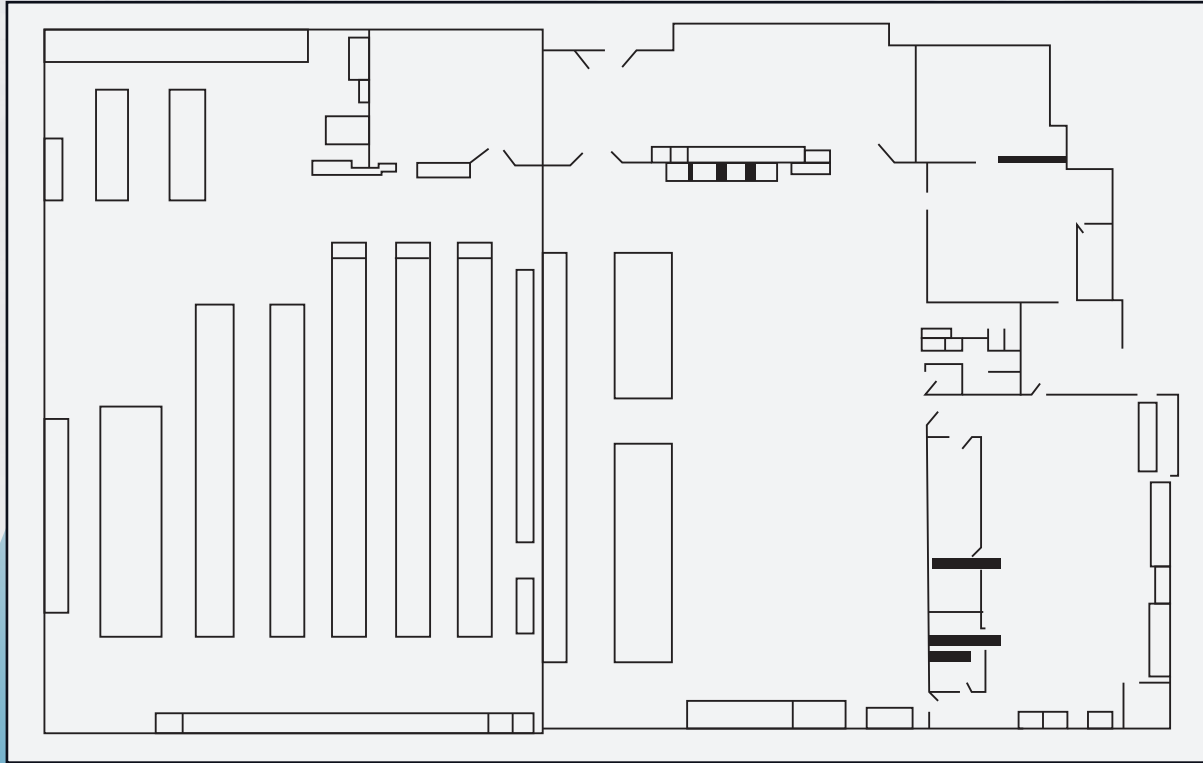
AERIALS

D/AQ Corp. #01129558. Maps Courtesy ©Google & ©Microsoft. Although all information is furnished regarding for sale, rental or financing is from sources deemed reliable, such information has not been verified and no express representation is made nor is any to be implied as to the accuracy thereof, and it is submitted subject to errors, omissions, changes of price, rental or other conditions, prior sale, lease or financing, or withdrawal without notice.

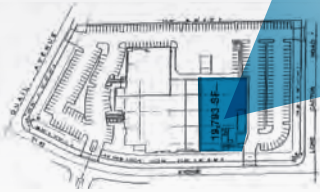
DAUM
COMMERCIAL REAL ESTATE SERVICES

FOR LEASE ±19,793 SF

2102 W QUAIL AVE. | PHOENIX | AZ



NOT TO SCALE



FOR MORE INFORMATION, CONTACT:

TREVOR MCKENDRY

Executive Vice President

P: 602.575.2332 | F: 602.296.0819

tmckendry@daumcre.com

CHRIS ROGERS

Executive Vice President

P: 602.575.2309 | F: 602.296.0819

crogers@daumcre.com

BEAU CITRON

Associate

P: 602.575.2319 | F: 602.499.3971

bcitron@daumcre.com

FLOOR PLAN

D/AQ Corp. #01129558. Maps Courtesy ©Google & ©Microsoft. Although all information is furnished regarding for sale, rental or financing is from sources deemed reliable, such information has not been verified and no express representation is made nor is any to be implied as to the accuracy thereof, and it is submitted subject to errors, omissions, changes of price, rental or other conditions, prior sale, lease or financing, or withdrawal without notice.





FOR LEASE ±19,793 SF

2102 W QUAIL AVE. | PHOENIX | AZ

FOR MORE INFORMATION, CONTACT:

TREVOR MCKENDRY

Executive Vice President

P: 602.575.2332 | F: 602.296.0819

tmckendry@daumcre.com

CHRIS ROGERS

Executive Vice President

P: 602.575.2309 | F: 602.296.0819

crogers@daumcre.com

BEAU CITRON

Associate

P: 602.575.2319 | F: 602.499.3971

bcitron@daumcre.com

LOCATION MAP



FOR LEASE ±19,793 SF

2102 W QUAIL AVE. | PHOENIX | AZ



FOR MORE INFORMATION, CONTACT:

TREVOR MCKENDRY
Executive Vice President
P: 602.575.2332 | F: 602.296.0819
tmckendry@daumcre.com

CHRIS ROGERS
Executive Vice President
P: 602.575.2309 | F: 602.296.0819
crogers@daumcre.com

BEAU CITRON
Associate
P: 602.575.2319 | F: 602.499.3971
bcitron@daumcre.com

AMENITIES MAP

DA/Q Corp. #01129558. Maps Courtesy ©Google & ©Microsoft. Although all information is furnished regarding for sale, rental or financing is from sources deemed reliable, such information has not been verified and no express representation is made nor is any to be implied as to the accuracy thereof, and it is submitted subject to errors, omissions, changes of price, rental or other conditions, prior sale, lease or financing, or withdrawal without notice.

DAUM
COMMERCIAL REAL ESTATE SERVICES

FOR LEASE ± 19,793 SF

2102 W QUAIL AVE.
PHOENIX | AZ

TOP COMPANIES NO. EMPLOYEES

1. TSMC
20,000 Employees
2. THE ARIZONA REPUBLIC
1,011 Employees
3. COX
2,158 Employees
4. HONEYWELL
6,111 Employees
5. DISCOVER
3,003 Employees
6. BEST WESTERN
966 Employees
7. AMERICAN EXPRESS
7,603 Employees
8. PETSMART
2,034 Employees

