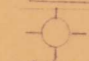
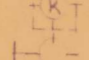
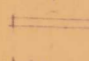
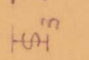
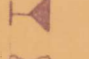

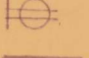
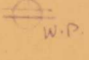

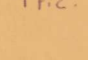
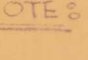


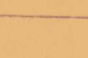
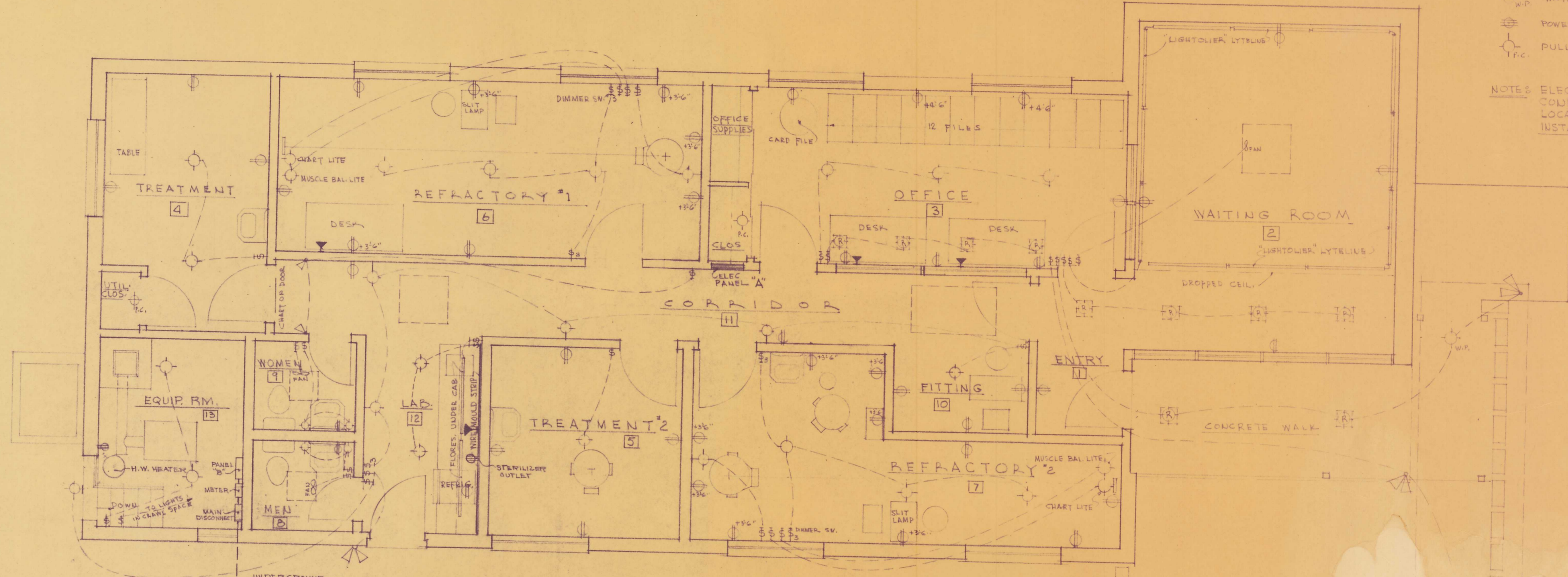
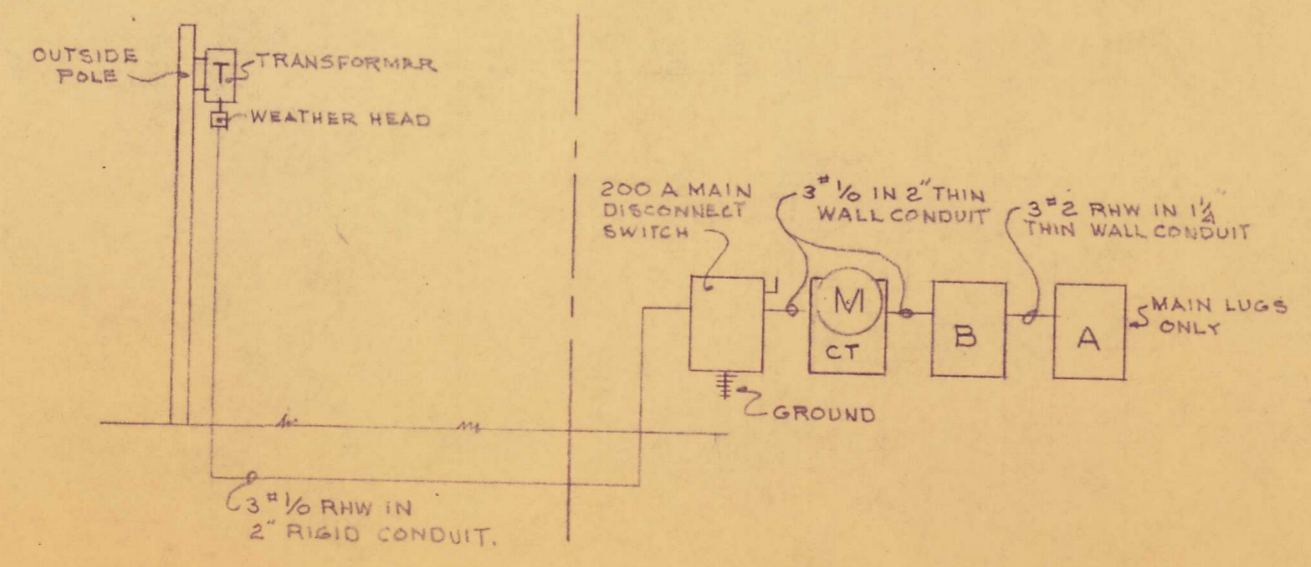


- ELECTRICAL LEGEND**
-  CEILING LIGHT OUTLET
 -  RECESSED CEILING LIGHT OUTLET
 -  BRACKETED WALL OUTLET
 -  FLUORESCENT LIGHT STRIP
 -  SWITCH (DIMMER SW. NOTED ON PLAN)
 -  3-WAY SWITCH
 -  TELEPHONE OUTLET
 -  EXHAUST FAN
 -  EXTERIOR FLOODLIGHT
 -  DUPLEX WALL RECEPTACLE
 -  WIRE MOULD STRIP RECEPTABLES
 -  WATERPROOF EXTERIOR RECEPTACLE
 -  POWER RECEPTACLE
 -  PULL CHAIN CEILING OUTLET

NOTES: ELECTRICAL CONTRACTOR TO CONFIRM ALL RECEPTACLE + OUTLET LOCATIONS WITH THE OWNER BEFORE INSTALLATION OF WIRING.



ELECTRICAL LAYOUT FLOOR PLAN
SCALE 1/4" = 1'-0"



SCHEMATIC - ELECT. SERVICE
N.T.S.

NOTE #1: SEE DWG. AC-1 FOR ELECTRICAL LAYOUT FOR EQUIPMENT ROOM #13.
NOTE #2: SEE FOUNDATION PLAN FOR CRAWL SPACE LIGHTING LAYOUT.

CLINIC BUILDING FOR
DR. ARNAUD R. LAPIERRE & DR. WARREN W. LAPIERRE
CLINIC DRIVE
WARREN, CONN.

SCHOFIELD, LINDSAY & LIEBOWITZ ARCHITECTS
WATERFORD, CONNECTICUT

6

DRAWN: N.R.F. CHECKED: N.R.F. APRIL 18, 1962