



COUNTRY CLUB SHOPS | FOR LEASE

1402-1422 NW 7 Highway, Blue Springs, Missouri



LEASE RATE: \$15/SF NNN | SPACE FOR LEASE

DEMOGRAPHICS

	1 mile	3 miles	5 miles
Estimated Population	9,286	50,700	85,770
Avg. Household Income	\$95,919	\$89,249	\$93,664

- 1,600 SF space available
- 11,000 SF building on 1.5 acres with e-commerce resistant tenants
- 100% of current tenants have signed/extended since 2018
- Less than 1/2 mile north of I-70 with direct frontage on 7 Highway
- Center built in 2004 - diligently maintained
- Hard corner on signalized intersection at the entrance of Blue Springs Country Club

 [CLICK HERE TO VIEW MORE LISTING INFORMATION](#)

For More Information Contact:

WILLIAM GLASGOW | 816.412.7394 | wglasgow@blockandco.com

GARRETT COHOON | 816.412.7315 | gcohoon@blockandco.com

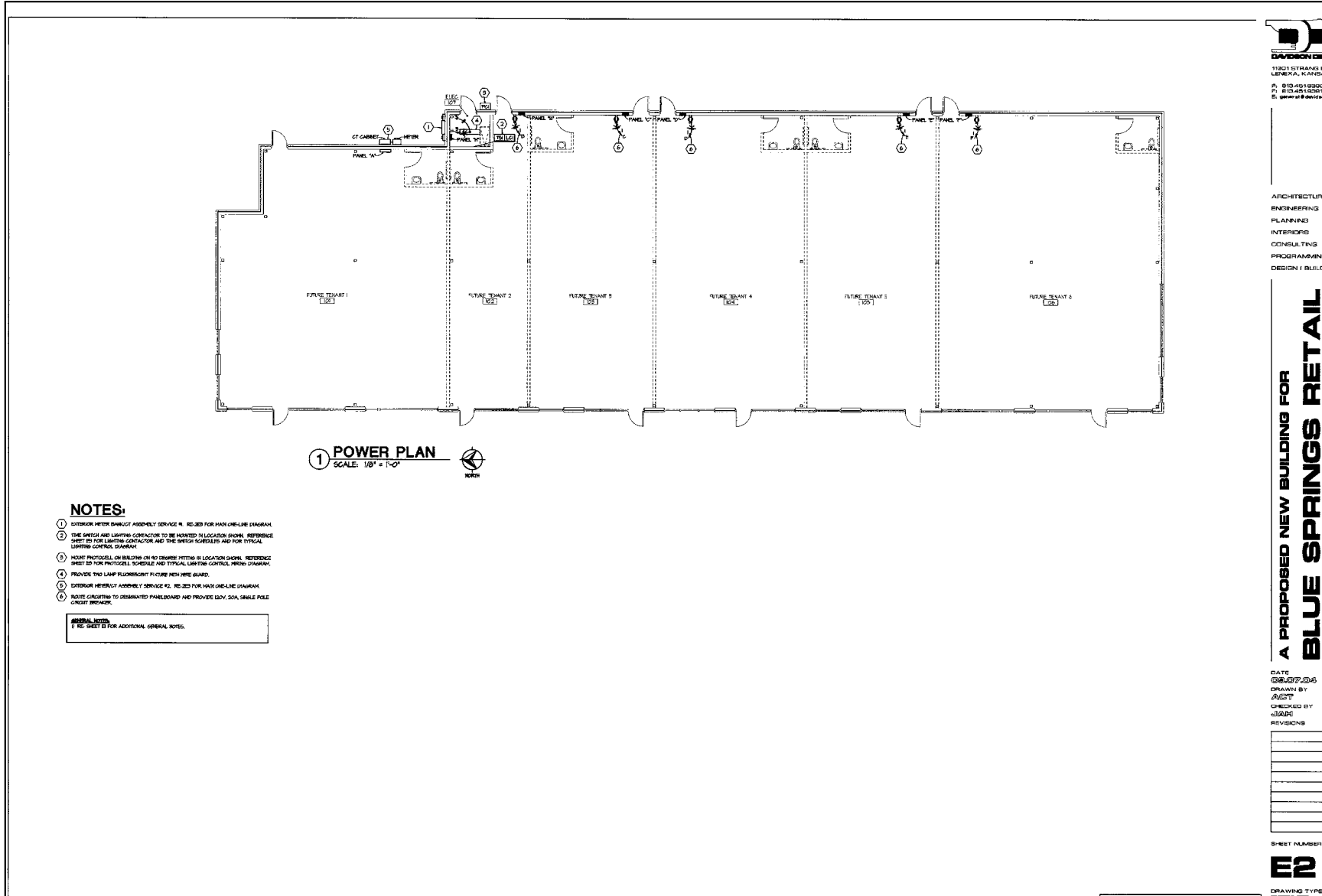
Exclusive Agents



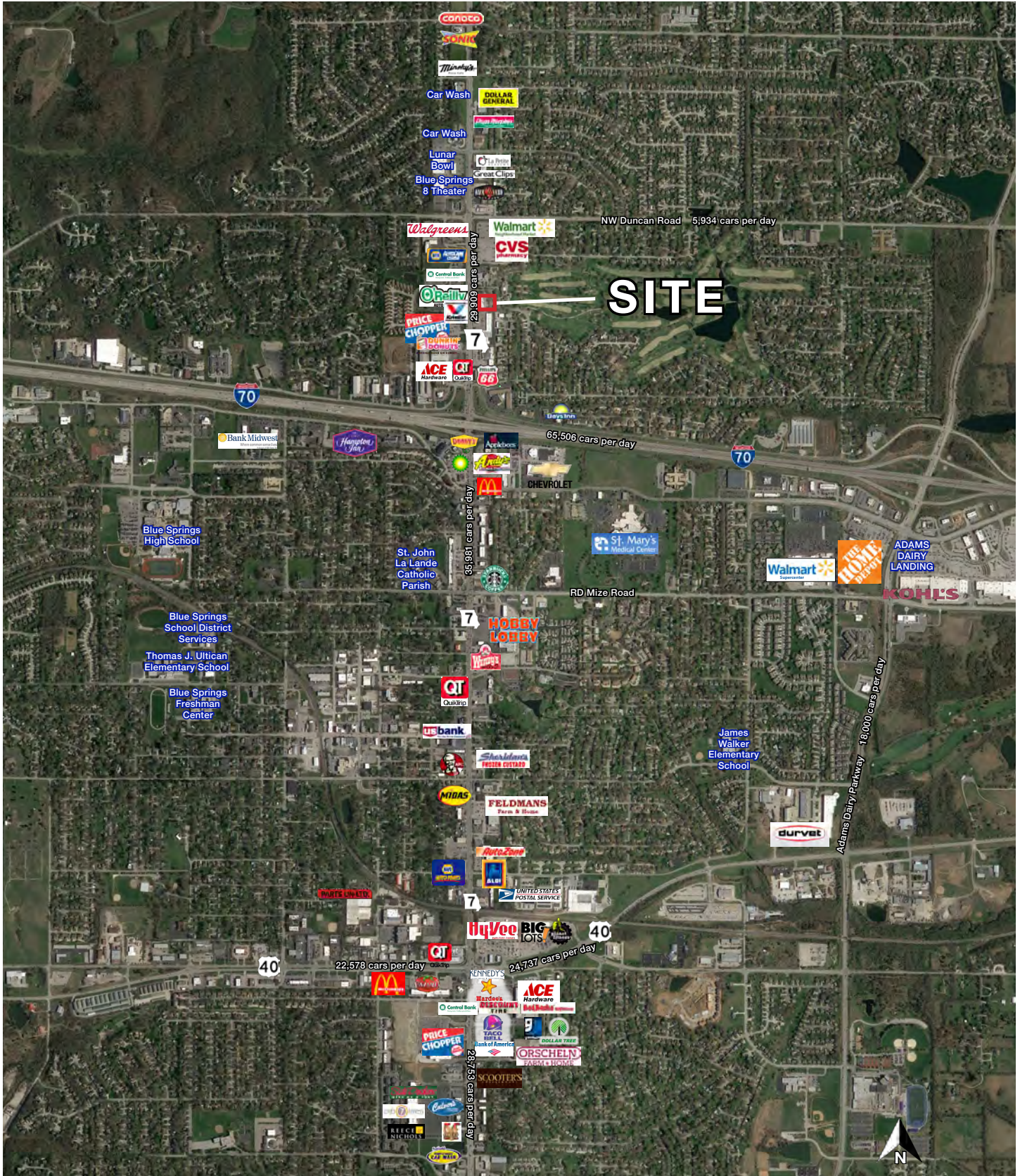
PHOTOS



SITE PLAN



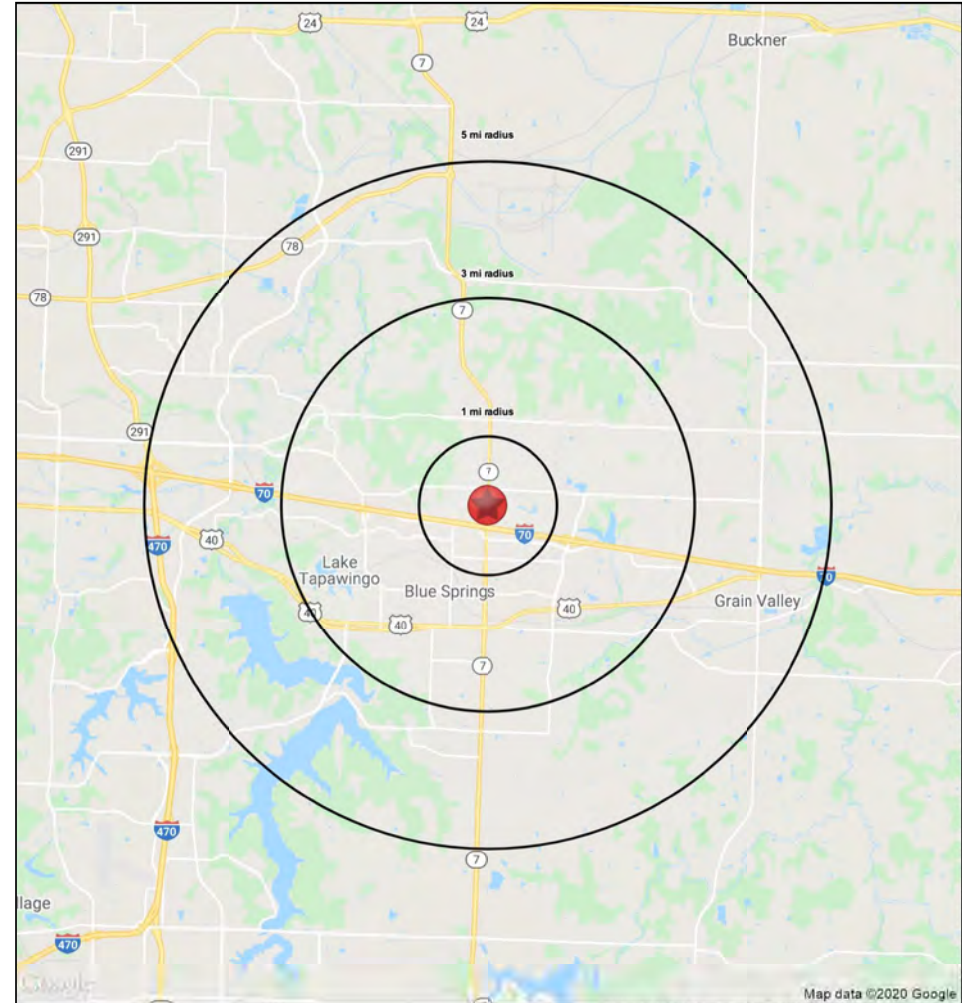
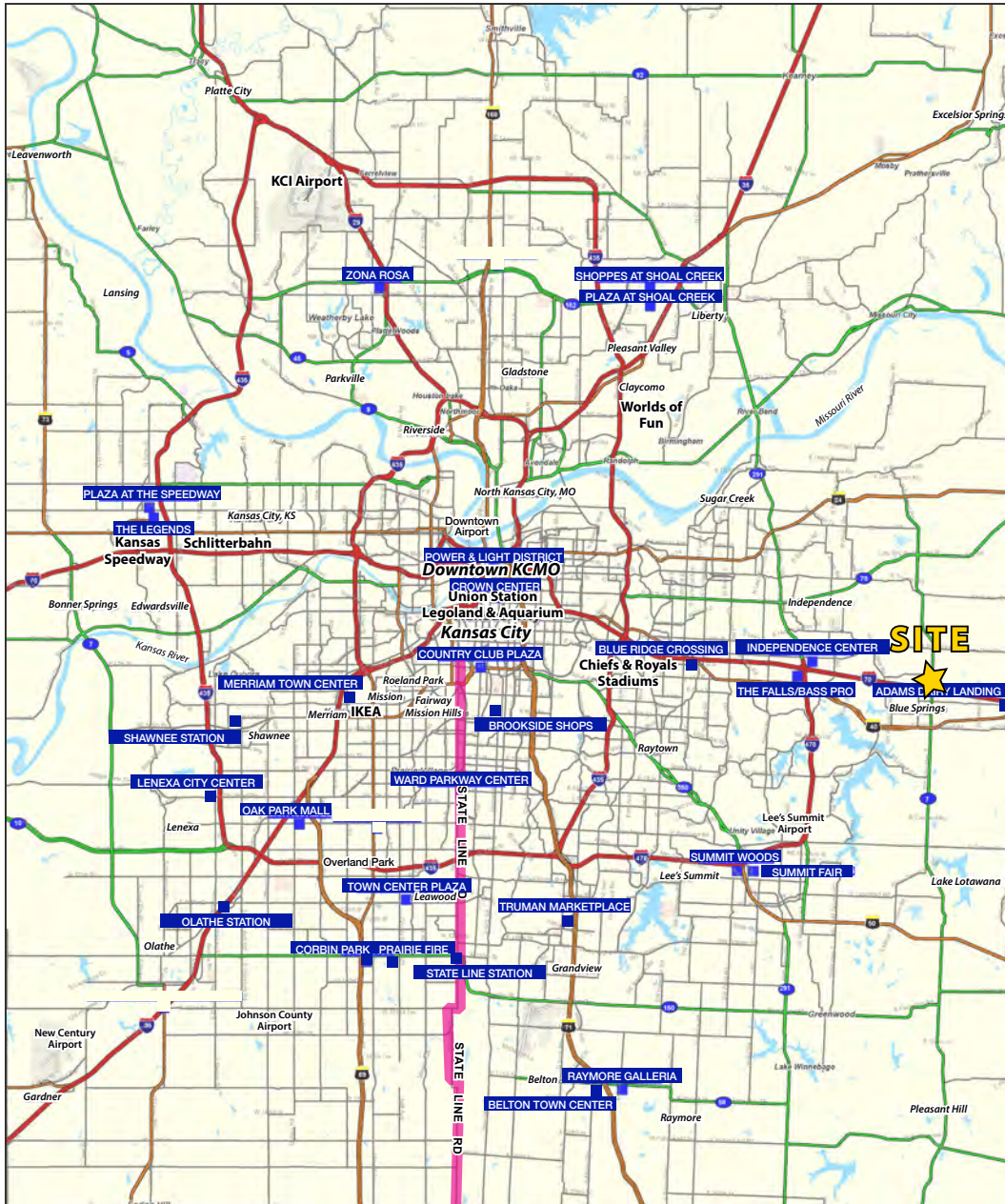
AERIAL





COUNTRY CLUB SHOPS | SPACE FOR LEASE

1402-1422 NW 7 Highway, Blue Springs, Missouri





COUNTRY CLUB SHOPS | FOR LEASE

1402-1422 NW 7 Highway, Blue Springs, Missouri

1402-1422 NW 7 Highway

Blue Springs, MO 64015

1 mi radius 3 mi radius 5 mi radius

		1 mi radius	3 mi radius	5 mi radius
POPULATION	2020 Estimated Population	9,286	50,700	85,770
	2025 Projected Population	9,292	50,450	85,202
	2010 Census Population	9,234	49,118	79,341
	2000 Census Population	9,187	45,120	64,636
	Projected Annual Growth 2020 to 2025	-	-	-0.1%
	Historical Annual Growth 2000 to 2020	-	0.6%	1.6%
	2020 Median Age	39.5	36.3	35.9
HOUSEHOLDS	2020 Estimated Households	3,661	19,197	32,317
	2025 Projected Households	3,689	19,292	32,397
	2010 Census Households	3,586	18,356	29,598
	2000 Census Households	3,461	16,373	23,402
	Projected Annual Growth 2020 to 2025	0.2%	-	-
	Historical Annual Growth 2000 to 2020	0.3%	0.9%	1.9%
RACE AND ETHNICITY	2020 Estimated White	86.9%	86.4%	87.3%
	2020 Estimated Black or African American	5.9%	6.3%	5.6%
	2020 Estimated Asian or Pacific Islander	2.1%	1.8%	2.1%
	2020 Estimated American Indian or Native Alaskan	0.5%	0.5%	0.4%
	2020 Estimated Other Races	4.6%	5.0%	4.6%
	2020 Estimated Hispanic	5.6%	5.6%	5.4%
INCOME	2020 Estimated Average Household Income	\$95,919	\$89,249	\$93,664
	2020 Estimated Median Household Income	\$80,869	\$78,677	\$82,063
	2020 Estimated Per Capita Income	\$37,849	\$33,814	\$35,319
EDUCATION (AGE 25+)	2020 Estimated Elementary (Grade Level 0 to 8)	0.8%	0.9%	1.0%
	2020 Estimated Some High School (Grade Level 9 to 11)	4.1%	4.0%	3.8%
	2020 Estimated High School Graduate	23.4%	27.1%	27.0%
	2020 Estimated Some College	27.8%	24.9%	24.4%
	2020 Estimated Associates Degree Only	9.4%	8.6%	8.6%
	2020 Estimated Bachelors Degree Only	24.1%	23.1%	23.1%
	2020 Estimated Graduate Degree	10.5%	11.3%	12.0%
BUSINESS	2020 Estimated Total Businesses	466	1,886	3,211
	2020 Estimated Total Employees	4,910	21,739	38,285
	2020 Estimated Employee Population per Business	10.5	11.5	11.9
	2020 Estimated Residential Population per Business	19.9	26.9	26.7

