

RE/MAX
COMMERCIAL®



THE DEMARCO
REAL ESTATE GROUP

**- NO -
LOITERING**
VIOLATORS WILL BE
ARRESTED PAPER FL BY 8/1/00

1932

FOR LEASE

INDUSTRIAL BAY

1932 STIRLING RD

DANIA BEACH, FL

FOR LEASE:

1932 STIRLING RD
DANIA BEACH, FL

PRICE: \$30.00 PER SF MG

PROPERTY OVERVIEW:

Prime Opportunity! Located just off I-95 and minutes from Fort Lauderdale-Hollywood International Airport, this ±2,200 SF industrial bay is ideal for a variety of light industrial, warehouse, or service-based uses. The space offers a 17' clear ceiling height, drive-in dock door, separate man door, private restroom, and ample on-site parking. Positioned in a well-maintained multi-tenant building with excellent visibility on Stirling Road, this property provides unbeatable convenience and access in a prime Dania Beach location.

PROPERTY HIGHLIGHTS:

- Great Industrial Bay
- A+ Location Directly on Stirling Rd
- Minutes from I-95 and FLL Airport
- Ample Parking
- Space Size: 2,200 SF
- Drive-in Dock Door & Man Door
- Clear Height: 17'
- Private Office & Restroom

THE DEMARCO REAL ESTATE GROUP™

Office: (954) 453-1000

john@demarcogroup.com

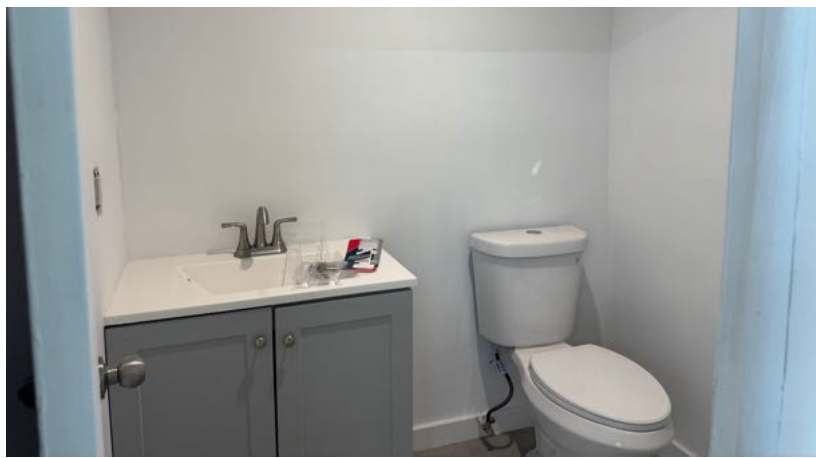
www.DeMarcoGroup.com

1901 Harrison Street, Hollywood FL, 33020



PHOTOS:

1932 STIRLING RD
DANIA BEACH, FL



THE DEMARCO REAL ESTATE GROUP™

Office: (954) 453-1000

john@demarcogroup.com

www.DeMarcoGroup.com

1901 Harrison Street, Hollywood FL, 33020



THE DEMARCO®
REAL ESTATE GROUP