

AVAILABLE: 4.0 - 10.0 AC TRACTS

# BUILD TO SUIT/ GROUND LEASE ON 56 ACRES AT I-20 AND LOOP 250

Midland, TX 79703



John Elphick, CCIM

Broker  
432.682.2510  
john@moriahgroup.net

Tommy Reynolds

Agent  
432.413.6393  
tommy@moriahgroup.net

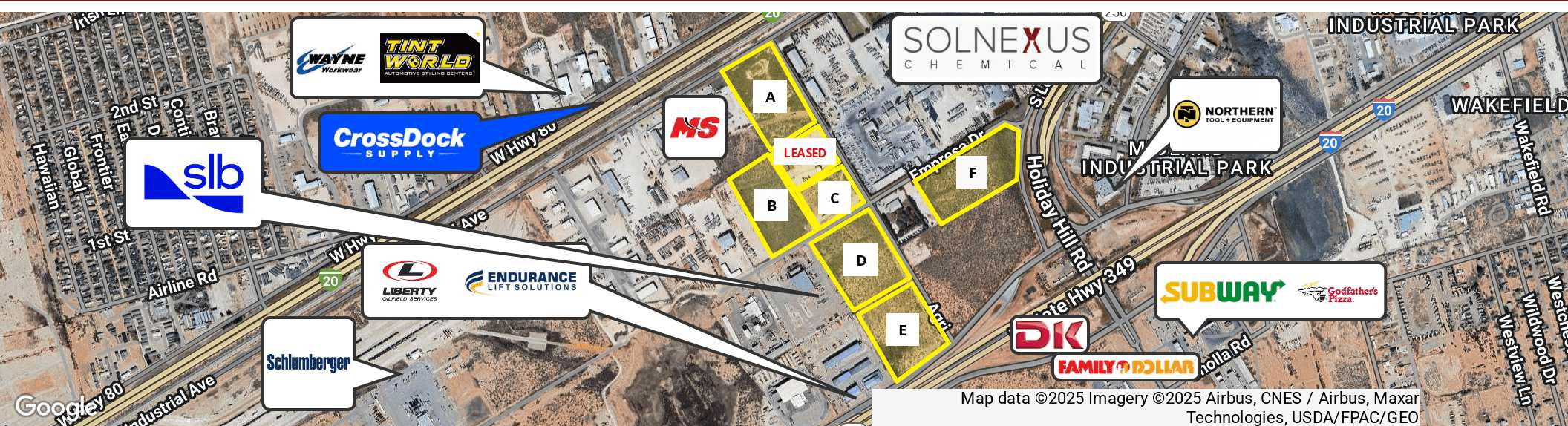
**MORIAH**  
BROKERAGE SERVICES, LLC



AVAILABLE: 4.0 - 10.0 AC TRACTS

# BUILD TO SUIT/ GROUND LEASE ON 56 ACRES AT I-20 AND LOOP 250

Midland, TX 79703



## Property Description

Build-to-Suit and Ground Lease lots available in Southwest Midland, conveniently located near Loop 250, Hwy 80 and I-20. The site plan includes seven lots ranging from 4 to 10 acres, all with easy access to Hwy 80, Loop 250, and I-20 via Agri Road and Empresa Drive. Tenants can either design a custom build to fit their needs or select from the developer's spec options.

## Property Highlights

- Lots A, B, C in Midland County
- Lots E, D and F are partially in Midland City Limits | Zoned: Light Industrial
- Utilities near by (Water & Sewer)

## Offering Summary

Lease Rate	*Call for Pricing
Total Acreage:	56.14 AC

## Location Description

All lots are positioned just west of Loop 250, between Hwy 80 and I-20, in a rapidly growing industrial area. Centrally located in the Permian Basin, they offer convenient access to both Midland and Odessa.

Tracts	Acreage
A	9.16 Acres
B	9.12 Acres
C	4.49 Acres
D	10 Acres
E	10 Acres
F	8.82 Acres

John Elphick, CCIM

Broker  
432.682.2510  
john@moriahgroup.net

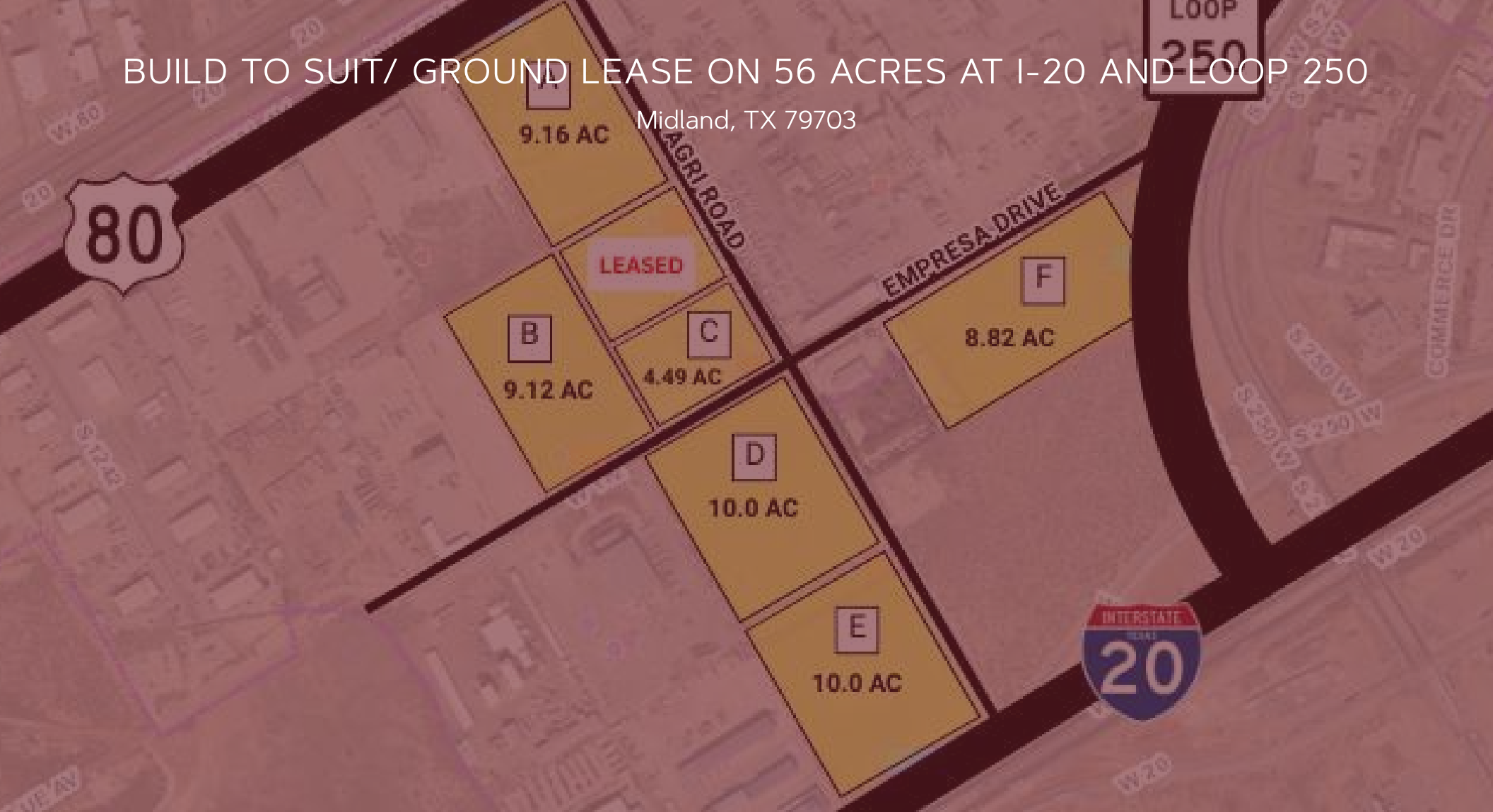
Tommy Reynolds

Agent  
432.413.6393  
tommy@moriahgroup.net

**MORIAH**  
BROKERAGE SERVICES, LLC

# BUILD TO SUIT/ GROUND LEASE ON 56 ACRES AT I-20 AND LOOP 250

Midland, TX 79703



## Contact Brokers:

**John Elphick, CCIM**

Broker  
432.682.2510  
john@moriahgroup.net

**Tommy Reynolds**

Agent  
432.413.6393  
tommy@moriahgroup.net



15 Smith Road, Suite 6004, Midland, TX 79705  
432.682.2510 | moriahbrokerageservices.com