

## PRIME RETAIL SPACE - MEDINA, OH



## SHOPPES AT RIVER STYX

5145 & 5155 Buehler's Dr., Medina, OH

### Property Features

- Join Buehler's Fresh Foods, Ace Hardware, Firestone, Chase & PNC
- Variety of suites ranging from 2,745 - 6,679 SF
- Pylon signage
- Signalized entrance
- Conveniently located 1 mile from I-71
- High visibility from Medina Rd. (SR-18)
- Over 27,000 VPD

### 3 SUITES AVAILABLE

SUITE #	SIZE
100/101	<b>LEASED</b>
103	2,745 SF
105	<b>LEASED</b>
106	1,872 SF
200	<b>LEASED</b>
300	6,679 SF

**Hiedi Winston**  
 +1 440 752 2617  
 hwinston@naipvc.com

NO WARRANTY OR REPRESENTATION, EXPRESS OR IMPLIED, IS MADE AS TO THE ACCURACY OF THE INFORMATION CONTAINED HEREIN, AND THE SAME IS SUBMITTED SUBJECT TO ERRORS, OMISSIONS, CHANGE OF PRICE, RENTAL OR OTHER CONDITIONS, PRIOR SALE, LEASE OR FINANCING, OR WITHDRAWAL WITHOUT NOTICE, AND OF ANY SPECIAL LISTING CONDITIONS IMPOSED BY OUR PRINCIPALS NO WARRANTIES OR REPRESENTATIONS ARE MADE AS TO THE CONDITION OF THE PROPERTY OR ANY HAZARDS CONTAINED THEREIN ARE ANY TO BE IMPLIED.

6060 Rockside Woods Blvd. , Suite 402  
 Independence, Ohio 44131  
 +1 216 831 3310  
 naipvc.com



5155 BUEHLERS	
100	Elevate Wrestling
102	AnyLabTest Now
103	Vacant
104	Great Clips
105	Honey Baked Ham
106	Vacant
107	Frontier Dental
108	Kumon

5141 BUEHLERS	
110	Q Spa / J. Grande Jewelers
110 A/B	Storage ONLY

5145 BUEHLERS	
200	Biggby Coffee

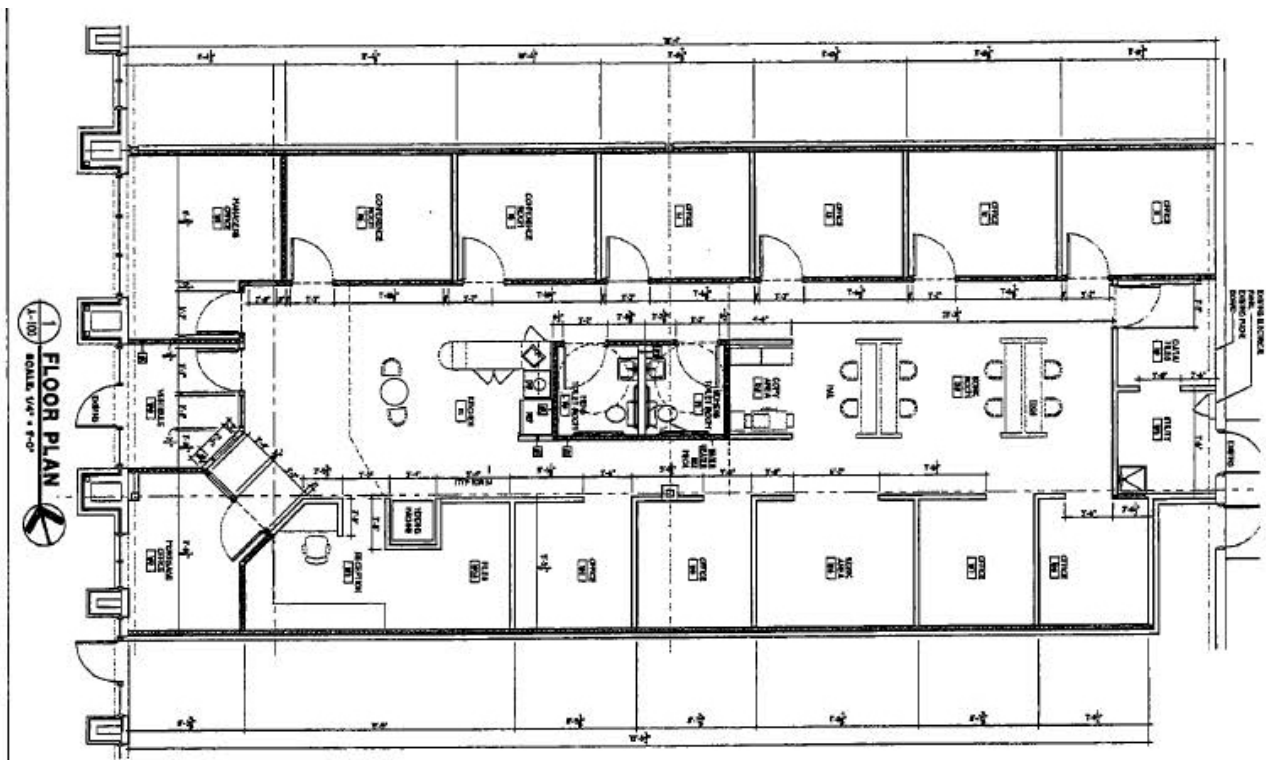
5121 BUEHLERS	
300	Vacant

5131 BUEHLERS	
	Firestone

NO WARRANTY OR REPRESENTATION, EXPRESS OR IMPLIED, IS MADE AS TO THE ACCURACY OF THE INFORMATION CONTAINED HEREIN, AND THE SAME IS SUBMITTED SUBJECT TO ERRORS, OMISSIONS, CHANGE OF PRICE, RENTAL OR OTHER CONDITIONS, PRIOR SALE, LEASE OR FINANCING, OR WITHDRAWAL WITHOUT NOTICE, AND OF ANY SPECIAL LISTING CONDITIONS IMPOSED BY OUR PRINCIPALS NO WARRANTIES OR REPRESENTATIONS ARE MADE AS TO THE CONDITION OF THE PROPERTY OR ANY HAZARDS CONTAINED THEREIN ARE ANY TO BE IMPLIED.

6060 Rockside Woods Blvd. , Suite 402  
 Independence, Ohio 44131  
 +1 216 831 3310  
 naipvc.com

## Suite 103 - 2,745 SF

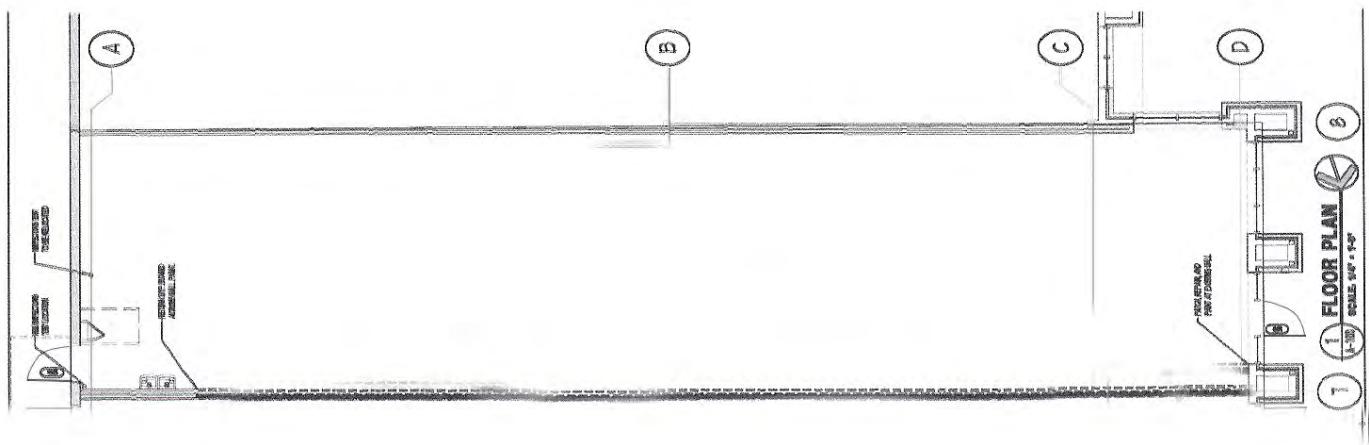


Hiedi Winston

+1 440 752 2617

hwinston@naipvc.com

## Suite 106 - 1,872 SF



**Hiedi Winston**

+1 440 752 2617

hwinston@naipvc.com

## Suite 300 - Stand Alone 6,649 SF



- *Maximum Seating 199 Persons*
- *Two Dining Areas*
- *Equipment Available for Purchase*

**Hiedi Winston**

+1 440 752 2617

hwinston@naipvc.com

## Suite 300 - Stand Alone 6,649 SF

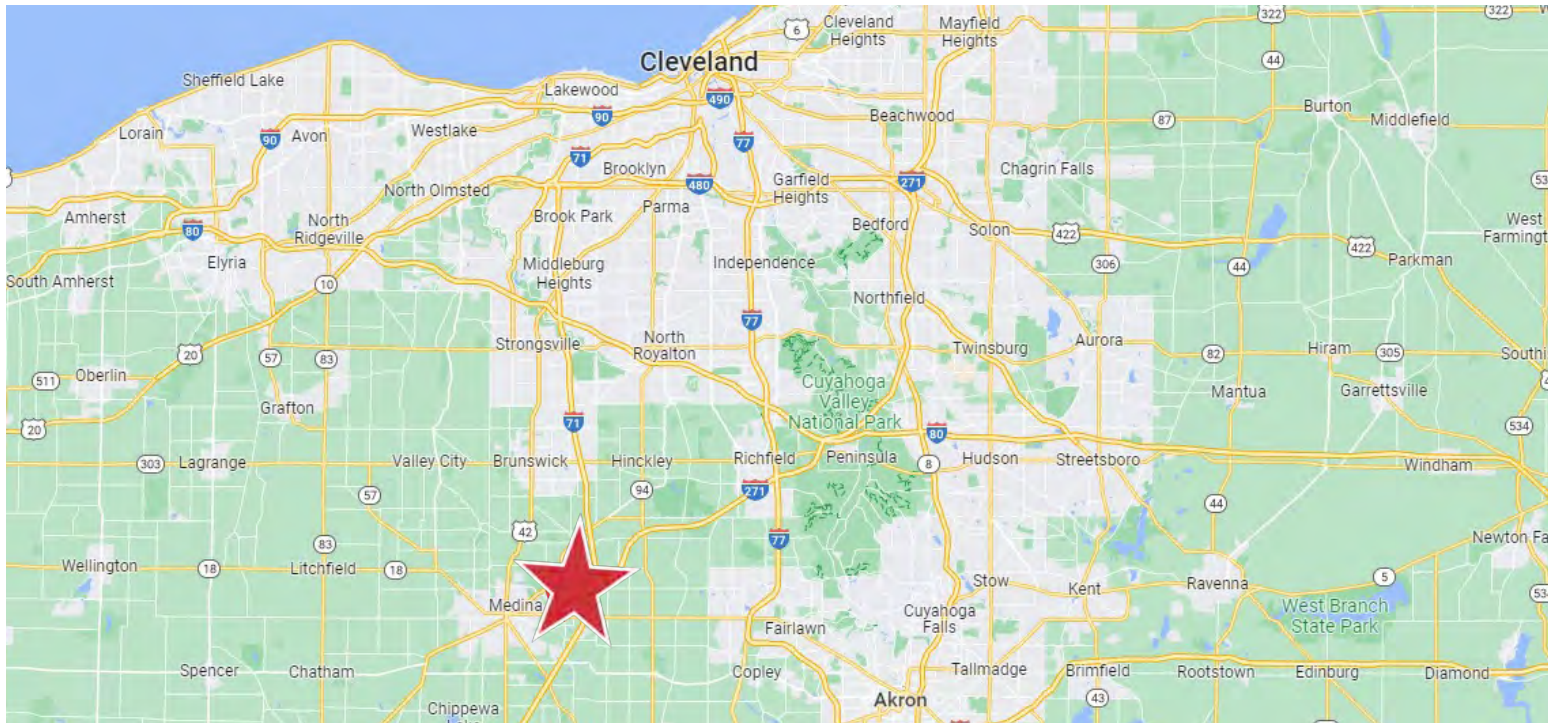
- Maximum Seating 199 Persons
- Two Dining Areas
- Equipment Available for Purchase



**Hiedi Winston**

+1 440 752 2617

hwinston@naipvc.com



**Hiedi Winston**  
+1 440 752 2617  
hwinston@naipvc.com

NO WARRANTY OR REPRESENTATION, EXPRESS OR IMPLIED, IS MADE AS TO THE ACCURACY OF THE INFORMATION CONTAINED HEREIN, AND THE SAME IS SUBMITTED SUBJECT TO ERRORS, OMISSIONS, CHANGE OF PRICE, RENTAL OR OTHER CONDITIONS, PRIOR SALE, LEASE OR FINANCING, OR WITHDRAWAL WITHOUT NOTICE, AND OF ANY SPECIAL LISTING CONDITIONS IMPOSED BY OUR PRINCIPALS NO WARRANTIES OR REPRESENTATIONS ARE MADE AS TO THE CONDITION OF THE PROPERTY OR ANY HAZARDS CONTAINED THEREIN ARE ANY TO BE IMPLIED.

6060 Rockside Woods Blvd. , Suite 402  
Independence, Ohio 44131  
+1 216 831 3310  
naipvc.com



Hiedi Winston  
 +1 440 752 2617  
 hwinston@naipvc.com

NO WARRANTY OR REPRESENTATION, EXPRESS OR IMPLIED, IS MADE AS TO THE ACCURACY OF THE INFORMATION CONTAINED HEREIN, AND THE SAME IS SUBMITTED SUBJECT TO ERRORS, OMISSIONS, CHANGE OF PRICE, RENTAL OR OTHER CONDITIONS, PRIOR SALE, LEASE OR FINANCING, OR WITHDRAWAL WITHOUT NOTICE, AND OF ANY SPECIAL LISTING CONDITIONS IMPOSED BY OUR PRINCIPALS NO WARRANTIES OR REPRESENTATIONS ARE MADE AS TO THE CONDITION OF THE PROPERTY OR ANY HAZARDS CONTAINED THEREIN ARE ANY TO BE IMPLIED.

6060 Rockside Woods Blvd. , Suite 402  
 Independence, Ohio 44131  
 +1 216 831 3310  
 naipvc.com



## KEY FACTS

2,942

Population



2.3  
Average Household Size

46.6

Median Age

\$104,296

Median Household Income

## BUSINESS



247

Total Businesses



2,329

Total Employees

## INCOME



\$104,296

Median Household Income



\$57,531

Per Capita Income



\$327,352

Median Net Worth

## EDUCATION

2%

No High School Diploma



16%

High School Graduate



24%

Some College



59%

Bachelor's/Grad/Pr of Degree

## EMPLOYMENT



82%

White Collar



11%

Blue Collar



8%

Services

1.8%

Unemployment Rate

## Households By Income

The largest group: \$100,000 - \$149,999 (26.4%)

The smallest group: \$25,000 - \$34,999 (2.5%)

Indicator ▲	Value	Diff	
<\$15,000	3.2%	-1.3%	<div style="width: 100%;"></div>
\$15,000 - \$24,999	4.7%	-0.3%	<div style="width: 100%;"></div>
\$25,000 - \$34,999	2.5%	-4.4%	<div style="width: 100%;"></div>
\$35,000 - \$49,999	9.4%	-2.3%	<div style="width: 100%;"></div>
\$50,000 - \$74,999	13.5%	-3.8%	<div style="width: 100%;"></div>
\$75,000 - \$99,999	13.0%	-0.5%	<div style="width: 100%;"></div>
\$100,000 - \$149,999	26.4%	+4.4%	<div style="width: 100%;"></div>
\$150,000 - \$199,999	12.9%	+2.8%	<div style="width: 100%;"></div>
\$200,000+	14.4%	+5.3%	<div style="width: 100%;"></div>

Bars show deviation from Medina County

**Hiedi Winston**

+1 440 752 2617

hwinston@naipvc.com

## KEY FACTS

31,203

Population



2.5

Average Household Size

41.1

Median Age

\$89,416

Median Household Income

## BUSINESS



1,495

Total Businesses



15,402

Total Employees

## INCOME



\$89,416

Median Household Income



\$47,022

Per Capita Income



\$252,309

Median Net Worth

## EDUCATION

3%

No High School Diploma



22%

High School Graduate



28%

Some College



48%

Bachelor's/Grad/Pr of Degree

## EMPLOYMENT



75%

White Collar



16%

Blue Collar



9%

Services

1.8%

Unemployment Rate

## Households By Income

The largest group: \$100,000 - \$149,999 (22.7%)

The smallest group: <\$15,000 (3.8%)

Indicator ▲	Value	Diff	
<\$15,000	3.8%	-0.7%	<div style="width: 3.8%;"></div>
\$15,000 - \$24,999	4.5%	-0.5%	<div style="width: 4.5%;"></div>
\$25,000 - \$34,999	5.9%	-1.0%	<div style="width: 5.9%;"></div>
\$35,000 - \$49,999	11.7%	0	<div style="width: 11.7%;"></div>
\$50,000 - \$74,999	16.4%	-0.9%	<div style="width: 16.4%;"></div>
\$75,000 - \$99,999	12.1%	-1.4%	<div style="width: 12.1%;"></div>
\$100,000 - \$149,999	22.7%	+0.7%	<div style="width: 22.7%;"></div>
\$150,000 - \$199,999	11.7%	+1.6%	<div style="width: 11.7%;"></div>
\$200,000+	11.2%	+2.1%	<div style="width: 11.2%;"></div>

Bars show deviation from Medina County

**Hiedi Winston**

+1 440 752 2617

hwinston@naipvc.com

## KEY FACTS

55,444

Population



Average Household Size

40.8

Median Age

\$88,603

Median Household Income

## BUSINESS



2,405

Total Businesses



28,523

Total Employees

## INCOME



\$88,603

Median Household Income



\$45,846

Per Capita Income



\$247,812

Median Net Worth

## EDUCATION

3%

No High School Diploma



25%

High School Graduate



27%

Some College



45%

Bachelor's/Grad/Pr of Degree

## EMPLOYMENT



72%

White Collar



19%

Blue Collar



9%

Services

2.0%

Unemployment Rate

## Households By Income

The largest group: \$100,000 - \$149,999 (22.3%)

The smallest group: <\$15,000 (4.4%)

Indicator ▲	Value	Diff	
<\$15,000	4.4%	-0.1%	
\$15,000 - \$24,999	4.9%	-0.1%	
\$25,000 - \$34,999	6.4%	-0.5%	
\$35,000 - \$49,999	11.8%	+0.1%	
\$50,000 - \$74,999	14.9%	-2.4%	
\$75,000 - \$99,999	12.5%	-1.0%	
\$100,000 - \$149,999	22.3%	+0.3%	
\$150,000 - \$199,999	11.9%	+1.8%	
\$200,000+	10.9%	+1.8%	

Bars show deviation from Medina County

Hiedi Winston

+1 440 752 2617

hwinston@naipvc.com