

FOR SUBLEASE

# KAYSVILLE CENTER STREET SUBLEASE



**MOUNTAIN WEST**  
COMMERCIAL REAL ESTATE

**CHRIS FALK, CCIM, SIOR**  
cfalk@mwcre.com  
direct 385.429.5500  
[View Profile](#)

**BRAXTON WILLIE, CCIM**  
bwillie@mwcre.com  
direct 385.429.5501  
[View Profile](#)

## PROPERTY DETAILS

2 EAST CENTER STREET, KAYSVILLE, UTAH 84037

**LEASE RATE: \$17.00/SF FULL SERVICE**

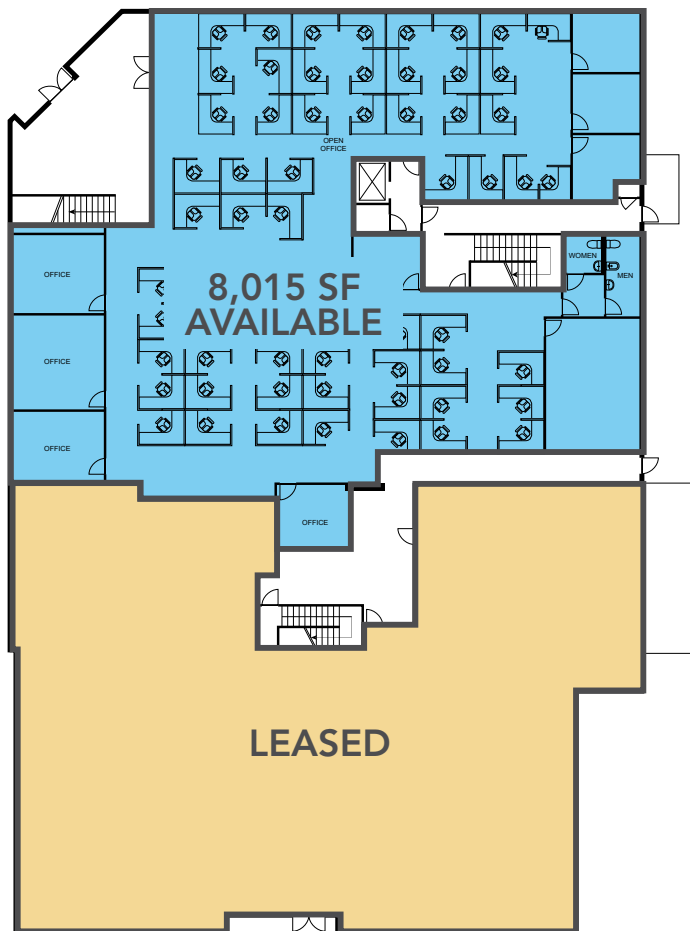
- 17,506 SF available
  - » 8,015 SF main floor
  - » 3,731 SF upper floor
  - » 4,453 SF upper floor
  - » 1,307 SF upper floor (training room)
- Master LED: September 30, 2025
- Floor to ceiling glass entrance
- Numerous amenities and services located within walking distance
- Generous daytime parking
- Easy access to I-15
- 17,000 cars/day on Main Street

**FULL SERVICE  
COMMERCIAL REAL ESTATE**  
1755 East 1450 South  
Clearfield, UT 84015  
Office 801.578.5580  
[www.mwcre.com](http://www.mwcre.com)

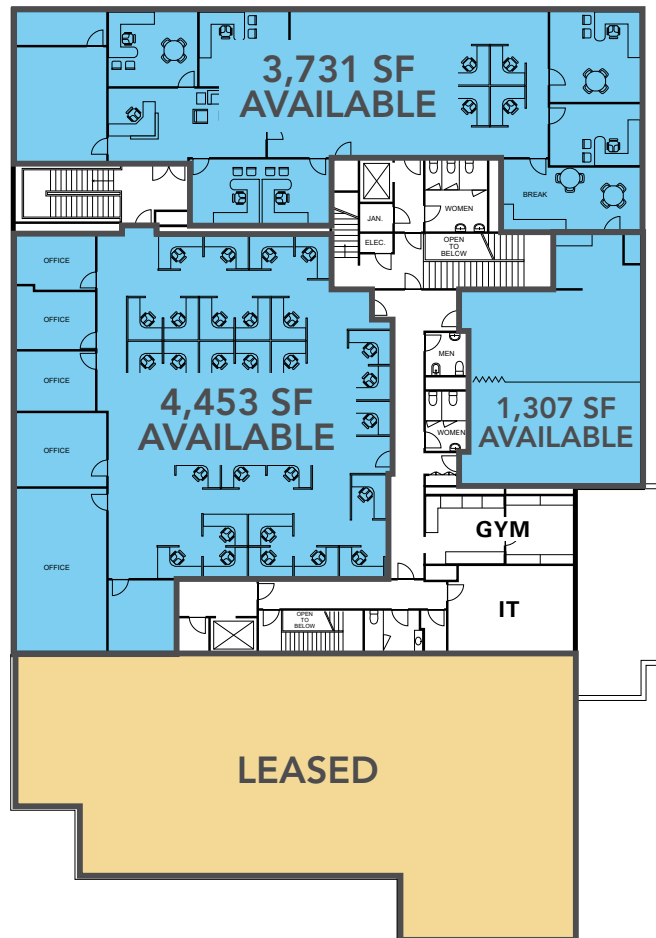


**MOUNTAIN WEST**  
COMMERCIAL REAL ESTATE

### FIRST FLOOR



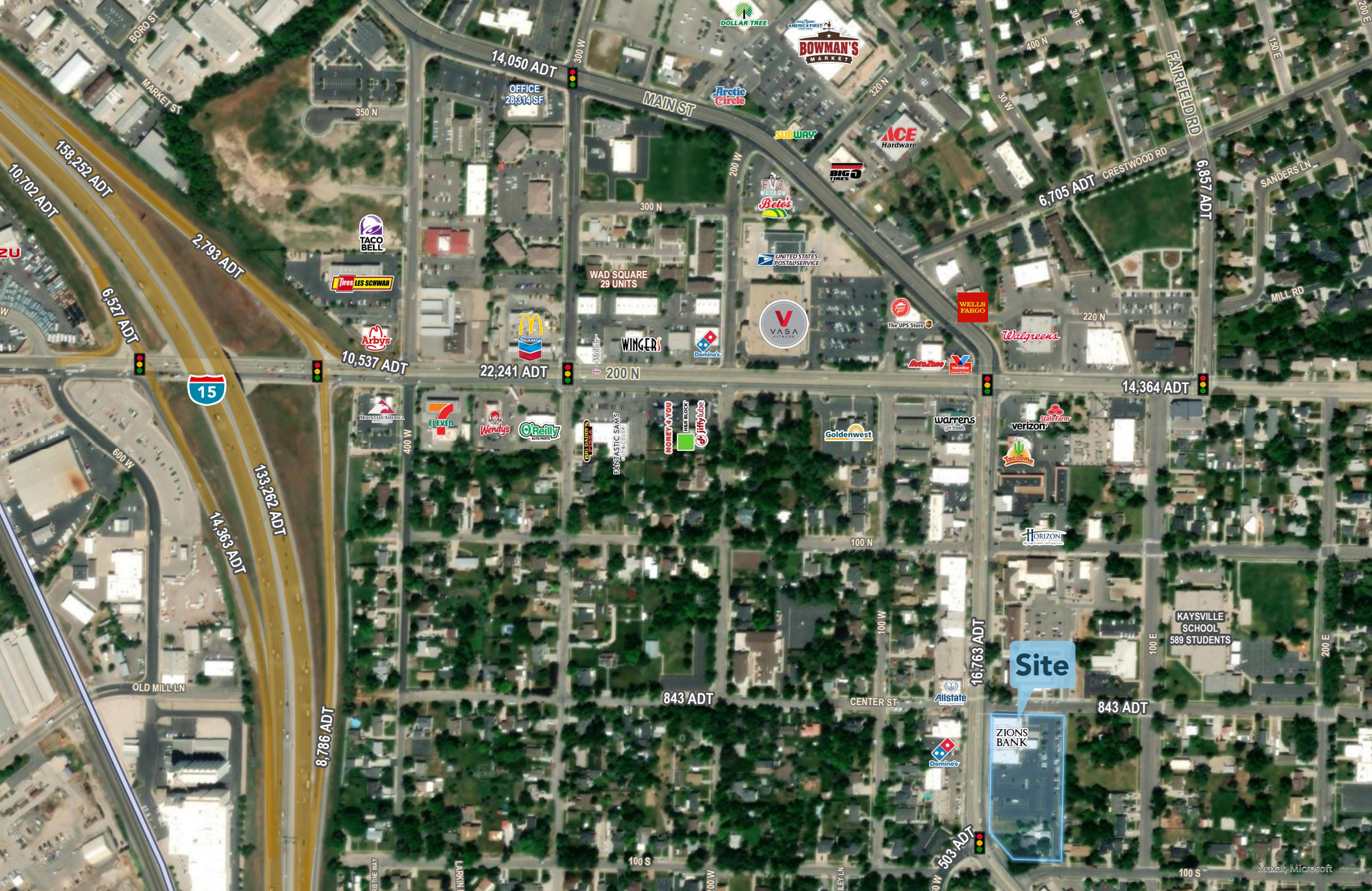
### SECOND FLOOR



**CHRIS FALK, CCIM, SIOR**  
cfalk@mwcre.com  
direct 385.429.5500  
[View Profile](#)

**BRAXTON WILLIE, CCIM**  
bwillie@mwcre.com  
direct 385.429.5501  
[View Profile](#)

**FULL SERVICE  
COMMERCIAL REAL ESTATE**  
1755 East 1450 South  
Clearfield, UT 84015  
Office 801.578.5580  
[www.mwcre.com](http://www.mwcre.com)



**MOUNTAIN WEST**  
COMMERCIAL REAL ESTATE

**CHRIS FALK, CCIM, SIOR**  
cfalk@mwcre.com  
direct 385.429.5500  
[View Profile](#)

**BRAXTON WILLIE, CCIM**  
bwillie@mwcre.com  
direct 385.429.5501  
[View Profile](#)

**FULL SERVICE  
COMMERCIAL REAL ESTATE**  
1755 East 1450 South  
Clearfield, UT 84015  
Office 801.578.5580  
[www.mwcre.com](http://www.mwcre.com)