



Industrial Flex Space

PROPERTY OVERVIEW

- » The space includes a beautiful, bright office area over 2 levels with lots of natural light.
- » Functional warehouse with sumps and oversize loading doors.
- » 3 assigned parking stalls and additional on-street parking available.
- » Pylon signage available on 114 Avenue SE.
- » Ideally located with easy access to Deerfoot Trail, Barlow Trail and Stoney Trail.
- » Part of a well-maintained multi-tenant building, developed, owned, and managed by Telsec Property Corporation.

LEASE DETAILS

UNIT 425	±3,156 SF
LEASE RATE	Market
OP COST	\$4.10 PSF
PROPERTY TAX	\$4.80 PSF
LEASE TERM	5 Years
ZONING	I-G (Industrial General)
LOADING	1 Drive-In Door (12' x 14')
CEILING HEIGHT	22' Clear (TBV)
POWER	208/120V, 3Phase, 100Amp
PARKING	7 Assigned stalls & street parking
OCCUPANCY	Summer 2026

November 25, 2025

For more information,
please contact:



Kaile Landry
+1 403 669 3050
klandry@naiadvent.com



Jennifer Myles
+1 403 975 2616
jmyles@naiadvent.com



Brody Butchart
+1 403 389 7857
bbutchart@naiadvent.com



Jamie Coulter, SIOR
+1 403 835 1535
jcoulter@naiadvent.com



STRATEGIC LOCATION

Located within the East Shepard Industrial community, in the established Eastlake Business Park, this site offers excellent access to Deerfoot Trail, Barlow Trail, Stoney Trail, and 130th Ave SE. Nearby amenities include South Trail Crossing, Shepard Regional Centre, Quarry Park Market, Deerfoot Inn & Casino, and a wide range of dining, retail, fitness, and hotel options — all within minutes.

For more information,
please contact:



Kaile Landry
+1 403 669 3050
klandry@naiadvent.com



Jennifer Myles
+1 403 975 2616
jmyles@naiadvent.com

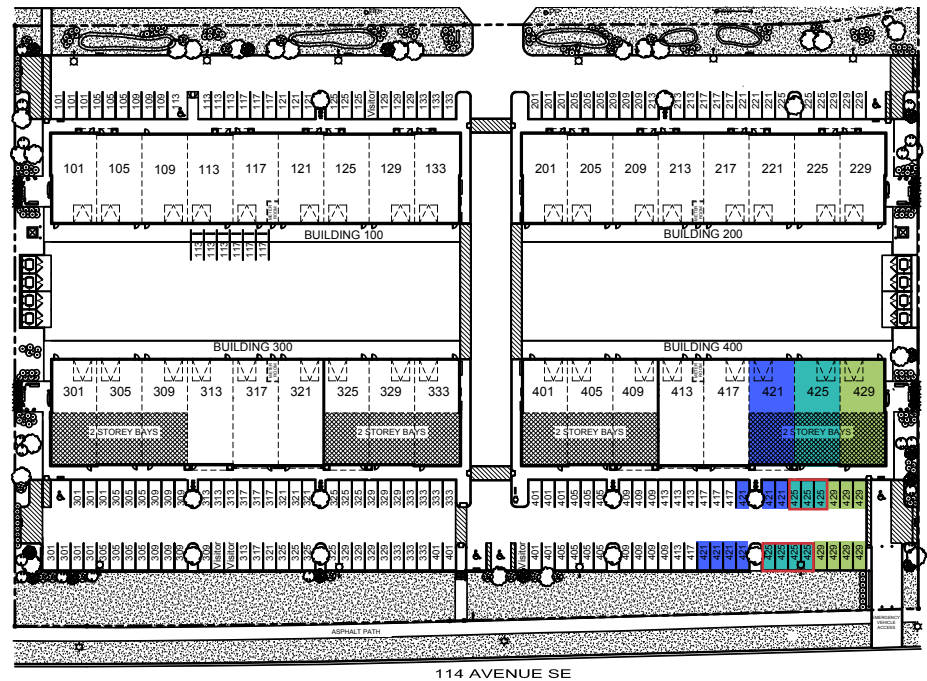


Brody Butchart
+1 403 389 7857
bbutchart@naiadvent.com

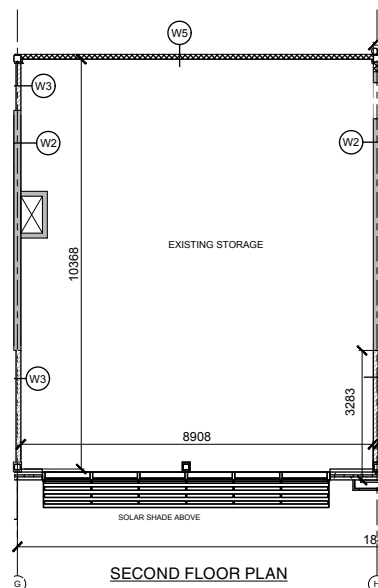
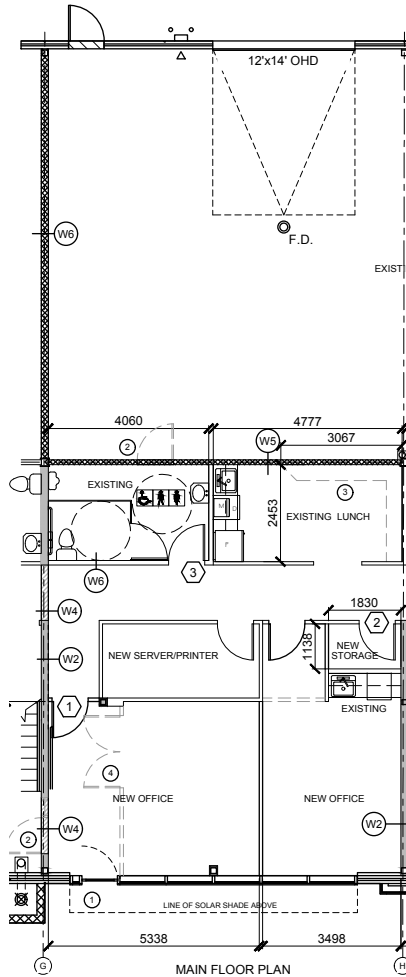


Jamie Coulter, SIOR
+1 403 835 1535
jcoulter@naiadvent.com

PARKING PLAN



FLOOR PLAN



THIS BROCHURE IS INTENDED FOR INFORMATION PURPOSES ONLY AND SHOULD NOT BE RELIED UPON FOR ACCURATE FACTUAL INFORMATION BY THE RECIPIENTS HEREOF. THE INFORMATION CONTAINED HEREIN IS BASED ON INFORMATION WHICH ADVENT COMMERCIAL REAL ESTATE CORP. OPERATING AS NAI ADVENT DEEMS RELIABLE, HOWEVER, ADVENT COMMERCIAL REAL ESTATE CORP. OPERATING AS NAI ADVENT ASSUMES NO RESPONSIBILITY FOR THE DEGREE OF ACCURACY OF SUCH INFORMATION, NOR DOES ADVENT COMMERCIAL REAL ESTATE CORP. OPERATING AS NAI ADVENT REPRESENT OR WARRANT THE INFORMATION CONTAINED HEREIN. RECIPIENTS HEREOF SHOULD CONDUCT THEIR OWN INVESTIGATIONS TO DETERMINE THE ACCURACY OF INFORMATION CONTAINED HEREIN. THE INFORMATION CONTAINED HEREIN IS SUBJECT TO CHANGE WITHOUT NOTICE. NAI ADVENT. ALL RIGHTS RESERVED. NO REPRODUCTION, DISTRIBUTION, OR TRANSMISSION OF THE COPYRIGHTED MATERIALS AT THIS SITE IS PERMITTED WITHOUT THE WRITTEN PERMISSION OF NAI ADVENT UNLESS OTHERWISE SPECIFIED. A LICENSED ASSOCIATE OF NAI ADVENT IS A PRINCIPAL OF THE OWNER OF THE PROPERTY.

For more information,
please contact:



Kaile Landry

+1 403 669 3050
klandry@naiadvent.com



Brody Butchart

+1 403 389 7857
bbutchart@naiadvent.com



Jennifer Myles

+1 403 975 2616
jmyles@naiadvent.com



Jamie Coulter, SIOR

+1 403 835 1535
[jcoulter@naiadvent.com](mailto:jcoultier@naiadvent.com)