

**FOR SALE OR LEASE****1800 NORTH**

# 4.44 ACRES WITH A 4,000 SF SHOP IN FARR WEST

## Property Highlights

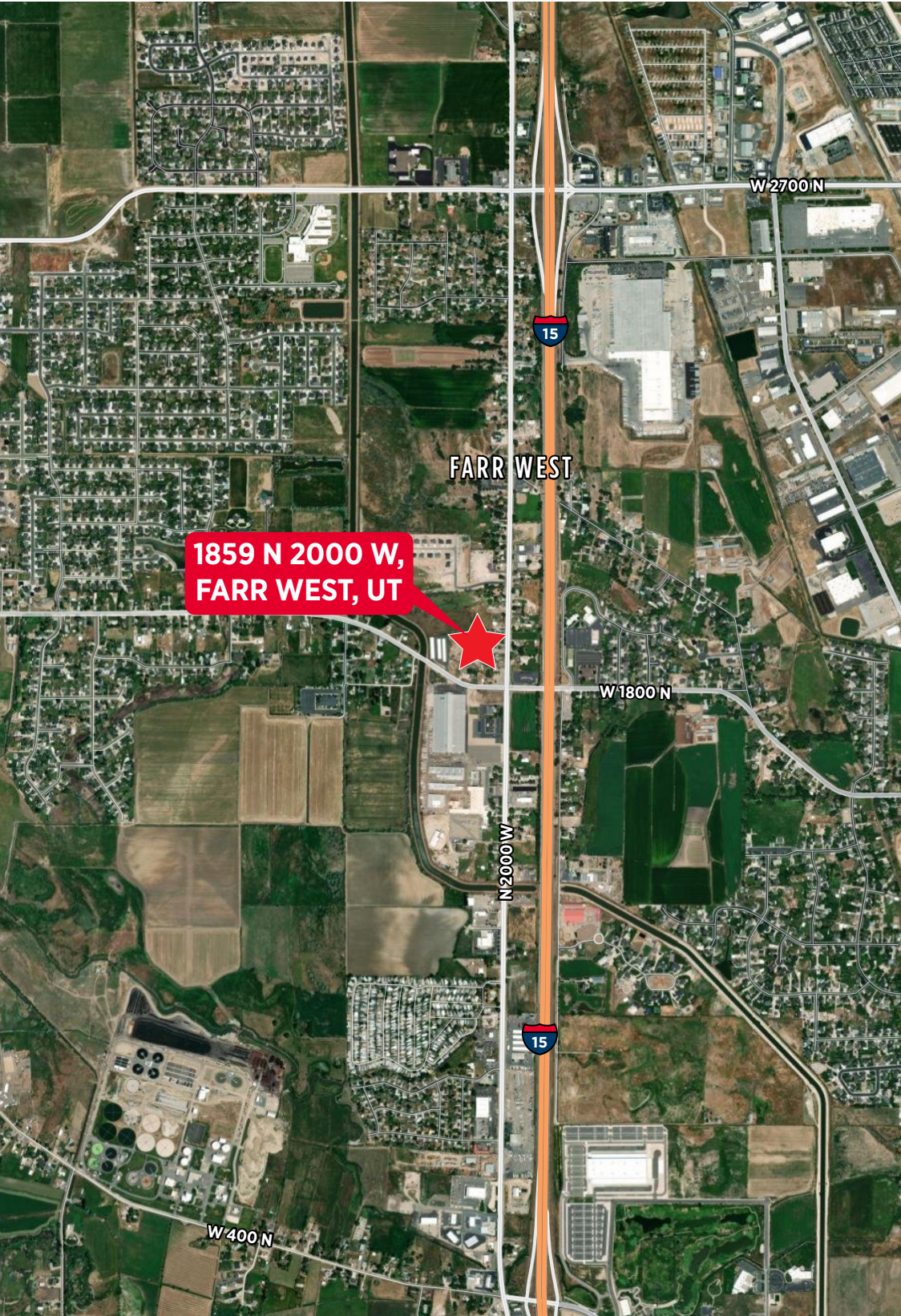
- Acres: 4.44 Acres
- Bldg Size: 4,000 SF Shop
- Doors: 5 Ground Level Doors
- Parcel Numbers:
  - 15-005-0030 - Zoned C-2
  - 15-005-0031 - Zoned A-1
- Prime Location
- Call for Pricing



**Julie Brown**  
**Senior Associate**  
+1 801 644 4946  
julie.brown@cushwake.com

**April Hartzell**  
**Associate**  
+1 801 814 4273  
april.hartzell@cushwake.com

[cushmanwakefield.com](http://cushmanwakefield.com)



# Wasatch Valley Excavation

1859 North 2000 West, Farr West, UT



**Julie Brown**  
Senior Associate  
+1 801 644 4946  
[julie.brown@cushwake.com](mailto:julie.brown@cushwake.com)

**April Hartzell**  
Associate  
+1 801 814 4273  
[april.hartzell@cushwake.com](mailto:april.hartzell@cushwake.com)

 **CUSHMAN & WAKEFIELD**  
[cushmanwakefield.com](https://cushmanwakefield.com)

©2024 Cushman & Wakefield. All rights reserved. The information contained in this communication is strictly confidential. This information has been obtained from sources believed to be reliable but has not been verified. NO WARRANTY OR REPRESENTATION, EXPRESS OR IMPLIED, IS MADE AS TO THE CONDITION OF THE PROPERTY (OR PROPERTIES) REFERENCED HEREIN OR AS TO THE ACCURACY OR COMPLETENESS OF THE INFORMATION CONTAINED HEREIN, AND SAME IS SUBMITTED SUBJECT TO ERRORS, OMISSIONS, CHANGE OF PRICE, RENTAL OR OTHER CONDITIONS, WITHDRAWAL WITHOUT NOTICE, AND TO ANY SPECIAL LISTING CONDITIONS IMPOSED BY THE PROPERTY OWNER(S). ANY PROJECTIONS, OPINIONS OR ESTIMATES ARE SUBJECT TO UNCERTAINTY AND DO NOT SIGNIFY CURRENT OR FUTURE PROPERTY PERFORMANCE.