



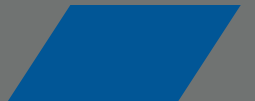
MID AMERICA PLAZA

— Oakbrook Terrace —



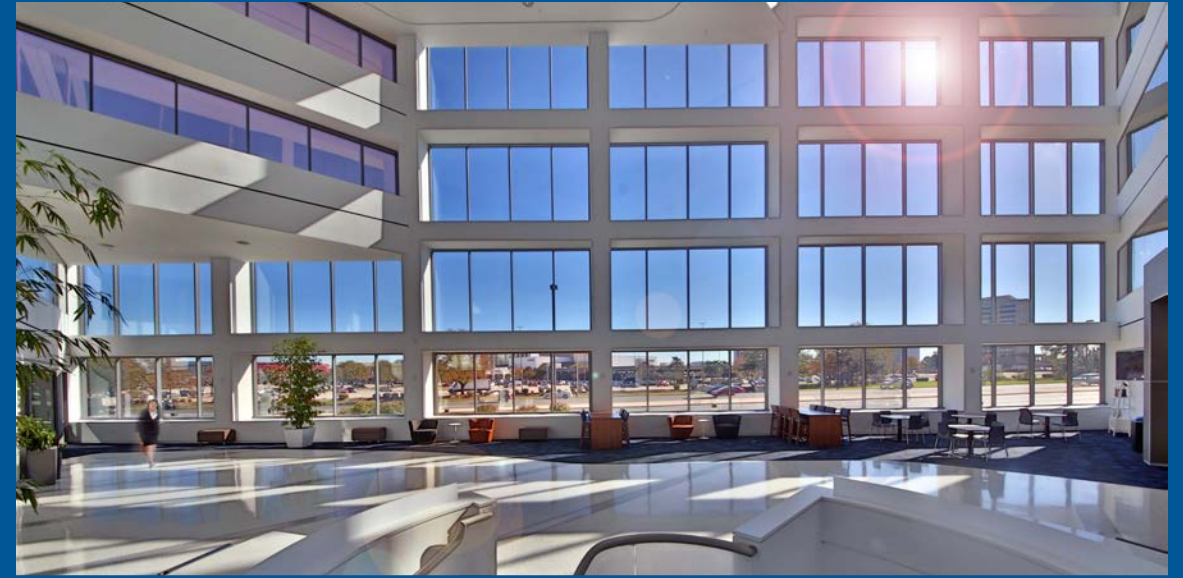
## CLASSICALLY COOL STYLE

Iconic architecture, designed with mid-century modern lines, makes a stunning first impression while the ideal location places Mid America Plaza in a class of its own in the suburban Chicago market.



# MODERN UPGRADES

Mid America Plaza is where life and work intersect. In addition to outstanding workspaces and reimagined amenities, expect a dynamic work environment that helps recruit top talent and boost employee retention. Whether you're looking for creative inspiration, time to connect with colleagues or a spot to unwind, Mid America Plaza delivers.





## THE RIGHT AMENITIES

Fully-equipped with a conference center, multiple WiFi-enabled tenant lounges and a complete fitness center housing locker rooms and a sports simulator, Mid America Plaza offers a truly unique tenant experience. Two on-site dining options—the lobby cafe and Ditka's high-end restaurant and in-suite catering—combined with the convenience of more than 1,000 covered parking spaces, and the abundant shopping and entertainment in the surrounding area highlight Mid America Plaza's remarkable work-play environment.

# A PREMIER OFFICE LOCATION

Situated at the corner of Route 83 and 22nd Street in Oakbrook Terrace, Mid America Plaza is surrounded by food, beverage and retail options. With convenient access to the entire metropolitan area via the Reagan Expressway (I-88), Mid America Plaza is suburban Chicago's premier office destination.





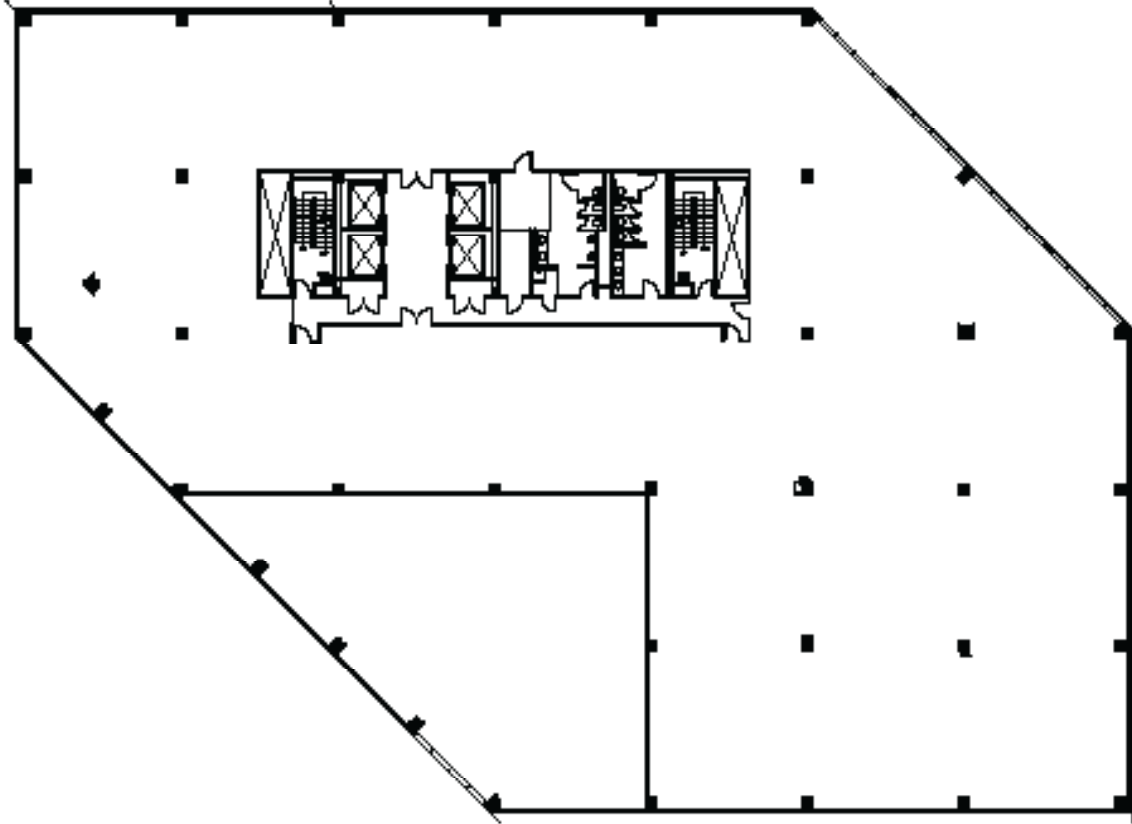
# EVERYTHING WITHIN REACH

Located approximately 16 miles from the Chicago CBD, 15 miles from O'Hare and 15 miles from Midway airport, Mid America Plaza is at the heart of a highly-developed commercial hub primarily comprised of retail, office, and hotel uses.

# SIGNAGE OPPORTUNITIES

Mid America Plaza's premier location provides exceptional visibility for your brand. Building-top signage and monument signage are available, offering exposure to a combined traffic count of well over 100,000 vehicles per day.





## AN OPTIMIZED FLOORPLAN

Natural light and open, panoramic views accent each floor, providing the ideal platform for open-plan users as well as perimeter private offices.

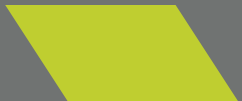




# AN EQUUS PROPERTY

With oversight of more than 17 million square feet in over 100 properties under management, Equus Capital Partners Ltd. prides itself on creating unparalleled business environments for its tenants and their guests. The organization is detailed-oriented as required by its mission, and committed to excellence overall.

The management team collectively possesses more than 100 years of experience in the operation of commercial real estate. Many members of the staff have achieved Certified Property Management designations from the Institute of Real Estate Management (IREM®), the leading community of real estate managers.



For leasing information, please contact:

**Fred Ishler**

Principal

[fred.ishler@avisonyoung.com](mailto:fred.ishler@avisonyoung.com)

D | 312.796.0368

C | 630.408.9366

**AVISON  
YOUNG**

Owned by:

OWNED BY AN AFFILIATE OF



Managed by:

