

FIRST FLOOR PLAN

1



LEGEND

- CLOSET ID
- PATCH PANEL
- CABLE PORT
- DROP LOCATION
- FLOOR DROP LOCATION
- CEILING DROP LOCATION
- CABLE COILED IN CEILING
- CLOSET LOCATION

IC2S Contact:  
Jonathan Prutzman  
Ext: 226  
E-mail: jonathanp@ic2s.com

1555 Brooks Avenue  
Rochester, NY 14624  
Phone: 585/436-1850  
Fax: 585/436-8142

Integrated Cabling &  
Communication  
Systems



**MASON  
SELKOWITZ  
MARKETING**

SITE INFORMATION  
MASON SELKOWITZ  
MARKETING  
400 WHITNEY ROAD  
FAIRPORT N.Y.  
14526

SITE CONTACT:  
DENNIS WURSTER

Date: 2.15.05 JB# 6649

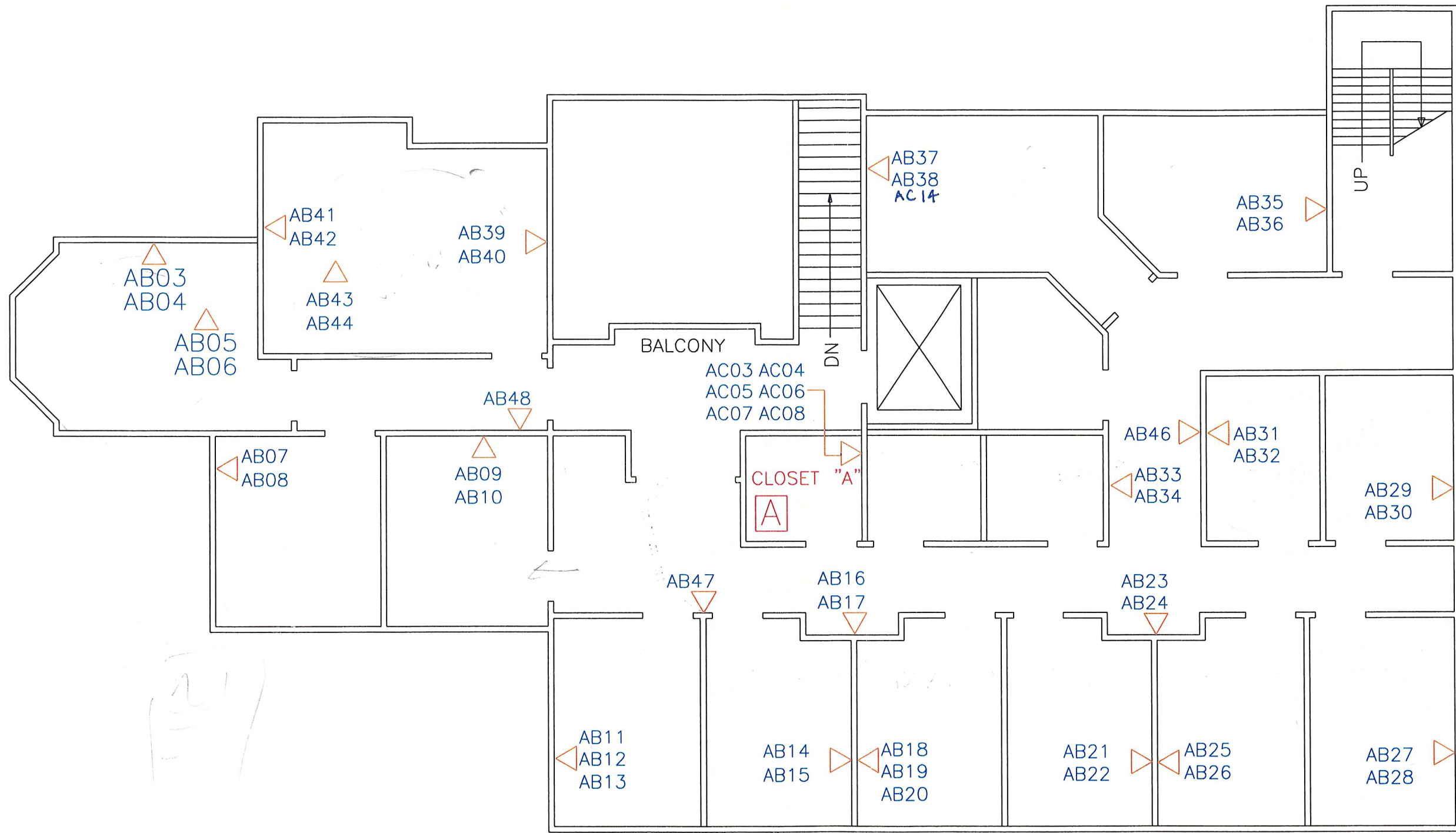
File: Mason Selkowitz Marketing  
Fairport NY D1.dwg

SCALE: NTS

SHEET: 1 OF 2 TOTAL

DWG NO.

**D1.1**



**LEGEND**

- CLOSET ID
- PATCH PANEL
- CABLE PORT
- DROP LOCATION
- FLOOR DROP LOCATION
- CEILING DROP LOCATION
- CABLE COILED IN CEILING
- CLOSET LOCATION

**SECOND FLOOR PLAN**

1



**MASON SELKOWITZ MARKETING**

**SITE INFORMATION**  
 MASON SELKOWITZ MARKETING  
 400 WHITNEY ROAD  
 FAIRPORT N.Y.  
 14526

**SITE CONTACT:**  
 DENNIS WURSTER

IC2S Contact:  
 Jonathan Prutzman  
 Ext: 226  
 E-mail: jonathanp@ic2s.com

1555 Brooks Avenue  
 Rochester, NY 14624  
 Phone: 585/436-1850  
 Fax: 585/436-8142

Integrated Cabling & Communication Systems



Date: 2.15.05 JB# 6649

File: Mason Selkowitz Marketing Fairport NY D1.dwg

SCALE: NTS

SHEET: 2 OF 2 TOTAL

DWG NO. **D1.2**