

DOWNTOWN RETAIL WITH SALON BUILDOUT

610 South Pineapple Avenue, Sarasota, FL 34236



PROPERTY OVERVIEW

Spectacular retail space currently built out for a hair salon. Walk into the spacious multiuse reception area which can accommodate 7 hairstyling stations along with retail display area. High ceilings and a mezzanine overlook. The adjacent room includes 4 hair washing basins, coloring station and suspended hairdryers.

The space is also perfect for other retail use. Join the many shops, galleries, coffee shops and juice bars in Bruns Court. Convenient to downtown, Selby Gardens and Southside Village. Onsite parking.

PROPERTY SUMMARY

Lease Rate:	\$32.00 SF/yr
NNN:	\$7.80/SF
Available SF:	2,540 SF
Year Built:	1950
Building Size:	2,540 SF
Zoning:	DTC



MICHELE FULLER
941.228.4189
michele@ian-black.com



HEIDI HABER
941.323.0557
heidi@ian-black.com

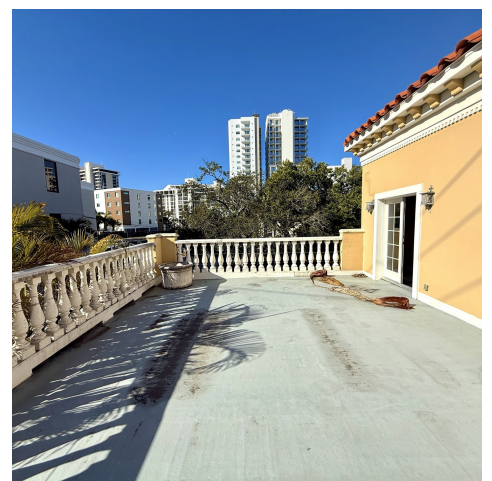
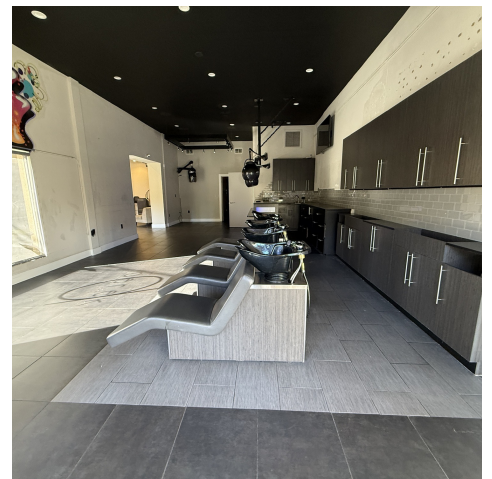
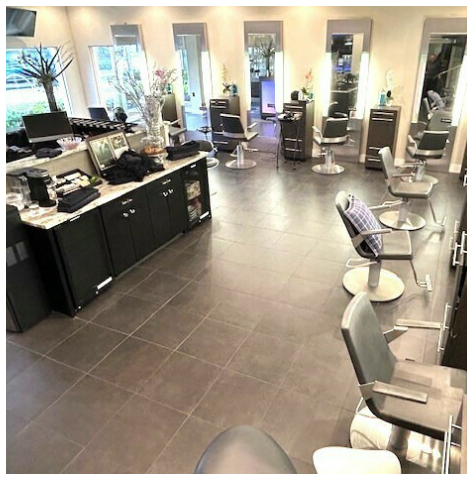
IAN BLACK
REALESTATE
THE PLACE FOR SPACE

DOWNTOWN RETAIL WITH SALON BUILDOUT

ADDITIONAL PHOTOS

Downtown Retail with Salon buildout

610 South Pineapple Avenue, Sarasota, FL 34236



MICHELE FULLER
941.228.4189
michele@ian-black.com



HEIDI HABER
941.323.0557
heidi@ian-black.com

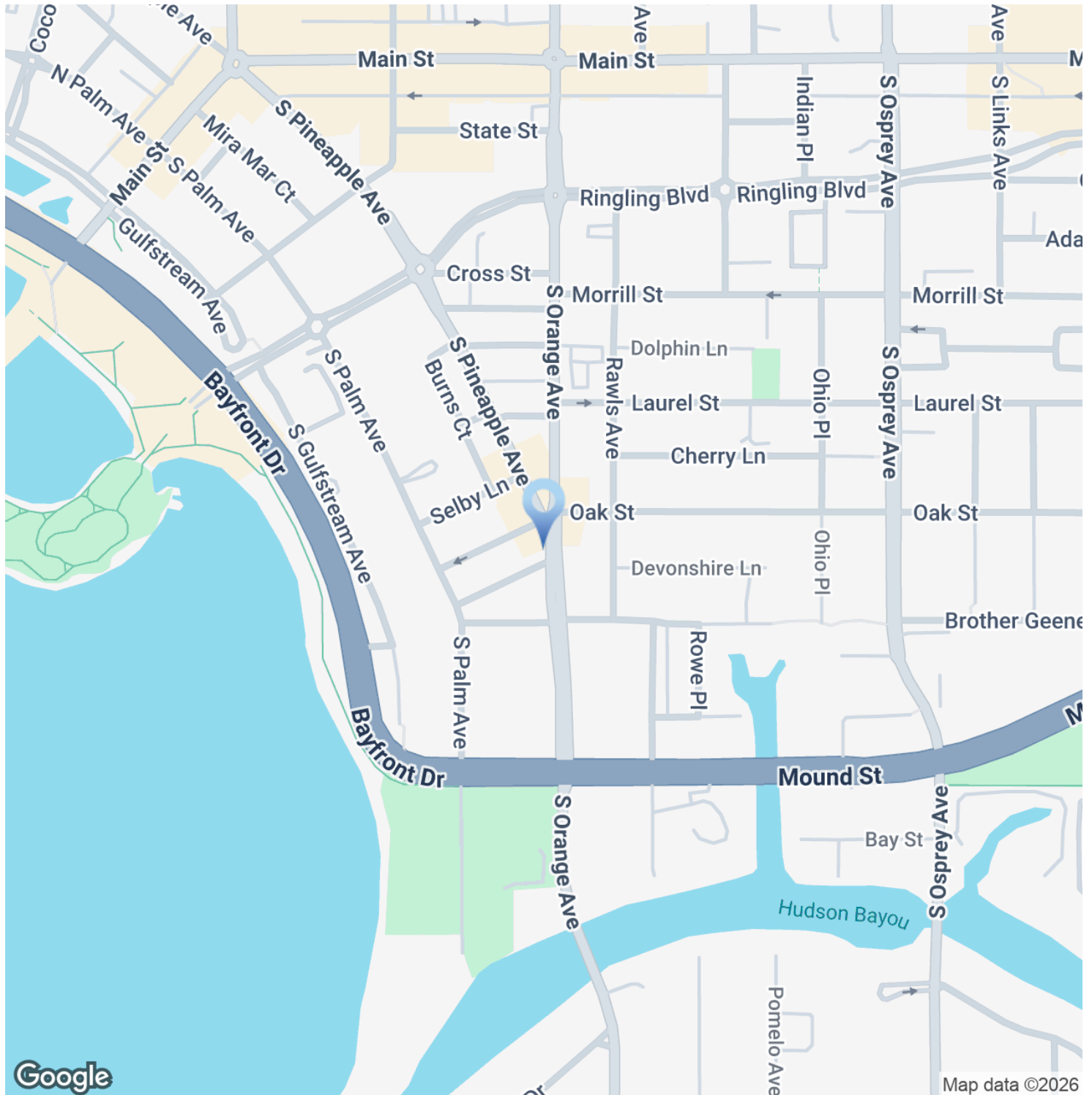
IAN BLACK
REALESTATE
THE PLACE FOR SPACE

DOWNTOWN RETAIL WITH SALON BUILDOUT

LOCATION MAP

Downtown Retail with Salon buildout

610 South Pineapple Avenue, Sarasota, FL 34236



MICHELE FULLER
941.228.4189
michele@ian-black.com



HEIDI HABER
941.323.0557
heidi@ian-black.com

IAN BLACK
REAL ESTATE
THE PLACE FOR SPACE

Information deemed reliable but not guaranteed. Prices subject to change without notice.

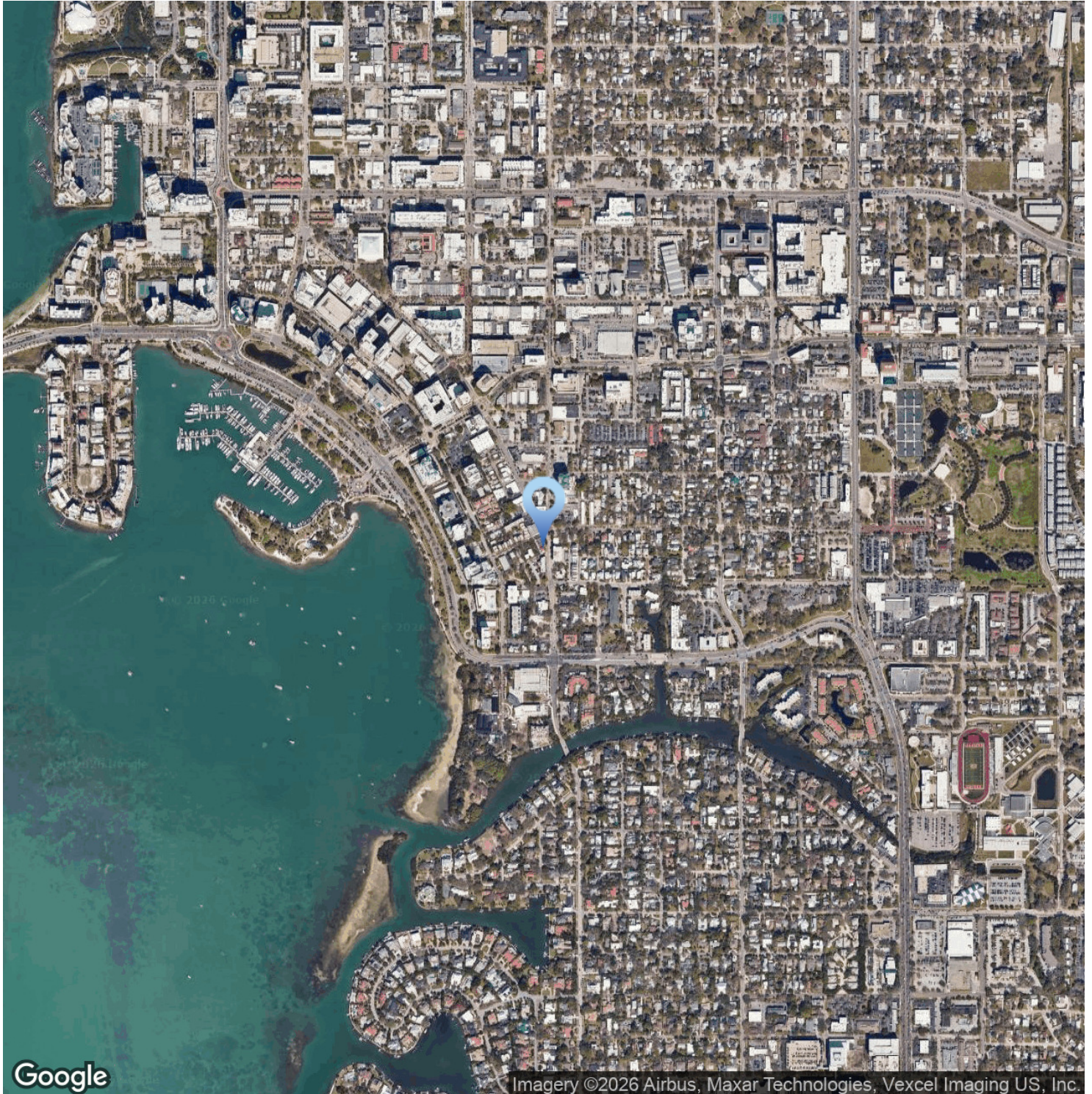
Ian Black Real Estate | 1 South School Avenue | Suite 600 | Sarasota, FL 34237 | 941.906.8688 | ian-black.com

DOWNTOWN RETAIL WITH SALON BUILDOUT

AERIAL MAP

Downtown Retail with Salon buildout

610 South Pineapple Avenue, Sarasota, FL 34236



MICHELE FULLER
941.228.4189
michele@ian-black.com



HEIDI HABER
941.323.0557
heidi@ian-black.com

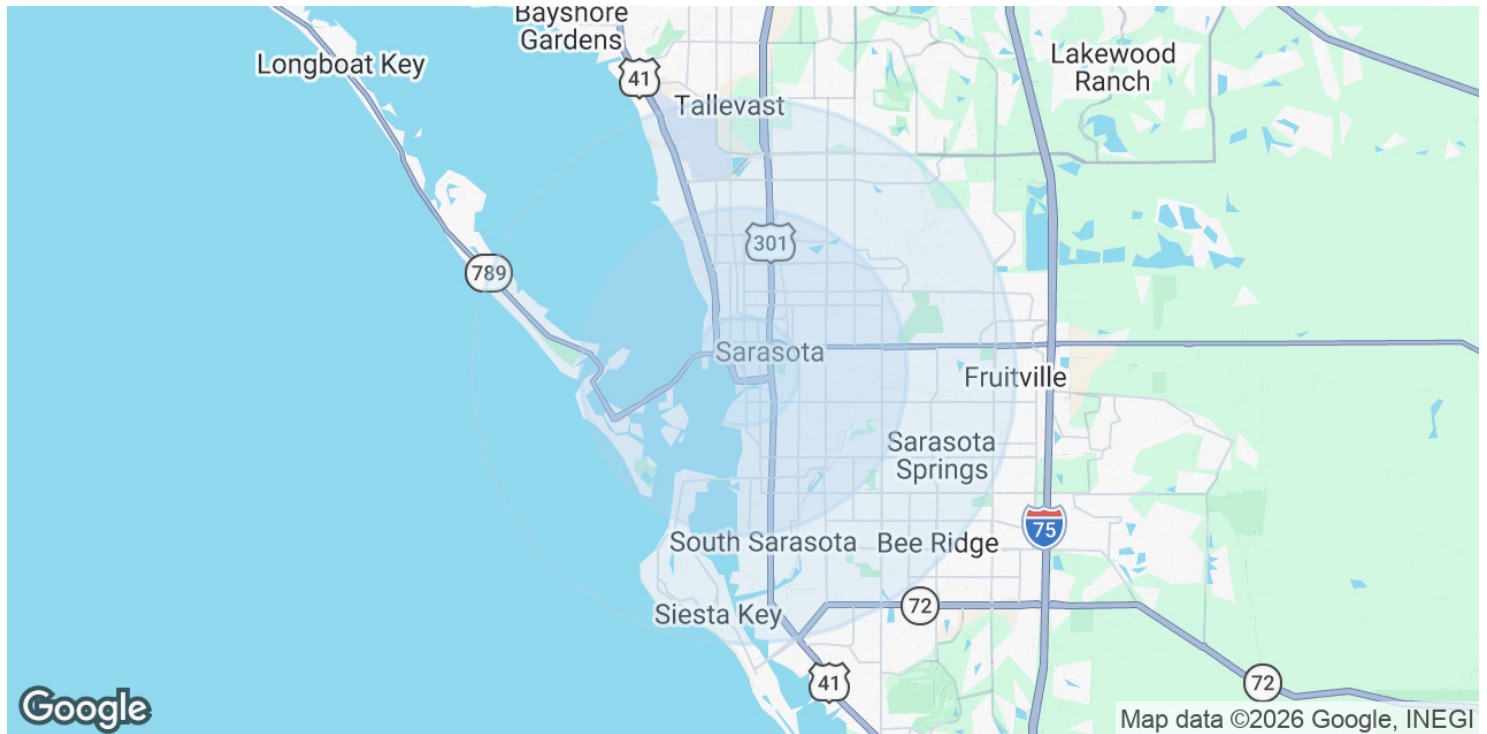
IAN BLACK
REAL ESTATE
THE PLACE FOR SPACE

DOWNTOWN RETAIL WITH SALON BUILDOUT

DEMOGRAPHICS MAP & REPORT

Downtown Retail with Salon buildout

610 South Pineapple Avenue, Sarasota, FL 34236



POPULATION	1 MILE	3 MILES	5 MILES
Total Population	13,410	71,988	146,956
Average Age	56	49	50
Average Age (Male)	55	48	49
Average Age (Female)	58	50	51
HOUSEHOLDS & INCOME	1 MILE	3 MILES	5 MILES
Total Households	7,302	32,868	67,553
# of Persons per HH	1.8	2.2	2.2
Average HH Income	\$116,649	\$99,969	\$103,787
Average House Value	\$931,800	\$568,395	\$526,187

Demographics data derived from AlphaMap



MICHELE FULLER
941.228.4189
michele@ian-black.com



HEIDI HABER
941.323.0557
heidi@ian-black.com

IAN BLACK
REAL ESTATE
THE PLACE FOR SPACE

Information deemed reliable but not guaranteed. Prices subject to change without notice.

Ian Black Real Estate | 1 South School Avenue | Suite 600 | Sarasota, FL 34237 | 941.906.8688 | ian-black.com