



FOR LEASE
2680 OPITZ BLVD

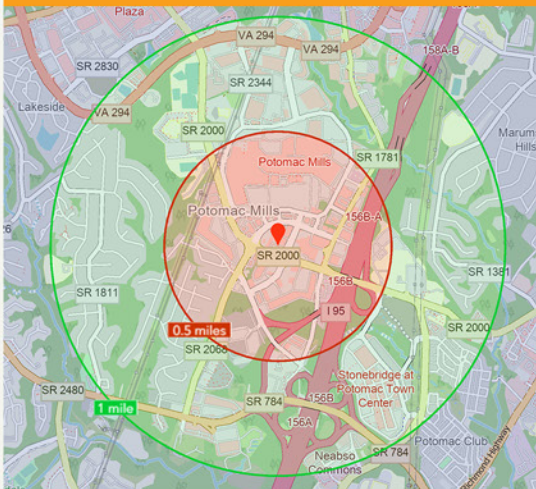
WOODBRIDGE, VA, 22192

DIVISIBLE 2500-5193 SQFT

\$ TBD

LEASE NOTES

Lease rate does not include utilities, property expenses, or building services



This prime commercial space offers a strategic location with direct access from the elevator, ensuring convenience and accessibility for your business. The space boasts high exposed ceilings, creating a spacious and dynamic atmosphere.

The layout features a predominantly open floor plan, promoting versatility in designing your ideal workspace. In addition to the open area, there are 10 private offices, providing a balance between collaborative and individual work environments. Two dedicated conference rooms are also available, equipped to facilitate productive meetings and discussions.



PATTY I BROWN, CCIM PIBROWN@MARATHONRGI.COM
PRESIDENT / PRINCIPAL (703) 402 2433
LICENSED IN VA | MD | D.C.



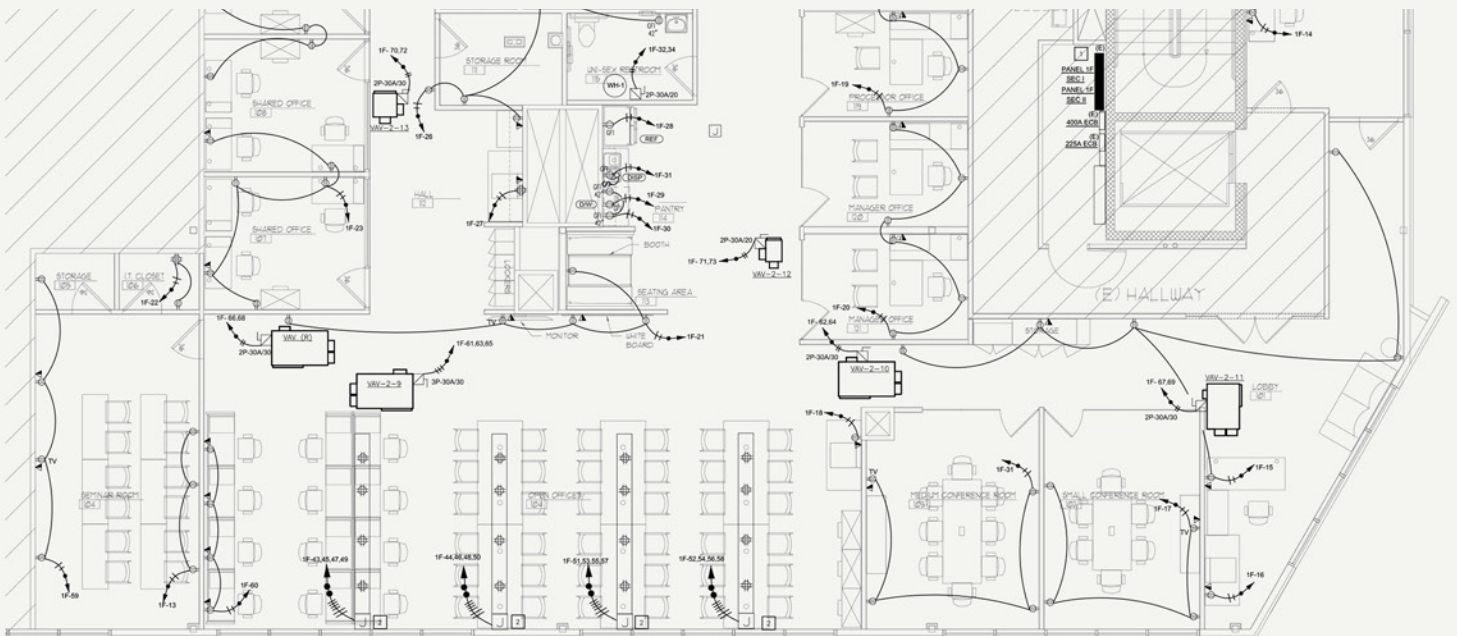
PRIMARY FEATURES

*High visibility exterior signage
secured parking garage
direct elevator exposure
open floor plan w/kitchen*



\$10 PSF NNN

Net of electric only



PATTY I BROWN, CCIM
PRESIDENT / PRINCIPAL

PIBROWN@MARATHONRGI.COM
(703) 402 2433
LICENSED IN VA | MD | D.C.